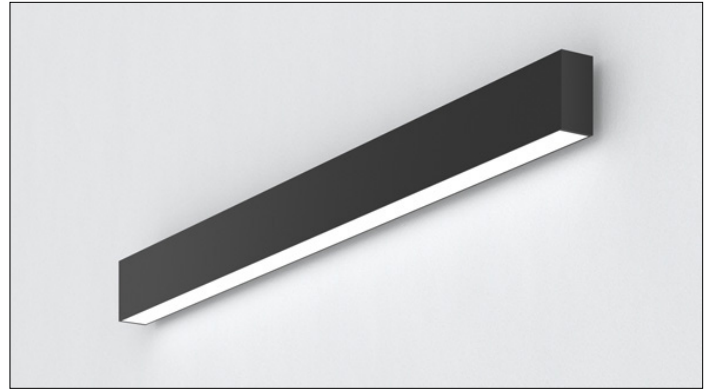




## 3G-2WLI-DI

2" LINEAR  
DIRECT/INDIRECT  
WALL MOUNTED



Narrow 2" aperture with one piece extruded aluminum housing  
Individual or continuous runs available in multiple run configurations  
Direct/Indirect distribution with multiple lumen output options  
LED system with performance up to 143 lumens per watt  
Extruded acrylic lens available in flush, 1" and 2" drop lens options  
Asymmetric optic available  
1% dimming standard with several driver options



<b>PROJECT:</b>		<b>TYPE:</b>	
<b>CATALOG#:</b>		<b>DATE:</b>	<b>QTY:</b>

CAT. NO	LUMEN OUTPUT (DIRECT)	LUMEN OUTPUT (INDIRECT)	CRI
<b>3G-2WLI-DI</b>	<b>D250</b> - 250 LM/FT <b>D500</b> - 500 LM/FT <b>D750</b> - 750 LM/FT <b>D1000</b> - 1000 LM/FT <b>DC__</b> - CUSTOM OUTPUT (SPECIFY LM/FT) *  <small>*Specify custom lumen outputs in 50lm increments (ie: DC600, DC650, DC700) Custom output cannot exceed D1000 DLC minimum lumen output is 500 lm/ft</small>	<b>L250</b> - 250 LM/FT <b>L500</b> - 500 LM/FT <b>L750</b> - 750 LM/FT <sup>1</sup> <b>L1000</b> - 1000 LM/FT <sup>2</sup> <b>LC__</b> - CUSTOM OUTPUT (SPECIFY LM/FT) *  <small>*Specify custom lumen outputs in 50lm increments (ie: LC600, LC650, LC700) Custom output cannot exceed L1000</small>	<b>S80</b> - 80+ CRI <sup>3</sup> <b>H90</b> - 90+ CRI  <small>*DLC listing available with 80CRI</small>

COLOR TEMP	VOLTAGE	DRIVER	LENS OPTION (DIRECT)	LENS OPTION (INDIRECT)
<b>27K</b> - 2700K <b>30K</b> - 3000K <b>35K</b> - 3500K <b>40K</b> - 4000K  <small>*DLC listing available with 35K</small>	<b>UNV</b> - 120/277V <b>347</b> - 347V <sup>4</sup>	<b>DIM</b> - 0-10V (100-1%) <b>D01</b> - 0-10V (100-0.1%) <b>DALI</b> - DALI (100-1%) <sup>5</sup> <b>DHL2</b> - LUTRON HI-LUME (1% ECOSYSTEM) <b>DMX</b> - DMX (100-0%)	<b>FL</b> - FLUSH LENS <b>DD1</b> - 1" DROP LENS <sup>6</sup> <b>DD2</b> - 2" DROP LENS <sup>6</sup> <b>DASY</b> - ASYMMETRIC LENS	<b>FL</b> - FLUSH LENS <b>ASY</b> - ASYMMETRIC LENS

FINISH	CIRCUITING	OPTIONS	RUN TYPE
<b>WH</b> - WHITE <b>BK</b> - BLACK <b>SV</b> - SILVER  <small>All mounting canopies provided in white as standard</small>	<b>1C</b> - SINGLE CIRCUIT <b>2C</b> - DUAL CIRCUIT (SEPARATE DIRECT & INDIRECT)	<b>EMB</b> - EMERGENCY BATTERY * (INTEGRAL) <b>EMC</b> - EMERGENCY CIRCUIT  <small>*Minimum 4' section</small>	<b>S</b> - ___' (STRAIGHT) * <b>L</b> - ___'X ___' (L-SHAPE) <b>U</b> - ___'X ___'X ___' (U-SHAPE)  <small>*Individual units available from 3' to 8' Continuous runs available in 1" increments as standard</small>

- <sup>1</sup> L750 (750LM/FT) and 90CRI not available with ASY (indirect asymmetric option)
- <sup>2</sup> L1000 (1000LM/FT) not available with ASY (indirect asymmetric option)
- <sup>3</sup> S80 (80+ CRI) not available with 27K and 40K
- <sup>4</sup> 347 available in "DIM" 0-10V only (100-1%)
- <sup>5</sup> DALI-2 (Type 6) provided as standard. Please consult factory for DALI (Type 8) options
- <sup>6</sup> DD1 (1" drop lens) and DD2 (2" drop lens) available with straight run type only

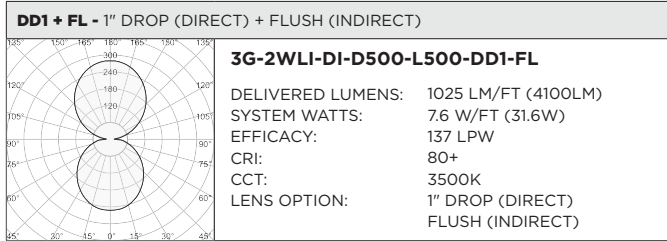
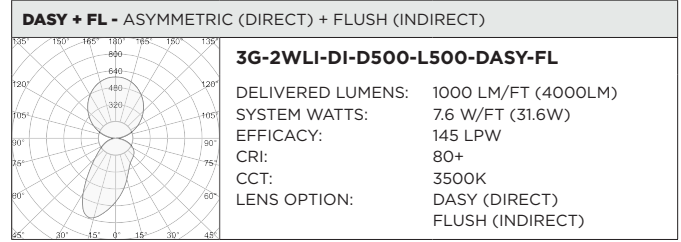
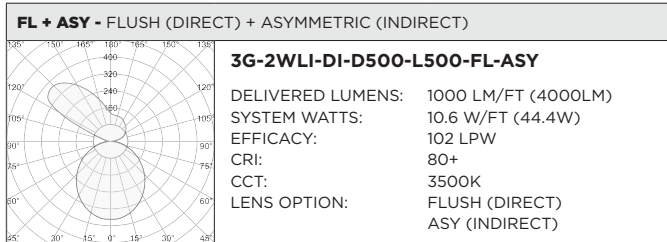
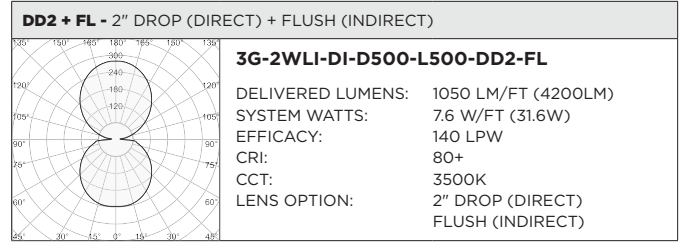
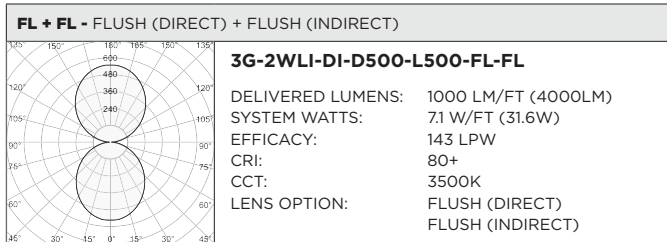


DLC listing starting at 500 lumens per foot (D500)  
Available with 80CRI and 3500K

BASED ON 4' LENGTH (80+ CRI AND 3500K SOURCE)

LUMEN OUTPUT	DELIVERED LUMENS (LM/FT)			SYSTEM WATTS (W/FT)			EFFICACY (LPW)			
	DIRECT + INDIRECT	DIRECT	INDIRECT	TOTAL	DIRECT	INDIRECT	TOTAL	DIRECT	INDIRECT	TOTAL
<b>FLUSH + FLUSH</b>		250	250	500	2.0	1.8	3.8	124	143	132
		500	500	1000	4.0	3.3	7.3	126	154	137
		750	750	1500	6.1	5.0	11.1	123	150	135
		1000	1000	2000	8.3	7.0	15.3	121	144	131
<b>FLUSH + ASYMMETRIC</b>		250	250	500	2.0	1.8	3.8	124	143	132
		500	500	1000	4.0	3.3	7.3	126	154	137
		750	750	1500	6.1	5.0	11.1	123	150	135
		1000	1000	2000	8.3	7.0	15.3	121	144	131
<b>1" DROP + FLUSH</b>		250	250	500	2.0	1.8	3.8	124	143	132
		500	500	1000	4.0	3.3	7.3	126	154	137
		750	750	1500	6.1	5.0	11.1	123	150	135
		1000	1000	2000	8.3	7.0	15.3	121	144	131
<b>2" DROP + FLUSH</b>		275	250	525	2.0	1.8	3.8	138	143	138
		525	500	1025	4.0	3.3	7.3	131	154	140
		775	750	1525	6.1	5.0	11.1	127	150	137
		1025	1000	2025	8.3	7.0	15.3	123	144	132
<b>ASYMMETRIC + FLUSH</b>		265	250	515	2.0	1.8	3.8	133	143	136
		545	500	1045	4.0	3.3	7.3	136	154	143
		805	750	1555	6.1	5.0	11.1	132	150	140
		1080	1000	2080	8.3	7.0	15.3	130	144	136

LUMEN OUTPUT MULTIPLIER: 27K=0.94, 30K=0.97, 35K=1.00, 40K=1.01, 90CRI=0.88



**HOUSING**

Extruded aluminum housing with narrow 2" aperture  
Die cast aluminum end caps add 1/4" to each end of luminaire  
Individual units and continuous runs available in 1" increments as standard  
24-gauge LED reflector with high reflectance white powder coated finish  
Standard polyester powder coated matte white finish. Optional finishes available

**OPTICS**

Extruded, satin acrylic lens designed for optimal performance and glare control. Up to 8' continuous  
Lens options include flush, 1" and 2" drops with illuminated end caps for all drop lenses  
High performance asymmetric optics available

**LISTING**

ETL listed and conforms to UL1598 standard. Certified to CSA22.2 NO.250.0. Rated for indoor dry or damp locations  
DLC certified. Consult factory for details

**WARRANTY**

5 Year Warranty on LED and drivers  
Manufacturer 1 Year Warranty for defects in material and workmanship under normal use  
Ambient temperature at fixture should not exceed 25°C

**ELECTRICAL**

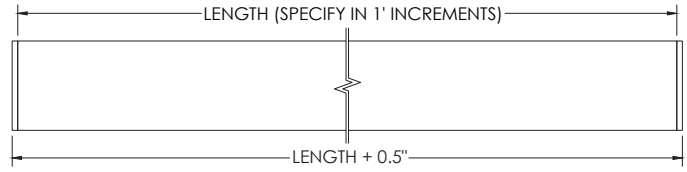
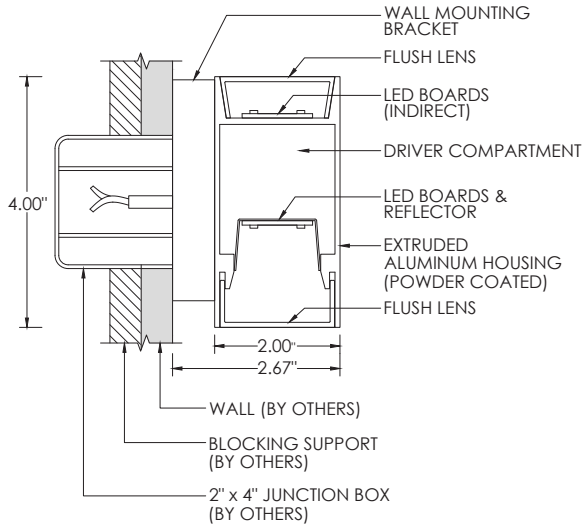
Standard 0-10V, constant current drivers with 100-1% dimming range and >0.9 power factor  
Standard 120/277V universal voltage with several driver options  
Luminaires are pre-wired with factory installed quick connects and branch circuit wiring  
All drivers are integral and easily accessible through luminaire aperture  
Minimum 4' and maximum 6' length for each integral emergency battery. 10W output for 90 minutes

**LED SYSTEM**

Proprietary LED system with color consistency <3 SDCM  
Available in 27K, 30K, 35K, and 40K  
Standard 80+CRI. Optional 90+CRI  
R9 value of 56 for 90+CRI  
L90 >60,000 hours  
5 Year Warranty

**MOUNTING**

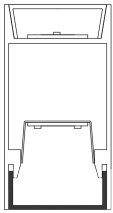
Toolless installation with 3G's proprietary mounting system  
Internal, toolless joiner system (latch and hook) easily connects multiple sections together  
LED reflectors remain within each fixture section during installation with 3G's click and lock spring system  
Suitable for wall mount applications (2"x4" junction box)  
Fixture is secured to mounting brackets that fasten directly to wall  
Suitable for various architectural ceilings (see mounting details)  
Fixture weight: +/- 2.5 lb/ft



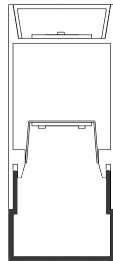
**LENS OPTION**

**DIRECT LENS OPTION**

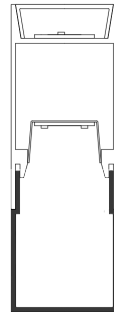
**FL - FLUSH**



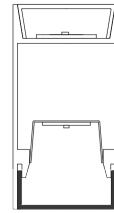
**DASY - ASYMMETRIC**



**FL - FLUSH**

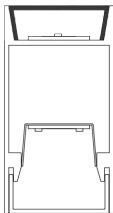


**DASY - ASYMMETRIC**

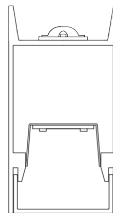


**INDIRECT LENS OPTION**

**FL - FLUSH**




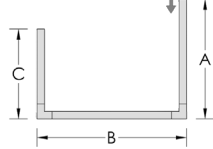
**ASY - ASYMMETRIC**



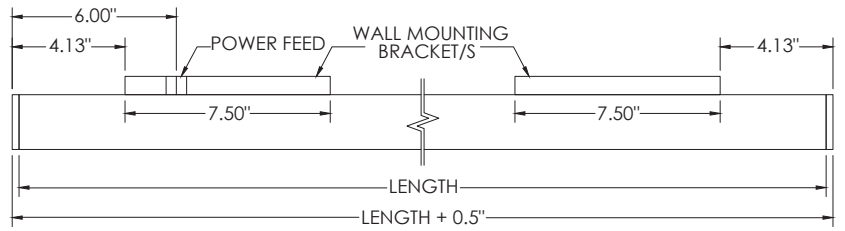
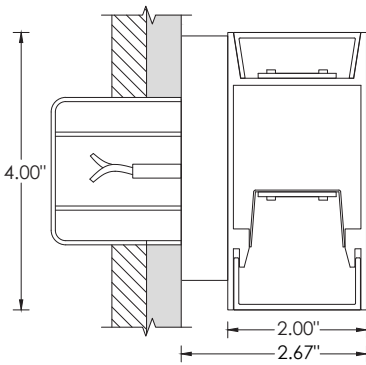
**PATTERNS**

Specify pattern shape and overall dimensions as shown below  
 Patterns are connected with fully illuminated 12"x12" L-shaped sections  
 Please consult factory for custom patterns and shapes not shown below



L-SHAPE	U-SHAPE
Provide dimensions of AxB Example: <b>L</b> - 6'x8'	Provide dimensions of AxBxC Example: <b>U</b> - 8'x10'x6"
	

**MOUNTING DETAILS**



POWER FEED	NON POWER FEED
2" x 4" SLOTTED JUNCTION BOX (BY OTHERS)	MOUNTING SCREWS (BY OTHERS)
