

3G LIGHTING

3G-48RMSL

4.8" RECESSED MICRO MADISON SLOT



4.8" recessed slot designed for continuous runs in various configurations
 Suitable for drywall, wood, grid ceiling, and other architectural ceiling applications
 Machined aluminum double gimbals. Adjustable and lockable
 Individual fixture heads can slide within the channel
 Easily adjustable in the field for maximum flexibility
 Lumen range up to 2200lm (80+, 90+, and 97+ CRI options)
 1% dimming standard with several integral driver options

PROJECT:		TYPE:	
CATALOG#:		DATE:	QTY:

CAT. NO	LUMEN OUTPUT	CRI	COLOR TEMP	BEAM ANGLE	VOLTAGE
3G-48RMSL	10 - 1000 LUMENS	S80 - 80+ CRI ¹	27K - 2700K	20D - 20°	UNV - 120/277V
	15 - 1500 LUMENS	H90 - 90+ CRI	30K - 3000K	40D - 40°	120 - 120V
	22 - 2200 LUMENS	H97 - 97+ CRI ¹	35K - 3500K 40K - 4000K	60D - 60° 90D - 90° *	347 - 347V ²

*90D reflector supplied standard with lens

DRIVER	FLANGE TYPE	GIMBAL FINISH	HOUSING INTERIOR
DIM - 0-10V (100-1%) LE - PHASE DIM ³ (TRIAC/ELV, 100-1%) DO1 - 0-10V (100-0.1%) DALI - DALI (100-1%) ⁴ DHL2 - LUTRON HI-LUME (1% ECOSYSTEM) DMX - DMX (100-0%)	WT - WHITE TRIM FLANGE XTR - TRIMLESS (MUD-IN DRYWALL) FX - FLANGELESS GCX - GRID CEILING (UNIVERSAL MOUNT) *	NG - NATURAL ALUMINUM BG - BLACK GIMBAL WG - WHITE GIMBAL	BK - BLACK WH - WHITE

*Universal mounting brackets used for all grid ceiling types only. See mounting section for details

OPTIONS	RUN TYPE	FIXTURE HEAD SPACING
2C - 2 CIRCUIT OPERATION 3C - 3 CIRCUIT OPERATION HXB - BLACK HEXCELL LOUVER LS - LINEAR SPREAD LENS PM - PRISMATIC LENS SB - SANDBLASTED LENS SF - SOFTENING LENS CP - CHICAGO PLENUM EMR - EMERGENCY BATTERY ⁵ (REMOTE)	S - ____' (STRAIGHT) L - ____' X ____' (L-SHAPE) U - ____' X ____' X ____' (U-SHAPE) R - ____' X ____' (RECTANGLE/SQUARE)	12" - 12" ON CENTER 18" - 18" ON CENTER 24" - 24" ON CENTER 36" - 36" ON CENTER 48" - 48" ON CENTER CUS(XX) - CUSTOM SPACING *

U-Shape and R-Rectangle/Square not available with grid ceiling applications. Continuous runs available in 6" increments

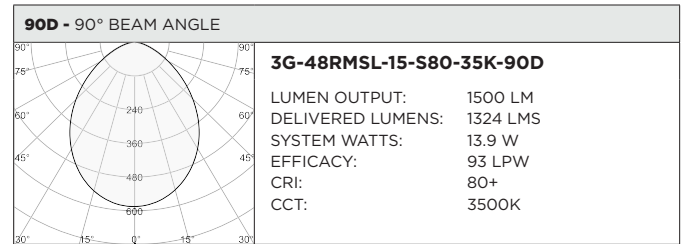
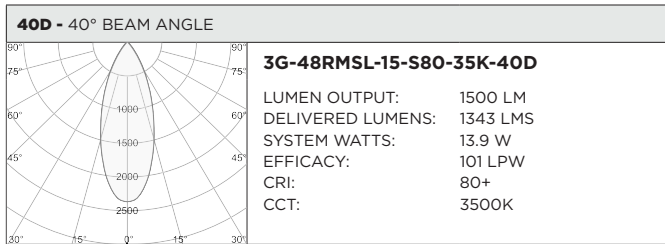
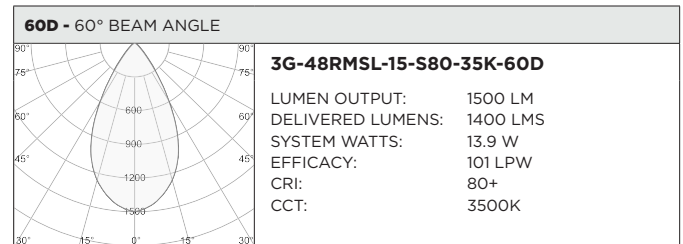
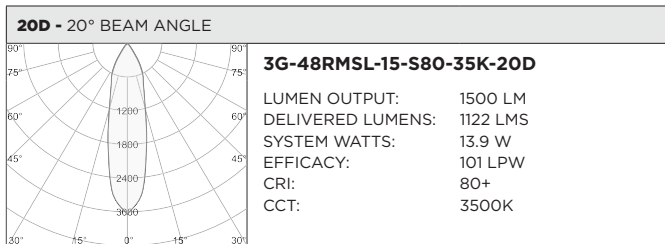
*Specify number of fixture heads (XX)

¹ S80 not available in 27K. H97 available in 30K and 35K as standard
² 347 available in "DIM" 0-10V only (100-1%)
³ Forward Phase/Reverse Phase driver available in 120V only
⁴ DALI-2 (Type 6) provided as standard. Please consult factory for DALI (Type 8) options
⁵ Emergency battery installed remotely by others. Not accessible through the inside of the fixture

BASED ON 60° BEAM ANGLE AND 3500K SOURCE (PER FIXTURE HEAD)

LUMEN OUTPUT	80+ CRI			90+ CRI			97+ CRI		
	DELIVERED LUMENS	SYSTEM WATTS	EFFICACY (LPW)	DELIVERED LUMENS	SYSTEM WATTS	EFFICACY (LPW)	DELIVERED LUMENS	SYSTEM WATTS	EFFICACY (LPW)
1000LMs	1015	10.2	100	893	10.2	88	833	10.0	82
1500LMs	1400	13.9	101	1232	13.9	89	1148	13.9	83
2200LMs	2194	22.0	100	1931	22.0	88	1799	22.0	82

LUMEN OUTPUT MULTIPLIER: 27K=0.94, 30K=0.97, 35K=1.00, 40K=1.01



HOUSING

Housing constructed in extruded aluminum and cold rolled steel
 Extruded aluminum housing with narrow 2" aperture
 Designed for continuous runs in various configurations. Available in 1" increments as standard
 Standard matte black powder coated housing interior with optional matte white finish
 Aluminum trim flange with matte white powder coated finish and minimal 0.400" overlap
 Trimless model features a satin coat mudding flange for seamless ceiling integration

ADJUSTABILITY

Solid aluminum, 50mm machined double gimbals with dual axis adjustability (45°x35°)
 Individual fixture heads can slide left or right within the channel. Easily adjustable in field
 Each double gimbal can be locked into place

OPTICS

Regressed LED source for enhanced glare control
 Proprietary, high performance reflectors. Field replaceable
 Available in 20°, 40°, 60° and 90°

WARRANTY

5 Year Warranty on LED and drivers
 Manufacturer 1 Year Warranty for defects in material and workmanship under normal use
 Ambient temperature at fixture should not exceed 25°C

ELECTRICAL

Standard 0-10V, constant current drivers with 100-1% dimming range and >0.9 power factor
 Standard 120/277V universal voltage with several driver options
 All drivers are integral and easily accessible through luminaire aperture
 Each section is powered individually and can be daisy chained together
 Fixture sections can be fed separately based on circuit requirement
 Remote emergency battery operates for 90 minutes at 10W (not accessible within channel)

LED SYSTEM

Citizen LED module (field replaceable)
 Color consistency <2 SDCM
 Standard (80+ CRI). Optional (90+ and 97+ CRI)
 Available in 27K, 30K, 35K, and 40K
 L90 >50,000 hours
 5 Year Warranty

MOUNTING

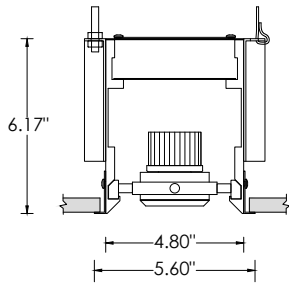
Housing suspended via 1/4" threaded rod or suspension cables (by others)
 Trim fixture designed for use in drywall, wood, and other architectural ceiling materials
 Trimless fixture designed for use in drywall, mud-in ceiling applications
 Flangeless fixture designed for use in wood ceilings
 Suitable for various grid ceiling applications (see mounting details)
 Maximum ceiling thickness of 3.50". Consult factory for modifications

LISTING

ETL listed and conforms to UL1598 standard. Certified to CSA22.2 No.250.0.
 Rated for indoor dry or damp locations

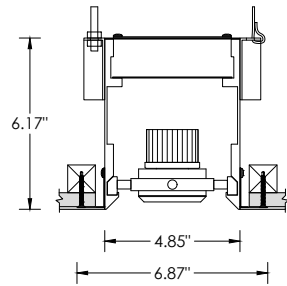
HARD CEILING

WT - TRIM



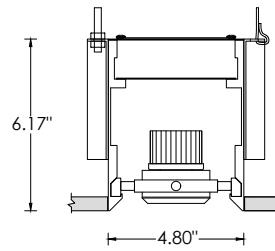
RECOMMENDED CEILING OPENING 5.20"

XTR - TRIMLESS

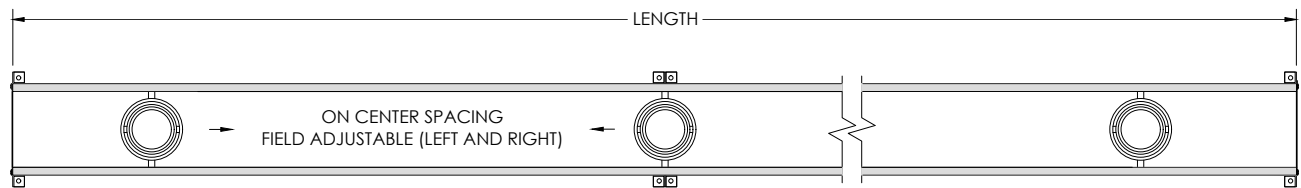


RECOMMENDED CEILING OPENING 5.25"

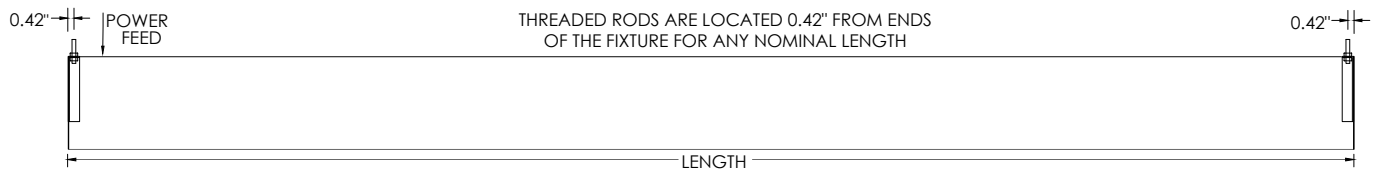
FX - FLANGELESS



RECOMMENDED CEILING OPENING 4.87"



HARD CEILING : MOUNTING DETAILS



GRID CEILING

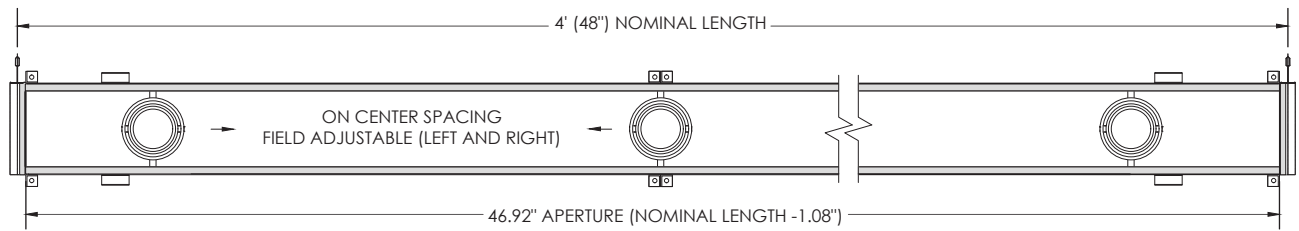
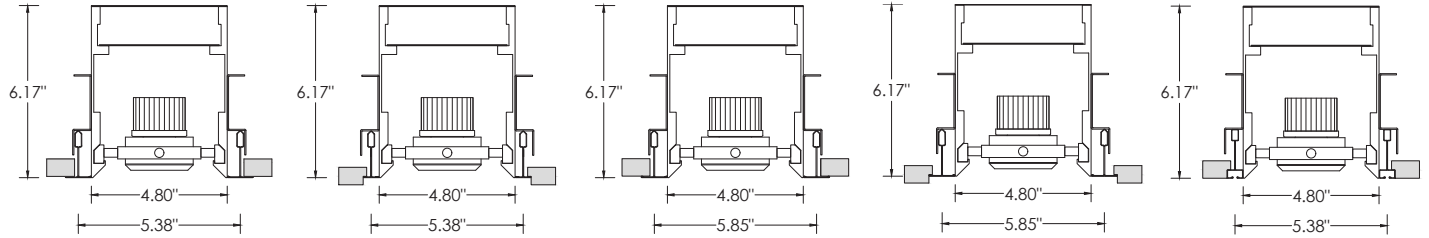
9L - 9/16" LAYIN

9TG - 9/16" TEGULAR

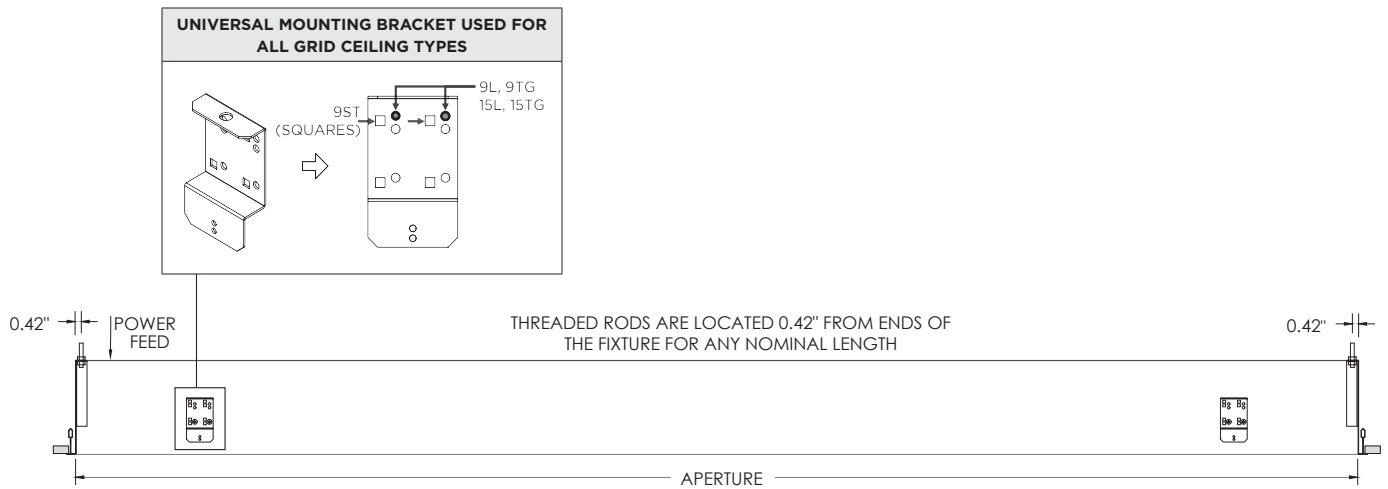
15L - 15/16" LAYIN

15TG - 15/16" TEGULAR

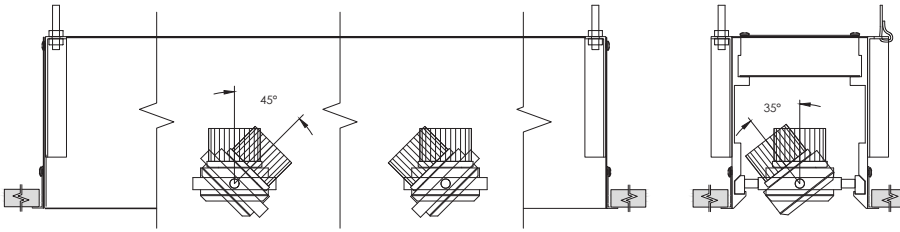
9ST - 9/16" SLOT TEE TEGULAR



GRID CEILING : MOUNTING DETAILS

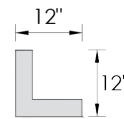


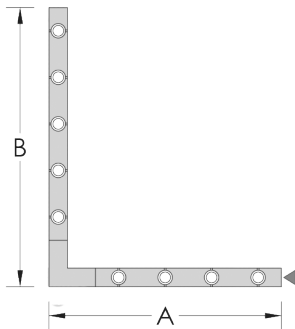
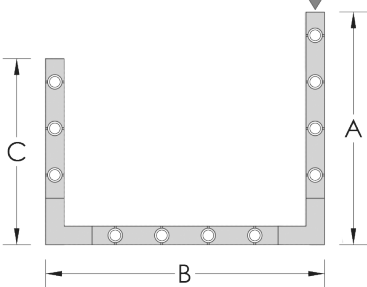
GIMBAL ADJUSTABILITY



PATTERNS

Specify pattern shape and overall dimensions as shown below
 Patterns are connected with 12"x12" mitered corner sections (Fixture heads not available)
 Please consult factory for custom patterns and shapes not shown below



L-SHAPE	U-SHAPE	RECTANGLE/SQUARE
<p>Provide dimensions of AxB Example: L - 6'x8'</p> 	<p>Provide dimensions of AxBxC Example: U - 8'x10'x6"</p> 	<p>Provide dimensions of AxB Example: R - 10'x8'</p> 