

3G LIGHTING

3G-1PLI-I

1.5" LINEAR PENDANT
INDIRECT ONLY



Narrow 1.5" aperture with one piece extruded aluminum housing
Individual or continuous runs available in multiple run configurations
Indirect distribution with multiple lumen output options
LED system with performance up to 148 lumens per watt
Extruded acrylic lens with optimal performance and glare control
Widespread and Asymmetric optics available
1% dimming standard with several driver options

PROJECT:		TYPE:	
CATALOG#:		DATE:	QTY:

CAT. NO	LUMEN OUTPUT	CRI	COLOR TEMP	VOLTAGE
3G-1PLI-I	L250 - 250 LM/FT ¹ L500 - 500 LM/FT L750 - 750 LM/FT L1000 - 1000 LM/FT ² LC___ - CUSTOM OUTPUT (SPECIFY LM/FT) * <small>*Specify custom lumen outputs in 50lm increments (ie: LC600, LC650, LC700) Custom output cannot exceed L1000</small>	S80 - 80+ CRI H90 - 90+ CRI	27K - 2700K 30K - 3000K 35K - 3500K 40K - 4000K	UNV - 120/277V 347 - 347V ³

DRIVER	LENS OPTION	FINISH	CABLE LENGTH
DIM - 0-10V (100-1%) DO1 - 0-10V (100-0.1%) DALI - DALI (100-1%) ⁴ DHL2 - LUTRON HI-LUME (1% ECOSYSTEM) DMX - DMX (100-0%)	FL - FLUSH LENS WSO - WIDESPREAD OPTIC ASY - ASYMMETRIC LENS	WH - WHITE BK - BLACK SV - SILVER <small>All mounting canopies provided in white as standard</small>	60" - 60" 120" - 120"

OPTIONS	RUN TYPE
EMB - EMERGENCY BATTERY * (INTEGRAL) EMC - EMERGENCY CIRCUIT MC2 - MULTIPLE CIRCUITS (2 ZONES) MC3 - MULTIPLE CIRCUITS (3 ZONES) <small>*Minimum 4' section</small>	S - ___' (STRAIGHT) * L - ___'X ___' (L-SHAPE) U - ___'X ___'X ___' (U-SHAPE) R - ___'X ___' (RECTANGLE/SQUARE) <small>*Individual units available in 2', 3', 4', 5', 6', and 8' Continuous runs available in 1" increments as standard</small>

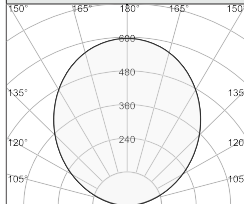
¹ L250 (250LM/FT) not available in 2' and 3' lengths. Specify LC400 for 2' and 3' fixture lengths when outputs lower than 500LM/FT are required
² L1000 (1000LM/FT) not available with H90 (90+ CRI)
³ 347 available in "DIM" 0-10V only (100-1%)
⁴ DALI-2 (Type 6) provided as standard. Please consult factory for DALI (Type 8) options

BASED ON 4' LENGTH (80+ CRI AND 3500K SOURCE)

LENS OPTION	DELIVERED LUMENS (LM/FT)	SYSTEM WATTS (W/FT)	EFFICACY (LPW)
FLUSH	250	1.7	146
	500	3.3	148
	750	5.2	144
	1000	7.2	137
WIDESPREAD	250	2.1	114
	500	4.6	107
	750	6.8	111
	1000	9.3	108
ASYMMETRIC	250	3.4	74
	500	6.5	77
	750	10.3	72
	1000	13.8	72

LUMEN OUTPUT MULTIPLIER: 27K=0.94, 30K=0.97, 35K=1.00, 40K=1.01, 90CRI=0.88

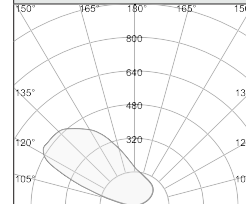
FL - FLUSH LENS



3G-1PLI-I-L500-FL

DELIVERED LUMENS: 500 LM/FT (2000LM)
 SYSTEM WATTS: 3.3 W/FT (13.2W)
 EFFICACY: 148 LPW
 CRI: 80+
 CCT: 3500K
 LENS OPTION: FLUSH

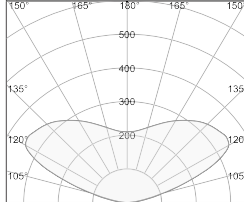
ASY - ASYMMETRIC LENS



3G-1PLI-I-L500-ASY

DELIVERED LUMENS: 500 LM/FT (2000LM)
 SYSTEM WATTS: 6.5 W/FT (26.0W)
 EFFICACY: 77 LPW
 CRI: 80+
 CCT: 3500K
 LENS OPTION: ASYMMETRIC

WSO - WIDESPREAD OPTIC



3G-1PLI-I-L500-WSO

DELIVERED LUMENS: 500 LM/FT (2000LM)
 SYSTEM WATTS: 4.6 W/FT (18.4W)
 EFFICACY: 107 LPW
 CRI: 80+
 CCT: 3500K
 LENS OPTION: WIDESPREAD

HOUSING

Extruded aluminum housing with narrow 1.5" aperture
Machined aluminum end caps add 1/4" to each end of luminaire
Individual units and continuous runs available in 1" increments
24-gauge LED reflector with high reflectance white powder coated finish
Standard polyester powder coated matte white finish. Optional finishes available

OPTICS

Extruded, satin acrylic lens designed for optimal performance and glare control
High performance widespread and asymmetric optics available
Widespread Optic peak intensity at 120° with a minimum mounting distance of 18" from ceiling

LISTING

ETL listed and conforms to UL1598 standard. Certified to CSA22.2 NO.250.0. Rated for indoor dry or damp locations

WARRANTY

5 Year Warranty on LED and drivers
Manufacturer 1 Year Warranty for defects in material and workmanship under normal use
Ambient temperature at fixture should not exceed 25°C

ELECTRICAL

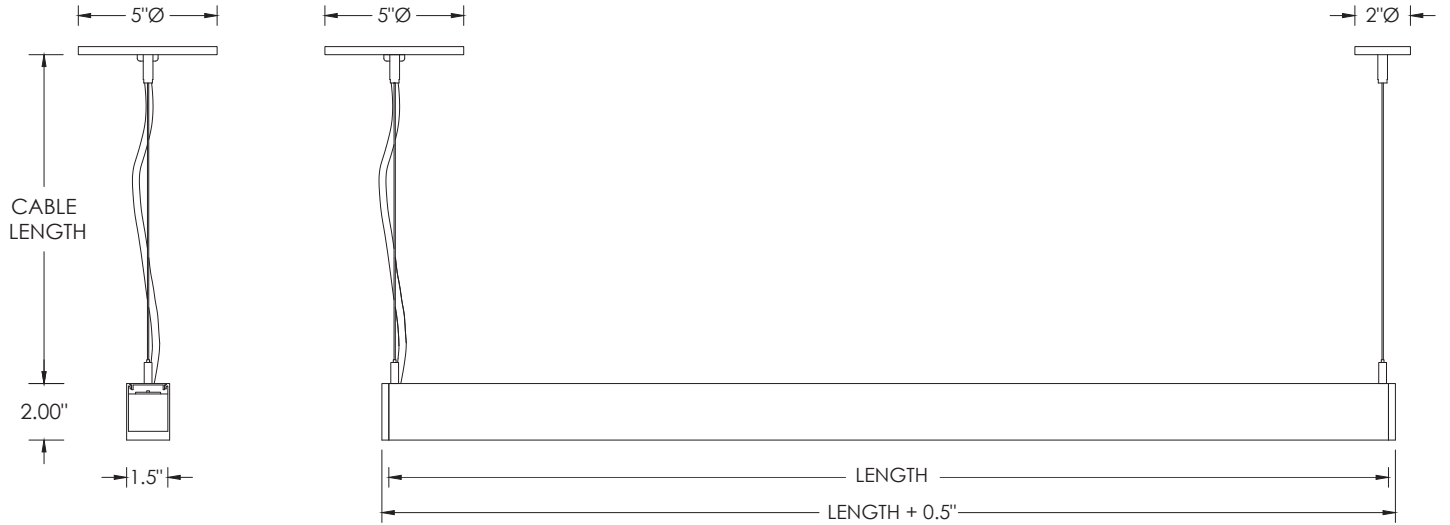
Standard 0-10V, constant current drivers with 100-1% dimming range and >0.9 power factor
Standard 120/277V universal voltage with several driver options
Luminaires are pre-wired with factory installed quick connects and branch circuit wiring
All drivers are integral and easily accessible through luminaire aperture
Minimum 4' and maximum 6' length for each integral emergency battery. 10W output for 90 minutes

LED SYSTEM

Proprietary LED system with color consistency <3 SDCM
Available in 27K, 30K, 35K, and 40K
Standard 80+CRI. Optional 90+CRI
R9 value of 56 for 90+CRI
L90 >60,000 hours
5 Year Warranty

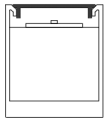
MOUNTING

Toolless installation with 3G's proprietary mounting system
Internal, toolless joiner system (latch and hook) easily connects multiple sections together
LED reflectors remain within each fixture section during installation with 3G's click and lock spring system
Adjustable aircraft cable suspension with locking fasteners (60" length standard)
Standard, 18-gauge, 5 conductor single circuit power feed (clear braided finish)
All mounting canopies provided in white finish as standard
Suitable for various architectural ceilings (see mounting details)
Fixture weight: +/- 2 lb/ft



LENS OPTION

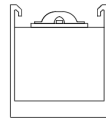
FL - FLUSH



WSO - WIDESPREAD



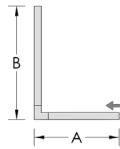
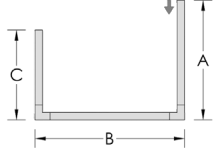
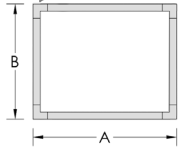
ASY - ASYMMETRIC



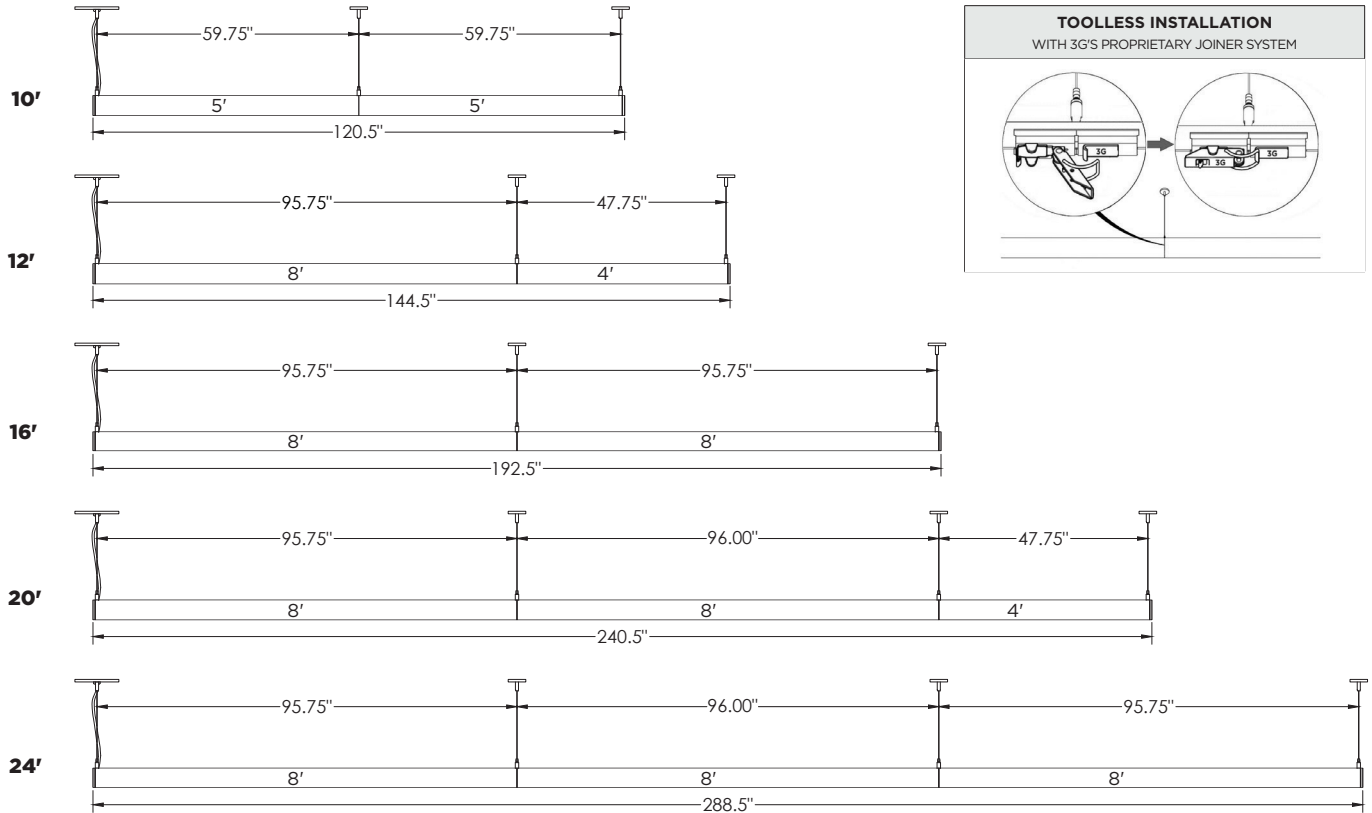
PATTERNS

Specify pattern shape and overall dimensions as shown below
 Patterns are connected with fully illuminated 12"x12" L-shaped sections
 Please consult factory for custom patterns and shapes not shown below



L-SHAPE	U-SHAPE	RECTANGLE/SQUARE
Provide dimensions of AxB Example: L - 6'x8'	Provide dimensions of AxBxC Example: U - 8'x10'x6"	Provide dimensions of AxB Example: R - 10'x8'
		

TYPICAL SECTION MOUNTING



NOTE:
Run lengths and configurations not shown are available in 1" increments as standard

MOUNTING DETAILS

