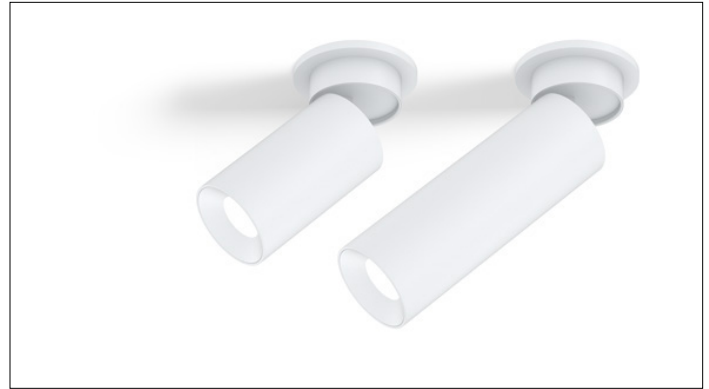


# 3G LIGHTING

## 3G-SDL33RA

3.3" ADJUSTABLE DOWNLIGHT  
CYLINDER 7" AND 11" HEIGHT



3.3" diameter high performance cylinders  
Companion to 3G-DL33R series downlight family  
Extruded aluminum housing with powder coated finish  
Twist and lock construction and no visible hardware  
Regressed LED source for enhanced glare control  
Adjustable housing with 0-90° tilt and 360° rotation  
Lumen range up to 2200lm (80+, 90+, and 97+ CRI options)  
1% dimming standard with several integral driver options

<b>PROJECT:</b>		<b>TYPE:</b>	
<b>CATALOG#:</b>		<b>DATE:</b>	<b>QTY:</b>

CAT. NO	FIXTURE HEIGHT	LUMEN OUTPUT	CRI	COLOR TEMP	BEAM ANGLE
3G-SDL33RA	7H - 7" HEIGHT *	10 - 1000 LUMENS	S80 - 80+ CRI <sup>1</sup>	27K - 2700K	20D - 20°
	11H - 11" HEIGHT	15 - 1500 LUMENS	H90 - 90+ CRI	30K - 3000K	40D - 40°
		22 - 2200 LUMENS	H97 - 97+ CRI <sup>1</sup>	35K - 3500K 40K - 4000K	60D - 60° 90D - 90°
	*7H available up to 1500lm with integral driver (DIM & LE options). Select remote driver option for higher lumen outputs				

VOLTAGE	DRIVER	HOUSING FINISH	INSERT FINISH
UNV - 120/277V 120 - 120V 347 - 347V <sup>2</sup>	DIM - 0-10V (100-1%) LE - PHASE DIM <sup>3</sup> (TRIAC/ELV, 100-1%) D01 - 0-10V (100-0.1%) DALI - DALI (100-1%) <sup>4</sup> DHL2 - LUTRON HI-LUME (1% ECOSYSTEM) DMX - DMX (100-0%) RDIM - REMOTE 0-10V (100-1%) RLE - REMOTE PHASE (TRIAC/ELV, 100-1%)	WH - WHITE BK - BLACK SV - SILVER	WI - WHITE BI - BLACK SI - SILVER
*Not available with 7H model	Remote drivers supplied with enclosure		

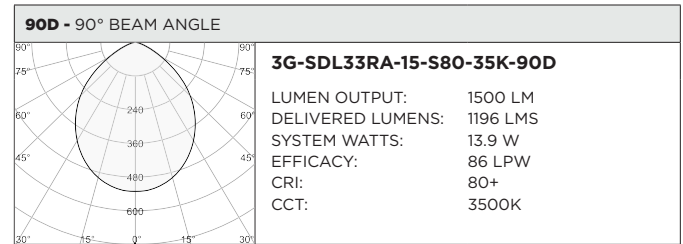
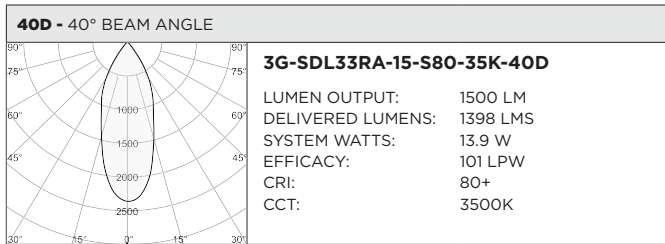
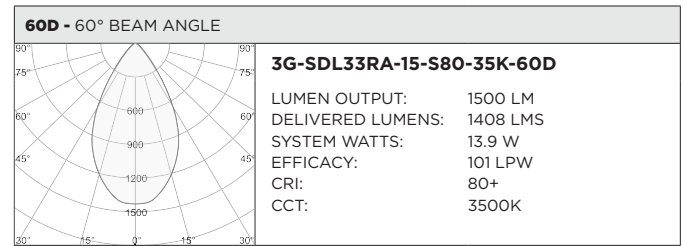
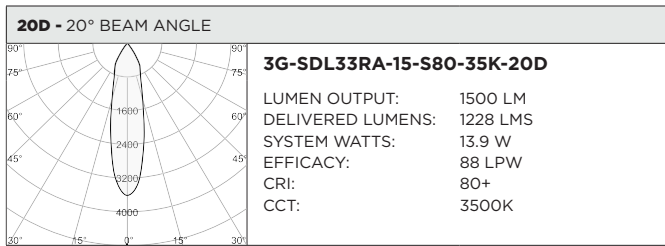
OPTIONS
LS - LINEAR SPREAD LENS
SB - SANDBLASTED LENS
SF - SOFTENING LENS (SUPPLIED STANDARD)
CFW - WHITE CONDUIT FEED CANOPY
CFB - BLACK CONDUIT FEED CANOPY
CFS - SILVER CONDUIT FEED CANOPY
FXC - SEAMLESS CANOPY OPTION
EMR - EMERGENCY BATTERY (REMOTE) <sup>5</sup>
Maximum 1 optical accessory Not available with 90D reflector option

- 1 S80 not available in 27K. H97 available in 30K and 35K as standard
- 2 347 available in "DIM" 0-10V and "RDIM" 0-10V only (100-1%). Not available with 7H model
- 3 Phase dimming options available in 120V only
- 4 DALI-2 (Type 6) provided as standard. Consult factory for DALI Type 8 option
- 5 Emergency battery installed remotely by others. Not accessible through the inside of the fixture

BASED ON 60° BEAM ANGLE AND 3500K SOURCE

LUMEN OUTPUT	80+ CRI			90+ CRI			97+ CRI		
	DELIVERED LUMENS	SYSTEM WATTS	EFFICACY (LPW)	DELIVERED LUMENS	SYSTEM WATTS	EFFICACY (LPW)	DELIVERED LUMENS	SYSTEM WATTS	EFFICACY (LPW)
<b>1000LMs</b>	1080	10.3	105	950	10.3	92	886	10.3	86
<b>1500LMs</b>	1408	13.9	101	1239	13.9	89	1155	13.9	83
<b>2200LMs</b>	2132	21.9	97	1876	21.9	86	1748	21.9	80

LUMEN OUTPUT MULTIPLIER: 27K=0.94, 30K=0.97, 35K=1.00, 40K=1.01



## HOUSING

Extruded aluminum housing with powder coated finish  
Twist and lock construction with no visible hardware  
Adjustable housing with 0-90° tilt and 360° rotation features proprietary swivel mechanism

## BEVELED INSERT

3.3" aperture with regressed LED source for enhanced glare control  
Cast aluminum insert with matte powder coated finish

## OPTICS

Proprietary anodized, aluminum reflectors are field replaceable (20° reflector not interchangeable)  
Available in 20°, 40°, 60° and 90°

## LISTING

ETL listed and conforms to UL1598 standard. Certified to CSA22.2 No.250.0.  
Rated for indoor dry or damp locations

## WARRANTY

5 Year Warranty on LED and drivers  
Manufacturer 1 Year Warranty for defects in material and workmanship under normal use  
Ambient temperature at fixture should not exceed 25°C

## ELECTRICAL

Standard 0-10V, constant current drivers with 100-1% dimming range and >0.9 power factor  
120V Forward Phase/Reverse Phase driver option with 100-1% dimming range  
Standard 120/277V universal voltage with several driver options  
All drivers are integral and easily accessible through luminaire aperture  
7" models include 0-10V drivers that operate only with dimmers that sink current (not designed for source current)  
Compatible 0-10V dimmers for all 7" height models listed below:  
**Lutron** NFTV, **Lutron** DDTV, **Lutron** DVSTV, **Lutron** VIVE RMJS-8TN, **Leviton** IP710-DLZ, **Philips** SR1200ZTUNV, **Cooper** SF10P

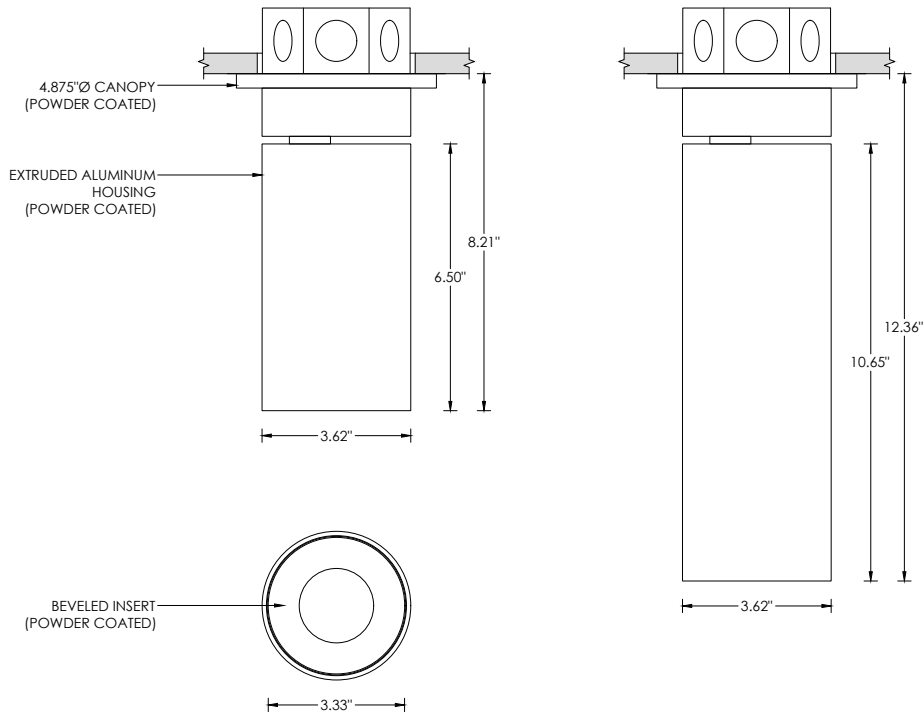
## LED SYSTEM

Citizen LED module (field replaceable)  
Color consistency <2 SDCM  
Standard (80+ CRI). Optional (90+ and 97+ CRI)  
Available in 27K, 30K, 35K, and 40K  
L90 >50,000 hours  
5 Year Warranty

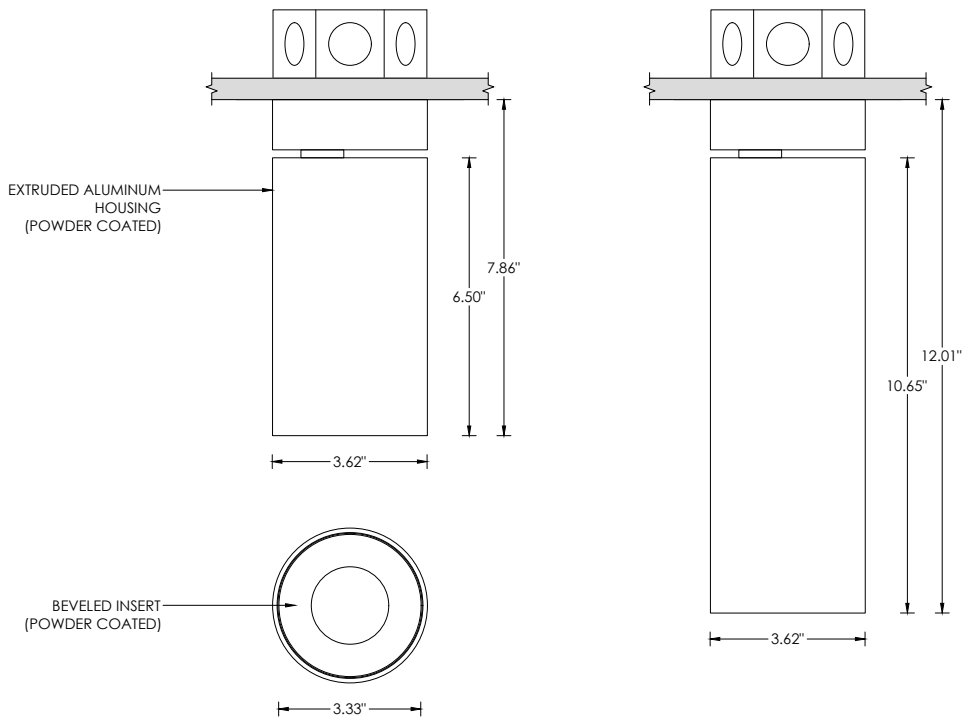
## MOUNTING

All hardware included for mounting to 4" octagonal junction box  
Conduit feed cut-out canopy option designed to mount to 4" octagonal junction box  
Twist and lock mechanism

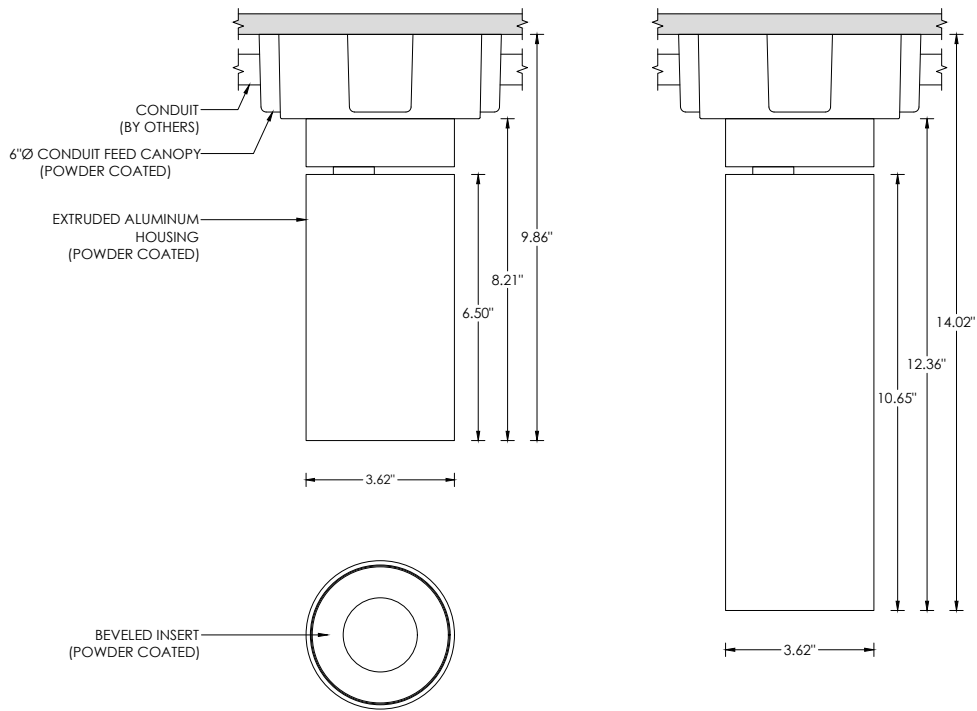
**RECESSED 4" OCTAGONAL JUNCTION BOX BY OTHERS**  
STANDARD CANOPY MOUNT



**RECESSED 4" OCTAGONAL JUNCTION BOX BY OTHERS**  
SEAMLESS CANOPY MOUNT (FXC OPTION) FOR NEW CONSTRUCTION ONLY



**SURFACE 4" OCTAGONAL X 1.5" DEEP JUNCTION BOX BY OTHERS**  
CONDUIT FEED CANOPY MOUNT (CFX OPTION)



**CONDUIT FEED CANOPY MOUNTING OPTIONS**

