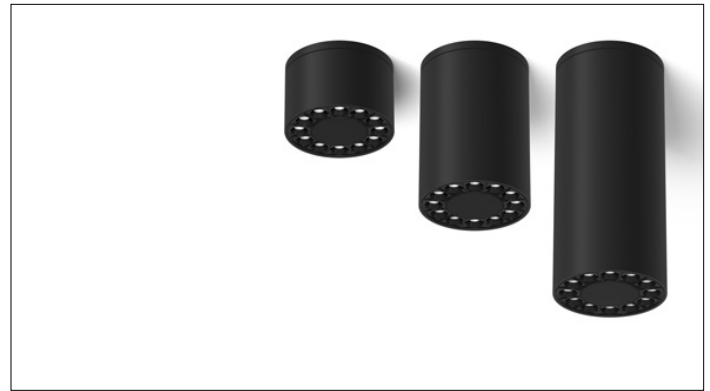


3G LIGHTING

3G-SDZ45R

4.5" ZOIE CYLINDER
3", 7" AND 11" HEIGHT



4.5" diameter Surface Mounted Zoie Cylinder
Companion to 3G-DZ45R Round Zoie Downlight
Regressed LED source provides maximum visual comfort, UGR <10
High gloss black or white louvers with proprietary optics and no glare
Extruded aluminum housing with powder coated finish
Twist and lock construction and no visible hardware
Lumen range from 1000lm to 3000lm (80+ and 90+ CRI options)
100-1% dimming range standard with integral driver options

PROJECT:		TYPE:	
CATALOG#:		DATE:	QTY:

CAT. NO	FIXTURE HEIGHT	LUMEN OUTPUT	CRI	COLOR TEMP
3G-SDZ45R	3H - 3" HEIGHT * 7H - 7" HEIGHT * 11H - 11" HEIGHT <small>*3H & 7H available up to 2500lm with 80+CRI option and 2000lm with 90+CRI option (DIM & LE drivers only)</small>	10 - 1000 LUMENS 15 - 1500 LUMENS 20 - 2000 LUMENS 25 - 2500 LUMENS 30 - 3000 LUMENS ¹ <small>Lumen outputs are delivered lumens based on 80+ CRI, 3000K source. See performance chart for all options</small>	S80 - 80+ CRI H90 - 90+ CRI	27K - 2700K ² 30K - 3000K 35K - 3500K 40K - 4000K ²

BEAM ANGLE	VOLTAGE	DRIVER	HOUSING FINISH	LOUVER FINISH
20D - 20° 40D - 40° 60D - 60°	UNV - 120/277V 120 - 120V 347 - 347V ³	DIM - 0-10V (100-1%) LE - PHASE DIM (TRIAC/ELV, 100-1%) ⁴ D01 - 0-10V (100-0.1%) DALI - DALI (100-1%) ⁵ DHL2 - LUTRON HI-LUME (1% ECOSYSTEM) DMX - DMX (100-0%)	BK - BLACK TRIM WH - WHITE TRIM SV - SILVER TRIM	BLV - BLACK WLV - WHITE

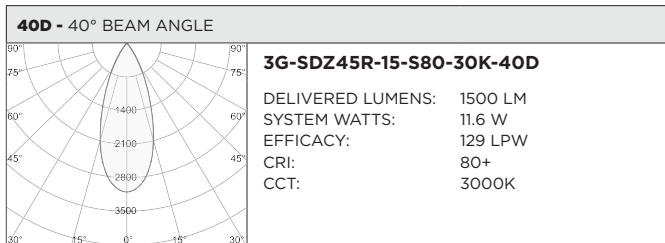
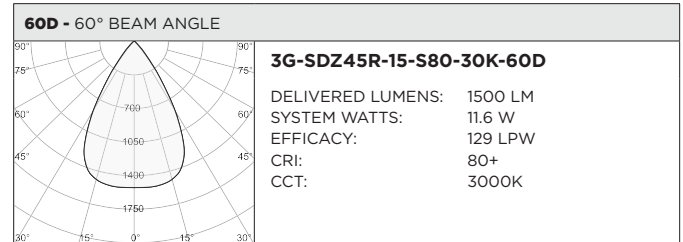
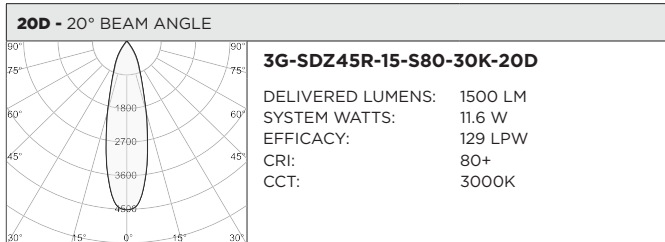
OPTIONS
CFB - BLACK CONDUIT FEED CANOPY CFW - WHITE CONDUIT FEED CANOPY CFS - SILVER CONDUIT FEED CANOPY EMR - EMERGENCY BATTERY (REMOTE) ⁶

1 3000lm not available with 90CRI
 2 2700K only available in 90CRI and 4000K only available in 80CRI
 3 347 available in "DIM" 0-10V only (100-1%). Not available with 3" height and 7" height
 4 Phase dimming options available in 120V only
 5 DALI-2 (Type 6) provided as standard. Consult factory for DALI Type 8 option
 6 Emergency battery installed remotely by others. Not accessible through the inside of the fixture

BASED ON 40° BEAM ANGLE, 80CRI AND 3000K SOURCE

80+ CRI			90+ CRI		
DELIVERED LUMENS	SYSTEM WATTS	EFFICACY (LPW)	DELIVERED LUMENS	SYSTEM WATTS	EFFICACY (LPW)
1000	7.5	133	1000	9.3	107
1500	11.6	129	1500	14.3	105
2200	17.1	129	2200	22.0	100
3000	26.0	115	3000	33.6	89

LUMEN OUTPUT MULTIPLIER FOR 80CRI: 27K=N/A, 30K=1.00, 35K=0.98, 40K=1.06
LUMEN OUTPUT MULTIPLIER FOR 90CRI: 27K=0.80, 30K=0.85, 35K=0.86, 40K=N/A



HOUSING

Extruded aluminum housing with powder coated finish
Twist and lock construction with no visible hardware

OPTICS

4.5" aperture with regressed LED source for maximum visual comfort
High gloss black or white louvers with proprietary optics and no glare
Polycarbonate multi-faceted reflectors
Available in 20°, 40° and 60°
UGR <10

LISTING

ETL listed and conforms to UL1598 standard. Certified to CSA22.2 No.250.0. Rated for indoor locations

WARRANTY

5 Year Warranty on LED and drivers
Manufacturer 1 Year Warranty for defects in material and workmanship under normal use
Ambient temperature at fixture should not exceed 25°C

ELECTRICAL

Standard 0-10V, constant current drivers with 100-1% dimming range and >0.9 power factor
120V Forward Phase/Reverse Phase driver option with 100-1% dimming range
Standard 120/277V universal voltage with several driver options
All drivers are integral and easily accessible through luminaire aperture
3" and 7" models include 0-10V drivers that operate only with dimmers that sink current (not designed for source current)
Compatible 0-10V dimmers for all 3" and 7" height models listed below:
Lutron NFTV, **Lutron** DVTV, **Lutron** DVSTV, **Lutron** VIVE RMJS-8TN, **Leviton** IP710-DLZ, **Philips** SR1200ZTUNV, **Cooper** SF10P

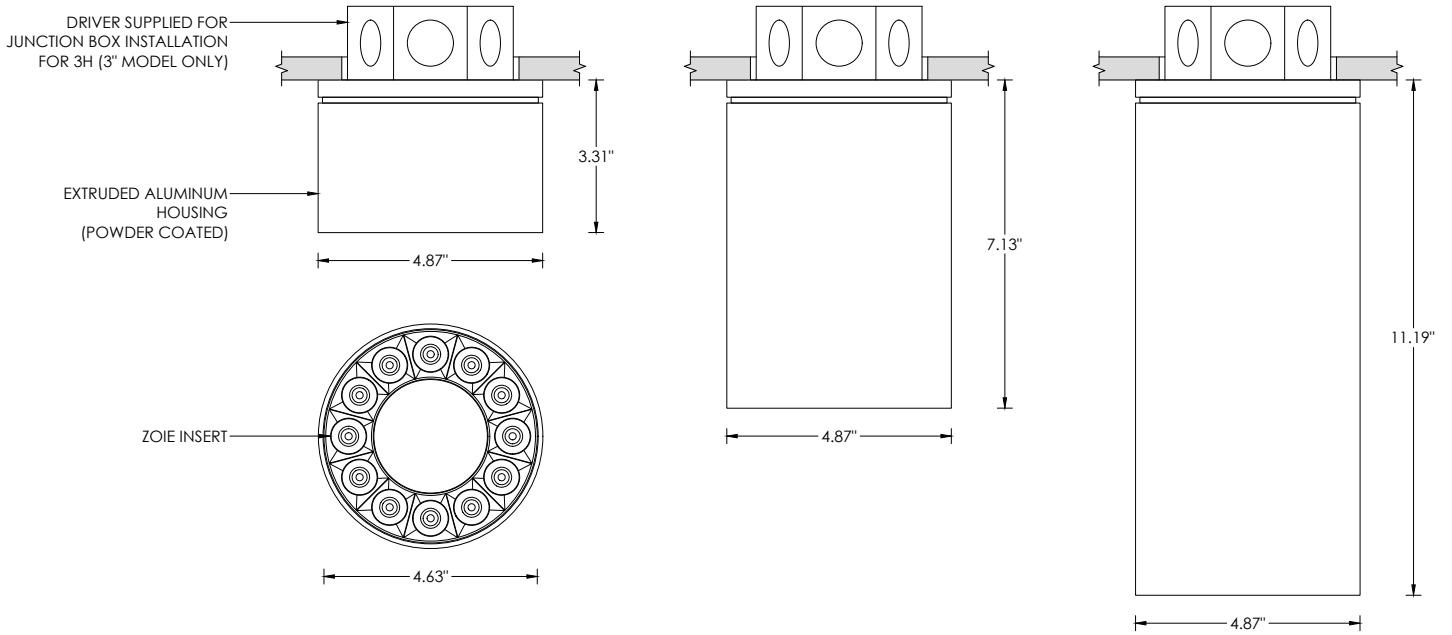
LED SYSTEM

Osram LED source
Color consistency <2 SDCM
80+ and 90+ CRI
Available in 27K, 30K, 35K, and 40K
L90 >60,000 hours
5 year warranty

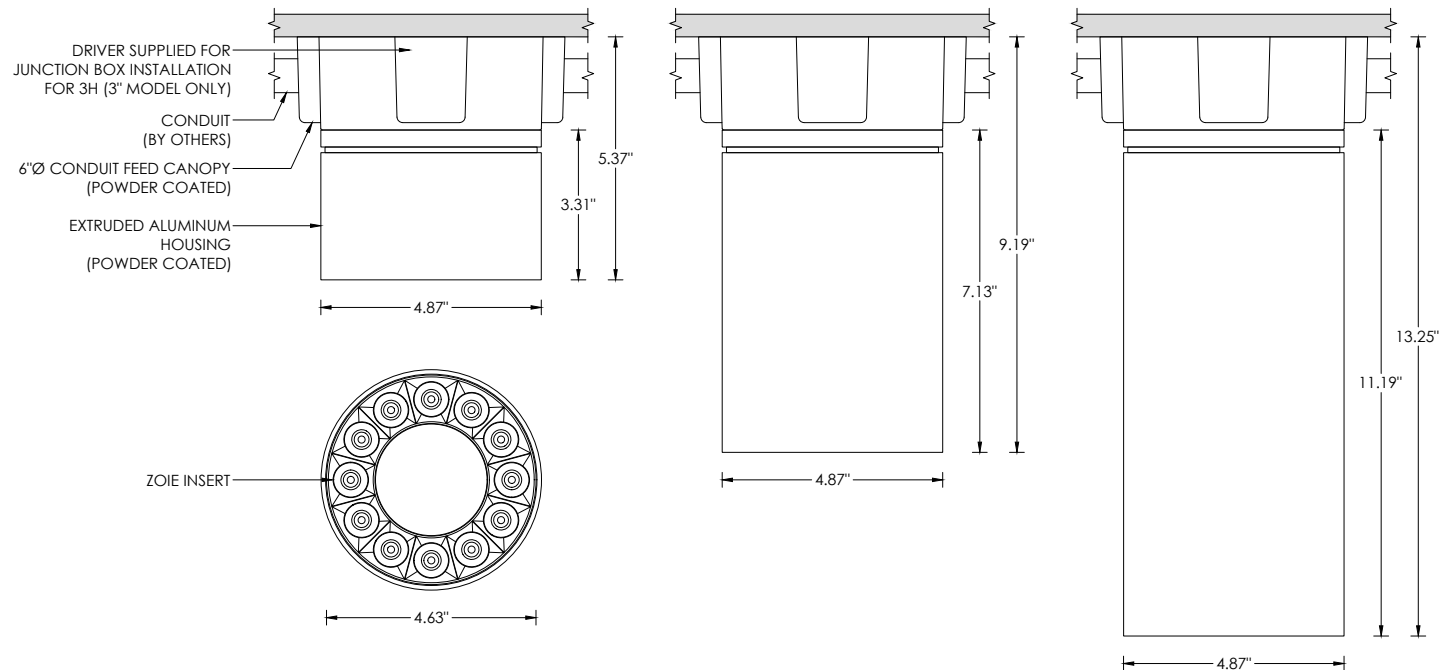
MOUNTING

All hardware included for mounting to 4" octagonal junction box
Twist and lock mechanism
Conduit feed cut-out canopy option designed to mount to 4" octagonal junction box

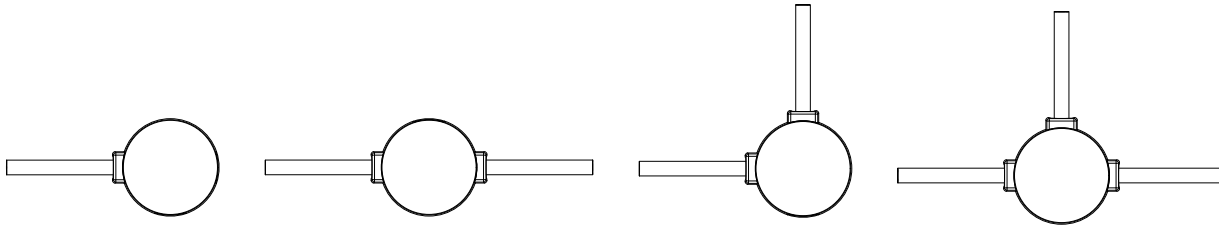
RECESSED 4" OCTAGONAL JUNCTION BOX BY OTHERS
STANDARD CANOPY MOUNT



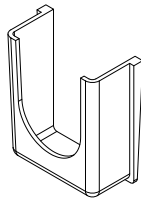
SURFACE 4" OCTAGONAL X 1.5" DEEP JUNCTION BOX BY OTHERS
CONDUIT FEED CANOPY MOUNT (CFX OPTION)



CONDUIT FEED CANOPY MOUNTING OPTIONS



CONDUIT COVER
3 PROVIDED WITH EACH
CONDUIT FEED CANOPY



BLANK
2 PROVIDED WITH EACH
CONDUIT FEED CANOPY

