

# 3G LIGHTING

## 3G-PDZ33RA

3.3" ADJUSTABLE ZOIE CYLINDER  
3", 7" AND 11" HEIGHT

3.3" diameter, adjustable Zoie cylinder with 0-90° tilt and 360° rotation  
Companion to 3G-DZ33R Round Zoie Downlight  
Regressed LED source provides maximum visual comfort, UGR <10  
High gloss black or white louvers with proprietary optics and no glare  
Extruded aluminum housing with powder coated finish  
Twist and lock construction and no visible hardware  
Lumen range from 700lm to 2000lm (80+ and 90+ CRI options)  
100-1% dimming range standard with integral driver options



<b>PROJECT:</b>		<b>TYPE:</b>	
<b>CATALOG#:</b>		<b>DATE:</b>	<b>QTY:</b>

CAT. NO	FIXTURE HEIGHT	LUMEN OUTPUT (DELIVERED LUMENS)	CRI	COLOR TEMP
<b>3G-PDZ33RA</b>	<b>3H - 3" HEIGHT *</b> <b>7H - 7" HEIGHT *</b> <b>11H - 11" HEIGHT</b>	<b>07 - 700 LUMENS</b> <b>10 - 1000 LUMENS</b> <b>15 - 1500 LUMENS</b> <b>20 - 2000 LUMENS <sup>1</sup></b>	<b>S80 - 80+ CRI</b> <b>H90 - 90+ CRI</b>	<b>27K - 2700K <sup>2</sup></b> <b>30K - 3000K</b> <b>35K - 3500K</b> <b>40K - 4000K <sup>2</sup></b>
	<small>*3H model (RDIM) remote driver                      *3H &amp; 7H up to 1500lm (80+CRI)                      *3H &amp; 7H up to 1000lm (90+CRI)                      Both models (DIM driver only)</small>	<small>Lumen outputs are delivered lumens based on 80+ CRI, 3000K source                      See performance chart for all options</small>		

BEAM ANGLE	VOLTAGE	DRIVER	HOUSING FINISH	LOUVER FINISH
<b>20D - 20°</b> <b>40D - 40°</b> <b>60D - 60°</b>	<b>UNV - 120/277V</b> <b>347 - 347V <sup>3</sup></b>	<b>DIM - 0-10V (100-1%)</b> <b>DO1 - 0-10V (100-0.1%)</b> <b>DALI - DALI (100-1%) <sup>4</sup></b> <b>DHL2 - LUTRON HI-LUME (1% ECOSYSTEM)</b> <b>DMX - DMX (100-0%) *</b> <b>RDIM - REMOTE 0-10V (100-1%)</b>	<b>BK - BLACK</b> <b>WH - WHITE</b> <b>SV - SILVER</b>	<b>BLV - BLACK</b> <b>WLW - WHITE</b>
		<small>*DMX driver only available with rigid stem suspension</small>		

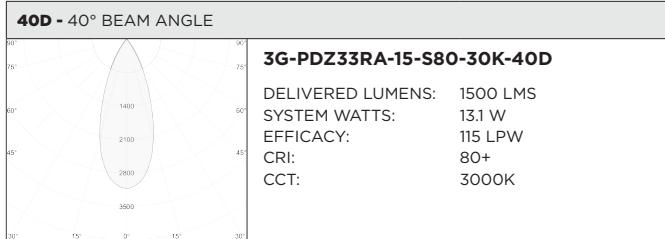
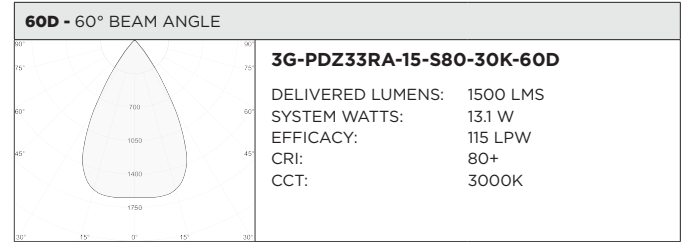
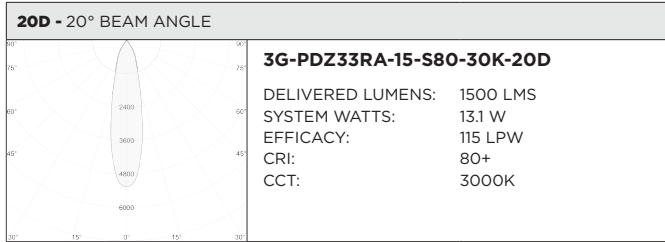
CANOPY	SUSPENSION TYPE	SUSPENSION LENGTH	OPTIONS
<b>WCN - WHITE (STANDARD)</b> <b>BCN - BLACK</b> <b>SCN - SILVER</b> <b>CFW - WHITE CONDUIT FEED CANOPY</b> <b>CFB - BLACK CONDUIT FEED CANOPY</b> <b>CFS - SILVER CONDUIT FEED CANOPY</b>	<b>RSW - WHITE RIGID STEM</b> <b>RSB - BLACK RIGID STEM</b> <b>RSS - SILVER RIGID STEM</b>	<b>S48 - 48" STEM</b> <b>S96 - 96" STEM</b>	<b>EMR - EMERGENCY BATTERY <sup>5</sup> (REMOTE)</b>
		<small>All suspension options are field cuttable</small>	

<sup>1</sup> 2000lm not available with 90CRI  
<sup>2</sup> 2700K only available in 90CRI and 4000K only available in 80CRI  
<sup>3</sup> 347 available in "DIM" 0-10V only (100-1%). Not available with 7" height  
<sup>4</sup> DALI-2 (Type 6) provided as standard. Consult factory for DALI Type 8 option  
<sup>5</sup> Emergency battery installed remotely by others. Not accessible through the inside of the fixture

BASED ON 60° BEAM ANGLE AND 3000K SOURCE

80+ CRI			90+ CRI		
DELIVERED LUMENS	SYSTEM WATTS	EFFICACY (LPW)	DELIVERED LUMENS	SYSTEM WATTS	EFFICACY (LPW)
700	5.7	123	700	7.1	99
1000	8.5	117	1000	10.1	99
1500	13.1	115	1500	15.7	96
2000	18.2	110	2000	21.9	91

LUMEN OUTPUT MULTIPLIER FOR 80CRI: 27K=N/A, 30K=1.00, 35K=0.98, 40K=1.01  
LUMEN OUTPUT MULTIPLIER FOR 90CRI: 27K=0.94, 30K=0.97, 35K=1.00, 40K=1.01



**HOUSING**

Extruded aluminum housing with powder coated finish  
Twist and lock construction with no visible hardware  
Adjustable housing with 0-90° tilt and 360° rotation features proprietary swivel mechanism

**OPTICS**

3.3" aperture with regressed LED source for maximum visual comfort  
High gloss black or white louvers with proprietary optics and no glare  
Polycarbonate multi-faceted reflectors  
Available in 20°, 40° and 60°  
UGR <10

**MOUNTING**

1/2" diameter rigid stem option with sloped ceiling adapter (field cuttable)  
All hardware included for mounting to 4" octagonal junction box  
Conduit feed cut-out canopy option designed to mount to 4" octagonal junction box  
Twist and lock mechanism

**WARRANTY**

5 Year Warranty on LED and drivers  
Manufacturer 1 Year Warranty for defects in material and workmanship under normal use  
Ambient temperature at fixture should not exceed 25°C

**ELECTRICAL**

Standard 0-10V, constant current drivers with 100-1% dimming range and >0.9 power factor  
Standard 120/277V universal voltage with several driver options  
All drivers are integral and easily accessible through luminaire aperture  
Driver supplied for junction box installation for 3" model only  
3" model supplied with remote enclosure c/w 120/277V, 0-10V driver  
7" models include 0-10V drivers that operate only with dimmers that sink current (not designed for source current)  
Compatible 0-10V dimmers for all 3" and 7" height models listed below:  
**Lutron** NFTV, **Lutron** DDTV , **Lutron** DVSTV, **Lutron** VIVE RMJS-8TN, **Leviton** IP710-DLZ, **Philips** SR1200ZTUNV, **Cooper** SF10P

**LED SYSTEM**

Osram LED source  
Color consistency <2 SDCM  
80+ and 90+ CRI  
27K, 30K, 35K, and 40K  
L90 >60,000 hours  
5 year warranty

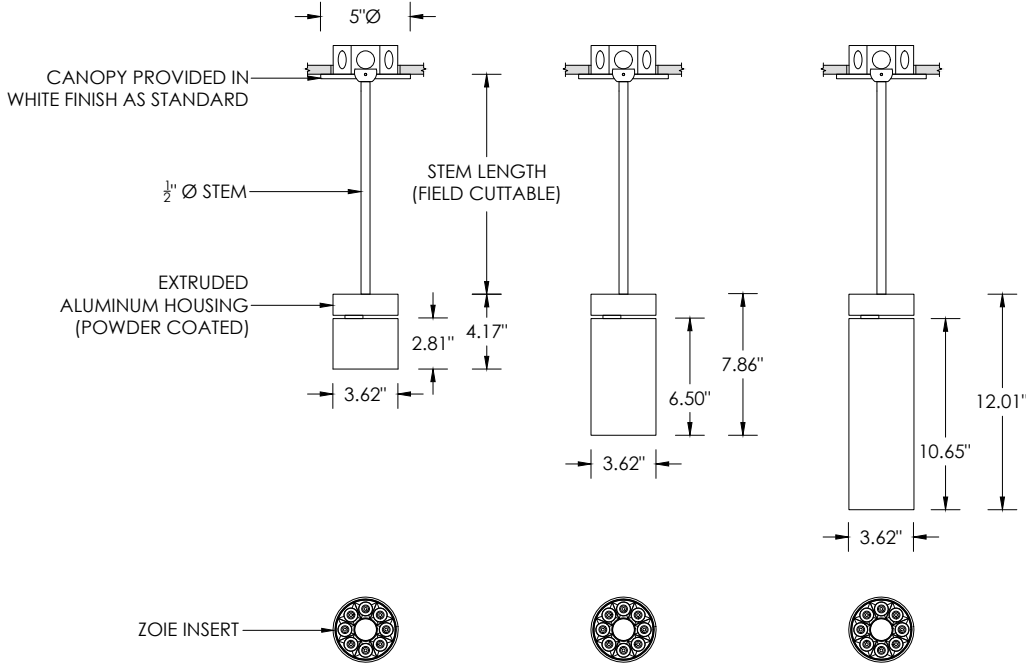
**LISTING**

ETL listed and conforms to UL1598 standard. Certified to CSA22.2 No.250.0.  
Rated for indoor locations

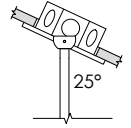
**RECESSED 4" OCTAGONAL JUNCTION BOX BY OTHERS**  
STANDARD CANOPY MOUNT

DRIVER SUPPLIED WITH REMOTE  
ENCLOSURE FOR 3H (3" MODEL ONLY)

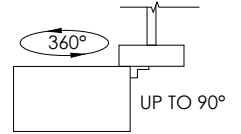
**STEM SUSPENSION**



**SUITABLE FOR SLOPED CEILING**

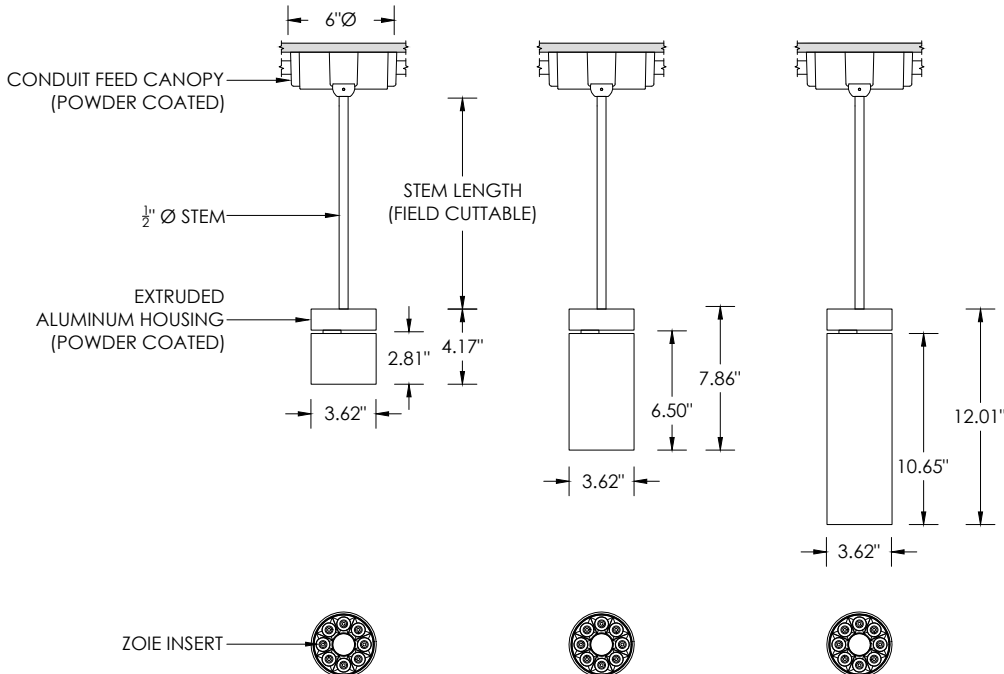


**ADJUSTABILITY**

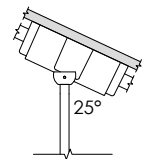


**SURFACE 4" OCTAGONAL X 1.5" DEEP JUNCTION BOX BY OTHERS**  
CONDUIT FEED CANOPY MOUNT (CFX OPTION)

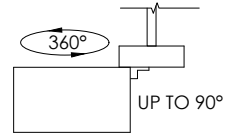
**STEM SUSPENSION**



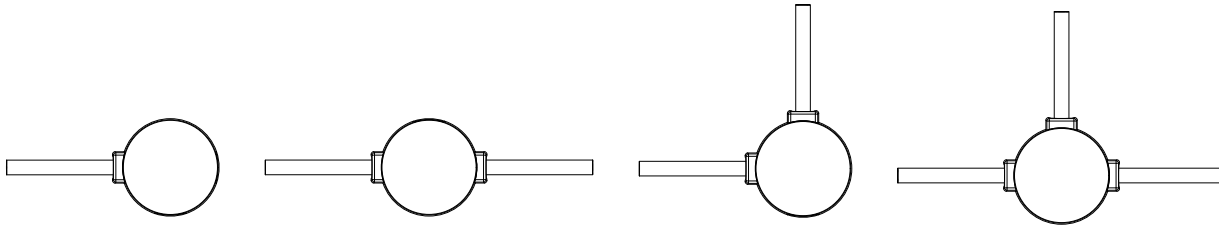
**SUITABLE FOR SLOPED CEILING**



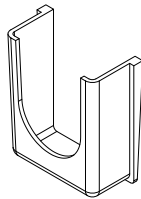
**ADJUSTABILITY**



**CONDUIT FEED CANOPY MOUNTING OPTIONS**



CONDUIT COVER  
3 PROVIDED WITH EACH  
CONDUIT FEED CANOPY



BLANK  
2 PROVIDED WITH EACH  
CONDUIT FEED CANOPY

