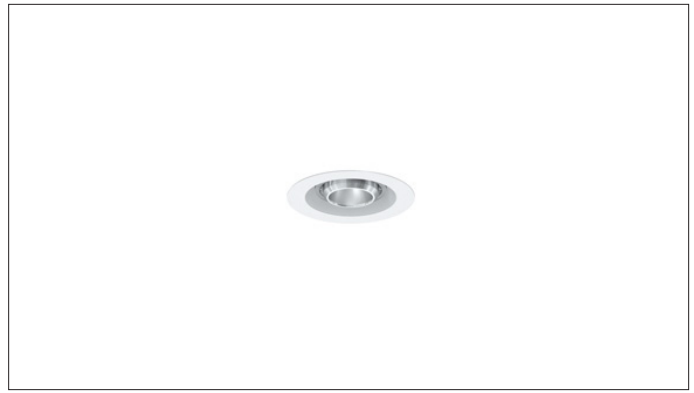




3G-RC1M5-4RD

4" ROUND MINI MADISON
DYNAMIC WHITE

New construction and IC housing options available
 Machined aluminum insert with seamless ceiling integration
 Trim fixture designed to conceal internal hardware
 Machined aluminum double gimbal. Adjustable and lockable
 1.95" Regressed LED source for enhanced glare control
 Dim to Warm and Tunable White LED options up to 2000lm (90+ CRI)
 1% dimming standard with several integral driver options



ORDERING INFORMATION

PROJECT:	<input type="text"/>	TYPE:	<input type="text"/>
CATALOG #:	<input type="text"/>	DATE:	<input type="text"/>

CAT. NO	LED SOURCE	LUMEN OUTPUT	CRI	BEAM ANGLE	VOLTAGE
3G-RC1M5-4RD	DW - DIM TO WARM (1800-3000K)	08 - 800 LUMENS 12 - 1200 LUMENS	H90 - 90+ CRI	20D - 20° ² 40D - 40° 60D - 60° 90D - 90° *	UNV - 120/277V 120 - 120V 347 - 347V (0-10V ONLY)
	TW - TUNABLE WHITE ¹ (2700K-6500K)	20 - 2000 LUMENS			

* 90D reflector supplied standard with lens

DRIVER	FLANGE TYPE	GIMBAL FINISH	HOUSING INTERIOR
DIM - 0-10V (STANDARD 100-1%) LE - PHASE DIMMING ³ (TRIAC/ELV, 100-1%) D01 - 0-10V (eIdoLED, 100-0.1%) ¹ DALI - DALI (eIdoLED, 100-1%) ^{1,4} DHL2 - LUTRON HI-LUME LDE1 (1% ECOSYSTEM) DMX - DMX (eIdoLED, 100-0%) ¹	WT - WHITE (STANDARD) ST - SILVER BT - BLACK CT - CUSTOM XTR - TRIMLESS (MUD-IN DRYWALL)	NG - NATURAL ALUMINUM BG - BLACK WG - WHITE	BK - BLACK

HOUSING TYPE	OPTIONS
NC - NEW CONSTRUCTION (NON-IC) IC - IC HOUSING	BH - C-CHANNEL BAR HANGERS CP - CHICAGO PLENUM EMR - EMERGENCY BATTERY (REMOTE) ⁵ HXB50 - BLACK HEXCELL LOUVER LS50 - LINEAR SPREAD LENS PM50 - PRISMATIC LENS SF50 - SOFTENING LENS

Maximum 2 optical accessories. See optical accessories page for more options

¹ Tunable White option available with D01, DALI and DMX drivers
² 20D reflector available with 800 lumen output only
³ Phase dimming options available in 120V only
⁴ DALI-2 (Type 6) provided as standard. Please consult factory for DALI (Type 8) options
⁵ Fixture operates at 6500K in emergency mode. Emergency battery installed remotely by others. Not accessible through the inside of the fixture

3GD - Warm Dim
3GT - Tunable White

DECEMBER 14, 2023

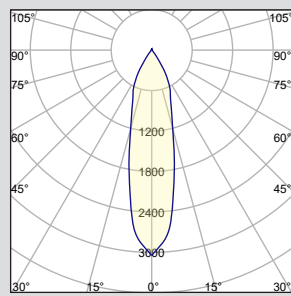


PERFORMANCE CHART BASED ON 60° BEAM AND 3000K SOURCE

DIM TO WARM LUMEN OUTPUT	90+ CRI (3000K)		
	DELIVERED LUMENS	SYSTEM WATTS	EFFICACY (LPW)
800LMs	N/A	N/A	N/A
1200LMs	1145	15.4	74
2000LMs	1611	23.2	69

PHOTOMETRY

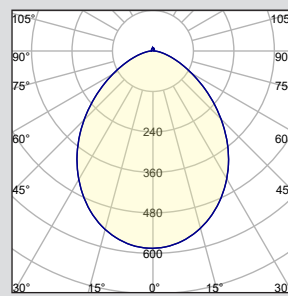
20D - 20° BEAM ANGLE



3G-RC1M5-4RD-DW-8-H90-20D

LUMEN OUTPUT: 800LMs
 DELIVERED LUMENS: 685LMs
 SYSTEM WATTS: 10.3W
 EFFICACY: 66LPW
 CRI: 90+
 CCT: 3000K

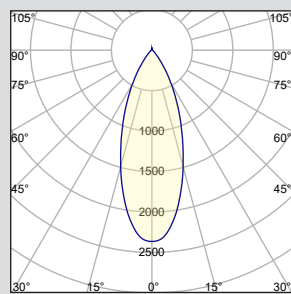
90D - 90° BEAM ANGLE



3G-RC1M5-4RD-DW-12-H90-90D

LUMEN OUTPUT: 1200LMs
 DELIVERED LUMENS: 1054LMs
 SYSTEM WATTS: 15.4W
 EFFICACY: 68LPW
 CRI: 90+
 CCT: 3000K

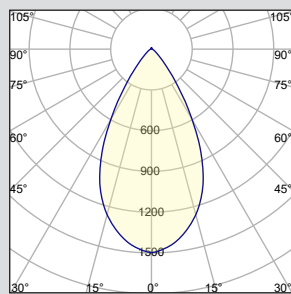
40D - 40° BEAM ANGLE



3G-RC1M5-4RD-DW-12-H90-40D

LUMEN OUTPUT: 1200LMs
 DELIVERED LUMENS: 1113LMs
 SYSTEM WATTS: 15.4W
 EFFICACY: 72LPW
 CRI: 90+
 CCT: 3000K

60D - 60° BEAM ANGLE



3G-RC1M5-4RD-DW-12-H90-60D

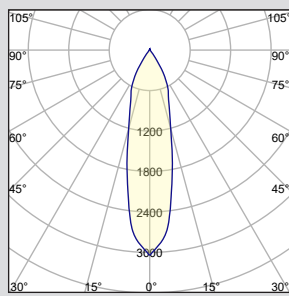
LUMEN OUTPUT: 1200LMs
 DELIVERED LUMENS: 1145LMs
 SYSTEM WATTS: 15.4W
 EFFICACY: 74LPW
 CRI: 90+
 CCT: 3000K

PERFORMANCE CHART BASED ON 60° BEAM ANGLE

TUNABLE WHITE LUMEN OUTPUT	90+ CRI (2700K)			90+ CRI (3500K)			90+ CRI (6500K)		
	DELIVERED LUMENS	SYSTEM WATTS	EFFICACY (LPW)	DELIVERED LUMENS	SYSTEM WATTS	EFFICACY (LPW)	DELIVERED LUMENS	SYSTEM WATTS	EFFICACY (LPW)
800LMs	N/A	N/A	N/A	N/A	N/A	N/A	N/A	N/A	N/A
1200LMs	1076	16.6	65	1127	16.6	68	1266	16.6	76
2000LMs	1523	24.5	62	1558	24.5	64	1824	24.5	74

PHOTOMETRY

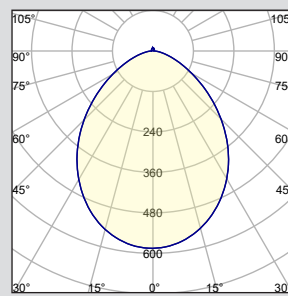
20D - 20° BEAM ANGLE



3G-RC1M5-4RD-TW-8-H90-20D

LUMEN OUTPUT: 800LMs
 DELIVERED LUMENS: 715LMs
 SYSTEM WATTS: 12.6W
 EFFICACY: 57LPW
 CRI: 90+
 CCT: 3500K

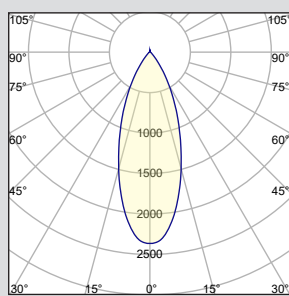
90D - 90° BEAM ANGLE



3G-RC1M5-4RD-TW-12-H90-90D

LUMEN OUTPUT: 1200LMs
 DELIVERED LUMENS: 1037LMs
 SYSTEM WATTS: 16.6W
 EFFICACY: 62LPW
 CRI: 90+
 CCT: 3500K

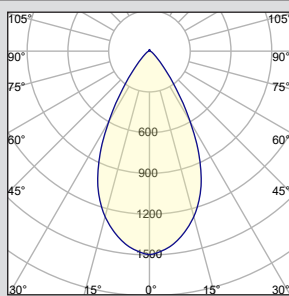
40D - 40° BEAM ANGLE



3G-RC1M5-4RD-TW-12-H90-40D

LUMEN OUTPUT: 1200LMs
 DELIVERED LUMENS: 1121LMs
 SYSTEM WATTS: 16.6W
 EFFICACY: 68LPW
 CRI: 90+
 CCT: 3500K

60D - 60° BEAM ANGLE



3G-RC1M5-4RD-TW-12-H90-60D

LUMEN OUTPUT: 1200LMs
 DELIVERED LUMENS: 1127LMs
 SYSTEM WATTS: 24.5W
 EFFICACY: 68LPW
 CRI: 90+
 CCT: 3500K

TECHNICAL**HOUSING**

- New construction and IC housing options available
- Housing fabricated in cold rolled steel. Standard black powder coated finish
- Maximum ceiling thickness of 1". Consult factory for modifications
- All housing options designed to be easily converted in field to trim or trimless with minimal components
- Housings are rated for #12 AWG, (4 in, 4 out), 90°C conductors and through branch wiring

TRIM

- Features a 3/4" removable trim assembly designed to conceal inner hardware

TRIMLESS

- Mudding flange with integral aluminum blocking support
- Machined aluminum insert with seamless ceiling integration

ADJUSTABILITY

- Solid aluminum 50mm double gimbal with dual axis adjustability
- Each double gimbal can be locked in place

OPTICS

- Regressed LED source for enhanced glare control
- Proprietary anodized, aluminum reflectors are field replaceable
- Available in 20°, 40°, 60° and 90°

ELECTRICAL

- Standard 0-10V, constant current drivers with 100-1% dimming range and >0.9 power factor
- Standard 120/277V universal voltage drivers. Optional 347V, 0-10V drivers
- 120V Forward Phase/Reverse Phase driver option with 100-1% dimming range
- eldoLED 0-10V driver option available with 100-0.01% dimming range
- eldoLED DALI and Lutron EcoSystem driver options available with 100-1% dimming range
- DMX driver option available with 100-0% dimming range
- All drivers are integral and easily accessible through fixture aperture

LED SYSTEM

- Bridgelux LED module (field replaceable)
- Color consistency <3 SDCM
- Standard 90+ CRI
- Dim to Warm (1800K-3000K)
- Tunable White (2700K-6500K)
- L70 >50,000 hours
- 5 Year Warranty

MOUNTING

- Trim fixture designed for use in drywall, wood, acoustic ceiling tiles, and other architectural ceiling materials
- Trimless fixture designed for use in drywall, mud-in ceiling applications
- Butterfly brackets compatible with 1/2" x 1/2" channel, 1/2", 5/8", 3/4" bar hanger, 1/2" EMT, and furring strips (supplied by others)

LISTING

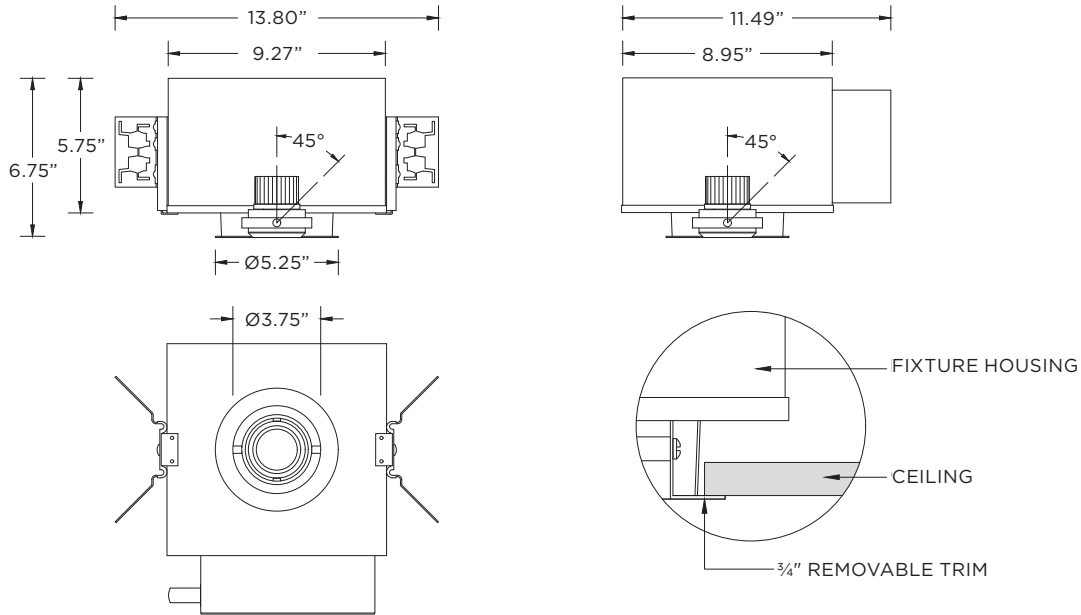
- ETL listed and conforms to UL1598 standard. Certified to CSA22.2 NO.250.0. Rated for indoor dry or damp locations

WARRANTY

- 5 Year Warranty on LED and drivers
- Manufacturer 1 Year Warranty for defects in material and workmanship under normal use
- Ambient temperature at fixture should not exceed 25°C

TRIM HOUSING OPTIONS

- NC** - New Construction (Non-IC)
- IC** - IC Housing
- CP** - Chicago Plenum Housing



TRIMLESS HOUSING OPTIONS

- NC** - New Construction (Non-IC)
- IC** - IC Housing
- CP** - Chicago Plenum Housing

