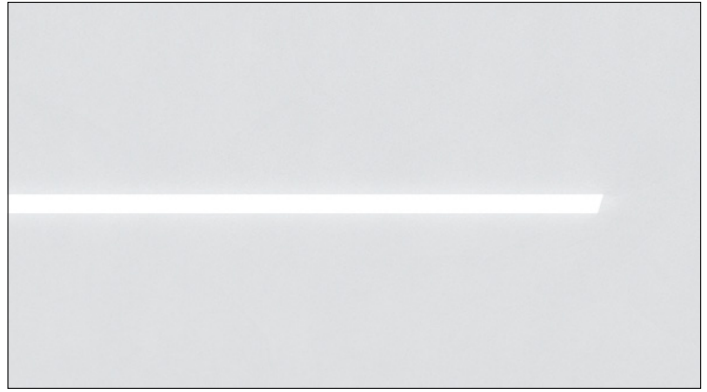




3GQ-2RLI

2" RECESSED LINEAR



2" aperture with one piece extruded aluminum housing
 DLC listed with performance up to 139 lumens per watt
 Individual or continuous runs available (see quickship run chart)
 Lumen outputs ranging from 250lm/ft to 1000lm/ft
 Universal voltage, 0-10V integral drivers with 100-1% dimming range
 Suitable for drywall, grid, wood, and other architectural ceilings
 Extruded acrylic lens with optimal performance and glare control

10 DAY QUICKSHIP
 MAX ORDER SIZE: 400'



PROJECT:		TYPE:	
CATALOG#:		DATE:	QTY:

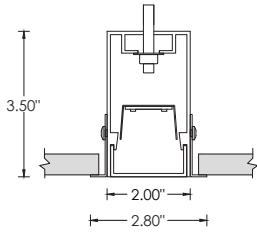
CAT. NO	LUMEN OUTPUT	CRI	COLOR TEMP	VOLTAGE	DRIVER
3GQ-2RLI	D250 - 250 LM/FT D500 - 500 LM/FT D750 - 750 LM/FT D1000 - 1000 LM/FT	S80 - 80+ CRI H90 - 90+ CRI	30K - 3000K 35K - 3500K 40K - 4000K	UNV - 120/277V	DIM - 0-10V (100-1%)

FLANGE TYPE	LENS OPTION	RUN TYPE
WT - WHITE TRIM XTR - TRIMLESS (MUD-IN DRYWALL) FX - FLANGELESS GCX - GRID CEILING * (UNIVERSAL MOUNT) <small>*Universal mounting brackets used for all grid ceiling types only. See mounting section for details</small>	FL - FLUSH DASY - ASYMMETRIC OPTIC	S - _____ (STRAIGHT RUN) * <small>Individual fixtures available in 4', 5', 6' and 8' Continuous runs starting at 10' and 12' Runs longer than 12' available in 4' increments (16', 20', 24' etc)</small>

Refer to standard specification sheets for complete details. Please note that only options shown above qualify for 10 day 3GQ program

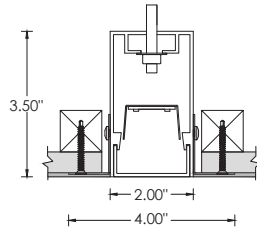
HARD CEILING

WT - TRIM



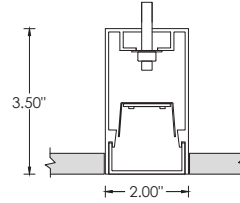
RECOMMENDED CEILING OPENING 2.3"

XTR - TRIMLESS



RECOMMENDED CEILING OPENING 2.5"

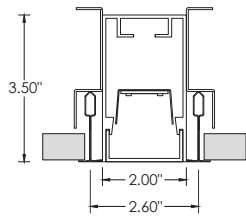
FX - FLANGELESS



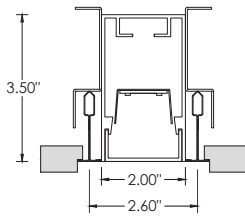
RECOMMENDED CEILING OPENING 2.063"

GRID CEILING

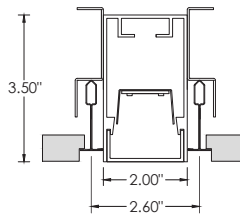
9L - 9/16" LAYIN



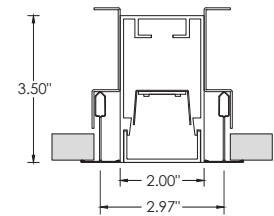
9TG - 9/16" TEGULAR



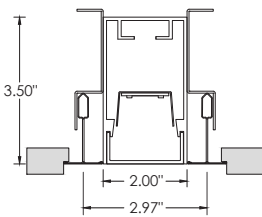
15L - 15/16" LAYIN



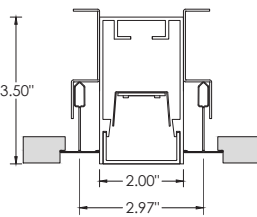
15TG - 15/16" TEGULAR



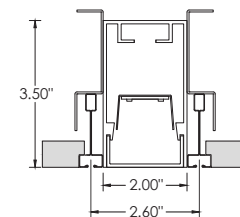
9TP - 9/16" TEGULAR



15TP - 15/16" TEGULAR



9ST - 9/16" SLOT TEE TEGULAR



Grid ceiling fixtures ship with universal mounting brackets suitable for all ceiling types listed below. Refer to installation instruction

QUICKSHIP RUN CHART

RUN LENGTH	SECTION LENGTHS	RUN LENGTH	SECTION LENGTHS	RUN LENGTH	SECTION LENGTHS
4'	4'	12'	8'+4'	32'	8'+8'+8'+8'
5'	5'	16'	8'+8'	36'	8'+8'+8'+8'+4'
6'	6'	20'	8'+8'+4'	40'	8'+8'+8'+8'+8'
8'	8'	24'	8'+8'+8'	44'	8'+8'+8'+8'+8'+4'
10'	5'+5'	28'	8'+8'+8'+4'	48'	8'+8'+8'+8'+8'+8'