

3G LIGHTING

3G-DL45RA

4.5" ROUND ADJUSTABLE
DOWNLIGHT

4.5" round, adjustable high performance downlight
Energy Star and JA8 certified with max 1500lm output
Proprietary hot aiming mechanism with sliding center beam optimization
0° - 40° lockable tilt and 362° lockable rotation
Regressed LED source for enhanced glare control
Lumen range up to 4000lm (80+, 90+, and 97+ CRI options)
Remodel housing available along with other housing options
1% dimming standard with several integral driver options



PROJECT:		TYPE:	
CATALOG#:		DATE:	QTY:

CAT. NO	LUMEN OUTPUT	CRI	COLOR TEMP	BEAM ANGLE	VOLTAGE
3G-DL45RA	10 - 1000 LUMENS	S80 - 80+ CRI ¹	27K - 2700K	10D - 10° ²	UNV - 120/277V
	15 - 1500 LUMENS *	H90 - 90+ CRI	30K - 3000K	20D - 20°	120 - 120V
	22 - 2200 LUMENS	H97 - 97+ CRI ¹	35K - 3500K	40D - 40°	347 - 347V ³
	30 - 3000 LUMENS		40K - 4000K	60D - 60°	
	40 - 4000 LUMENS				
	*Energy Star and JA8 (Title 24) max lumen output is 1500lm.				

DRIVER	FLANGE TYPE	BEVELED INSERT	HOUSING TYPE
DIM - 0-10V (100-1%) LE - PHASE DIM ⁴ <small>(TRIAC/ELV, 100-1%)</small> DO1 - 0-10V (100-0.1%) DALI - DALI (100-1%) ⁵ DHL2 - LUTRON HI-LUME <small>(1% ECOSYSTEM)</small> DMX - DMX (100-0%)	WT - WHITE TRIM BT - BLACK TRIM ST - SILVER TRIM XTR - TRIMLESS (MUD-IN DRYWALL) MWF - FLANGELESS MILLWORK ⁶	WI - WHITE BI - BLACK SI - SILVER	RMD - REMODEL (NON-IC) NCF - NEW CONSTRUCTION <small>FRAME (NON-IC)</small> NC - NEW CONSTRUCTION <small>HOUSING (CP RATED)</small> IC - NEW CONSTRUCTION <small>IC HOUSING ⁷</small> <small>NCF housings ship with bar hangers NC and IC housings available with optional C-channel bar hangers</small>

OPTIONS
LS - LINEAR SPREAD LENS SB - SANDBLASTED LENS SF - SOFTENING LENS (SUPPLIED STANDARD) WL - WET LOCATION ⁸ CP - CHICAGO PLENUM ⁹ BH - C-CHANNEL BAR HANGERS EMR - EMERGENCY BATTERY (REMOTE) ¹⁰ <small>Maximum 1 optical accessory BH - C-channel bar hangers optional for NC and IC housings only All other housing types ship standard with bar hangers</small>

- ¹ 97+ CRI available up to 3000lm. Available in 30K and 35K as standard
- ² 10D reflector available up to 2200lm
- ³ 347 available in "DIM" 0-10V only (100-1%)
- ⁴ Phase dimming options available in 120V only
- ⁵ DALI-2 (Type 6) provided as standard. Please consult factory for DALI (Type 8) options
- ⁶ MWF not available with Remodel (NON-IC)
- ⁷ New Construction IC housing available up to 2200lm
- ⁸ Wet location option provided standard with sealed softening lens
- ⁹ Chicago Plenum option available with New Construction Housing
- ¹⁰ Emergency battery installed remotely by others. Not accessible through the inside of the fixture



Energy Star Listing available with 1500lm maximum
Available in 80CRI with 30K, 35K, and 40K options only
Driver options include "DIM" (0-10V) and "LE" (Phase dimming)

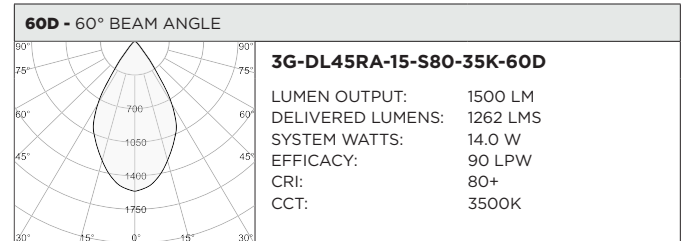
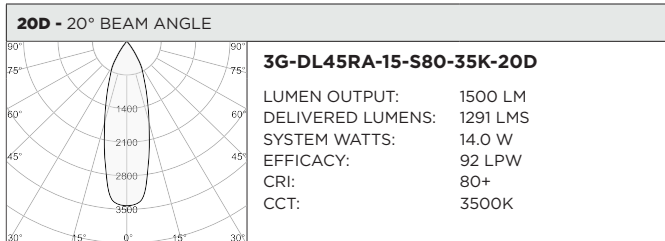
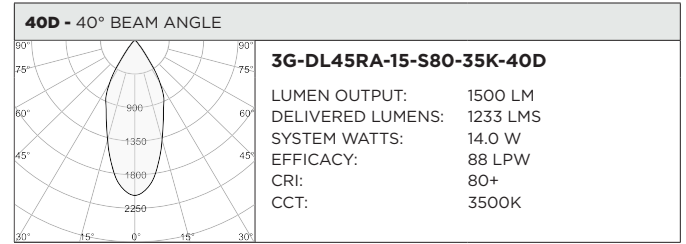
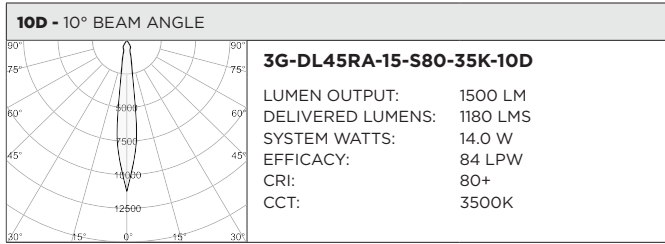


JA8 (Title 24) Listing available with 1500lm maximum
Available in 90CRI only
Driver options include "DIM" (0-10V) and "LE" (Phase dimming)

BASED ON 20° BEAM ANGLE AND 3500K SOURCE WITH SOFTENING LENS

LUMEN OUTPUT	80+ CRI			90+ CRI			97+ CRI		
	DELIVERED LUMENS	SYSTEM WATTS	EFFICACY (LPW)	DELIVERED LUMENS	SYSTEM WATTS	EFFICACY (LPW)	DELIVERED LUMENS	SYSTEM WATTS	EFFICACY (LPW)
1000LMs	986	10.3	96	868	10.3	84	809	10.3	78
1500LMs	1291	14.0	92	1136	14.0	81	1058	14.0	76
2200LMs	1958	22.0	89	1723	22.0	78	1606	22.0	73
3000LMs	2506	31.3	80	2206	31.3	70	2055	31.3	66
4000LMs	3531	43.0	82	3107	43.0	72	N/A	N/A	N/A

LUMEN OUTPUT MULTIPLIER: 27K=0.94, 30K=0.97, 35K=1.00, 40K=1.01



HOUSING

Remodel, new construction frame, and IC housing options available
Maximum ceiling thickness of 1.5". Consult factory for modifications
All housing options (except millwork) designed to be easily converted in field to trim or trimless with minimal components
Housing rated for #12 AWG (4 in, 4 out), 90°C conductors and through branch wiring

BEVELED INSERT

Cast aluminum beveled insert with matte powder coated finish
4.5" aperture with regressed LED source for enhanced glare control

TRIM

Machined aluminum trim flange with matte powder coated finish and minimal 0.375" overlap

TRIMLESS

Mudding flange features a perforated surface for easy mud-in application
Integral blocking support provided to ensure fixture is properly secured within ceiling structure

ADJUSTABILITY

Proprietary hot aiming mechanism with sliding center beam optimization
0° - 40° lockable tilt and 362° lockable rotation with Phillips screwdriver

OPTICS

Regressed LED source for enhanced glare control
Proprietary anodized, aluminum reflectors are field replaceable (10° reflector not interchangeable)
Available in 10°, 20°, 40°, 60°
All models provided standard with softening lens

LISTING

ETL listed and conforms to UL1598 standard. Certified to CSA22.2 No.250.0.
Energy Star and JA8 certified
Rated for indoor dry or damp locations

WARRANTY

5 Year Warranty on LED and drivers
Manufacturer 1 Year Warranty for defects in material and workmanship under normal use
Ambient temperature at fixture should not exceed 25°C

ELECTRICAL

Standard 0-10V, constant current drivers with 100-1% dimming range and >0.9 power factor
120V Forward Phase/Reverse Phase driver option with 100-1% dimming range
Standard 120/277V universal voltage with several driver options
All drivers are integral and easily accessible through luminaire aperture
Optional remote emergency battery installed by others. Not accessible through fixture aperture. 10W output for 90 minutes (+/- 1000lm at 80+ CRI)

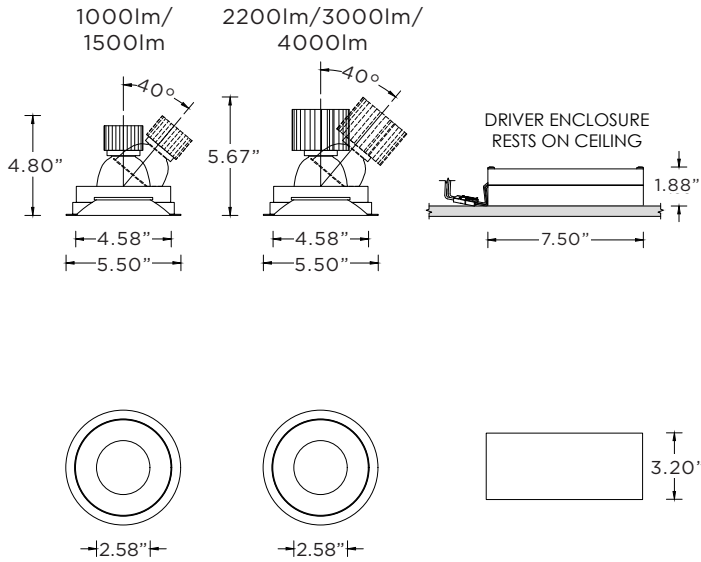
LED SYSTEM

<2 SDCM LED module (field replaceable)
Standard (80+ CRI). Optional (90+ and 97+ CRI)
Available in 27K, 30K, 35K, and 40K
L90 >50,000 hours
5 Year Warranty

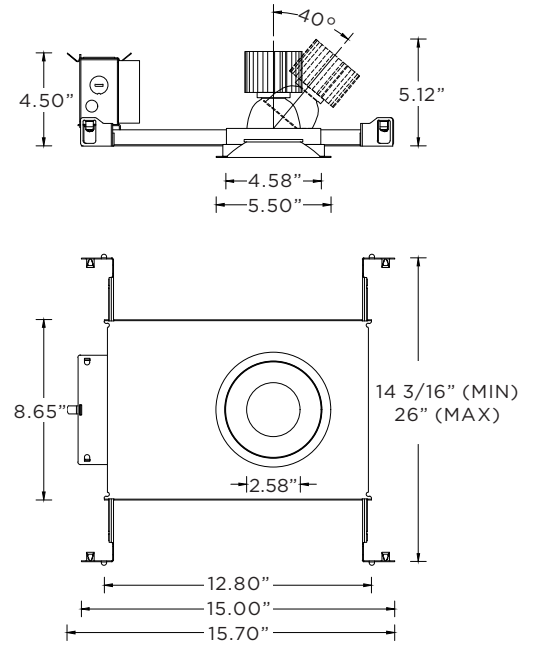
MOUNTING

Trim fixture designed for use in drywall, wood, acoustic, and other architectural ceilings
Trimless fixture designed for use in drywall, mud-in ceiling applications
Recommended ceiling cut-out for all housing options (5 1/8" diameter).
Millwork Flangeless (4.78" diameter)
New construction frame ships with bar hangers (14" to 26" extension)
Standard new construction and IC housings available with optional c-channel bar hangers

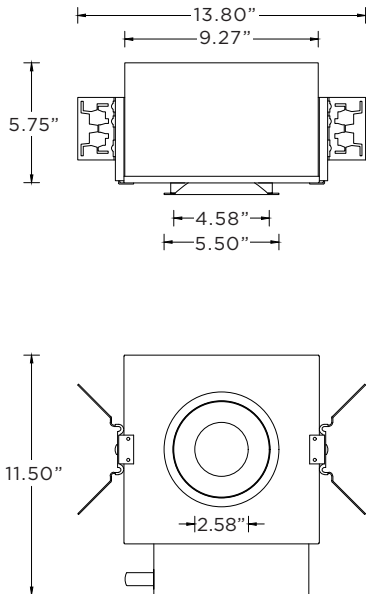
RMD - REMODEL (NON-IC)



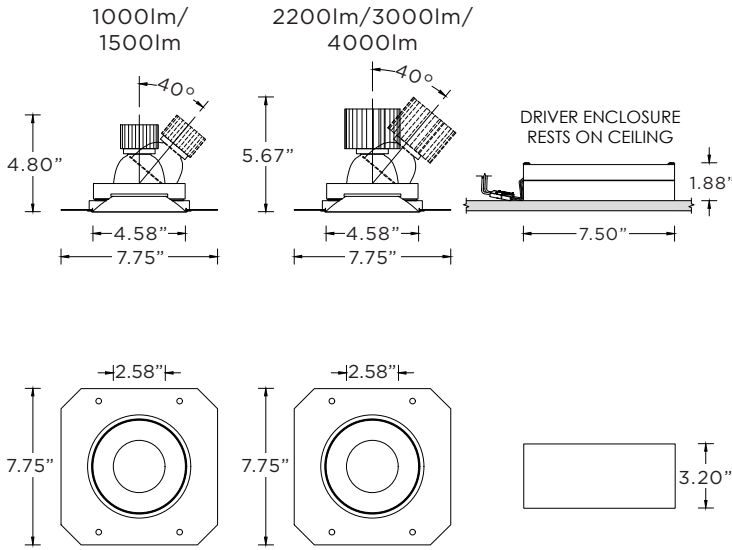
NCF - NEW CONSTRUCTION FRAME (NON-IC)



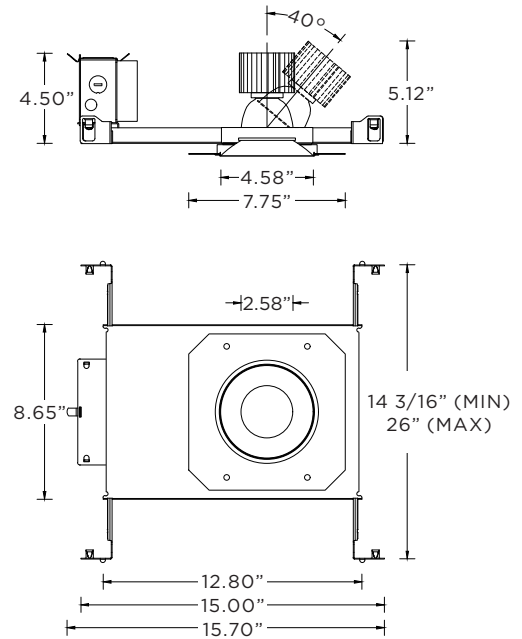
NC - NEW CONSTRUCTION HOUSING (NON-IC AND CP RATED)
IC - NEW CONSTRUCTION IC HOUSING (2200LM MAX)



RMD - REMODEL (NON-IC)



NCF - NEW CONSTRUCTION FRAME (NON-IC)



NC - NEW CONSTRUCTION HOUSING (NON-IC AND CP RATED)
IC - NEW CONSTRUCTION IC HOUSING (2200LM MAX)

