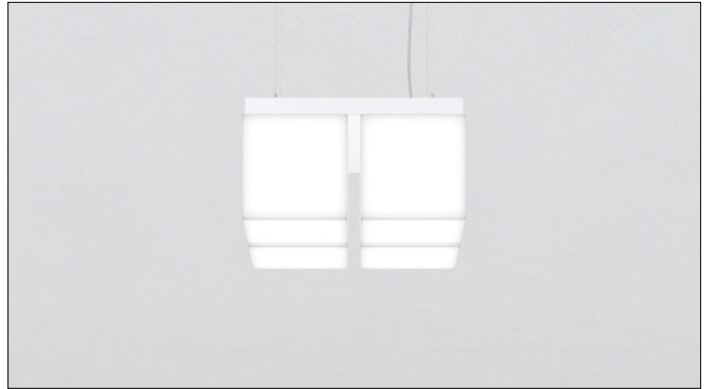




3G-PKU822

8" MULTIPLE SQUARE
PENDANT KUBO



Featuring a white sandblasted acrylic diffuser with mitered corners
Proprietary LED source fully saturates the hand fabricated acrylic
Evenly illuminated sides with distinctive lines
Standard and high lumen output options
Adjustable aircraft cable suspension
1% dimming standard with several driver options

PROJECT:		TYPE:	
CATALOG#:		DATE:	QTY:

CAT. NO	LUMEN OUTPUT	CRI	COLOR TEMP	VOLTAGE
3G-PKU801	L2 - STANDARD OUTPUT L4 - HIGH OUTPUT	S80 - 80+ CRI	27K - 2700K 30K - 3000K 35K - 3500K 40K - 4000K	UNV - 120/277V 347 - 347V ¹

DRIVER	FINISH	CABLE LENGTH
DIM - 0-10V (100-1%) DO1 - 0-10V (100-0.1%) DALI - DALI (100-1%) ² DHL2 - LUTRON HI-LUME (1% ECOSYSTEM)	WH - WHITE (STANDARD) BK - BLACK SV - SILVER	60" - 60" (STANDARD) 120" - 120"

¹ 347 available in "DIM" 0-10V only (100-1%)

² DALI-2 (Type 6) provided as standard. Please consult factory for DALI (Type 8) options

BASED ON 80+ CRI AND 3500K SOURCE

LENS OPTION	DELIVERED LUMENS	SYSTEM WATTS	EFFICACY (LPW)
L2 - STANDARD OUTPUT	1500	45	33
L4 - HIGH OUTPUT	612	18	33

PRELIMINARY

LUMEN OUTPUT MULTIPLIER: 27K=0.94, 30K=0.97, 35K=1.00, 40K=1.01

HOUSING

White sandblasted acrylic diffuser with mitered corners
 Fixture collar made from cold rolled steel with powder coated finish
 24 gauge LED reflector with high reflectance white powder coated finish
 Standard polyester powder coated matte white finish. Optional finishes available

LISTING

ETL listed and conforms to UL1598 standard. Certified to CSA22.2 NO.250.0. Rated for indoor dry or damp locations

WARRANTY

5 Year Warranty on LED and drivers
 Manufacturer 1 Year Warranty for defects in material and workmanship under normal use
 Ambient temperature at fixture should not exceed 25°C

ELECTRICAL

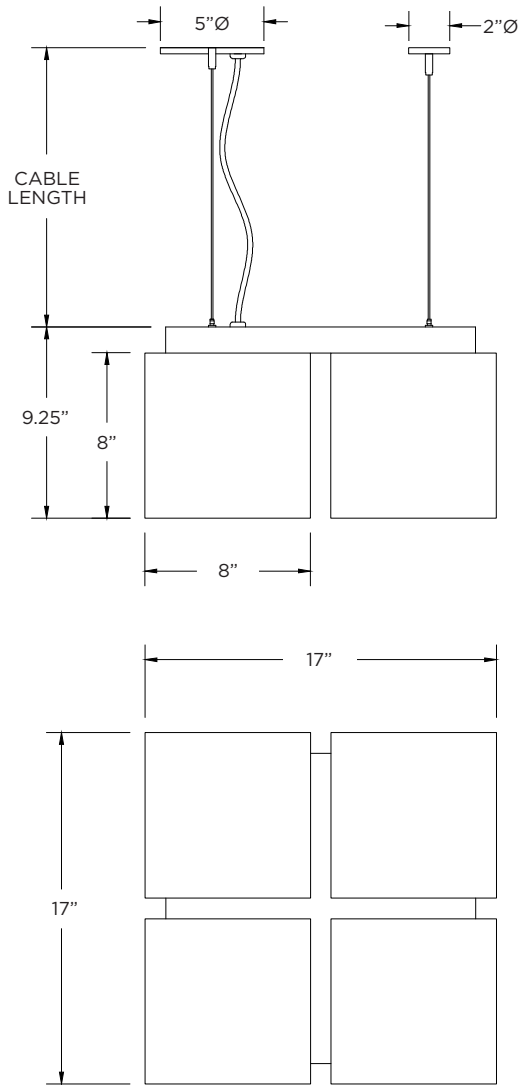
Standard 0-10V, constant current drivers with 100-1% dimming range and >0.9 power factor
 Standard 120/277V universal voltage drivers. Optional 347V, 0-10V drivers
 Lutron EcoSystem and eldoLED DALI options available with 100-1% dimming range
 All drivers are integral and easily accessible through luminaire aperture

LED SYSTEM

Proprietary LED system with color consistency <3 SDCM
 Available in 27K, 30K, 35K, and 40K
 Standard 80+CRI
 L90 >60,000 hours
 5 Year Warranty

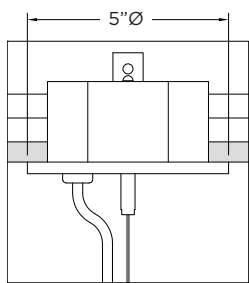
MOUNTING

Adjustable aircraft cable suspension with locking fasteners (60" length standard)
 Standard, 18-gauge, 5 conductor single circuit power feed (clear braided finish)
 All mounting canopies provided in white finish as standard
 Suitable for various architectural ceilings (see mounting details)



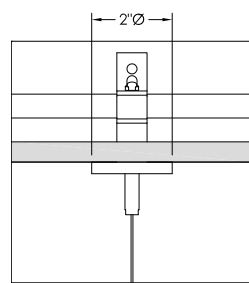
MOUNTING

GRID POWER FEED

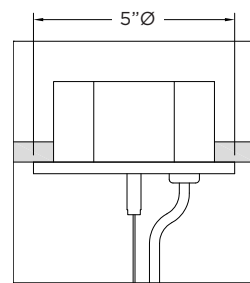


Slotted junction box by others

GRID NON POWER FEED



DRYWALL POWER FEED



Octagonal junction box by others

DRYWALL NON POWER FEED

