

3G LIGHTING

3G-DL33SF

3.3" SQUARE FIXED
DOWNLIGHT



Small 3.3" square, high performance downlight
 JA8 certified with max 1500lm output
 Regressed LED source for enhanced glare control
 Lumen range up to 3000lm (80+, 90+, and 97+ CRI options)
 Wet location option available
 Shallow housing available along with remodel and other housing options
 1% dimming standard with several integral driver option



PROJECT:		TYPE:	
CATALOG#:		DATE:	QTY:

CAT. NO	LUMEN OUTPUT	CRI	COLOR TEMP	BEAM ANGLE	VOLTAGE
3G-DL33SF	10 - 1000 LUMENS 15 - 1500 LUMENS * 22 - 2200 LUMENS 30 - 3000 LUMENS <small>*JA8 (Title 24) max lumen output is 1500lm.</small>	S80 - 80+ CRI ¹ H90 - 90+ CRI H97 - 97+ CRI ¹	27K - 2700K 30K - 3000K 35K - 3500K 40K - 4000K	20D - 20° ² 40D - 40° 60D - 60° 90D - 90° * <small>*90D reflector supplied standard with lens</small>	UNV - 120/277V 120 - 120V 347 - 347V ³

DRIVER	FLANGE TYPE	BEVELED INSERT	HOUSING TYPE
DIM - 0-10V (100-1%) LE - PHASE DIM ⁴ <small>(TRIAC/ELV, 100-1%)</small> DO1 - 0-10V (100-0.1%) ⁵ DALI - DALI (100-1%) ⁵ DHL2 - LUTRON HI-LUME <small>(1% ECOSYSTEM)</small> DMX - DMX (100-0%) ⁵	WT - WHITE TRIM BT - BLACK TRIM ST - SILVER TRIM XTR - TRIMLESS (MUD-IN DRYWALL) MWF - FLANGELESS MILLWORK ⁶	WI - WHITE BI - BLACK SI - SILVER	RMD - REMODEL (NON-IC) NCF - NEW CONSTRUCTION FRAME (NON-IC) SH - SHALLOW HOUSING ⁷ <small>(IC RATED & CP RATED)</small> NC - NEW CONSTRUCTION HOUSING (CP RATED) IC - NEW CONSTRUCTION IC HOUSING ⁷

OPTIONS
LS - LINEAR SPREAD LENS SB - SANDBLASTED LENS SF - SOFTENING LENS (SUPPLIED STANDARD) WL - WET LOCATION ⁸ CP - CHICAGO PLENUM ⁹ BH - C-CHANNEL BAR HANGERS EMR - EMERGENCY BATTERY (REMOTE) ¹⁰ <small>Maximum 1 optical accessory</small>

¹ S80 not available in 27K. H97 available in 30K and 35K as standard
² 20D reflector available up to 2200lm
³ 347 available in "DIM" 0-10V only (100-1%)
⁴ Phase dimming options available in 120V only
⁵ DO1, DALI and DMX available up to 2200lm. DALI-2 (Type 6) provided as standard. Please consult factory for DALI (Type 8) options
⁶ MWF not available with Remodel (NON-IC)
⁷ IC rated Shallow Housing and New Construction IC housing available up to 2200lm
⁸ Wet location option provided standard with sealed softening lens. Not available with trimless option
⁹ Chicago Plenum option available with Shallow Housing (2200lm max) and New Construction Housing
¹⁰ Emergency battery installed remotely by others. Not accessible through the inside of the fixture

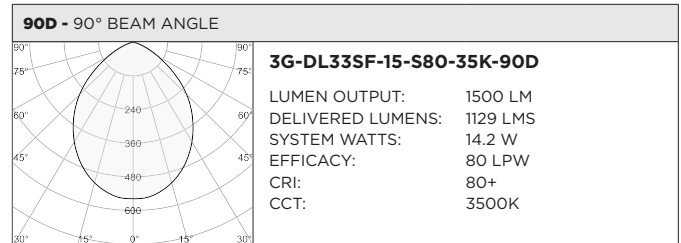
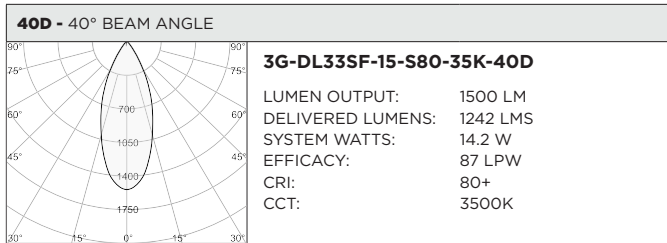
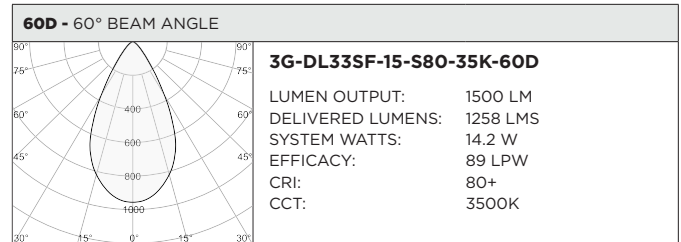
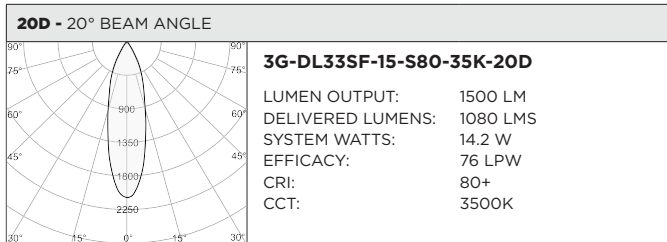


JA8 (Title 24) Listing available with 1500lm maximum
 Available in 90CRI only
 Driver options include "DIM" (0-10V) and "LE" (Phase dimming)

BASED ON 60° BEAM ANGLE AND 3500K SOURCE WITH SOFTENING LENS

LUMEN OUTPUT	80+ CRI			90+ CRI			97+ CRI		
	DELIVERED LUMENS	SYSTEM WATTS	EFFICACY (LPW)	DELIVERED LUMENS	SYSTEM WATTS	EFFICACY (LPW)	DELIVERED LUMENS	SYSTEM WATTS	EFFICACY (LPW)
1000LMs	925	10.4	89	814	10.4	78	759	10.4	73
1500LMs	1258	14.2	89	1107	14.2	78	1031	14.2	73
2200LMs	1832	22.5	81	1612	22.5	72	1502	22.5	67
3000LMs	2443	31.8	77	2150	31.8	68	2003	31.8	63

LUMEN OUTPUT MULTIPLIER: 27K=0.94, 30K=0.97, 35K=1.00, 40K=1.01



HOUSING

Remodel, new construction frame, shallow housing, and IC housing options available

Maximum ceiling thickness of 1.5". Consult factory for modifications

All housing options (except millwork) designed to be easily converted in field to trim or trimless with minimal components

Housing rated for #12 AWG (4 in, 4 out), 90°C conductors and through branch wiring

BEVELED INSERT

Cast aluminum beveled insert with matte powder coated finish
3.3" aperture with regressed LED source for enhanced glare control

TRIM

Cast aluminum trim flange with matte powder coated finish and minimal 0.375" overlap

TRIMLESS

Cast aluminum mudding flange features a grooved surface for easy mud-in application
Integral blocking support provided to ensure fixture is properly secured within ceiling structure

OPTICS

Regressed LED source for enhanced glare control
Proprietary anodized, aluminum reflectors are field replaceable (20° reflector not interchangeable)
Available in 20°, 40°, 60°, and 90°
All models provided standard with softening lens
Wet location option supplied standard with sealed softening lens

LISTING

ETL listed and conforms to UL1598 standard. Certified to CSA22.2 No.250.0.
JA8 certified
Rated for indoor dry or damp locations

WARRANTY

5 Year Warranty on LED and drivers
Manufacturer 1 Year Warranty for defects in material and workmanship under normal use
Ambient temperature at fixture should not exceed 25°C

ELECTRICAL

Standard 0-10V, constant current drivers with 100-1% dimming range and >0.9 power factor
Standard 120/277V universal voltage drivers. Optional 347V, 0-10V drivers
120V Forward Phase/Reverse Phase driver option with 100-1% dimming range
eldoLED 0-10V driver option available with 100-0.01% dimming range
eldoLED DALI and Lutron EcoSystem driver options available with 100-1% dimming range
DMX driver option available with 100-0% dimming range
All drivers are integral and easily accessible through fixture aperture

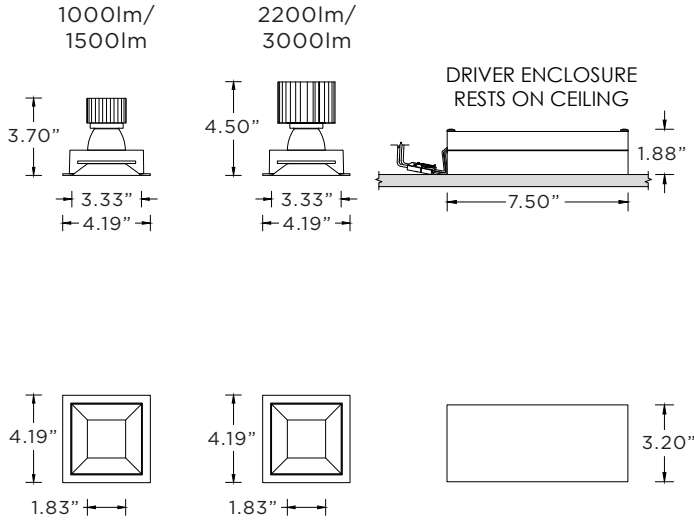
LED SYSTEM

<2 SDCM LED module (field replaceable)
Standard (80+ CRI). Optional (90+ and 97+ CRI)
Available in 27K, 30K, 35K, and 40K
L90 >50,000 hours
5 Year Warranty

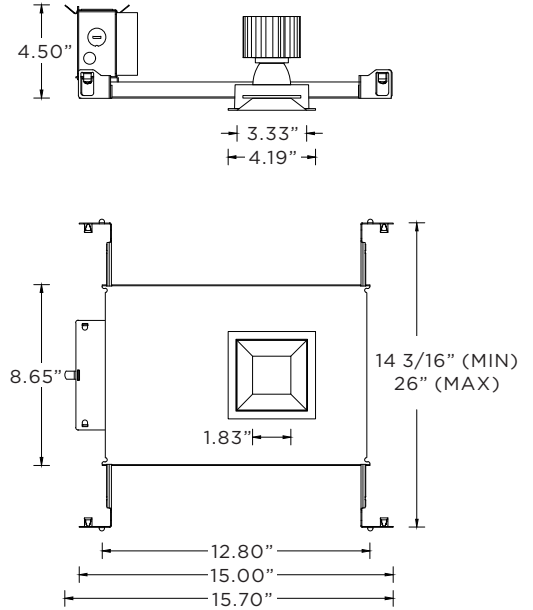
MOUNTING

Trim fixture designed for use in drywall, wood, acoustic, and other architectural ceilings
Trimless fixture designed for use in drywall, mud-in ceiling applications
Recommended ceiling cut-out for Millwork Flangeless option (3.625" x 3.625" for ceilings up to 1"). Contact 3G for thicker ceilings
Recommended ceiling cut-out for all housing options (3 15/16" x 3 15/16")
New construction frame and IC rated shallow housings ship with bar hangers (14" to 26" extension)
Standard new construction and IC housings available with optional c-channel bar hangers

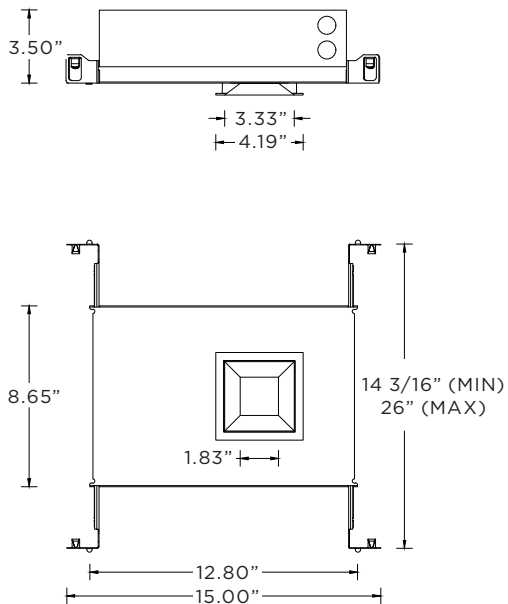
RMD - REMODEL (NON-IC)



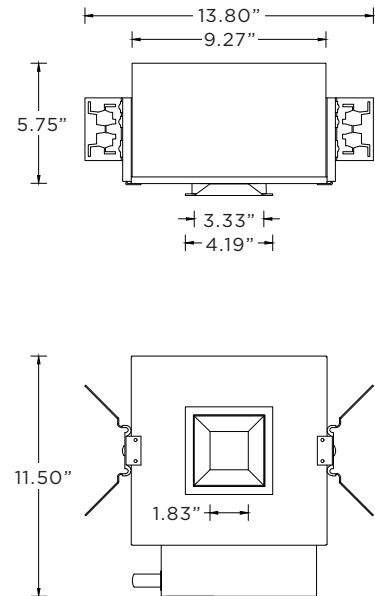
NCF - NEW CONSTRUCTION FRAME (NON-IC)



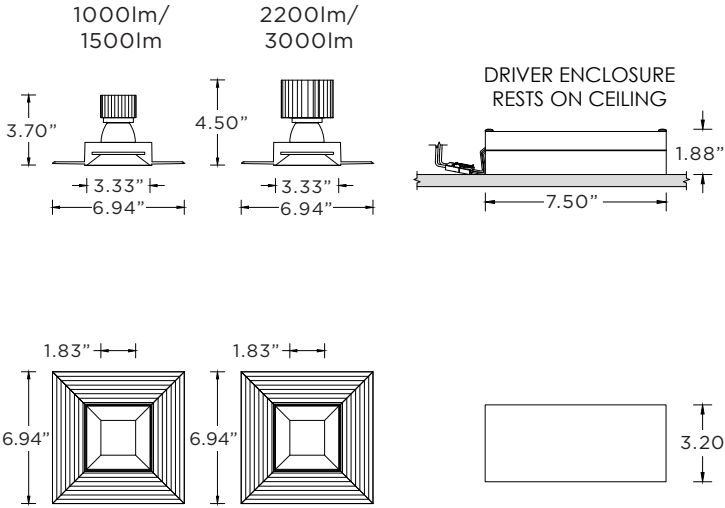
**SH - SHALLOW HOUSING (IC AND CHICAGO PLENUM RATED)
(2200LM MAX)**



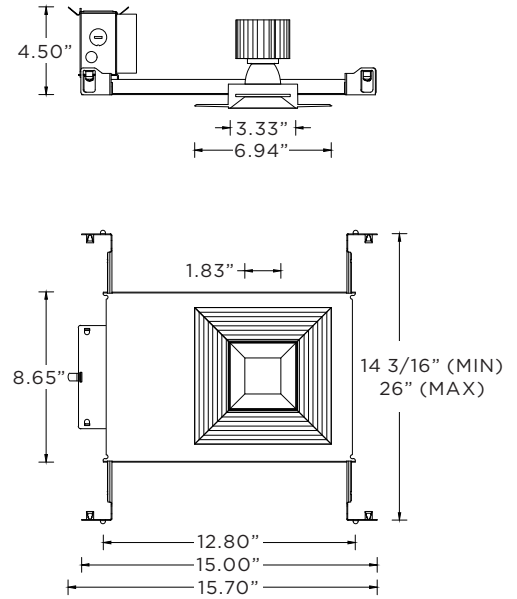
**NC - NEW CONSTRUCTION HOUSING (NON-IC AND CP RATED)
IC - NEW CONSTRUCTION IC HOUSING (2200LM MAX)**



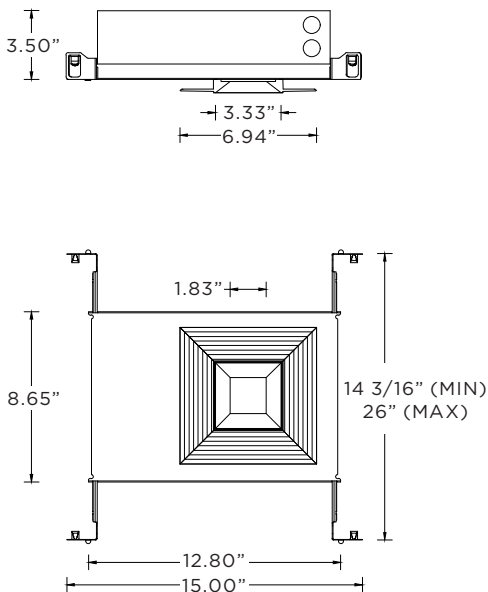
RMD - REMODEL (NON-IC)



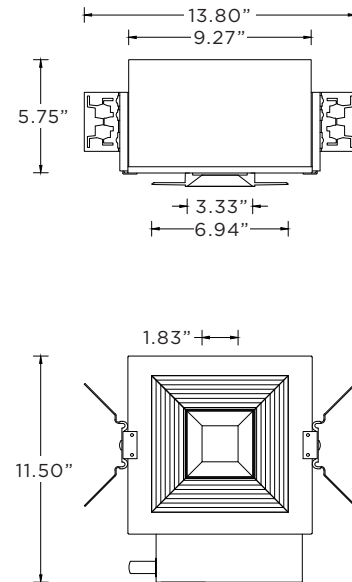
NCF - NEW CONSTRUCTION FRAME (NON-IC)



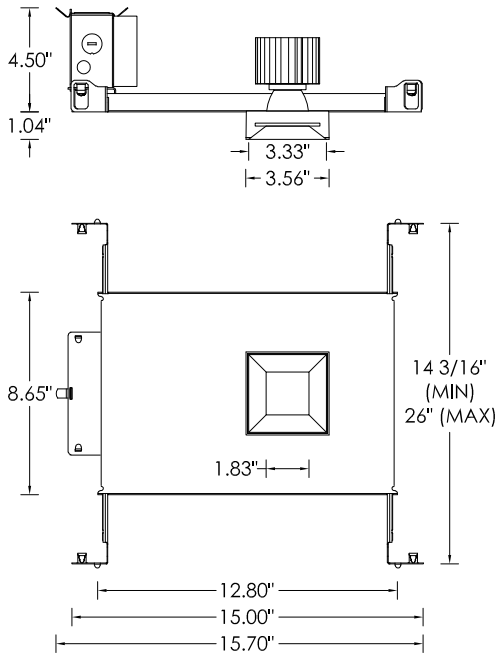
**SH - SHALLOW HOUSING (IC AND CHICAGO PLENUM RATED)
(2200LM MAX)**



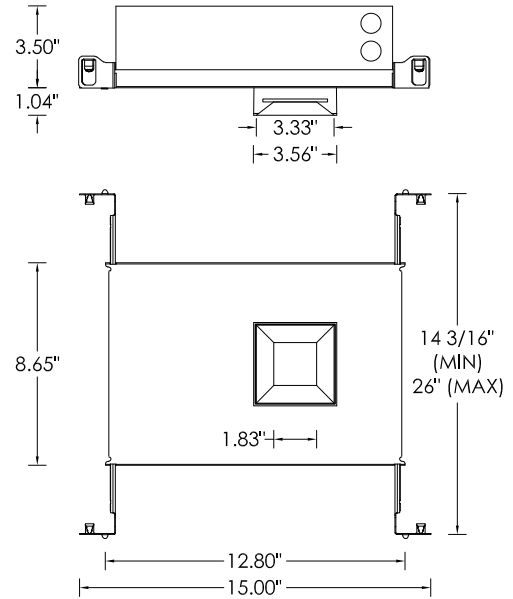
**NC - NEW CONSTRUCTION HOUSING (NON-IC AND CP RATED)
IC - NEW CONSTRUCTION IC HOUSING (2200LM MAX)**



NCF - NEW CONSTRUCTION FRAME (NON-IC)



**SH - SHALLOW HOUSING (IC AND CHICAGO PLENUM RATED)
(2200LM MAX)**



**NC - NEW CONSTRUCTION HOUSING (NON-IC AND CP RATED)
IC - NEW CONSTRUCTION IC HOUSING (2200LM MAX)**

