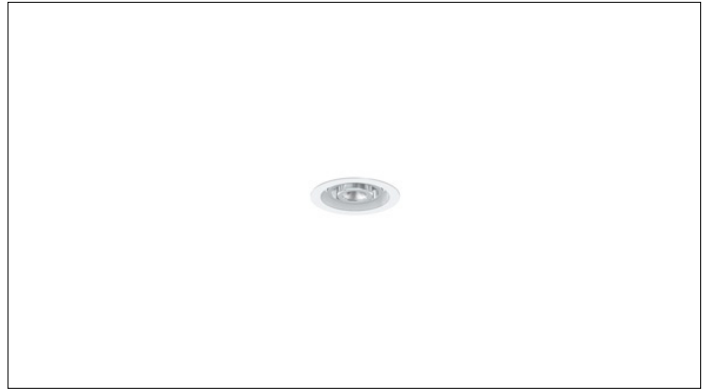




3G-RC1M3-3RD

3" ROUND MICRO MADISON



Small 3" round, adjustable Madison downlight
 1.2" Regressed LED source with enhanced glare control
 Machined aluminum double gimbal with dual axis adjustability
 Lumen range up to 1000lm (80+, 90+, and 97+ CRI options)
 New construction, IC rated shallow housing
 1% dimming standard with several integral driver options

PROJECT:		TYPE:	
CATALOG#:		DATE:	QTY:

CAT. NO	LUMEN OUTPUT	CRI	COLOR TEMP	BEAM ANGLE	VOLTAGE
3G-RC1M3-3RD	07 - 700 LUMENS 10 - 1000 LUMENS	S80 - 80+ CRI ¹ H90 - 90+ CRI H97 - 97+ CRI ¹	27K - 2700K 30K - 3000K 35K - 3500K 40K - 4000K	30D - 30° 45D - 45° 65D - 65°	UNV - 120/277V 120 - 120V 347 - 347V ²

DRIVER	FLANGE TYPE	GIMBAL FINISH	HOUSING INTERIOR
DIM - 0-10V (100-1%) LE - PHASE DIM ³ (TRIAC/ELV, 100-1%) DO1 - 0-10V (100-0.1%) DALI - DALI (100-1%) ⁴ DHL2 - LUTRON HI-LUME (1% ECOSYSTEM) DMX - DMX (100-0%)	WT - WHITE TRIM ST - SILVER TRIM BT - BLACK TRIM XTR - TRIMLESS (MUD-IN DRYWALL)	NG - NATURAL ALUMINUM BG - BLACK GIMBAL WG - WHITE GIMBAL	BK - BLACK

HOUSING TYPE	OPTIONS
SH - SHALLOW HOUSING (IC RATED)	SF - SOFTENING LENS * HXB - BLACK HEXCELL LOUVER * CP - CHICAGO PLENUM EMR - EMERGENCY BATTERY (REMOTE) ⁵

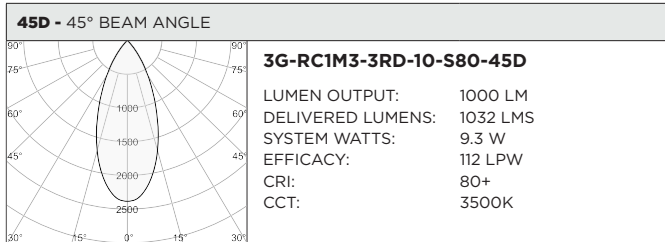
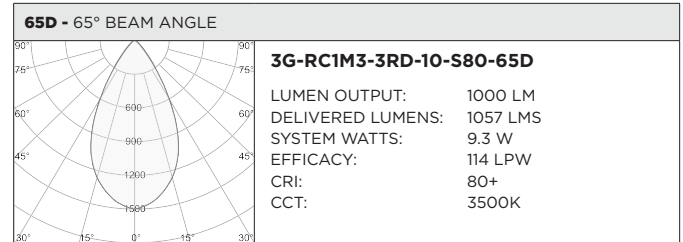
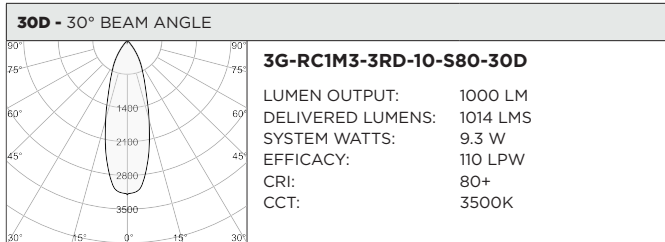
*Maximum 1 optical accessory

¹ S80 not available in 27K. H97 available in 30K and 35K as standard
² 347 available in "DIM" 0-10V only (100-1%)
³ Phase dimming options available in 120V only
⁴ DALI-2 (Type 6) provided as standard. Please consult factory for DALI (Type 8) options
⁵ Emergency battery installed remotely by others. Not accessible through the inside of the fixture

BASED ON 65° BEAM ANGLE AND 3500K SOURCE

LUMEN OUTPUT	80+ CRI			90+ CRI			97+ CRI		
	DELIVERED LUMENS	SYSTEM WATTS	EFFICACY (LPW)	DELIVERED LUMENS	SYSTEM WATTS	EFFICACY (LPW)	DELIVERED LUMENS	SYSTEM WATTS	EFFICACY (LPW)
700LMs	729	6.5	112	642	6.5	99	598	6.5	92
1000LMs	1057	9.3	114	930	9.25	101	866	9.25	94

LUMEN OUTPUT MULTIPLIER: 27K=0.94, 30K=0.97, 35K=1.00, 40K=1.01



HOUSING

New construction shallow housing is IC rated
 Housing fabricated in cold rolled steel. Standard black powder coated finish
 Maximum ceiling thickness of 1". Consult factory for modifications
 Housings are rated for #12 AWG, (4 in, 4 out), 90°C conductors and through branch wiring

TRIM

Machined aluminum trim flange with matte powder coated finish and minimal 0.400" overlap

TRIMLESS

Mudding flange with integral aluminum blocking support
 Machined aluminum insert with seamless ceiling integration

ADJUSTABILITY

Solid, machined aluminum 30mm double gimbal with dual axis adjustability (45°x 40°)

OPTICS

Regressed, 1.2" LED source for enhanced glare control
 Proprietary, high performance reflectors. Field replaceable
 Available in 30°, 45°, and 65°

WARRANTY

5 Year Warranty on LED and drivers
 Manufacturer 1 Year Warranty for defects in material and workmanship under normal use
 Ambient temperature at fixture should not exceed 25°C

ELECTRICAL

Standard 0-10V, constant current drivers with 100-1% dimming range and >0.9 power factor
 Standard 120/277V universal voltage drivers. Optional 347V, 0-10V drivers
 120V Forward Phase/Reverse Phase driver option with 100-1% dimming range
 eldoLED 0-10V driver option available with 100-0.01% dimming range
 eldoLED DALI and Lutron EcoSystem driver options available with 100-1% dimming range
 DMX driver option available with 100-0% dimming range
 All drivers are integral and easily accessible through fixture aperture

LED SYSTEM

Citizen LED module (field replaceable)
 Color consistency <2 SDCM
 Standard (80+ CRI). Optional (90+ and 97+ CRI)
 Available in 27K, 30K, 35K, and 40K
 L90 >50,000 hours
 5 Year Warranty

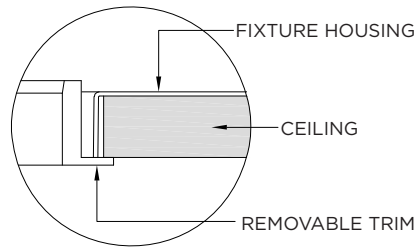
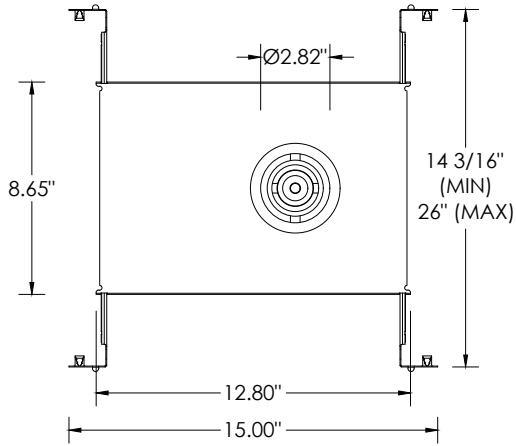
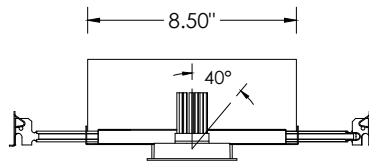
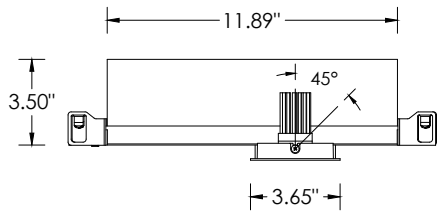
MOUNTING

Trim fixture designed for use in drywall, wood, acoustic, and other architectural ceilings
 Trimless fixture designed for use in drywall, mud-in ceiling applications
 Recommended ceiling cut-out for all housing options (3 13/16" diameter)
 New construction, IC rated shallow housings ships with bar hangers (14" to 26" extension)

LISTING

ETL listed and conforms to UL1598 standard. Certified to CSA22.2 No.250.0.
 Rated for indoor dry or damp locations

TRIM HOUSING OPTIONS



TRIMLESS HOUSING OPTIONS

