

# 3G LIGHTING

## 3G-PDL33SM3

3.3" MICRO MADISON PENDANT  
7" AND 11" HEIGHT

3.3" high performance adjustable Micro Madison Pendants  
1.2" Regressed LED source with enhanced glare control  
Companion to 3G's Madison product family  
Machined aluminum trim features 3G's Micro Madison double gimbal  
Extruded aluminum housing with powder coated finish  
Lumen range up to 1000lm (80+, 90+, and 97+ CRI options)  
1% dimming standard with integral driver options



<b>PROJECT:</b>		<b>TYPE:</b>	
<b>CATALOG#:</b>		<b>DATE:</b>	<b>QTY:</b>

CAT. NO	FIXTURE HEIGHT	LUMEN OUTPUT	CRI	COLOR TEMP	BEAM ANGLE
<b>3G-PDL33SM3</b>	<b>7H</b> - 7" HEIGHT <b>11H</b> - 11" HEIGHT	<b>07</b> - 700 LUMENS * <b>10</b> - 1000 LUMENS	<b>S80</b> - 80+ CRI <sup>1</sup> <b>H90</b> - 90+ CRI <b>H97</b> - 97+ CRI <sup>1</sup>	<b>27K</b> - 2700K <b>30K</b> - 3000K <b>35K</b> - 3500K <b>40K</b> - 4000K	<b>30D</b> - 30° <b>45D</b> - 45° <b>65D</b> - 65°

\*700 lumens not available in 7H fixture height

VOLTAGE	DRIVER	HOUSING FINISH	GIMBAL FINISH
<b>UNV</b> - 120/277V <b>120</b> - 120V	<b>DIM</b> - 0-10V (100-1%) <b>LE</b> - PHASE DIM <sup>2</sup> (TRIAC/ELV, 100-1%)	<b>WH</b> - WHITE <b>BK</b> - BLACK <b>SV</b> - SILVER <b>CF</b> - CUSTOM RAL COLOR	<b>NG</b> - NATURAL ALUMINUM <b>BG</b> - BLACK <b>WG</b> - WHITE

CANOPY	SUSPENSION TYPE	SUSPENSION LENGTH	OPTIONS
<b>WCN</b> - WHITE (STANDARD) <b>BCN</b> - BLACK <b>SCN</b> - SILVER <b>CFW</b> - WHITE CONDUIT FEED CANOPY <b>CFB</b> - BLACK CONDUIT FEED CANOPY <b>CFS</b> - SILVER CONDUIT FEED CANOPY	<b>WC</b> - WHITE CABLE <b>BC</b> - BLACK CABLE <b>RSW</b> - WHITE RIGID STEM <b>RSB</b> - BLACK RIGID STEM <b>RSS</b> - SILVER RIGID STEM <b>RSC</b> - CUSTOM RAL STEM	<b>C60</b> - 60" CABLE <b>C120</b> - 120" CABLE <b>S48</b> - 48" STEM <b>S96</b> - 96" STEM	<b>SF</b> - SOFTENING LENS * <b>HXB</b> - BLACK HEXCELL LOUVER *

All suspension options are field cuttable

\*Maximum 1 optical accessory

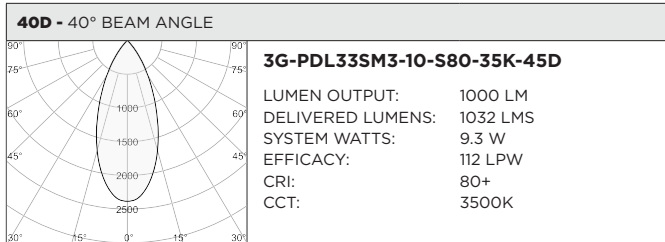
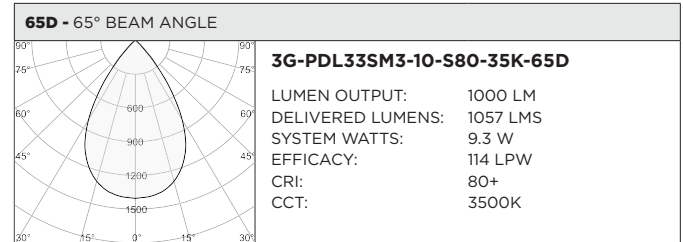
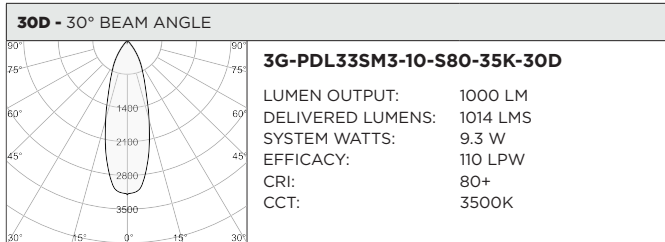
<sup>1</sup> S80 not available in 27K. H97 available in 30K and 35K as standard

<sup>2</sup> Phase dimming options available in 120V only

BASED ON 65° BEAM ANGLE AND 3500K SOURCE

LUMEN OUTPUT	80+ CRI			90+ CRI			97+ CRI		
	DELIVERED LUMENS	SYSTEM WATTS	EFFICACY (LPW)	DELIVERED LUMENS	SYSTEM WATTS	EFFICACY (LPW)	DELIVERED LUMENS	SYSTEM WATTS	EFFICACY (LPW)
<b>700LMs</b>	729	6.5	112	642	6.5	99	598	6.5	92
<b>1000LMs</b>	1057	9.3	114	930	9.25	101	866	9.25	94

LUMEN OUTPUT MULTIPLIER: 27K=0.94, 30K=0.97, 35K=1.00, 40K=1.01



**HOUSING**

Extruded aluminum housing with powder coated finish

**BEVELED INSERT**

3.3" machined aluminum trim insert feature 3G's Micro Madison double gimbal  
 Solid aluminum 30mm double gimbal with dual axis adjustability (35°x35°)

**OPTICS**

Regressed LED source for enhanced glare control  
 Proprietary, high performance reflectors. Field replaceable  
 Available in 30°, 45°, and 65°

**MOUNTING**

1/2" diameter rigid stem option with sloped ceiling adapter (field cuttable)  
 Standard, 18-gauge, 5 conductor single circuit braided power feed (black and white finish)  
 All hardware included for mounting to 4" octagonal junction box  
 Canopy provided in white finish as standard  
 Conduit feed cut-out canopy option designed to mount to 4" octagonal junction box

**WARRANTY**

5 Year Warranty on LED and drivers  
 Manufacturer 1 Year Warranty for defects in material and workmanship under normal use  
 Ambient temperature at fixture should not exceed 25°C

**ELECTRICAL**

Standard 0-10V, constant current drivers with 100-1% dimming range and >0.9 power factor  
 Standard 120/277V universal voltage drivers  
 120V Forward Phase/Reverse Phase option with 100-1% dimming range  
 All drivers are integral and easily accessible through fixture aperture  
 7" models include 0-10V drivers that operate only with dimmers that sink current (not designed for source current)  
 Compatible 0-10V dimmers for all 7" height models listed below:  
**Lutron** NFTV, **Lutron** DDTV, **Lutron** DVSTV, **Lutron** VIVE RMJS-8TN, **Leviton** IP710-DLZ, **Philips** SR1200ZTUNV, **Cooper** SF10P

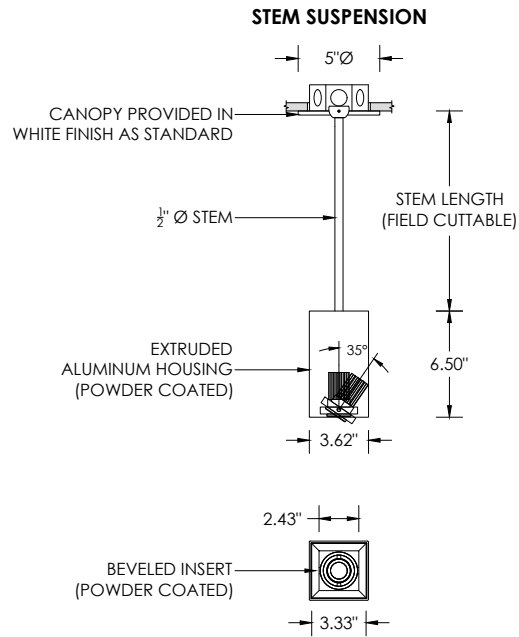
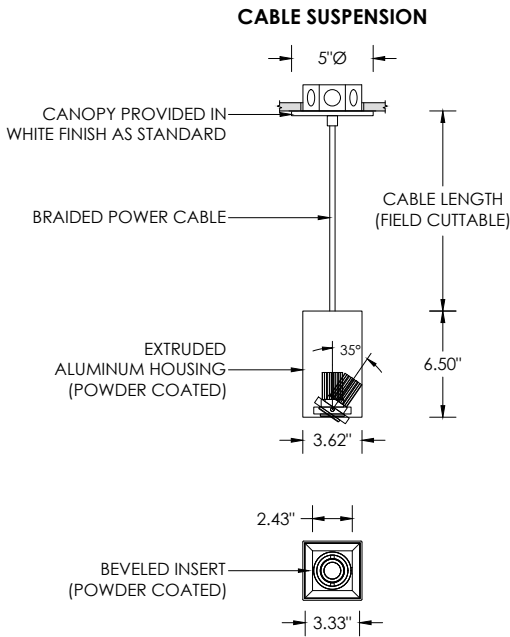
**LED SYSTEM**

Citizen LED module (field replaceable)  
 Color consistency <2 SDCM  
 Standard (80+ CRI). Optional (90+ and 97+ CRI)  
 Available in 27K, 30K, 35K, and 40K  
 L90 >50,000 hours  
 5 Year Warranty

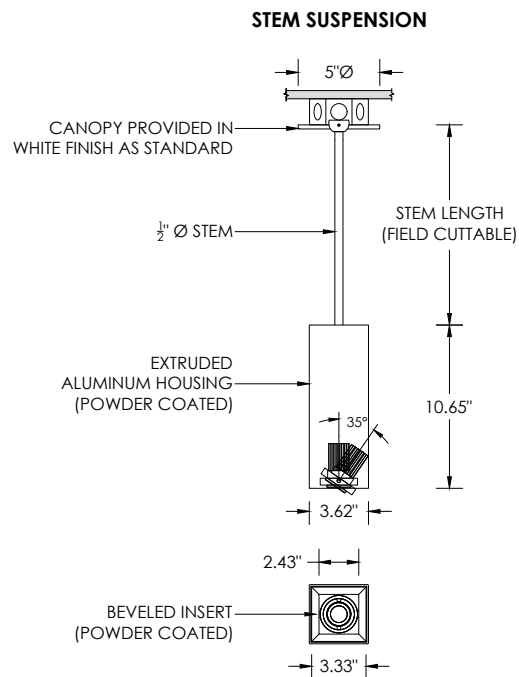
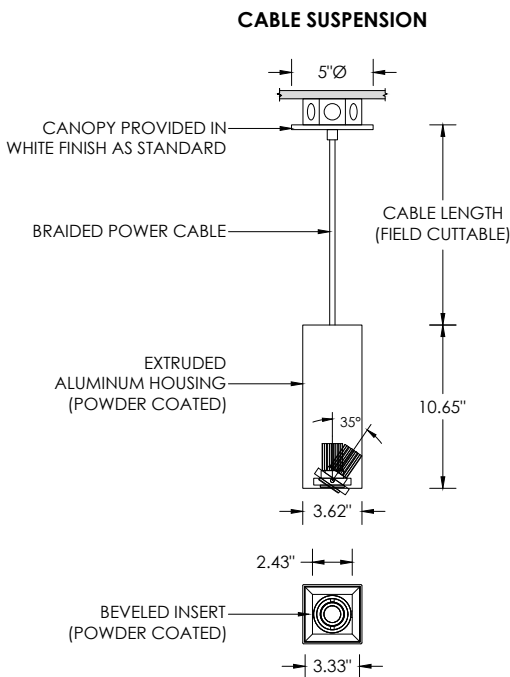
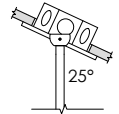
**LISTING**

ETL listed and conforms to UL1598 standard. Certified to CSA22.2 No.250.0.  
 Rated for indoor dry or damp locations

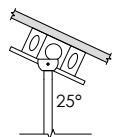
**RECESSED 4" OCTAGONAL JUNCTION BOX BY OTHERS**  
STANDARD CANOPY MOUNT



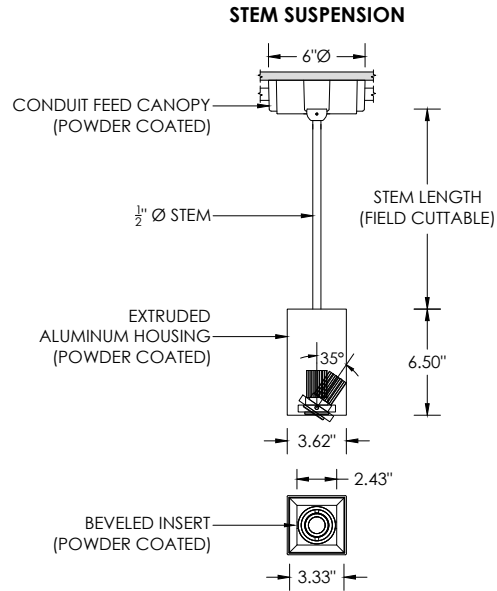
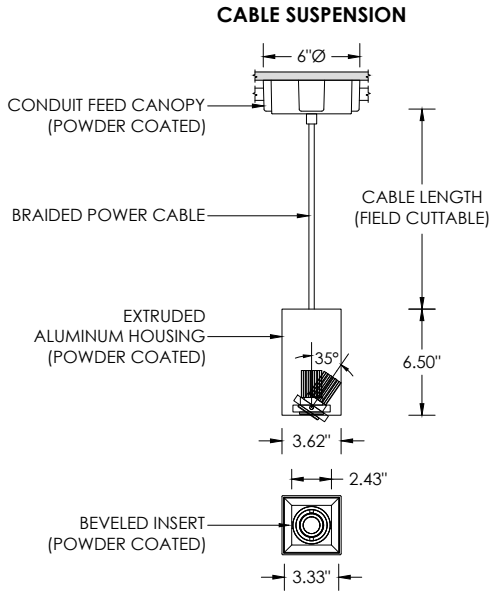
**SUITABLE FOR SLOPED CEILING**



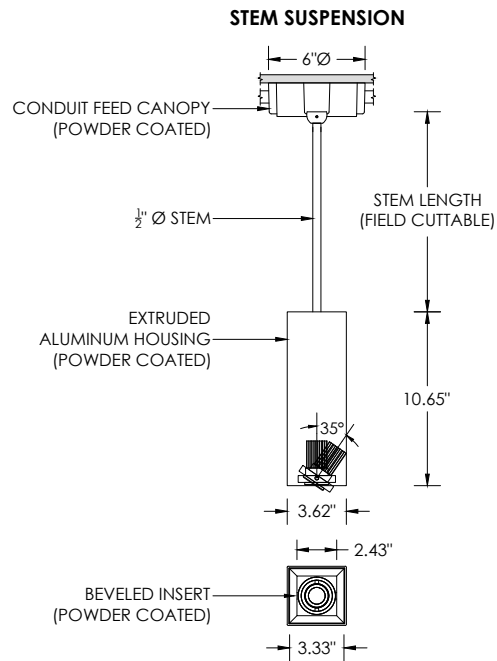
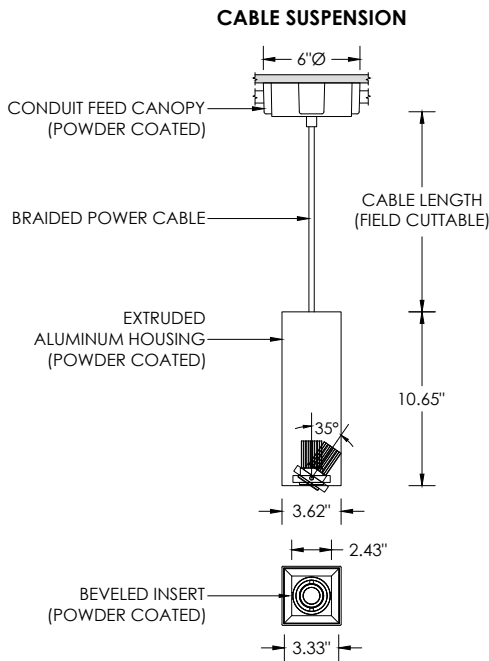
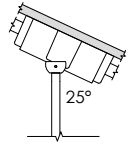
**SUITABLE FOR SLOPED CEILING**



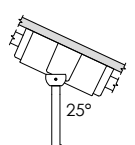
**SURFACE 4" OCTAGONAL X 1.5" DEEP JUNCTION BOX BY OTHERS**  
CONDUIT FEED CANOPY MOUNT (CFX OPTION)



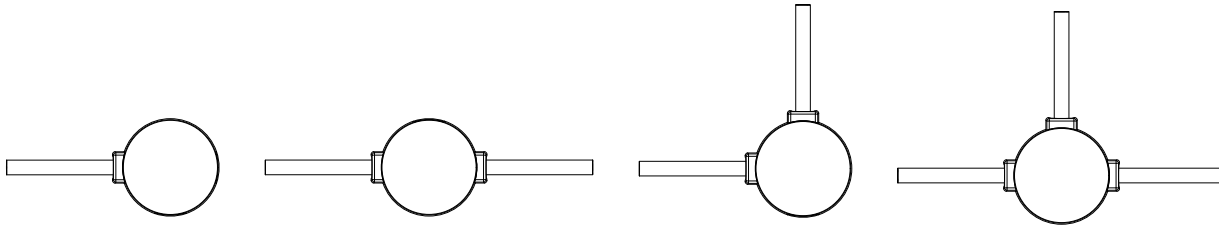
**SUITABLE FOR SLOPED CEILING**



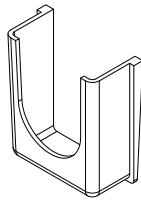
**SUITABLE FOR SLOPED CEILING**



**CONDUIT FEED CANOPY MOUNTING OPTIONS**



CONDUIT COVER  
3 PROVIDED WITH EACH  
CONDUIT FEED CANOPY



BLANK  
2 PROVIDED WITH EACH  
CONDUIT FEED CANOPY

