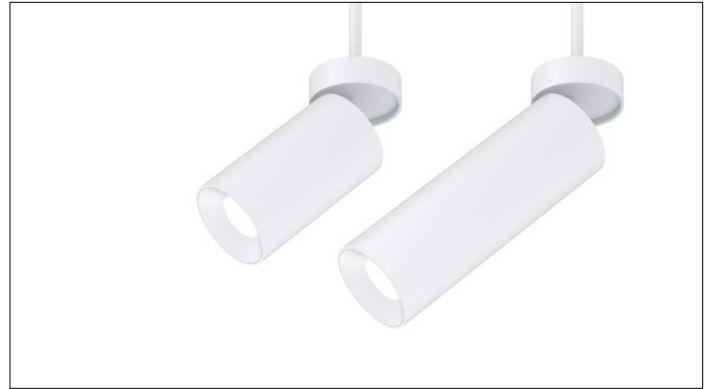


3G LIGHTING

3G-PDL33RA

3.3" ADJUSTABLE DOWNLIGHT
CYLINDER 7" AND 11" HEIGHT

3.3" diameter, adjustable high performance cylinders
Adjustable housing with 0-90° tilt and 360° rotation
Companion to 3G-DL33R series downlight family
Extruded aluminum housing with powder coated finish
Twist and lock construction and no visible hardware
Regressed LED source for enhanced glare control
Lumen range up to 2200lm (80+, 90+, and 97+ CRI options)



PROJECT:		TYPE:	
CATALOG#:		DATE:	QTY:

CAT. NO	FIXTURE HEIGHT	LUMEN OUTPUT	CRI	COLOR TEMP	BEAM ANGLE
3G-PDL33RA	7H - 7" HEIGHT *	10 - 1000 LUMENS	S80 - 80+ CRI ¹	27K - 2700K	20D - 20°
	11H - 11" HEIGHT	15 - 1500 LUMENS	H90 - 90+ CRI	30K - 3000K	40D - 40°
		22 - 2200 LUMENS	H97 - 97+ CRI ¹	35K - 3500K 40K - 4000K	60D - 60° 90D - 90°
*7H available up to 1500lm with integral driver (DIM & LE options). Select remote driver option for higher lumen outputs					

VOLTAGE	DRIVER	HOUSING FINISH	INSERT FINISH
UNV - 120/277V 120 - 120V 347 - 347V ²	DIM - 0-10V (100-1%) LE - PHASE DIM ³ (TRIAC/ELV, 100-1%) D01 - 0-10V (100-0.1%) DALI - DALI (100-1%) ⁴ DHL2 - LUTRON HI-LUME (1% ECOSYSTEM) DMX - DMX (100-0%) RDIM - REMOTE 0-10V (100-1%) RLE - REMOTE PHASE (TRIAC/ELV, 100-1%) Remote drivers supplied with enclosure	WH - WHITE BK - BLACK SV - SILVER	WI - WHITE BI - BLACK SI - SILVER

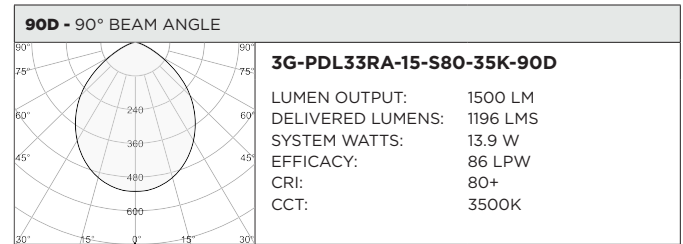
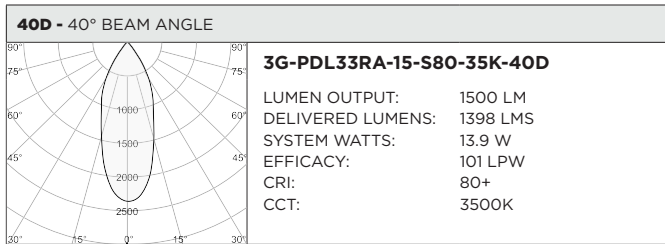
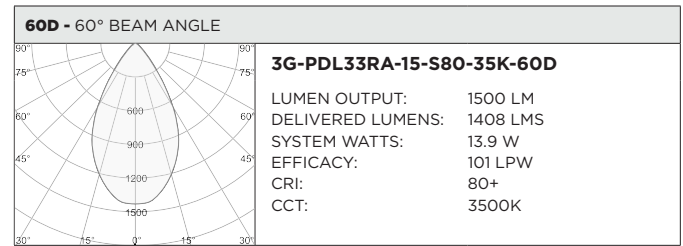
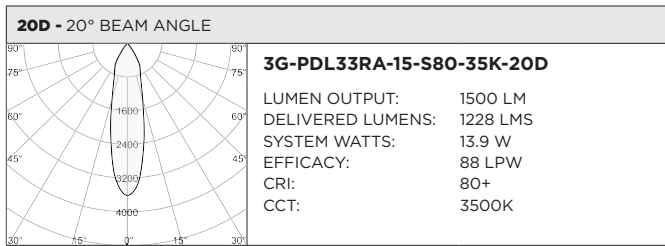
CANOPY	SUSPENSION TYPE	SUSPENSION LENGTH	OPTIONS
WCN - WHITE (STANDARD) BCN - BLACK SCN - SILVER CFW - WHITE CONDUIT FEED CANOPY CFB - BLACK CONDUIT FEED CANOPY CFS - SILVER CONDUIT FEED CANOPY	RSW - WHITE RIGID STEM RSB - BLACK RIGID STEM RSS - SILVER RIGID STEM	S48 - 48" STEM S96 - 96" STEM All suspension options are field cuttable	LS - LINEAR SPREAD LENS SB - SANDBLASTED LENS SF - SOFTENING LENS (SUPPLIED STANDARD) EMR - EMERGENCY BATTERY ⁵ (REMOTE) Maximum 1 optical accessory Not available with 90D reflector option

¹ S80 not available in 27K. H97 available in 30K and 35K as standard
² 347 available in "DIM" 0-10V and "RDIM" 0-10V only (100-1%). Not available with 7H model
³ Phase dimming options available in 120V only
⁴ DALI-2 (Type 6) provided as standard. Consult factory for DALI Type 8 option
⁵ Emergency battery installed remotely by others. Not accessible through the inside of the fixture

BASED ON 60° BEAM ANGLE AND 3500K SOURCE

LUMEN OUTPUT	80+ CRI			90+ CRI			97+ CRI		
	DELIVERED LUMENS	SYSTEM WATTS	EFFICACY (LPW)	DELIVERED LUMENS	SYSTEM WATTS	EFFICACY (LPW)	DELIVERED LUMENS	SYSTEM WATTS	EFFICACY (LPW)
1000LMs	1080	10.3	105	950	10.3	92	886	10.3	86
1500LMs	1408	13.9	101	1239	13.9	89	1155	13.9	83
2200LMs	2132	21.9	97	1876	21.9	86	1748	21.9	80

LUMEN OUTPUT MULTIPLIER: 27K=0.94, 30K=0.97, 35K=1.00, 40K=1.01



HOUSING

Extruded aluminum housing with powder coated finish
 Twist and lock construction with no visible hardware
 Adjustable housing with 0-90° tilt and 360° rotation features proprietary swivel mechanism

BEVELED INSERT

3.3" aperture with regressed LED source for enhanced glare control
 Cast aluminum insert with matte powder coated finish

OPTICS

Proprietary anodized, aluminum reflectors are field replaceable (20° reflector not interchangeable)
 Available in 20°, 40°, 60° and 90°

MOUNTING

1/2" diameter rigid stem option with sloped ceiling adapter (field cuttable)
 All hardware included for mounting to 4" octagonal junction box
 Conduit feed cut-out canopy option designed to mount to 4" octagonal junction box
 Twist and lock mechanism

WARRANTY

5 Year Warranty on LED and drivers
 Manufacturer 1 Year Warranty for defects in material and workmanship under normal use
 Ambient temperature at fixture should not exceed 25°C

ELECTRICAL

Standard 0-10V, constant current drivers with 100-1% dimming range and >0.9 power factor
 120V Forward Phase/Reverse Phase driver option with 100-1% dimming range
 Standard 120/277V universal voltage with several driver options
 All drivers are integral and easily accessible through luminaire aperture
 Optional remote emergency battery installed by others. Not accessible through aperture. 10W output for 90 minutes (+/- 1000lm at 80+ CRI)
 7" models include 0-10V drivers that operate only with dimmers that sink current (not designed for source current)
 Compatible 0-10V dimmers for all 7" height models listed below:
Lutron NFTV, **Lutron** DDTV , **Lutron** DVSTV, **Lutron** VIVE RMJS-8TN, **Leviton** IP710-DLZ, **Philips** SR1200ZTUNV, **Cooper** SF10P

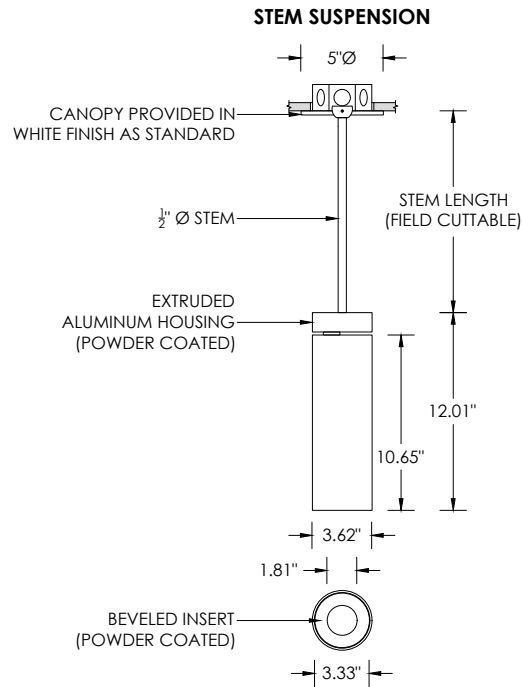
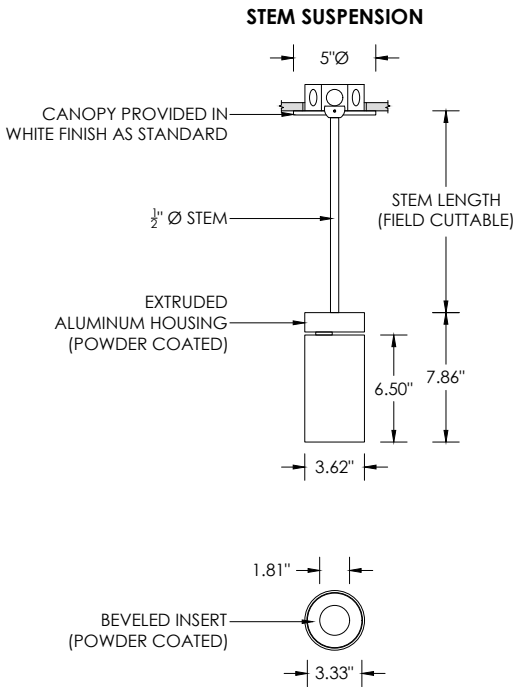
LED SYSTEM

Citizen LED module (field replaceable)
 Color consistency <2 SDCM
 Standard (80+ CRI). Optional (90+ and 97+ CRI)
 Available in 27K, 30K, 35K, and 40K
 L90 >50,000 hours
 5 Year Warranty

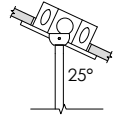
LISTING

ETL listed and conforms to UL1598 standard. Certified to CSA22.2 No.250.0.
 Rated for indoor dry or damp locations

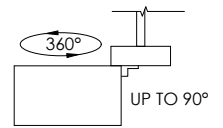
RECESSED 4" OCTAGONAL JUNCTION BOX BY OTHERS
STANDARD CANOPY MOUNT



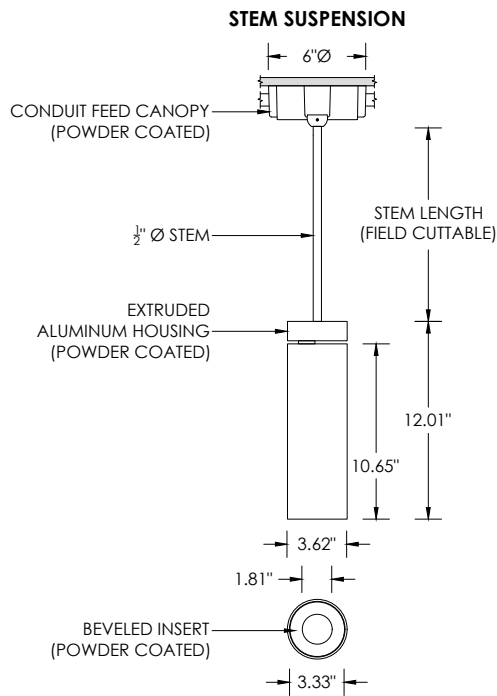
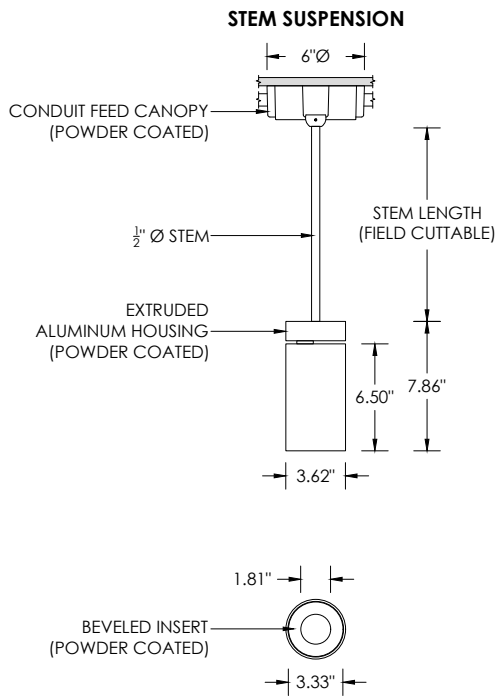
SUITABLE FOR SLOPED CEILING



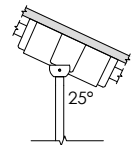
ADJUSTABILITY



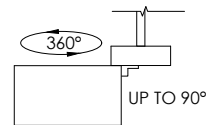
SURFACE 4" OCTAGONAL X 1.5" DEEP JUNCTION BOX BY OTHERS
CONDUIT FEED CANOPY MOUNT (CFX OPTION)



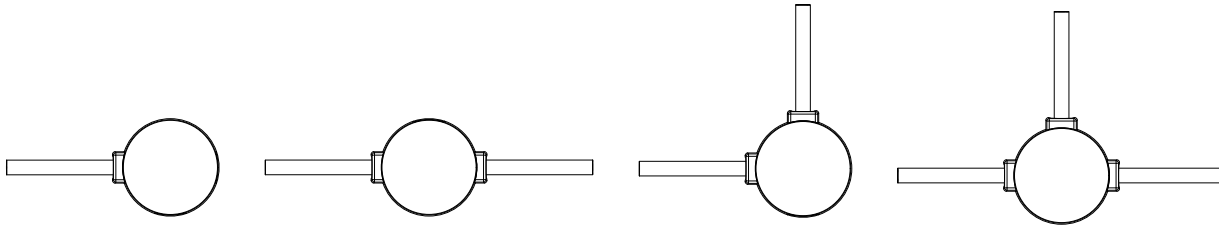
SUITABLE FOR SLOPED CEILING



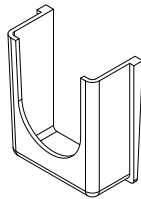
ADJUSTABILITY



CONDUIT FEED CANOPY MOUNTING OPTIONS



CONDUIT COVER
3 PROVIDED WITH EACH
CONDUIT FEED CANOPY



BLANK
2 PROVIDED WITH EACH
CONDUIT FEED CANOPY

