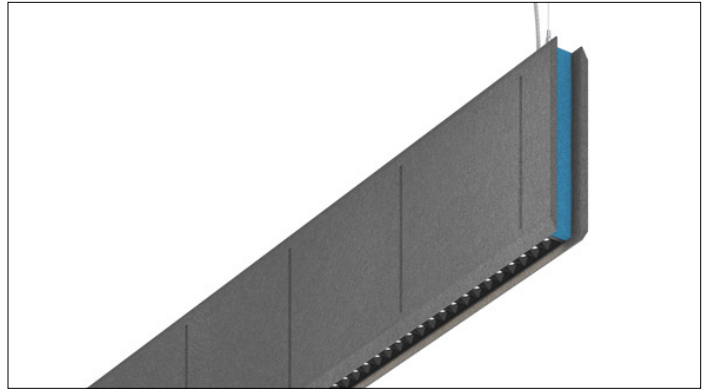




3G-1PZA-D

1.5" ACOUSTIC PENDANT
ZOEI DIRECT ONLY



Acoustic body and edge fabricated in 1/2" thick acoustic felt with 20 color options
1.5" aperture with one piece extruded aluminum housing
Available in 4', 5', 6', and 8' lengths with 12" or 16" height options
High performance, mini downlights delivering up to 1250 lumens per foot
Features matte black or matte white multi-faceted louvers
LED source with enhanced glare control, UGR <16

PROJECT:		TYPE:	
CATALOG#:		DATE:	QTY:

CAT. NO	FIXTURE HEIGHT	LUMEN OUTPUT	CRI	COLOR TEMP	BEAM ANGLE	
3G-1PZA-D	12H - 12" HEIGHT	D250 - 250LM/FT	H90 - 90+ CRI	27K - 2700K	15D - 15°	
	16H - 16" HEIGHT	D500 - 500LM/FT		30K - 3000K		35D - 35°
		D750 - 750LM/FT		35K - 3500K		55D - 55°
		D1000 - 1000LM/FT		40K - 4000K		
		D1250 - 1250LM/FT				

VOLTAGE	DRIVER	HOUSING & LOUVER FINISH	ACOUSTIC COLOR OPTIONS
UNV - 120/277V	DIM - 0-10V (100-1%) D01 - 0-10V (100-0.1%) DALI - DALI (100-1%) ¹ DHL2 - LUTRON HI LUME (1% ECOSYSTEM)	BKV - BLACK HOUSING & BLACK LOUVER WHV - WHITE HOUSING & WHITE LOUVER	1CL - SINGLE COLOR (SAME COLOR FOR BODY AND EDGE) 2CL - DUAL COLOR (DIFFERENT COLORS FOR BODY AND EDGE)

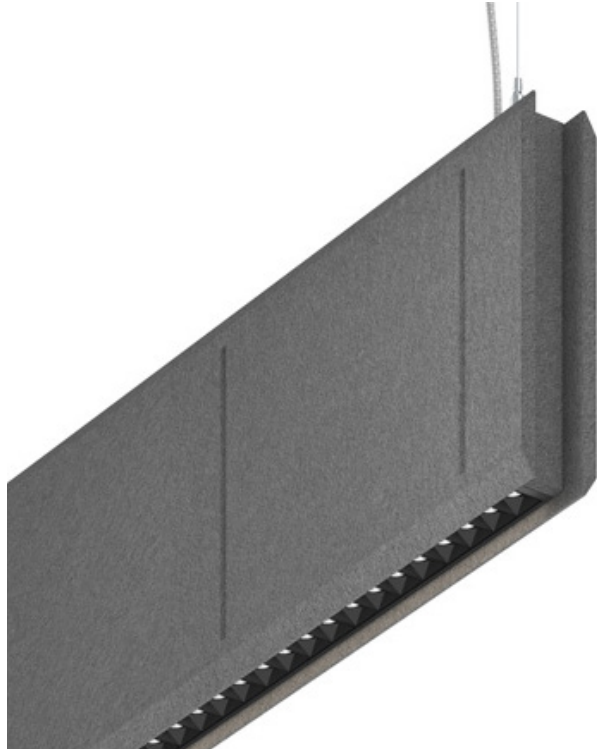
ACOUSTIC BODY	ACOUSTIC EDGE	CABLE LENGTH	RUN TYPE
BXX - (SEE PAGE 2 FOR ALL COLORS)	EXX - (SEE PAGE 2 FOR ALL COLORS) <small>*Option 2CL to be selected with this option</small>	60 - 60" 120 - 120"	S(4') - 4' S(5') - 5' S(6') - 6' S(8') - 8'

¹ DALI-2 (Type 6) provided as standard. Please consult factory for DALI (Type 8) options

SINGLE COLOR OPTION

SPECIFY ONE COLOR FOR THE ACOUSTIC BODY AND EDGE

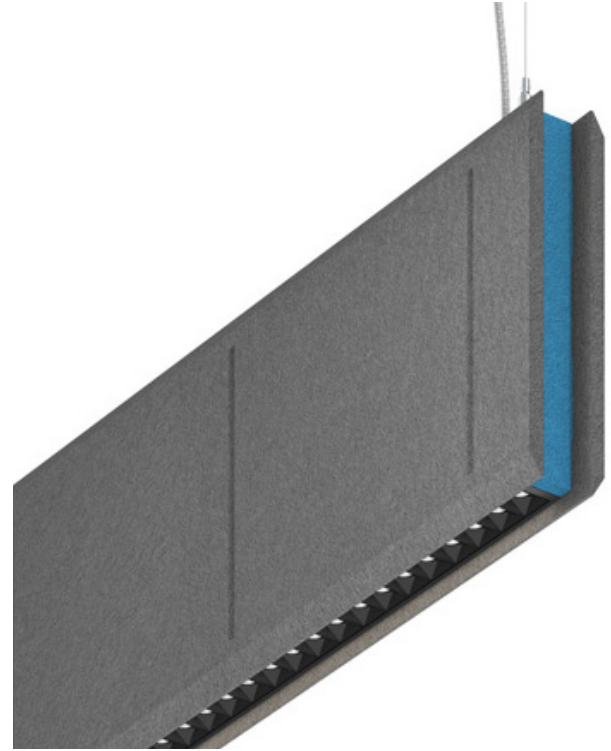
Acoustic Body and Edge shown with "BRG" (Rhino grey)



DUAL COLOR OPTION

SPECIFY TWO DIFFERENT COLORS FOR THE ACOUSTIC BODY AND EDGE

Acoustic Body shown with "BRG" (Rhino grey)
Acoustic Edge shown with "ETU" (Turquoise)



ACOUSTIC BODY COLORS

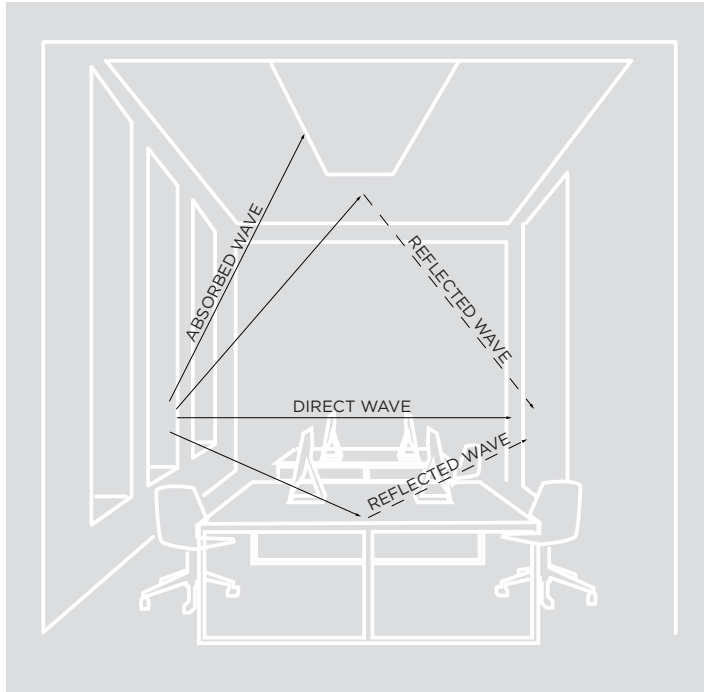


OPTIONAL EDGE COLORS



SOUND WAVE IN A GIVEN SPACE

When a sound wave is emitted from its source, it propels in all directions. The sound carries in a space unless it comes across an obstruction or an absorbing element such as carpeting, or upholstery. Harder materials will enable sound waves to reverberate in the space for a longer period of time. A sound can be direct like a face to face conversation and it can be reflected back from a hard surface.



REVERBERATION

The persistence of sound after it has been stopped due to multiple reflections from surfaces within a closed space



T60 : REVERBERATION TIME

The time it takes for a sound to decay by 60 dB once the source of sound has stopped. Reverberation time is the basic acoustical property of a room which depends only on its dimensions and the absorptive properties of its surfaces and contents. An acceptable value for class rooms and libraries ranges between 0.5-0.9 seconds. A suitable value for open offices and conference rooms ranges between 0.7 and 1.25 seconds



NRC - NOISE ABSORPTION COEFFICIENT

The Noise Reduction Coefficient is a scalar representation of the amount of sound energy absorbed upon striking a particular surface. an NRC of 0 indicates perfect reflection. an NRC of 1 indicates perfect absorption. Higher number equals better performance.



SABIN

A unit of sound absorption based on one square foot of material. Products with higher Sabin values provide more sound absorption.

SABIN COUNT

The sum total of the absorption coefficients in a room. Stronger NRC values will deliver higher Sabin counts.

ACOUSTIC PERFORMANCE

FIXTURE LENGTH	FIXTURE HEIGHT	SABINS PER OBJECT @ A GIVEN FREQUENCY				
		250hz	500hz	1000hz	2000hz	AVERAGE
4FT	12IN	2.30	4.47	7.29	8.50	5.64
4FT	16IN	3.38	5.74	9.05	10.52	7.17
5FT	12IN	2.88	5.58	9.11	10.62	7.05
5FT	16IN	4.22	7.17	11.31	13.14	8.96
6FT	12IN	3.45	6.70	10.94	12.74	8.46
6FT	16IN	5.06	8.60	13.58	15.77	10.75
8FT	12IN	4.60	8.93	14.58	16.99	11.28
8FT	16IN	6.75	11.47	18.10	21.03	14.34

OPTICS

1" apertures with matte black or matte white multi-faceted louvers
 Regressed LED source for enhanced glare control
 Proprietary polycarbonate multi-faceted reflectors
 Available in 15°, 35° and 55°
 UGR <16

HOUSING

Extruded aluminum housing with 1.5" aperture
 Die cast aluminum endcaps add 1/4" to each end of luminaire
 24-gauge LED reflector with high reflectance white powder coated finish
 Standard polyester powder coated finishes include matte white and black

ACOUSTIC HOUSING

Acoustic body and edge fabricated in 1/2" thick acoustic felt
 Acoustic NRC value up to 0.9 (see tests results for more details)
 Produced with recycled polyester fiber and +/- 60% from recycled water bottles
 Material is 100% recyclable
 0% VOC's
 Fire rating ASTM E-84 Class A / CAN ULC S102

ZONE DIRECT - BASED ON 35°, 90+ CRI AND 3500K SOURCE

FIXTURE TYPE	DELIVERED LUMENS (LM/FT)	SYSTEM WATTS (W/FT)	EFFICACY (LPW)
ZONE DIRECT	250	3.0	85
	500	5.9	86
	750	8.7	89
	1000	11.4	90
	1250	13.9	91

LUMEN OUTPUT MULTIPLIER: 27K=0.93, 30K=0.96, 35K=1.00, 40K=1.02

LED SYSTEM

Osram LED source
 Available in 27K, 30K, 35K, and 40K
 Standard 90+ CRI
 Color consistency < 2 SDCM
 L90 >60,000 hours

ELECTRICAL

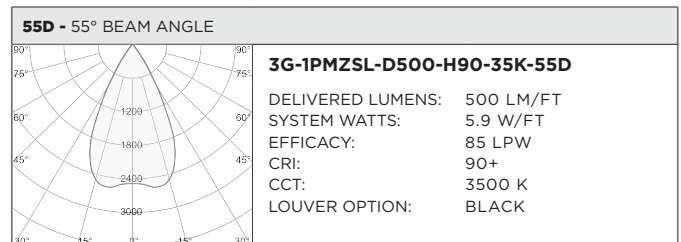
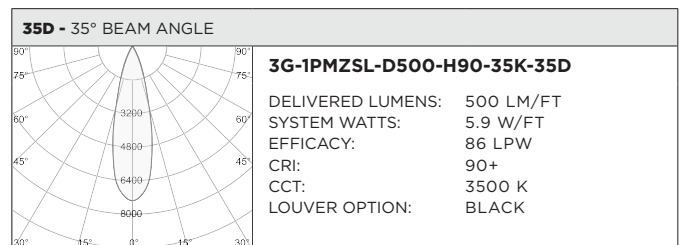
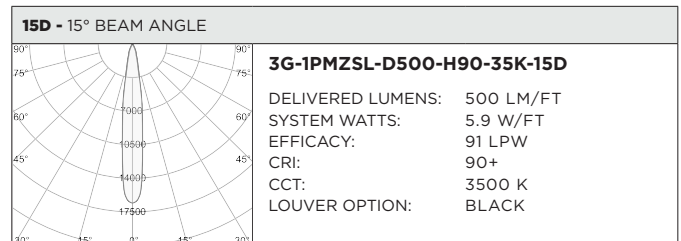
Standard 0-10V, constant current drivers with 100-1% dimming range and >0.9 power factor
 Standard 120/277V universal voltage with several driver options
 All drivers are integral and easily accessible through luminaire aperture

LISTING

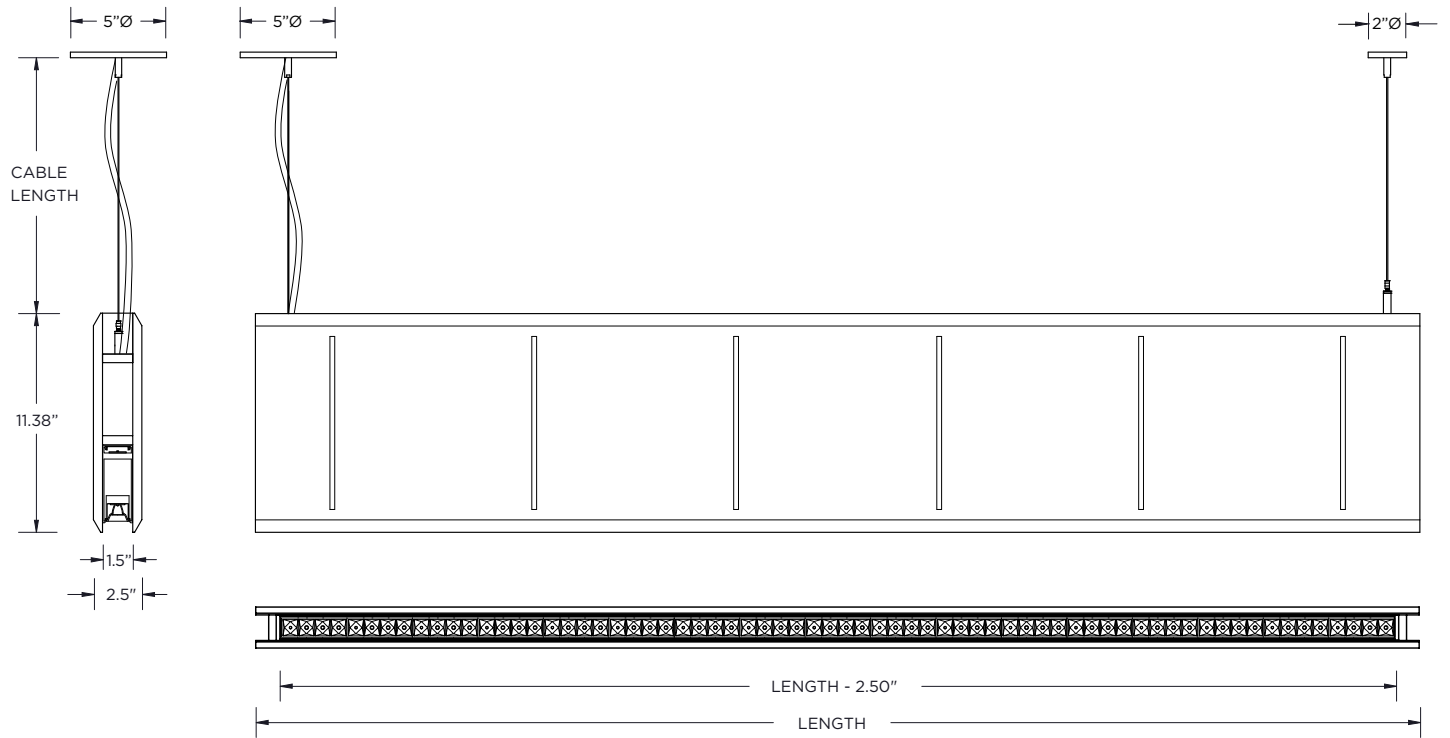
ETL listed and conforms to UL1598 standard. Certified to CSA22.2 NO.250.0. Suitable for dry locations

WARRANTY

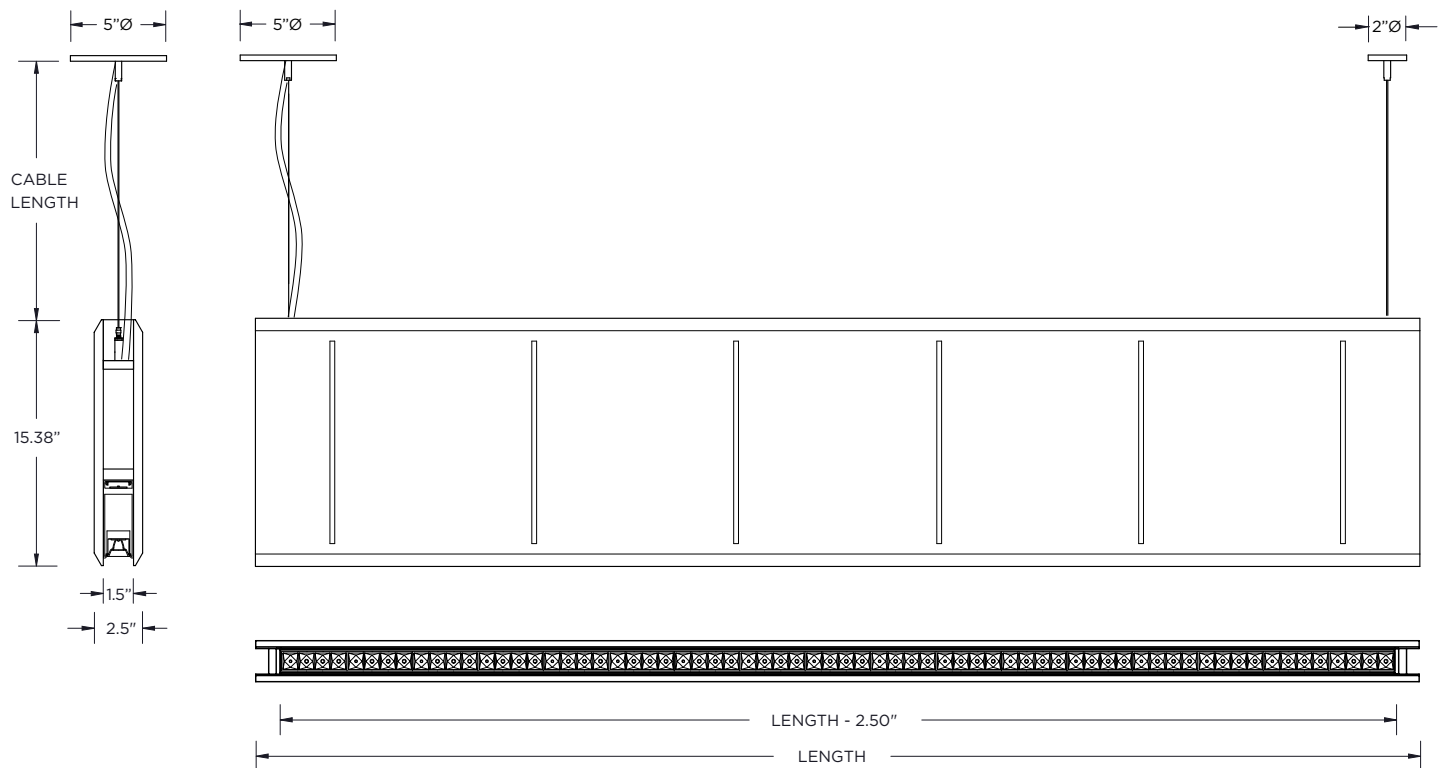
5 Year Warranty on LED and drivers Manufacturer
 1 Year Warranty for defects in material and workmanship under normal use
 Ambient temperature at fixture should not exceed 25°C

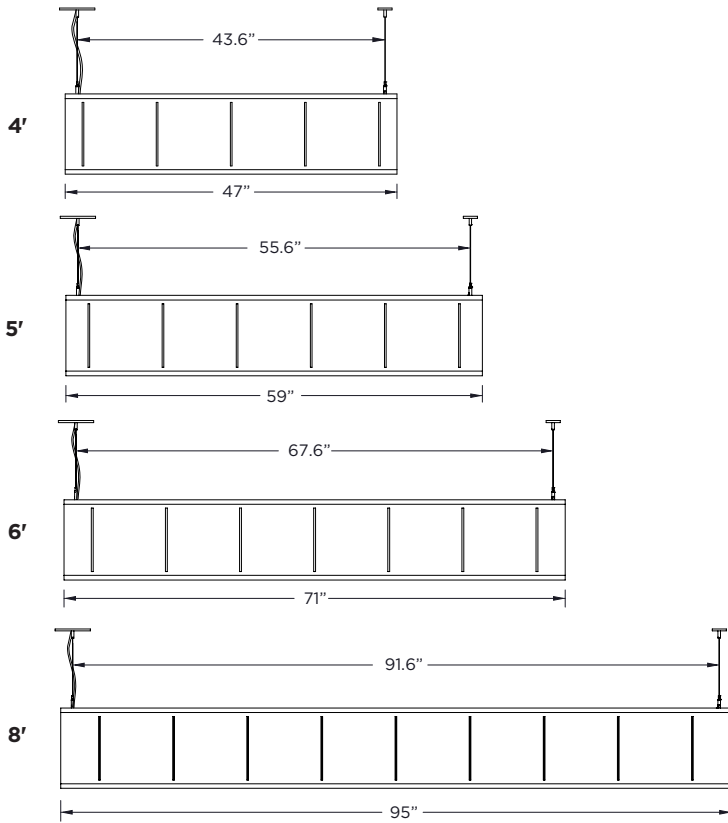


12IN HEIGHT



16IN HEIGHT





MOUNTING DETAILS

Adjustable aircraft cable suspension with locking fasteners (60" length standard)
 All mounting canopies provided in white finish as standard
 Suitable for various architectural ceilings (see mounting details)
 Fixture weight: 3.75 lbs/ft

