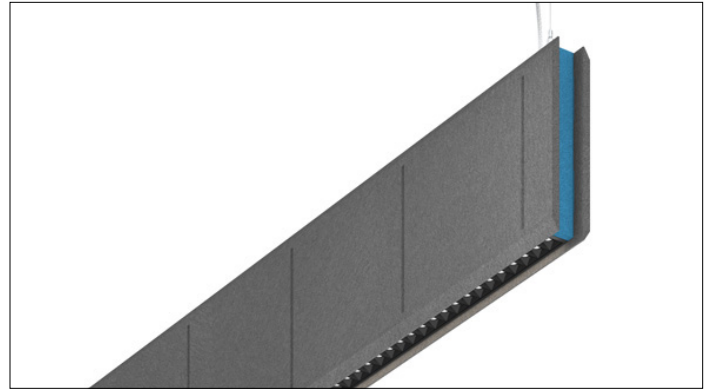


# 3G LIGHTING

## 3G-1PZA-DI

1.5" ACOUSTIC PENDANT  
ZOEI DIRECT/INDIRECT



Acoustic body and edge fabricated in 1/2" thick acoustic felt with 20 color options  
1.5" aperture with one piece extruded aluminum housing  
Available in 4', 5', 6', and 8' lengths with 12" or 16" height options  
High performance, mini downlights delivering up to 1250 lumens per foot  
Features matte black or matte white multi-faceted louvers  
LED source with enhanced glare control, UGR <16  
Indirect LED system with performance up to 130 lumens per watt  
Widespread and Asymmetric optics available

<b>PROJECT:</b>		<b>TYPE:</b>	
<b>CATALOG#:</b>		<b>DATE:</b>	<b>QTY:</b>

CAT. NO	FIXTURE HEIGHT	LUMEN OUTPUT (DIRECT)	SYSTEM CRI	SYSTEM COLOR TEMP	BEAM ANGLE (DIRECT)
3G-1PZA-DI	12H - 12" HEIGHT	D250 - 250LM/FT	H90 - 90+ CRI	27K - 2700K	15D - 15°
	16H - 16" HEIGHT	D500 - 500LM/FT		30K - 3000K	35D - 35°
		D750 - 750LM/FT		35K - 3500K	55D - 55°
		D1000 - 1000LM/FT		40K - 4000K	
		D1250 - 1250LM/FT			

LUMEN OUTPUT (INDIRECT)	LENS OPTION (INDIRECT)	VOLTAGE	DRIVER
L250 - 250LM/FT L500 - 500LM/FT L750 - 750LM/FT	FL - FLUSH LENS WSO - WIDESPREAD OPTIC ASY - ASYMMETRIC OPTIC	UNV - 120/277V	DIM - 0-10V (100-1%) DO1 - 0-10V (100-0.1%) DALI - DALI (100-1%) <sup>1</sup> DHL2 - LUTRON HI-LUME (1% ECOSYSTEM)

HOUSING & LOUVER FINISH	ACOUSTIC COLOR OPTIONS	ACOUSTIC BODY	ACOUSTIC EDGE
BKV - BLACK HOUSING & BLACK LOUVER WHV - WHITE HOUSING & WHITE LOUVER	1CL - SINGLE COLOR (SAME COLOR FOR BODY AND EDGE) 2CL - DUAL COLOR (DIFFERENT COLORS FOR BODY AND EDGE)	BXX - (SEE PAGE 2 FOR ALL COLORS)	EXX - (SEE PAGE 2 FOR ALL COLORS)  <small>*Option 2CL to be selected with this option</small>

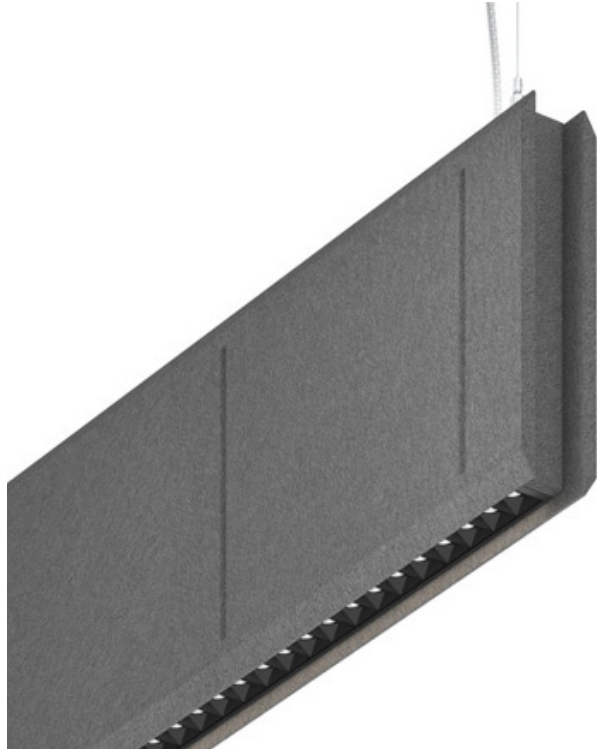
CABLE LENGTH	CIRCUITING	RUN TYPE
60 - 60" 120 - 120"	1C - 1 CIRCUIT 2C - 2 CIRCUITS (SEPARATE DIRECT & INDIRECT)	S(4') - 4' S(5') - 5' S(6') - 6' S(8') - 8'

<sup>1</sup> DALI-2 (Type 6) provided as standard. Please consult factory for DALI (Type 8) options

**SINGLE COLOR OPTION**

**SPECIFY ONE COLOR FOR THE ACOUSTIC BODY AND EDGE**

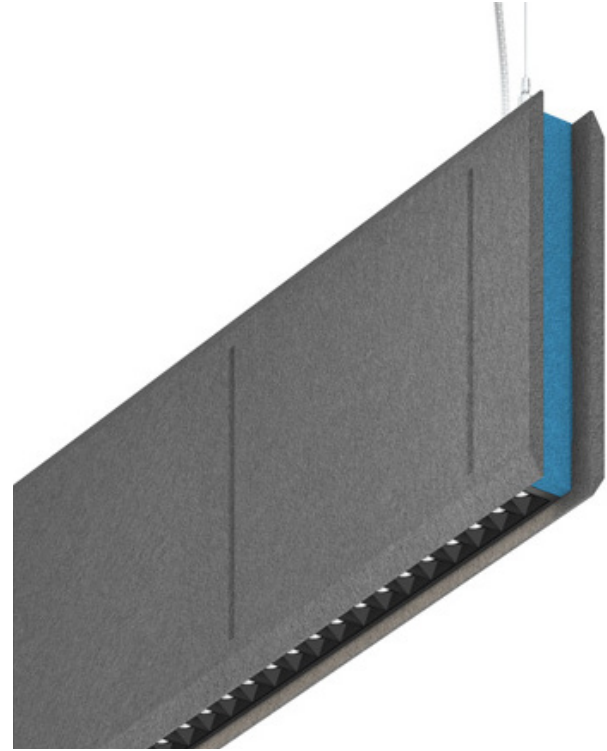
Acoustic Body and Edge shown with "BRG" (Rhino grey)



**DUAL COLOR OPTION**

**SPECIFY TWO DIFFERENT COLORS FOR THE ACOUSTIC BODY AND EDGE**

Acoustic Body shown with "BRG" (Rhino grey)  
Acoustic Edge shown with "ETU" (Turquoise)



**ACOUSTIC BODY COLORS**

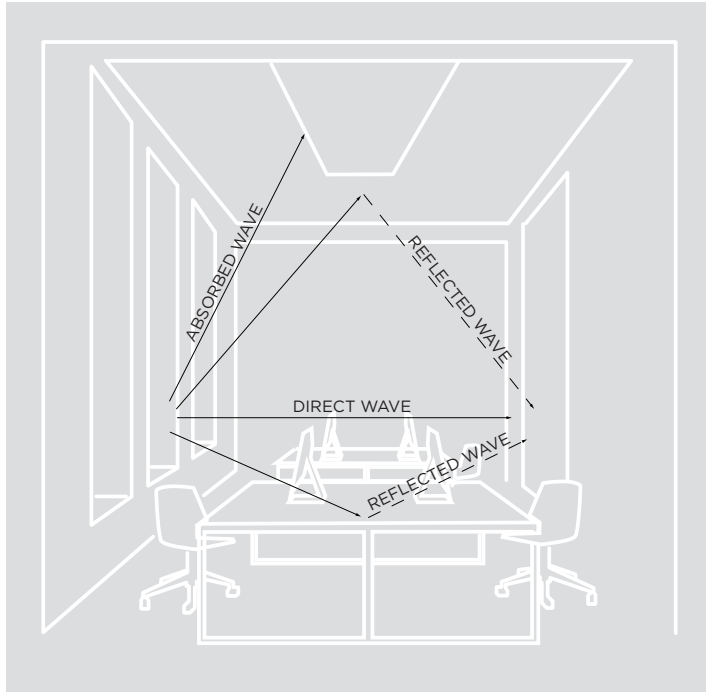
<b>BSG</b> Steel gray	<b>BRG</b> Rhino gray	<b>BCH</b> Charcoal	<b>BBK</b> Black	<b>BSW</b> Snow white	<b>BBE</b> Beige	<b>BLM</b> Light marble	<b>BAG</b> Ash gray	<b>BDM</b> Dark marble	<b>BFG</b> Forest green
<b>BAP</b> Apple green	<b>BNG</b> Neon green	<b>BEG</b> Emerald green	<b>BYE</b> Yellow	<b>BOR</b> Orange	<b>BRE</b> Red	<b>BGP</b> Grape prune	<b>BAB</b> Admiral blue	<b>BSB</b> Sky blue	<b>BTU</b> Turquoise

**OPTIONAL EDGE COLORS**

<b>ERG</b> Rhino gray	<b>EBK</b> Black	<b>ESW</b> Snow white	<b>EAG</b> Ash gray	<b>EAP</b> Apple Green	<b>EYE</b> Yellow	<b>EOR</b> Orange	<b>ERE</b> Red	<b>EAB</b> Admiral blue	<b>ETU</b> Turquoise

**SOUND WAVE IN A GIVEN SPACE**

When a sound wave is emitted from its source, it propels in all directions. The sound carries in a space unless it comes across an obstruction or an absorbing element such as carpeting, or upholstery. Harder materials will enable sound waves to reverberate in the space for a longer period of time. A sound can be direct like a face to face conversation and it can be reflected back from a hard surface.



**REVERBERATION**

The persistence of sound after it has been stopped due to multiple reflections from surfaces within a closed space



**T60 : REVERBERATION TIME**

The time it takes for a sound to decay by 60 dB once the source of sound has stopped. Reverberation time is the basic acoustical property of a room which depends only on its dimensions and the absorptive properties of its surfaces and contents. An acceptable value for class rooms and libraries ranges between 0.5-0.9 seconds. A suitable value for open offices and conference rooms ranges between 0.7 and 1.25 seconds



**NRC - NOISE ABSORPTION COEFFICIENT**

The Noise Reduction Coefficient is a scalar representation of the amount of sound energy absorbed upon striking a particular surface. an NRC of 0 indicates perfect reflection. an NRC of 1 indicates perfect absorption. Higher number equals better performance.



**SABIN**

A unit of sound absorption based on one square foot of material. Products with higher Sabin values provide more sound absorption.

**SABIN COUNT**

The sum total of the absorption coefficients in a room. Stronger NRC values will deliver higher Sabin counts.

**ACOUSTIC PERFORMANCE**

FIXTURE LENGTH	FIXTURE HEIGHT	SABINS PER OBJECT @ A GIVEN FREQUENCY				
		250hz	500hz	1000hz	2000hz	AVERAGE
4FT	12IN	2.30	4.47	7.29	8.50	<b>5.64</b>
4FT	16IN	3.38	5.74	9.05	10.52	<b>7.17</b>
5FT	12IN	2.88	5.58	9.11	10.62	<b>7.05</b>
5FT	16IN	4.22	7.17	11.31	13.14	<b>8.96</b>
6FT	12IN	3.45	6.70	10.94	12.74	<b>8.46</b>
6FT	16IN	5.06	8.60	13.58	15.77	<b>10.75</b>
8FT	12IN	4.60	8.93	14.58	16.99	<b>11.28</b>
8FT	16IN	6.75	11.47	18.10	21.03	<b>14.34</b>

**OPTICS****ZONE LINEAR DIRECT**

1" apertures with matte black or matte white multi-faceted louvers  
Regressed LED source for enhanced glare control  
Proprietary polycarbonate multi-faceted reflectors  
Available in 15°, 35° and 55°  
UGR <16

**INDIRECT OPTICS**

Extruded, satin acrylic lens designed for optimal performance and glare control  
High performance asymmetric optics  
Widespread Optic peak intensity at 120°  
Optimal mounting distance at 12" to 30" from ceiling (with WSO option)

**HOUSING**

Extruded aluminum housing with 1.5" aperture  
Die cast aluminum endcaps add 1/4" to each end of luminaire  
24-gauge LED reflector with high reflectance white powder coated finish  
Standard polyester powder coated finishes include matte white and black

**ACOUSTIC HOUSING**

Acoustic body and edge fabricated in 1/2" thick acoustic felt  
Acoustic NRC value up to 0.9 (see tests results for more details)  
Produced with recycled polyester fiber and +/- 60% from recycled water bottles  
Material is 100% recyclable  
0% VOC's  
Fire rating ASTM E-84 Class A / CAN ULC S102

**LED SYSTEM****ZONE LINEAR DIRECT**

Osram LED source  
Available in 27K, 30K, 35K, and 40K  
Standard 90+ CRI  
Color consistency < 2 SDCM  
L90 >60,000 hours

**INDIRECT OPTICS**

Proprietary LED system with color consistency <3 SDCM  
Available in 27K, 30K, 35K, and 40K  
Standard 90+CRI  
R9 value of 56  
L90 >60,000 hours

**ELECTRICAL**

Standard 0-10V, constant current drivers with 100-1% dimming range and >0.9 power factor  
Standard 120/277V universal voltage with several driver options  
All drivers are integral and easily accessible through luminaire aperture

**LISTING**

ETL listed and conforms to UL1598 standard. Certified to CSA22.2 NO.250.0. Suitable for dry locations

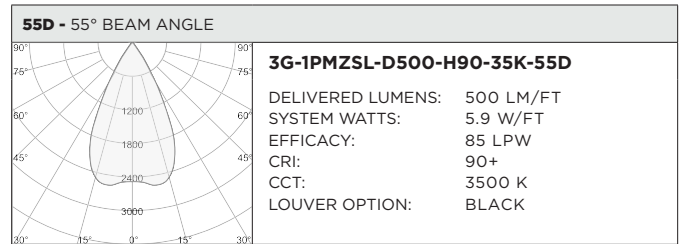
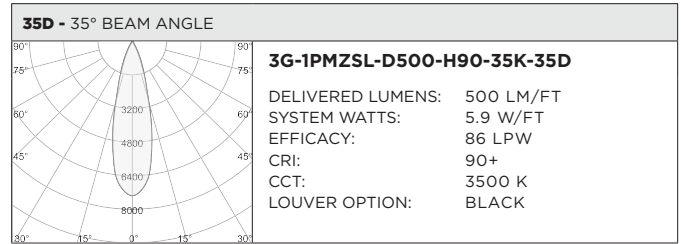
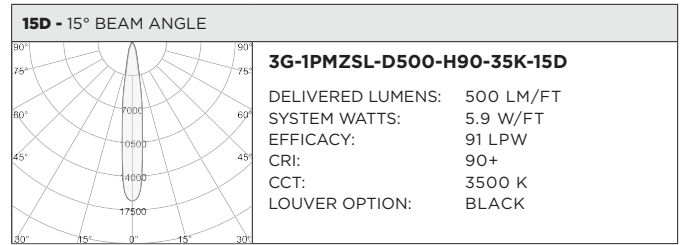
**WARRANTY**

5 Year Warranty on LED and drivers Manufacturer  
1 Year Warranty for defects in material and workmanship under normal use  
Ambient temperature at fixture should not exceed 25°C

**ZOIE DIRECT - BASED ON 35°, 90+ CRI AND 3500K SOURCE**

FIXTURE TYPE	DELIVERED LUMENS (LM/FT)	SYSTEM WATTS (W/FT)	EFFICACY (LPW)
<b>ZOIE DIRECT</b>	250	3.0	85
	500	5.9	86
	750	8.7	89
	1000	11.4	90
	1250	13.9	91

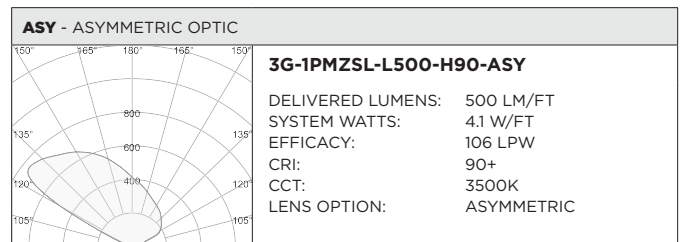
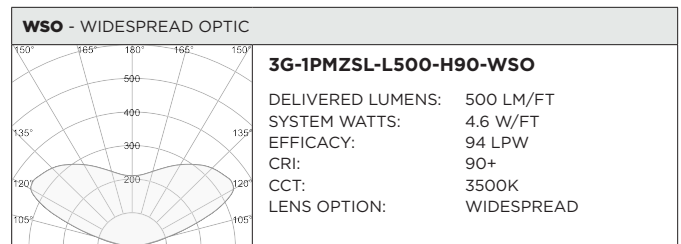
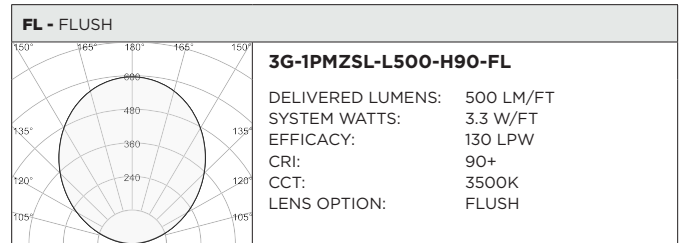
LUMEN OUTPUT MULTIPLIER: 27K=0.93, 30K=0.96, 35K=1.00, 40K=1.02



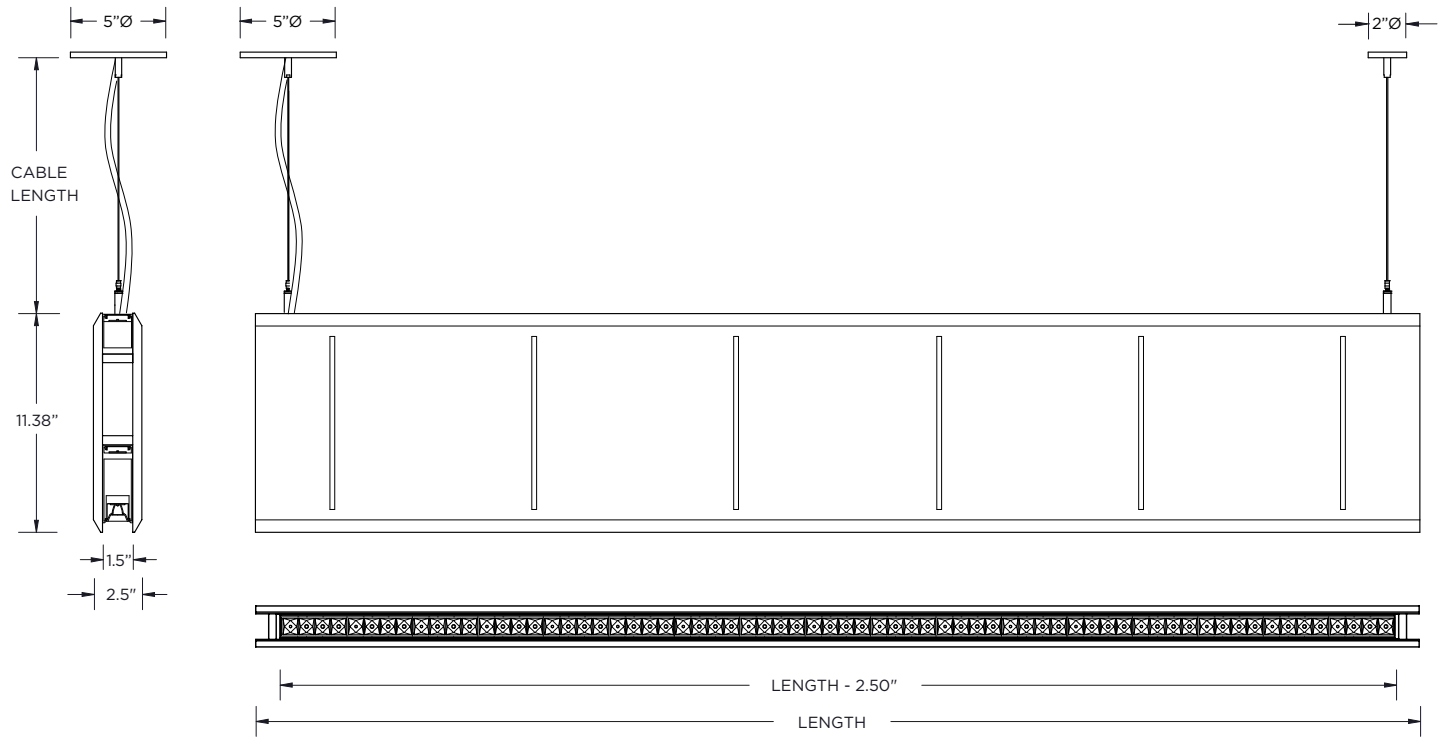
**INDIRECT - BASED ON 90+ CRI AND 3500K SOURCE**

LENS OPTION	DELIVERED LUMENS (LM/FT)	SYSTEM WATTS (W/FT)	EFFICACY (LPW)
<b>FLUSH</b>	250	1.7	128
	500	3.3	130
	750	5.2	127
<b>WIDESPREAD</b>	250	2.1	100
	500	4.6	94
<b>ASYMMETRIC</b>	250	2.1	104
	500	4.1	106
	750	6.1	107

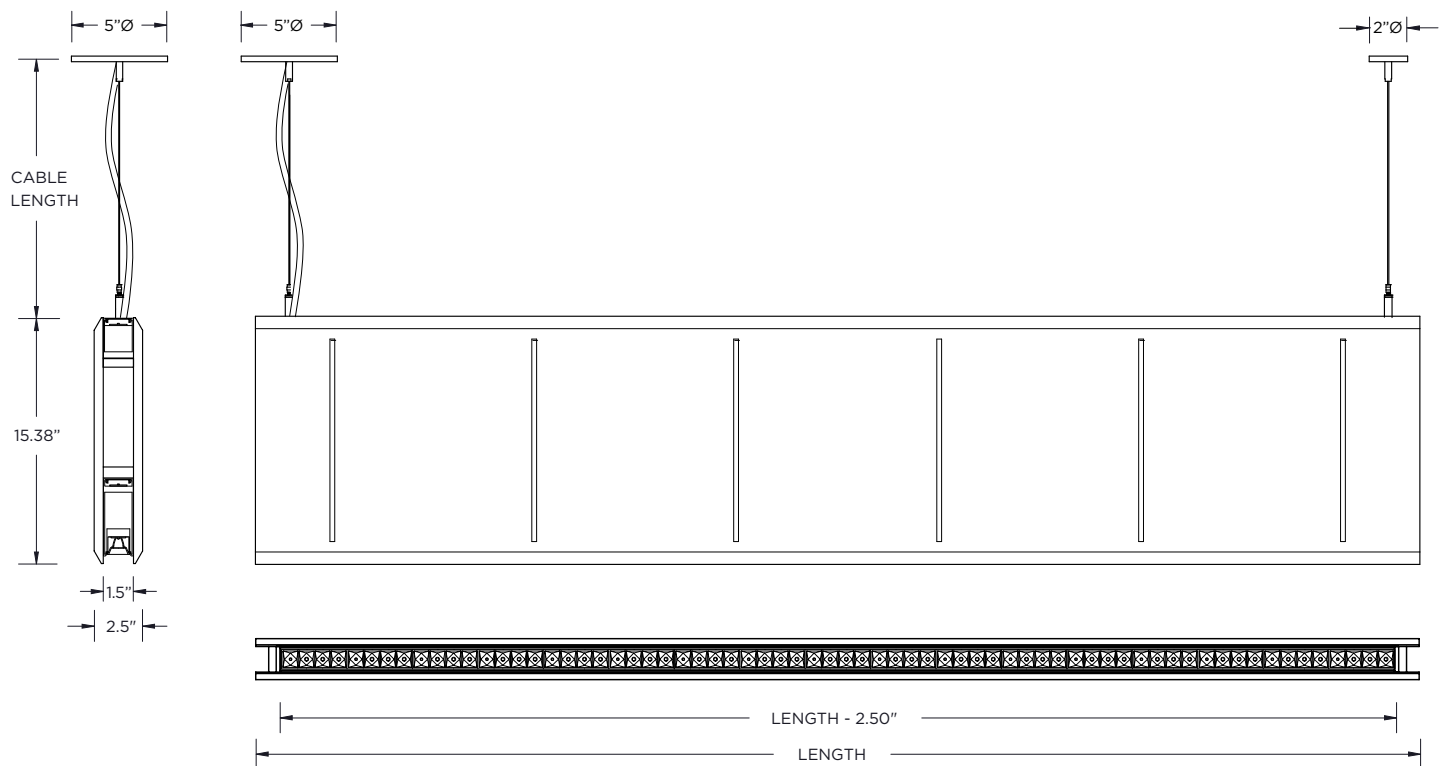
LUMEN OUTPUT MULTIPLIER: 27K=0.94, 30K=0.97, 35K=1.00, 40K=1.01

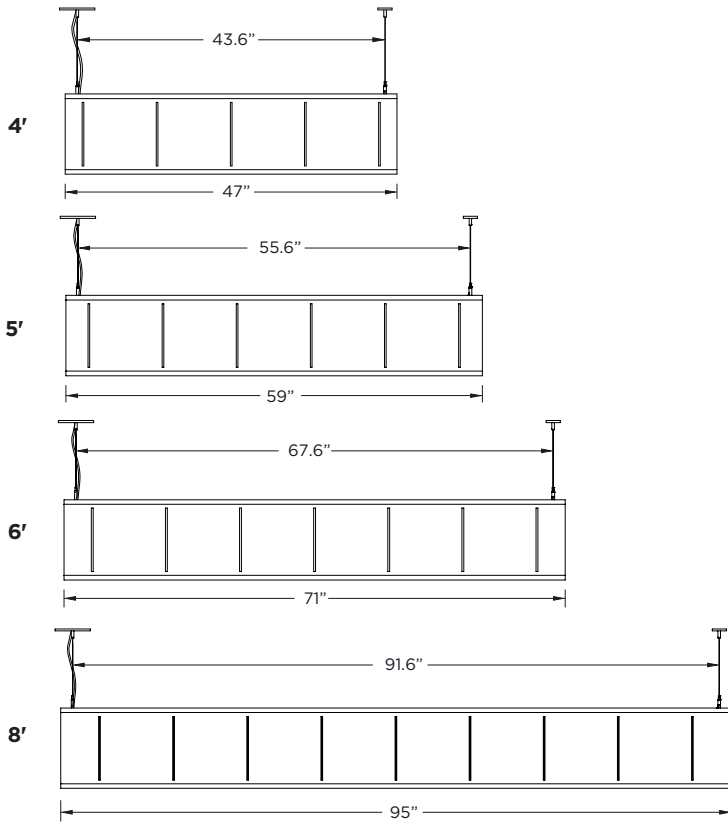


**12IN HEIGHT**



**16IN HEIGHT**





**MOUNTING DETAILS**

Adjustable aircraft cable suspension with locking fasteners  
 All mounting canopies provided in white finish as standard  
 Suitable for various architectural ceilings (see mounting details)  
 Fixture weight: 5.75 lbs/ft

