

# 3G LIGHTING

## 3G-PIN3

3 LIGHT MADISON INFORMA  
PENDANT MOUNTED

Extruded aluminum frame with fabricated mitered corners  
Solid aluminum double gimbal with dual axis adjustability  
Standard 95+ CRI LED system with performance up to 132 LPW  
Delivered lumen range per fixture head up to 4000lm at 95+ CRI  
Regressed LED source for enhanced glare control  
10° to 90° beam angle options suitable for various applications  
Companion to 3G's Madison product family



<b>PROJECT:</b>		<b>TYPE:</b>	
<b>CATALOG#:</b>		<b>DATE:</b>	<b>QTY:</b>

CAT. NO	LUMEN OUTPUT (PER FIXTURE HEAD)**	CRI	COLOR TEMP	BEAM ANGLE
<b>3G-PIN3</b>	<b>10</b> - 1000 LUMENS (3000 TOTAL) <b>15</b> - 1500 LUMENS (4500 TOTAL) <b>20</b> - 2000 LUMENS (6000 TOTAL) <b>25</b> - 2500 LUMENS (7500 TOTAL) <b>30</b> - 3000 LUMENS (9000 TOTAL) <b>40</b> - 4000 LUMENS (12,000 TOTAL) <small>All lumen outputs are <b>delivered lumens</b> at 95+ CRI</small>	<b>H95</b> - 95+ CRI	<b>27K</b> - 2700K <b>30K</b> - 3000K <b>35K</b> - 3500K <b>40K</b> - 4000K	<b>10D</b> - 10° <sup>1</sup> <b>20D</b> - 20° <b>40D</b> - 40° <b>60D</b> - 60° <b>90D</b> - 90° * <small>*90D optic supplied with lens Not available with other lens options</small>

VOLTAGE	DRIVER	GIMBAL FINISH	HOUSING FINISH
<b>UNV</b> - 120/277V <b>120</b> - 120V <b>347</b> - 347V <sup>2</sup>	<b>DIM</b> - 0-10V (100-1%) <b>LE</b> - PHASE DIM <sup>3</sup> <small>(TRIAC/ELV, 100-1%)</small> <b>D01</b> - 0-10V (100-0.1%) <b>DALI</b> - DALI (100-1%) <sup>4</sup> <b>DMX</b> - DMX (100-0%) <b>DHL2</b> - LUTRON HI-LUME LDE1 <small>(1% ECOSYSTEM)</small>	<b>NG</b> - NATURAL ALUMINUM <b>BG</b> - BLACK GIMBAL	<b>AN</b> - CLEAR ANODIZED (STANDARD) <b>BK</b> - BLACK ANODIZED

CABLE LENGTH	OPTIONS
<b>60"</b> - 60" <b>120"</b> - 120"	<b>BCN</b> - BLACK CANOPY <b>BC</b> - BLACK POWER CABLE <b>2C</b> - 2 CIRCUIT <b>SF</b> - SOFTENING LENS <b>SB</b> - SANDBLASTED LENS <b>LS</b> - LINEAR SPREAD LENS <b>HXB</b> - BLACK HEXCELL LOUVER <small>*Lens option not available with 90D optic Maximum 3 optical accessories per fixture head</small>

- <sup>1</sup> 10D reflector available up to 2500lm  
<sup>2</sup> 347 available in "DIM" 0-10V only (100-1%)  
<sup>3</sup> Phase dimming options available in 120V only  
<sup>4</sup> DALI-2 (Type 6) provided as standard

## PERFORMANCE (PER FIXTURE HEAD)

LUMEN OUTPUT	DELIVERED LUMENS	SYSTEM WATTS	EFFICACY (LPW)
1000	1000	8.1	123
1500	1500	12.3	122
2000	2000	16.2	123
2500	2500	20.5	122
3000	3000	25.8	116
4000	4000	34.2	117

BASED ON 95+ CRI, 3500K, 40D OPTIC  
Lumen output and actual wattage may vary +/- 5%

## MULTIPLIERS

BEAM ANGLE	
10D	1.05
20D	1.03
40D	1.00
60D	1.00
90D	0.90

COLOR TEMP	
2700K	0.98
3000K	1.00
3500K	1.00
4000K	1.02

## HOUSING

Extruded aluminum frame with fabricated mitered corners  
Standard clear etched anodized finish with black anodized option  
Integral driver compartment fabricated in cold rolled steel  
Driver compartments powder coated to match frame finish  
Modified lengths and custom configurations available

## ADJUSTABILITY

Solid aluminum double gimbal with dual axis adjustability  
Each double gimbal can be locked in place

## OPTICS

Proprietary anodized, aluminum reflectors  
Beam angle available in 10°, 20°, 40° and 60°, and 90°  
Reflectors are field replaceable (10° reflector not interchangeable)

## LED SYSTEM

Standard 95+ CRI  
Color consistency <2 SDCM  
Available in 27K, 30K, 35K, and 40K  
L90 > 50,000 hours

## ELECTRICAL

Standard 0-10V, constant current drivers  
100-1% dimming range and >0.9 power factor  
Standard 120/277V universal voltage with several driver options  
120V Forward Phase/Reverse Phase driver option (100-1%)  
Integral drivers are easily accessible above fixture frame

## MOUNTING

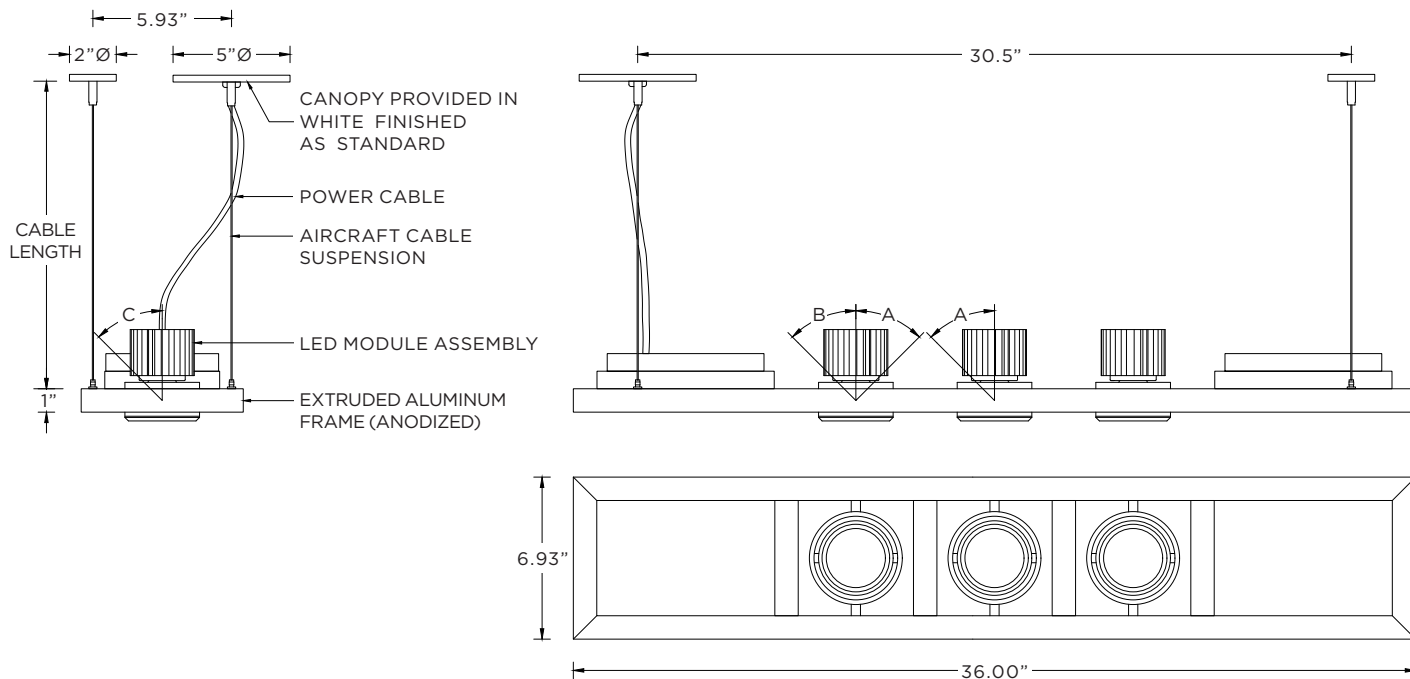
Suitable for various ceiling applications (see mounting details)  
Aircraft cable suspension with adjustable locking fasteners  
White cable and white mounting canopies provided as standard  
Power feed canopy mounts to a standard junction box

## LISTING

ETL listed and conforms to UL1598 standard  
Certified to CSA22.2 NO.250.0.  
Rated for dry or damp locations

## WARRANTY

5 year limited warranty  
LED system rated for operation in ambient environments up to 25°C



LUMEN OUTPUT	A	B	C
Up to 3000lm	45°	45°	45°
4000lm	25°	25°	45°

## MOUNTING DETAILS

