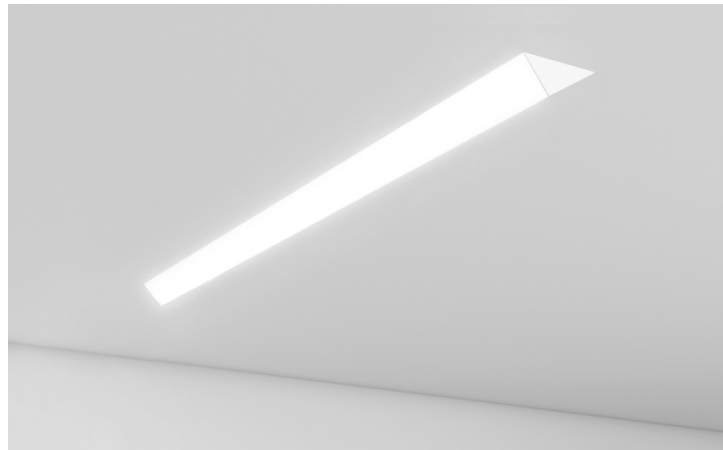




## 3G-RVLI

V-LINIA RECESSED  
TRIM, TRIMLESS & FLANGELESS

Extruded aluminum housing with cast aluminum end caps  
V-shaped acrylic lens is fully saturated with proprietary LED system  
Individual fixtures or continuous runs available in 1' increments  
Suitable for drywall, wood, and various architectural ceilings  
Low, standard, and high lumen output options available  
1% dimming standard with several driver options



### ORDERING INFORMATION

PROJECT:	<input type="text"/>	TYPE:	<input type="text"/>
CATALOG #:	<input type="text"/>	DATE:	<input type="text"/>

CAT. NO	LED SYSTEM	CRI	COLOR TEMP	VOLTAGE	DRIVER
3G-RVLI	L1 - LOW OUTPUT L2 - STANDARD OUTPUT L4 - HIGH OUTPUT	S80 - 80+CRI (STANDARD) H90 - 90+CRI	27K - 2700K 30K - 3000K 35K - 3500K 40K - 4000K	UNV - 120/277V 347 - 347V (0-10V ONLY)	DIM - 0-10V (STANDARD 100-1%) DHL2 - LUTRON HI-LUME LDE (100-1% ECOSYSTEM) DALI - DALI (100-1%) D01 - 0-10V (100-0.1%)

FLANGE TYPE	OPTIONS	LENGTH (FEET)
WT - WHITE TRIM XTR - TRIMLESS FX - FLANGELESS	EM - INTEGRAL EMERGENCY BATTERY (4' SECTION) CP - CHICAGO PLENUM	S-2' - 2' S-3' - 3' S-4' - 4' S-5' - 5' S-6' - 6' S-8' - 8' S- ____' (STRAIGHT RUN)* <small>* For continuous runs (9' and up), specify length in feet in 1' increments Fixture sections are connected on site using 3G's joiner plate kit</small>

### PERFORMANCE CHART (Based on 3500K, 4' length)

LED SYSTEM	SYSTEM WATTS (PER FT)	DELIVERED LUMENS (PER FT)	EFFICACY (LM/W)
L1 - LOW OUTPUT	3.4	389	116
L2 - STANDARD OUTPUT	4.9	576	118
L4 - HIGH OUTPUT	8.6	1007	117

LUMEN OUTPUT ADJUSTMENT FACTORS: (27K=0.94) (30K=0.97) (35K=1.00) (40K=1.01)



**3G-RVLI**

**LIGHTING** V-LINIA RECESSED - TRIM, TRIMLESS & FLANGELESS

## TECHNICAL

### HOUSING

Extruded aluminum housing with cast aluminum end caps  
Individual units and continuous runs available in 1' increments  
Trim flange with matte white powder coated finish and minimal 0.375" overlap  
Trimless model features a satin coat mudding flange  
24 gauge LED reflector with high reflectance white powder coated finish  
Extruded acrylic lens with a satin finish designed for optimal performance and glare control  
Standard polyester powder coated matte white finish

### ELECTRICAL

Standard 0-10V, 100-1% dimming and 0.9 power factor  
Standard 120/277V universal voltage drivers. Optional 347V 0-10V driver  
Lutron EcoSystem and eldoLED Dali options available with 100-1% dimming  
All drivers are integral and easily accessible through the aperture  
Integral Emergency Battery: 90 minutes

### LED SYSTEM

Proprietary LED system  
Color consistency < 3 SDCM  
Standard (80+CRI). Optional (90+CRI)  
Available in 27K, 30K, 35K, and 40K  
Average rated life of > 50,000 hours  
5-year warranty

### MOUNTING

Housing suspended via 1/4" threaded rod  
Trim fixture designed for use in drywall, wood, and other architectural ceiling materials  
Trimless fixture designed for use in drywall, mud-in ceiling applications  
Flangeless fixture designed for use in wood ceilings

### LISTING

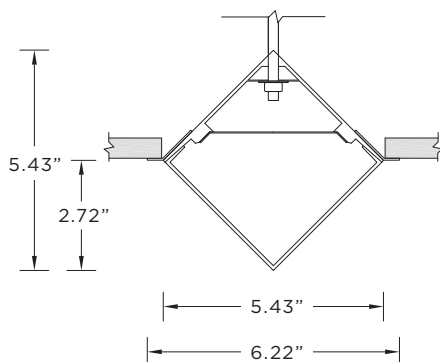
ETL listed and tested to UL standards. Suitable for dry and damp locations

### WARRANTY

5 Year warranty on LED and drivers  
Manufacturer 1-year warranty for defects in material and workmanship under normal use  
Ambient temperature at fixture should not exceed 25°C

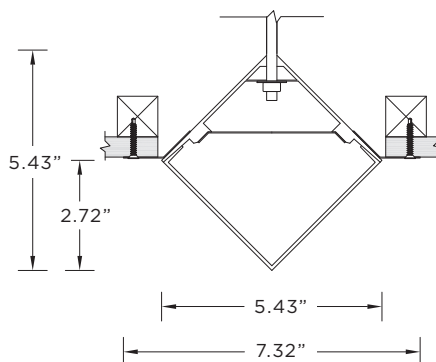
### DRAWINGS AND DIMENSIONS

#### WT - TRIM



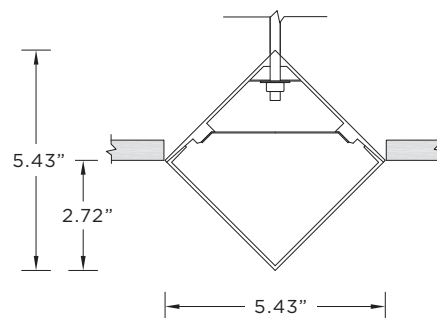
**CEILING CUT-OUT**  
5.75" X (LENGTH + 0.5")

#### XTR - TRIMLESS

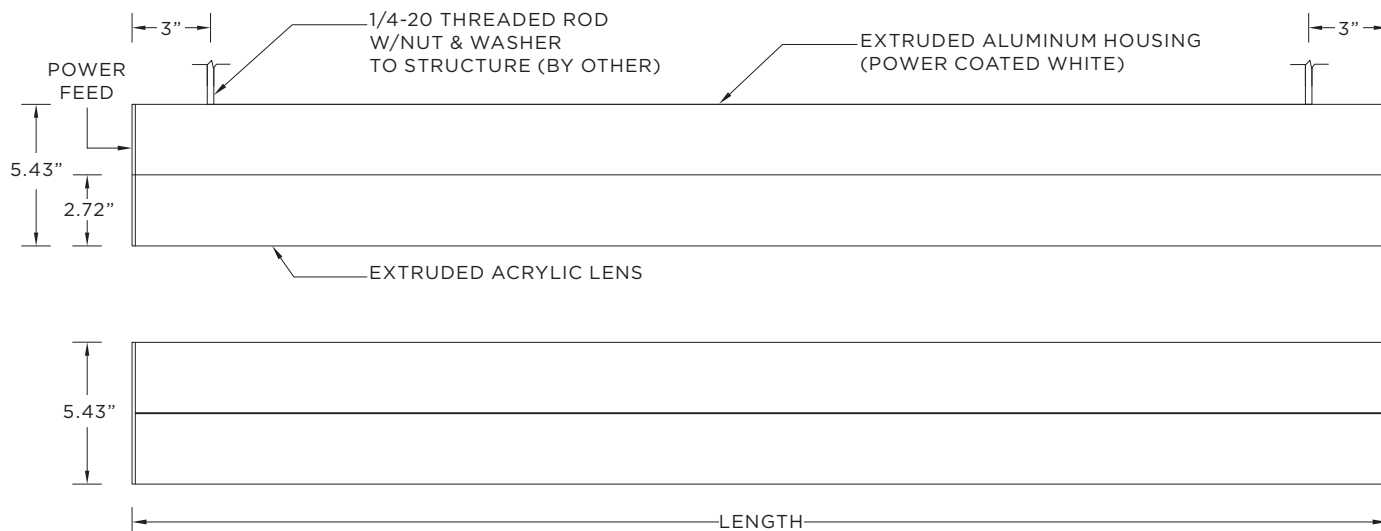


**CEILING CUT-OUT**  
5.75" X (LENGTH + 0.5")

#### FX - FLANGELESS

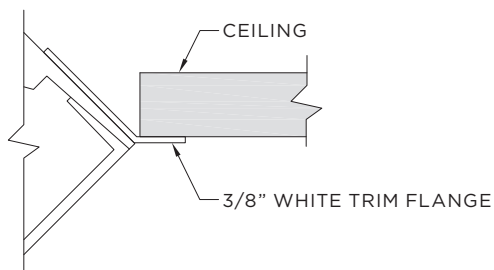


**CEILING CUT-OUT**  
5.75" X (LENGTH + 0.5")

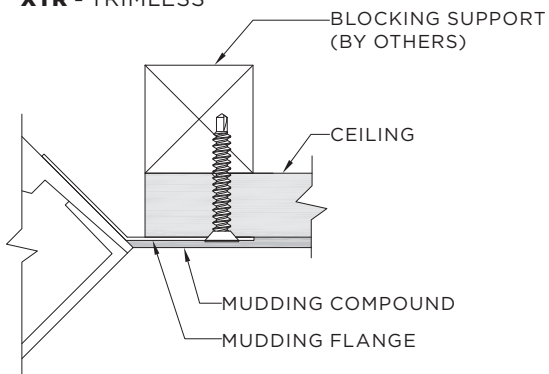


### MOUNTING

#### WT - TRIM



#### XTR - TRIMLESS



#### FX - FLANGELESS

