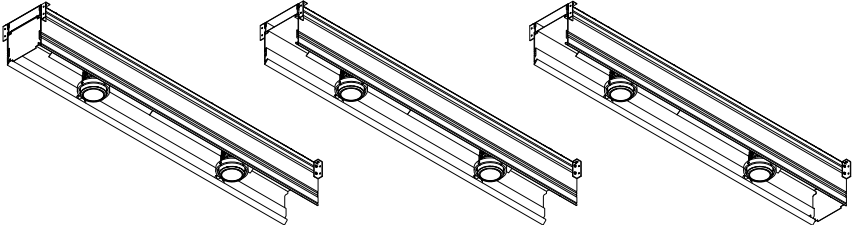








**3G-58RMSL, 3G-48RMSL, 3G-38RMSL**  
**5.8”, 4.8” and 3.8” RECESSED SLOT**  
GRID CEILING



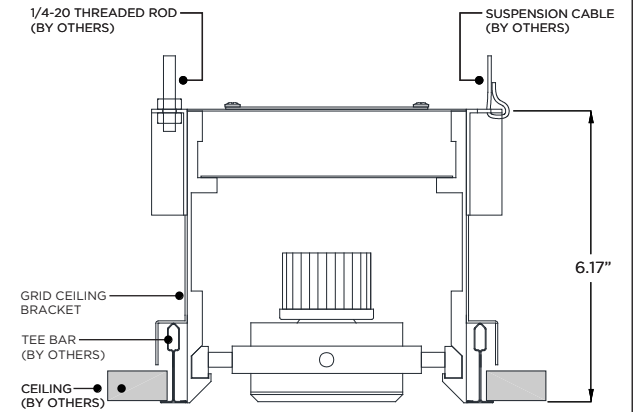
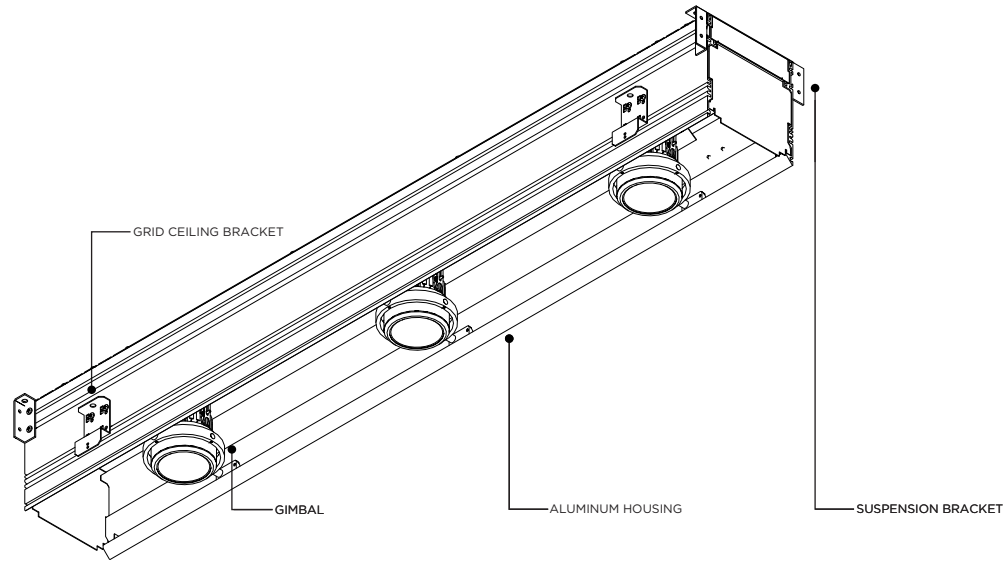
**⚠ FOR NEW CONSTRUCTION INSTALLATION ONLY**  
**i THE IMAGES SHOWN ARE FOR ILLUSTRATION PURPOSES ONLY AND MAY NOT BE AN EXACT REPRESENTATION OF THE PRODUCT**

FIXTURE TYPES			INCLUDED COMPONENTS		
58RMSL PROFILE	48RMSL PROFILE	38RMSL PROFILE	 STARTER                      JOINER                      ENDER		

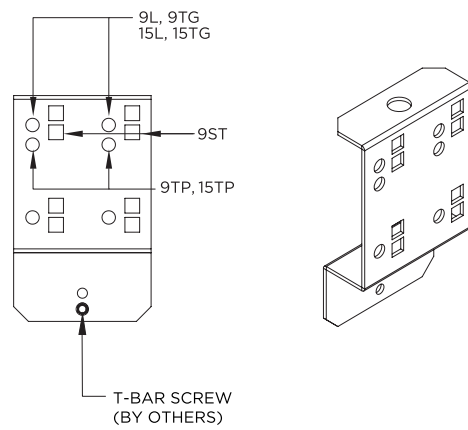
INSTRUCTION KEY	INFORMATION
 ADDITIONAL	INSTALLATION SHOULD ONLY BE PERFORMED BY A CERTIFIED ELECTRICIAN REFER TO LOCAL/NATIONAL CODES FOR PROPER INSTALLATION FAILURE TO FOLLOW INSTALLATION INSTRUCTION MAY VOID THE WARRANTY DO NOT TOUCH LEDS. LEDS MUST BE PROTECTED FROM MECHANICAL STRESS OR DEBRIS TURN OFF POWER DURING INSTALLATION OR SERVICING
 ATTENTION	
 POWER ON	
 POWER OFF	

OVERVIEW

GRID CEILING

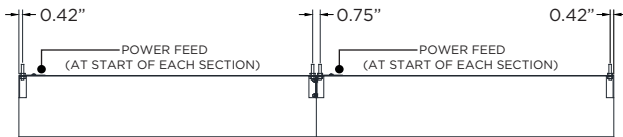


GRID CEILING MOUNTING BRACKET

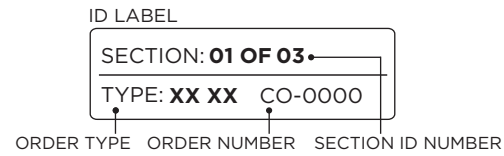


 UNIVERSAL MOUNTING BRACKET FOR ALL GRID CEILING TYPES

### THREADED ROD LOCATION



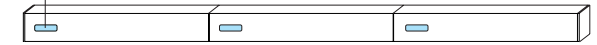
### IDENTIFICATION AND PREPARATION



**i** IDENTIFY FIXTURE SECTIONS BY THE ID LABELS FOUND ON THE BOX INSIDE THE SECTIONS

### ID LABEL

SECTION: **01 OF 03**  
TYPE: **XX XX** CO-0000



STARTER

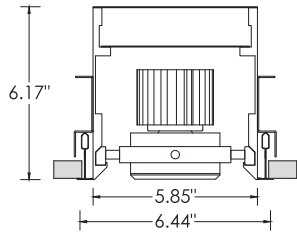
JOINER

ENDER

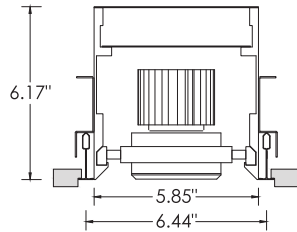
OVERVIEW

**3Gi-58RMSL**

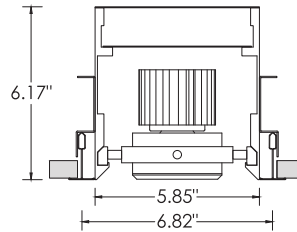
**9L - 9/16" LAYIN**



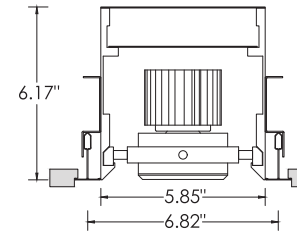
**9TG - 9/16" TEGULAR**



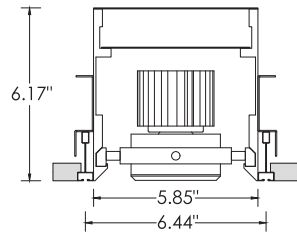
**15L - 15/16" LAYIN**



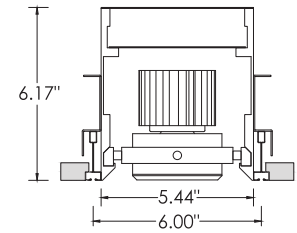
**15TG - 15/16" TEGULAR**



**9ST - 9/16" SLOT TEE**  
TEGULAR

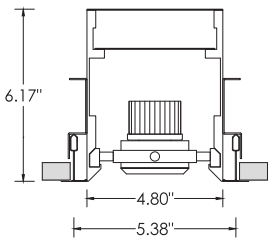


**6TZ - TECHZONE**

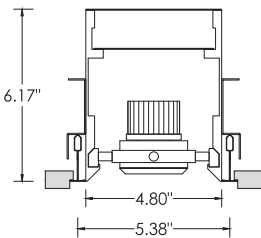


**3Gi-48RMSL**

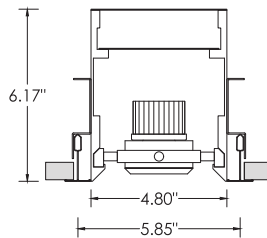
**9L - 9/16" LAYIN**



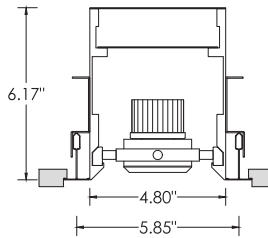
**9TG - 9/16" TEGULAR**



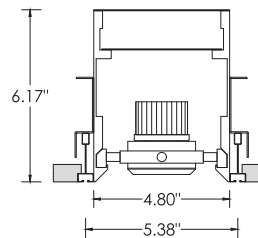
**15L - 15/16" LAYIN**



**15TG - 15/16" TEGULAR**



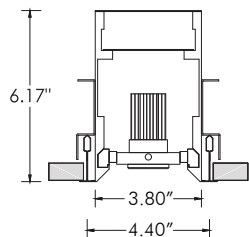
**9ST - 9/16" SLOT TEE**  
TEGULAR



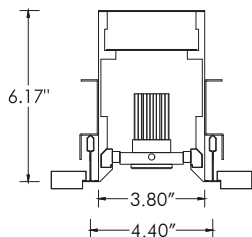
OVERVIEW

**3Gi-38RMSL**

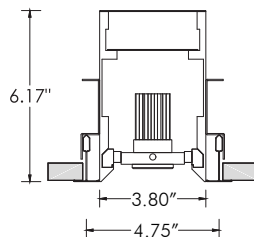
**9L - 9/16" LAYIN**



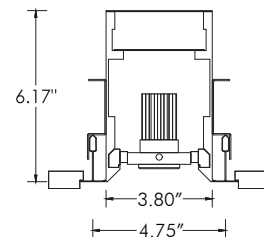
**9TG - 9/16" TEGULAR**



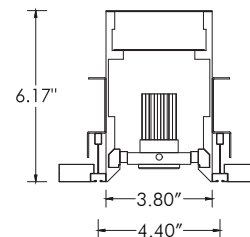
**15L - 15/16" LAYIN**

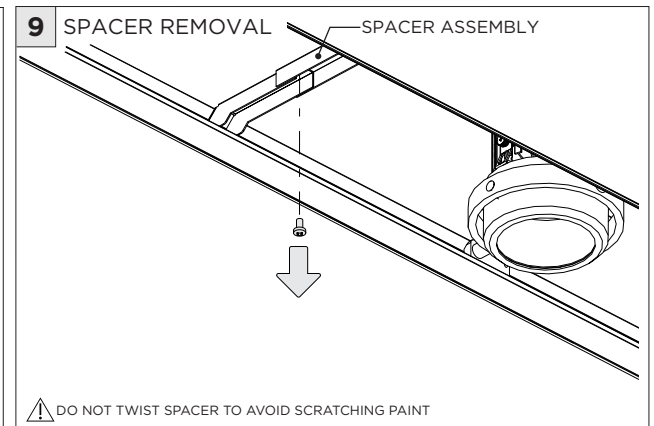
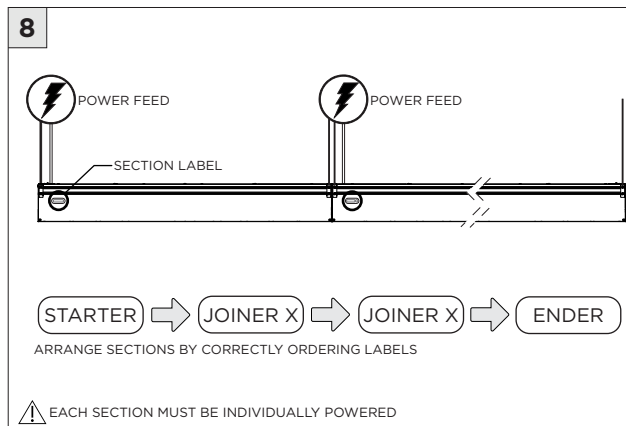
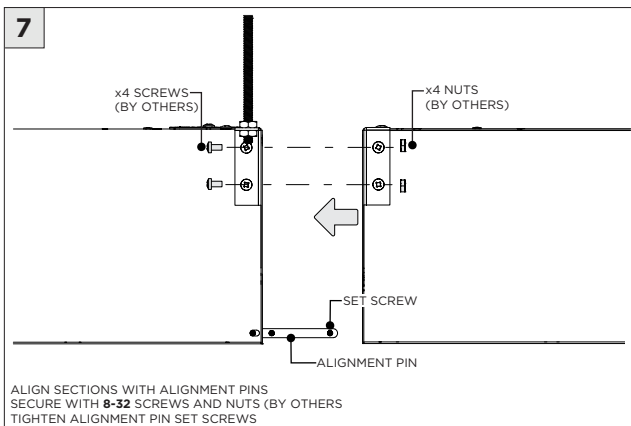
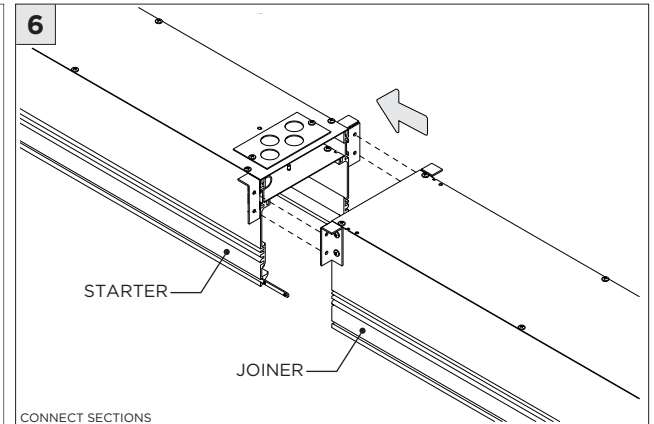
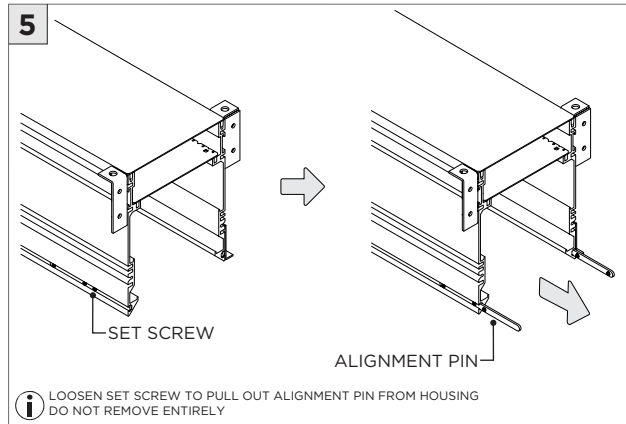
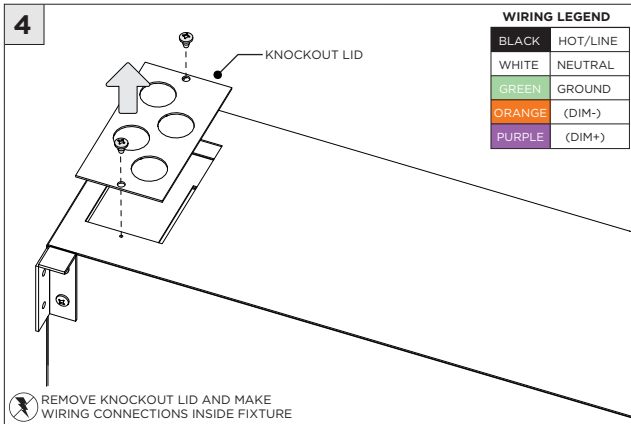
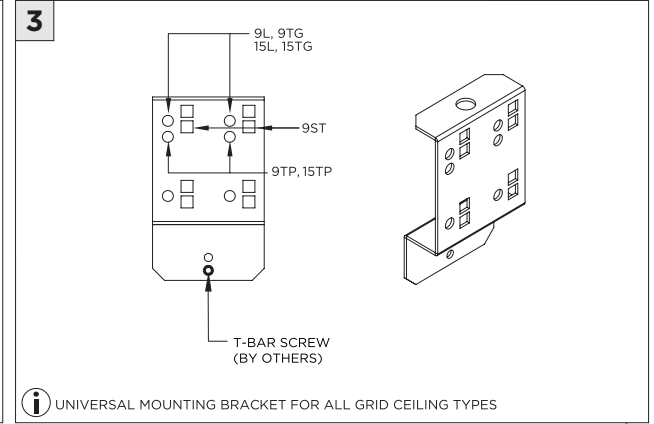
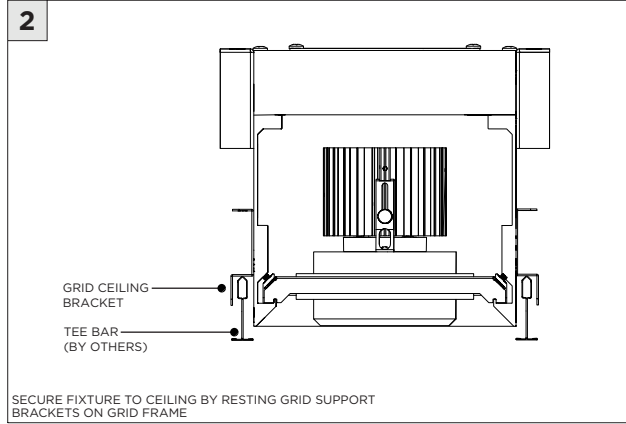
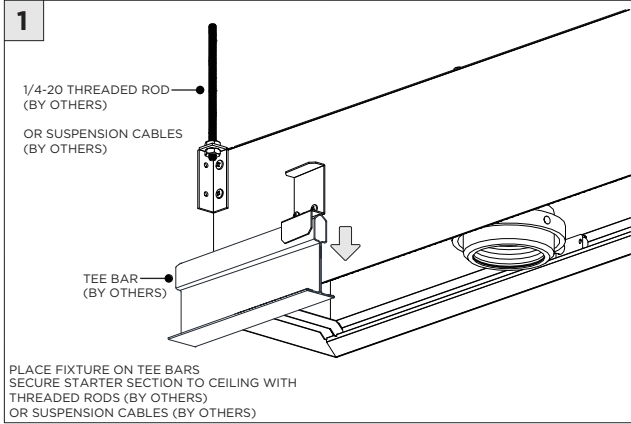


**15TG - 15/16" TEGULAR**

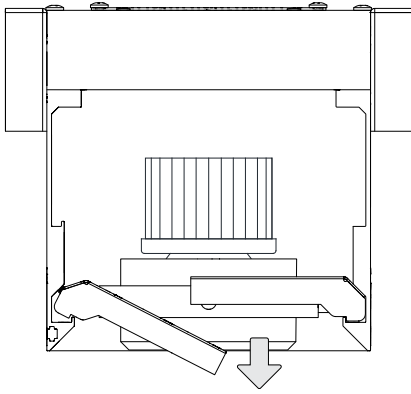


**9ST - 9/16" SLOT TEE  
TEGULAR**

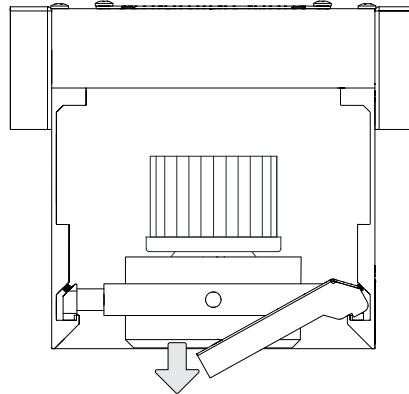




10

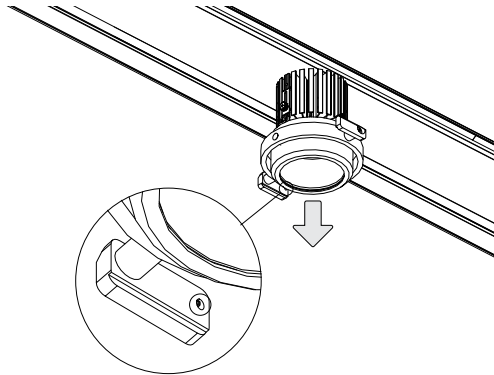


11

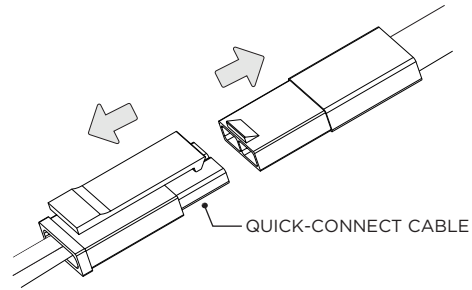


**LED SERVICING - 48/58RMSL**

**1**



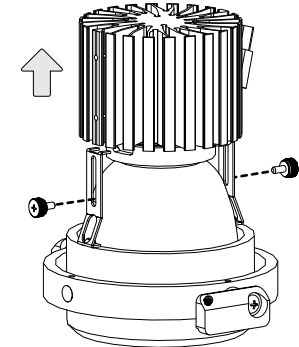
**2**



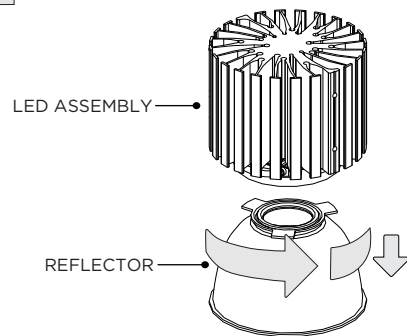
QUICK-CONNECT CABLE

DISCONNECT QUICK-CONNECT CABLE FROM LED ASSEMBLY

**3**



**4**



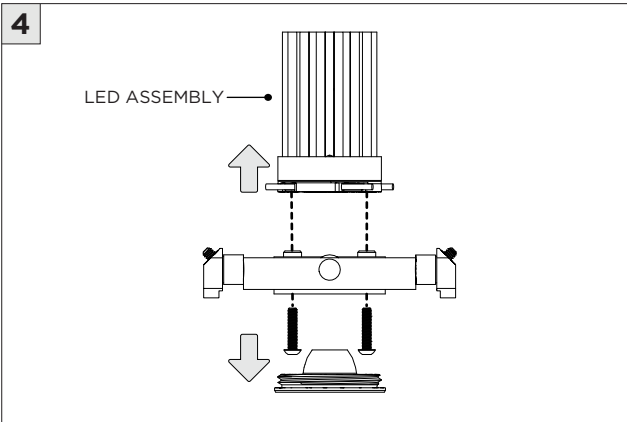
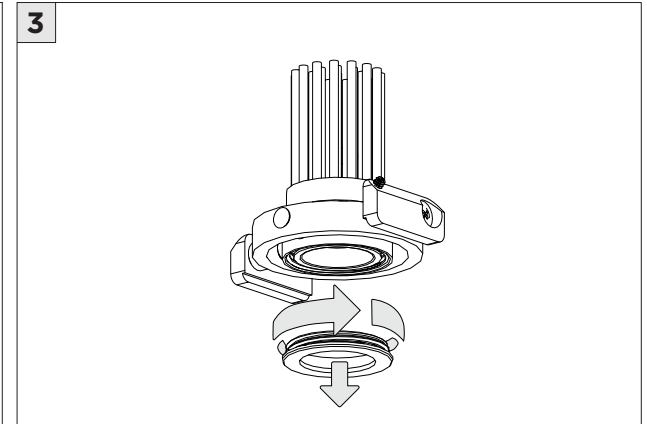
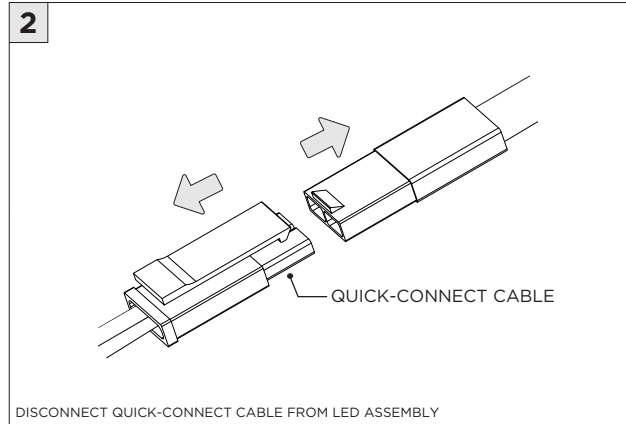
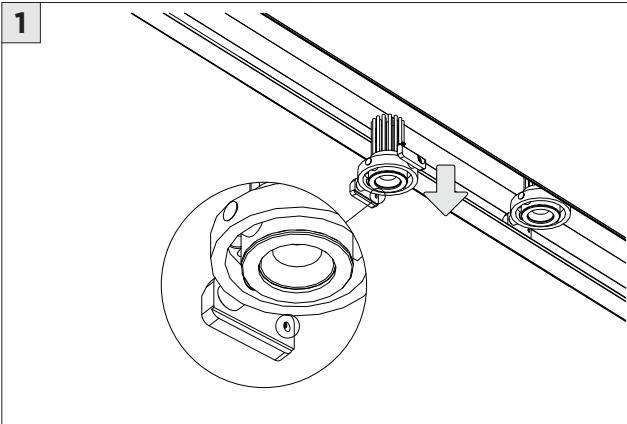
LED ASSEMBLY

REFLECTOR

TWIST REFLECTOR TO REMOVE FROM LED ASSEMBLY



**LED SERVICING - 38RMSL**



**DRIVER SERVICING - 38/48/58RMSL**

