

3G LIGHTING

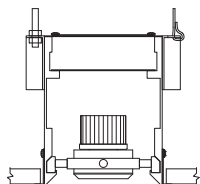
3G-48RMSL

4.8" RECESSED
MINI MADISON SLOT

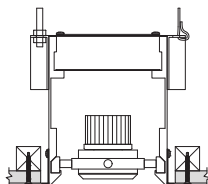
Solid aluminum double gimbal with dual axis adjustability
Individual fixture heads can be repositioned in either direction (up to 18")
Standard 95+ CRI LED system with performance up to 143 LPW
Delivered lumen range up to 2250lm at 95+ CRI
Regressed LED source for enhanced glare control
10° to 90° beam angle options suitable for various applications
Companion to 3G's Madison product family



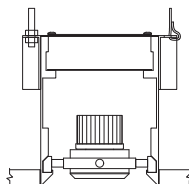
WT - TRIM



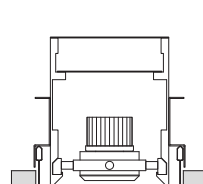
XTR - TRIMLESS



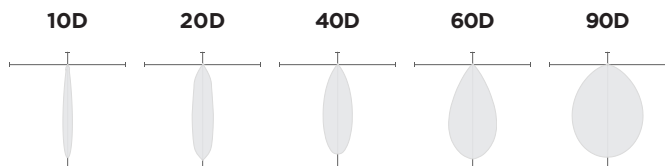
FX - FLANGELESS



GCX - GRID CEILING



OPTICS



PERFORMANCE

LUMEN OUTPUT	DELIVERED LUMENS	SYSTEM WATTS	EFFICACY (LPW)
1000	1000	8.5	117
1500	1500	13.5	111
2000	2000	18.5	108
2250	2250	21.2	106

BASED ON 95+ CRI, 3500K, 40D OPTIC
Lumen output and actual wattage may vary +/- 5%

PATTERNS

Specify pattern shape and overall dimensions as shown below. Patterns are connected with 12"x12" mitered corner sections (Fixture heads not available)
Please consult factory for custom patterns and shapes not shown below.

L-SHAPE	U-SHAPE	RECTANGLE/SQUARE
<p>Provide dimensions of AxB Example: L - 6'x8'</p>	<p>Provide dimensions of AxBxC Example: U - 8'x10'x6"</p>	<p>Provide dimensions of AxB Example: R - 10'x8'</p>

PROJECT:		TYPE:	
CATALOG#:		DATE:	QTY:

CAT. NO	LUMEN OUTPUT**	CRI	COLOR TEMP	BEAM ANGLE	VOLTAGE
3G-48RMSL	10 - 1000 LUMENS 15 - 1500 LUMENS 20 - 2000 LUMENS 22 - 2250 LUMENS <small>All lumen outputs are delivered lumens at 95+ CRI</small>	H95 - 95+ CRI	27K - 2700K 30K - 3000K 35K - 3500K 40K - 4000K	10D - 10° ¹ 20D - 20° 40D - 40° 60D - 60° 90D - 90° * <small>*90D optic supplied with lens Not available with other lens options</small>	UNV - 120/277V 120 - 120V 347 - 347V ²

DRIVER	TRIM FLANGE	GIMBAL FINISH	HOUSING FINISH
DIM - 0-10V (100-1%) LE - PHASE DIM ³ <small>(TRIAC/ELV, 100-1%)</small> DO1 - 0-10V (100-0.1%) DALI - DALI (100-1%) ⁴ DHL2 - LUTRON HI-LUME <small>(1% ECOSYSTEM)</small> DMX - DMX (100-0%)	WT - WHITE TRIM (STANDARD) BT - BLACK TRIM XTR - TRIMLESS (MUD-IN DRYWALL) FX - FLANGELESS GCX - GRID CEILING * <small>(UNIVERSAL MOUNT)</small> <small>*Universal mounting brackets used for all grid ceiling types only. See mounting details</small>	NG - NATURAL ALUMINUM BG - BLACK GIMBAL WG - WHITE GIMBAL	BK - BLACK (STANDARD) WH - WHITE

OPTIONS	RUN TYPE	FIXTURE HEAD SPACING
2C - 2 CIRCUIT 3C - 3 CIRCUIT SF - SOFTENING LENS LS - LINEAR SPREAD LENS SB - SANDBLASTED LENS HXB - BLACK HEXCELL LOUVER CP - CHICAGO PLENUM EMR - REMOTE EMERGENCY ⁵ BATTERY <small>*Lens options not available with 90D optic Maximum 2 optical accessories</small>	S - ____' (STRAIGHT) L - ____'x ____' (L-SHAPE) U - ____'x ____'x ____' (U-SHAPE) R - ____'x ____' (RECTANGLE/SQUARE) <small>Continuous runs available in 1" increments Patterns not available with grid ceiling</small>	12" - 12" ON CENTER 18" - 18" ON CENTER 24" - 24" ON CENTER 36" - 36" ON CENTER 48" - 48" ON CENTER CUS - CUSTOM SPACING SPECIFY NUMBER OF DOWNLIGHTS " CUS(XX) "

- ¹ 10D and 20D reflector available up to 2000lm
² 347 available in "DIM" 0-10V only (100-1%)
³ Phase dimming options available in 120V only
⁴ DALI-2 (Type 6) provided as standard. Please consult factory for DALI (Type 8) options
⁵ Supplied with enclosure with Emergency Battery and driver. Installed remotely by others.
 Not accessible through fixture aperture

****** 3G has upgraded our LED system and overall performance at no additional cost. We now offer 95+CRI as standard. All lumen outputs are delivered lumens. This upgraded LED system is more efficient than our previous 80CRI, 90CRI, and 97CRI options. Please see the last page of this spec sheet to cross-reference old lumen outputs with our new, 95+CRI lumen output options

PERFORMANCE

LUMEN OUTPUT	DELIVERED LUMENS	SYSTEM WATTS	EFFICACY (LPW)
1000	1000	8.5	117
1500	1500	13.5	111
2000	2000	18.5	108
2250	2250	21.2	106

BASED ON 95+ CRI, 3500K, 40D OPTIC
Lumen output and actual wattage may vary +/- 5%

MULTIPLIERS

BEAM ANGLE	
10D	0.97
20D	1.20
40D	1.00
60D	1.02
90D	0.90

COLOR TEMP	
2700K	0.98
3000K	1.00
3500K	1.00
4000K	1.02

HOUSING

Housing constructed in extruded aluminum and cold rolled steel
Designed for continuous runs in various configurations
Maximum ceiling thickness of 1.75". Consult factory for modifications
Standard matte black powder coated housing finish
Trim flange with powder coated finish and 0.400" overlap
Trimless model features a perforated galvanized mudding flange

ADJUSTABILITY

Solid aluminum double gimbal with dual axis adjustability
Individual fixture heads can be repositioned within channel
Movement allowable up to 18" in either direction
Each double gimbal can be locked in place

OPTICS

Proprietary anodized, aluminum reflectors
Beam angle available in 10°, 20°, 40° and 60°, and 90°
Reflectors are field replaceable
10° and 20° reflectors are multi-faceted (not interchangeable with other options)

LED SYSTEM

Standard 95+ CRI
Color consistency <2 SDCM
Available in 27K, 30K, 35K, and 40K
L90 > 50,000 hours

ELECTRICAL

Standard 0-10V, constant current drivers
100-1% dimming range and >0.9 power factor
Standard 120/277V universal voltage with several driver options
120V Forward Phase/Reverse Phase driver option (100-1%)
Integral drivers are easily accessible through luminaire aperture

EMERGENCY

7W output for 90 minutes (One fixture head +/- 850lm at 95+ CRI)
Title 24 Certified
Remote emergency battery not accessible through fixture aperture
Maximum remote mounting distance:
3000lm or below - 50ft (12AWG) or 25ft (14AWG)
Caution: Emergency Battery utilizes more than one power source and servicing should be performed by qualified personnel

MOUNTING

New construction housing suspended via 1/4" threaded rod or suspension cables (by others)
Trim fixture designed for use in drywall, wood, and other architectural ceiling materials
Trimless fixture designed for use in drywall, mud-in ceiling applications
Flangeless fixture designed for use in wood ceilings
Suitable for various grid ceiling applications (see mounting details)

LISTING

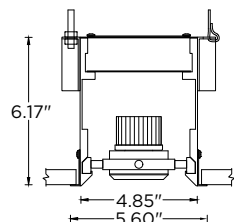
ETL listed and conforms to UL1598 standard
Certified to CSA22.2 No.250.0.
Rated for dry or damp locations

WARRANTY

5 year limited warranty
LED system rated for operation in ambient environments up to 25°C

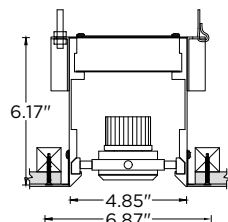
HARD CEILING

WT - TRIM



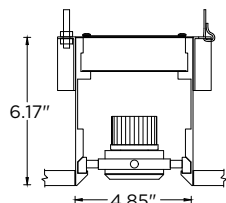
RECOMMENDED CEILING
CUT-OUT 5.20"

XTR - TRIMLESS



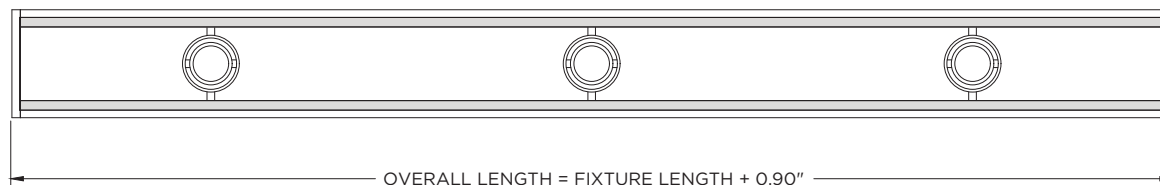
RECOMMENDED CEILING
CUT-OUT 5.20"

FX - FLANGELESS

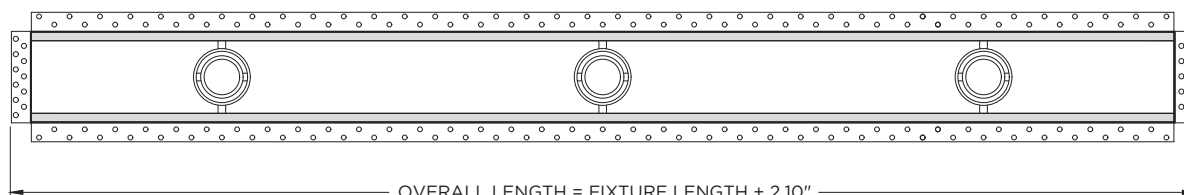


RECOMMENDED CEILING
CUT-OUT 4.90"

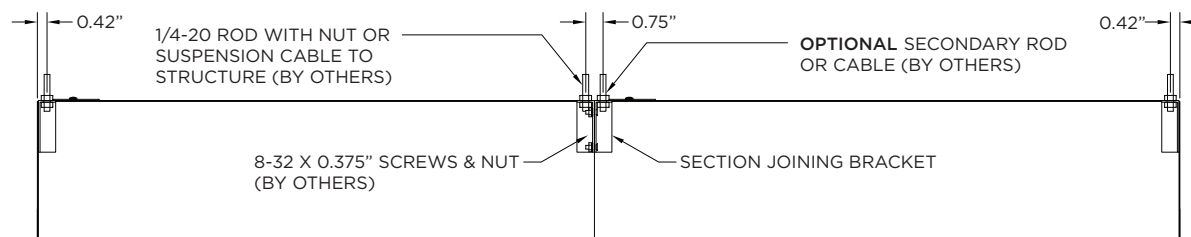
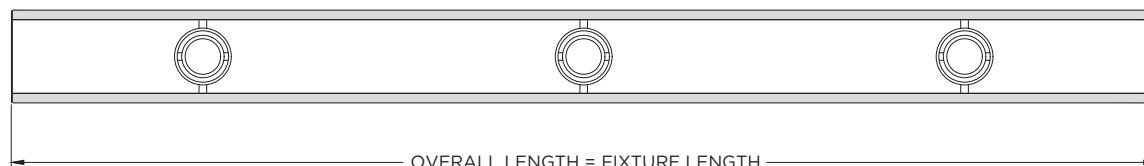
TRIM



TRIMLESS (MUD-IN DRYWALL)

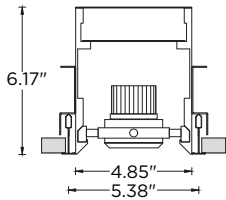


FLANGELESS

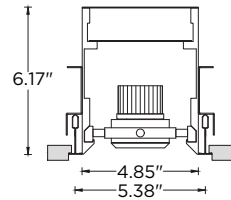


GRID CEILING

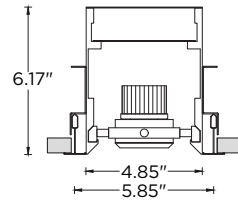
9L - 9/16" LAYIN



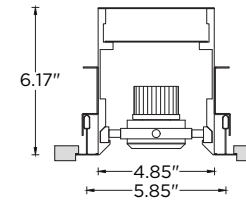
9TG - 9/16" TEGULAR



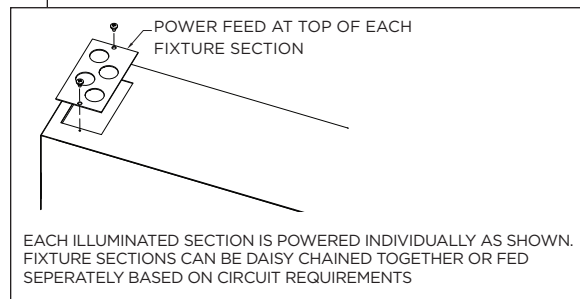
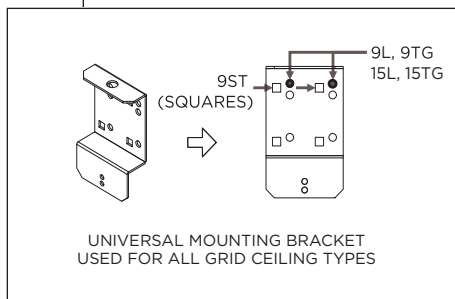
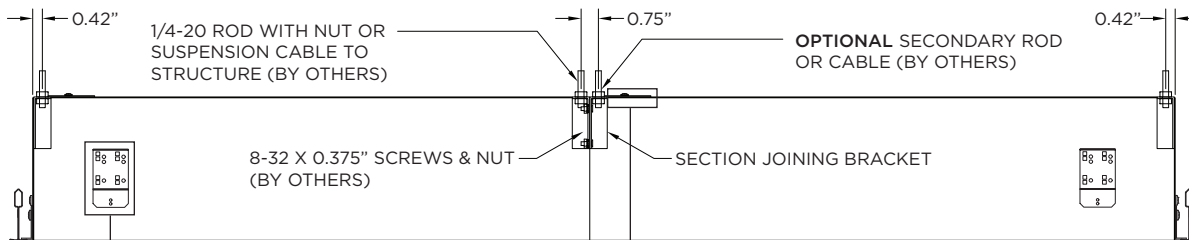
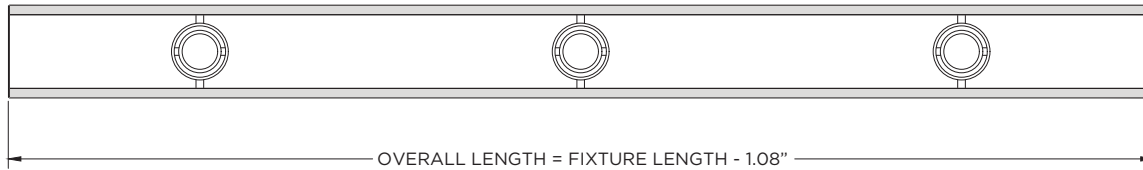
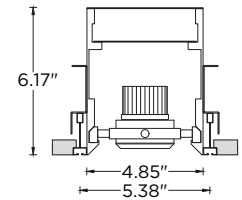
15L - 15/16" LAYIN



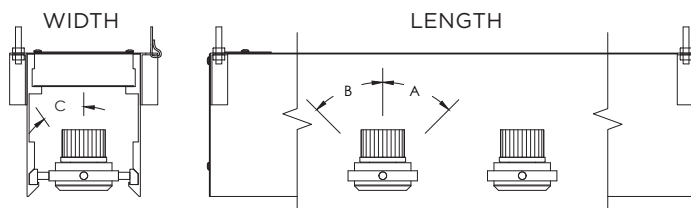
15TG - 15/16" TEGULAR



9ST - 9/16" SLOT TEE TEGULAR



GIMBAL ADJUSTABILITY



LUMEN OUTPUT	A	B	C
Up to 2000lm	45°	45°	25°
2250lm	45°	45°	20°

LUMEN OUTPUT REFERENCE CHART

3G has upgraded our LED system and overall performance at no additional cost. We now offer 95+CRI as standard. All lumen outputs are delivered lumens. This new LED system is more efficient than our previous 80CRI, 90CRI, and 97CRI options. Please use these charts to cross-reference old lumen outputs with our new, 95+CRI lumen output options

80CRI REFERENCE CHARTS

MATCH THE GRADIENT SHADE FROM THE OLD LUMEN OUTPUT CHART TO THE NEW LUMEN OUTPUT OPTION

OLD 80CRI SPECS			
LUMEN OUTPUT	DELIVERED LUMENS	SYSTEM WATTS	EFFICACY (LPW)
1000	1015	10.2	100
1500	1400	13.9	101
2200	2194	22.0	100

NEW 95+CRI SPECS			
LUMEN OUTPUT	DELIVERED LUMENS	SYSTEM WATTS	EFFICACY (LPW)
1000	1000	8.5	117
1500	1500	13.5	111
2000	2000	18.5	108
2250	2250	21.2	106

90CRI REFERENCE CHARTS

MATCH THE GRADIENT SHADE FROM THE OLD LUMEN OUTPUT CHART TO THE NEW LUMEN OUTPUT OPTION

OLD 90CRI SPECS			
LUMEN OUTPUT	DELIVERED LUMENS	SYSTEM WATTS	EFFICACY (LPW)
1000	893	10.2	88
1500	1232	13.9	89
2200	1931	22.0	88

NEW 95+CRI SPECS			
LUMEN OUTPUT	DELIVERED LUMENS	SYSTEM WATTS	EFFICACY (LPW)
1000	1000	8.5	117
1500	1500	13.5	111
2000	2000	18.5	108
2250	2250	21.2	106