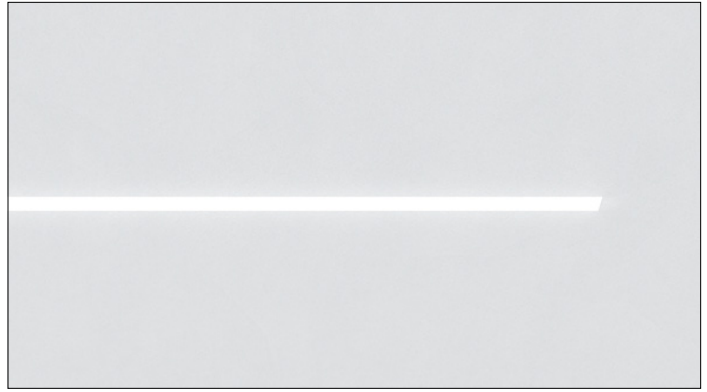


3G LIGHTING

3G-1RLI

1.5" RECESSED LINEAR



Narrow 1.5" aperture with one piece extruded aluminum housing
 Individual or continuous runs available in multiple run configurations
 Suitable for drywall, wood, grid ceiling, and other architectural ceiling applications
 LED system with performance up to 118 lumens per watt
 Extruded acrylic lens with optimal performance and glare control
 Asymmetric optics available
 1% dimming standard with several driver options

PROJECT:		TYPE:	
CATALOG#:		DATE:	QTY:

CAT. NO	LUMEN OUTPUT	CRI	COLOR TEMP	VOLTAGE
3G-1RLI	D250 - 250 LM/FT ¹ D500 - 500 LM/FT D750 - 750 LM/FT D1000 - 1000 LM/FT ² DC__ - CUSTOM OUTPUT (SPECIFY LM/FT) * <small>*Specify custom lumen outputs in 50lm increments (ie: DC600, DC650, DC700) Custom output cannot exceed D1000</small>	S80 - 80+ CRI ³ H90 - 90+ CRI	27K - 2700K 30K - 3000K 35K - 3500K 40K - 4000K	UNV - 120/277V 347 - 347V ⁴

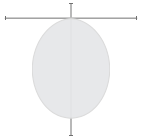
DRIVER	FLANGE TYPE	LENS OPTION	OPTIONS
DIM - 0-10V (100-1%) D01 - 0-10V (100-0.1%) DALI - DALI (100-1%) ⁵ DHL2 - LUTRON HI-LUME (1% ECOSYSTEM) DMX - DMX (100-0%)	GCX - GRID CEILING * (UNIVERSAL MOUNT) WT - WHITE TRIM FLANGE XTR - TRIMLESS (MUD-IN DRYWALL) FX - FLANGELESS <small>*Universal mounting brackets used for all grid ceiling types only. See mounting section for details</small>	FL - FLUSH LENS DWSO - WIDESPREAD LENS (BATWING) DASY - ASYMMETRIC LENS	EMB - EMERGENCY BATTERY * (INTEGRAL) EMC - EMERGENCY CIRCUIT MC2 - MULTIPLE CIRCUITS (2 ZONES) MC3 - MULTIPLE CIRCUITS (3 ZONES) CP - CHICAGO PLENUM <small>*Minimum 4' section</small>


RUN TYPE
S - ___' (STRAIGHT) * L - ___'X ___' (L-SHAPE) U - ___'X ___'X ___' (U-SHAPE) R - ___'X ___' (RECTANGLE/SQUARE) T - ___'X ___' (T-SHAPE) X - ___'X ___' (X-SHAPE) CUS - ___' (CUSTOM LAYOUT - PROVIDE DRAWING) <small>*Individual units available from 2' to 8' Continuous runs available in 1" increments as standard</small>

¹ D250 (250LM/FT) not available in 2' length with DALI, D01, DMX, or DHL2. Specify minimum DC350 for those driver options
² D1000 (1000LM/FT) not available with H90 (90+ CRI)
³ S80 (80+ CRI) not available with 27K
⁴ 347 available in "DIM" 0-10V only (100-1%)
⁵ DALI-2 (Type 6) provided as standard. Please consult factory for DALI (Type 8) options

DELIVERED LUMENS PER FOOT BASED ON 80+ CRI 3500K LED SOURCE

LENS OPTION

FLUSH	DELIVERED LUMENS	SYSTEM WATTS	EFFICACY (LPW)
	250	2.2	112
	500	4.4	112
	750	6.8	110
	1000	9.3	107

ASYMMETRIC	DELIVERED LUMENS	SYSTEM WATTS	EFFICACY (LPW)
	250	2.1	118
	500	4.2	118
	750	6.5	115
	1000	8.9	112

LUMEN OUTPUT MULTIPLIERS

COLOR TEMP	80+ CRI	90+ CRI
2700K	N/A	0.78
3000K	0.97	0.83
3500K	1.00	0.86
4000K	1.02	0.88

HOUSING

Extruded aluminum housing with narrow 1.5" aperture
 Individual units and continuous runs available in 1" increments as standard
 Aluminum trim flange with matte white powder coated finish and minimal 0.400" overlap
 Trimless model features a satin coat mudding flange for seamless ceiling integration
 24-gauge LED reflector with high reflectance white powder coated finish
 Standard polyester powder coated matte white finish

OPTICS

Extruded, satin acrylic lens designed for optimal performance and glare control. Up to 8' continuous
 High performance asymmetric optics available

LISTING

ETL listed and conforms to UL1598 standard. Certified to CSA22.2 NO.250.0. Rated for indoor dry or damp locations
 IC rated - Suitable for direct contact with insulation

WARRANTY

5 Year Warranty on LED and drivers
 Manufacturer 1 Year Warranty for defects in material and workmanship under normal use
 Ambient temperature at fixture should not exceed 25°C

ELECTRICAL

Standard 0-10V, constant current drivers with 100-1% dimming range and >0.9 power factor
 Standard 120/277V universal voltage with several driver options
 Luminaires are pre-wired with factory installed quick connects and branch circuit wiring
 All drivers are integral and easily accessible through luminaire aperture
 Minimum 4' and maximum 6' length for each integral emergency battery. 10W output for 90 minutes

LED SYSTEM

Proprietary LED system with color consistency <3 SDCM
 Available in 27K, 30K, 35K, and 40K
 Standard 80+CRI. Optional 90+CRI
 R9 value of 56 for 90+CRI
 L90 >60,000 hours
 5 Year Warranty

MOUNTING

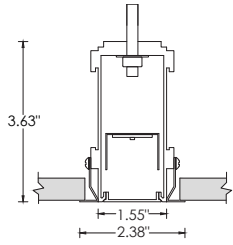
Housing suspended via 1/4" threaded rod or suspension cables (by others)
 Toolless installation with 3G's proprietary mounting system
 Internal, toolless joiner system (latch and hook) easily connects multiple sections together
 LED reflectors remain within each fixture section during installation with 3G's click and lock spring system
 Trim fixture designed for use in drywall, wood, and other architectural ceiling materials
 Trimless fixture designed for use in drywall, mud-in ceiling applications
 Flangeless fixture designed for use in wood ceilings. New construction only
 Suitable for various grid ceiling applications (see mounting details)
 Fixture weight: +/- 2.5 lb/ft

HARD CEILING

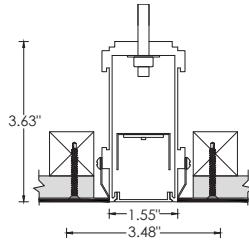
WT - TRIM

XTR - TRIMLESS (DRYWALL)

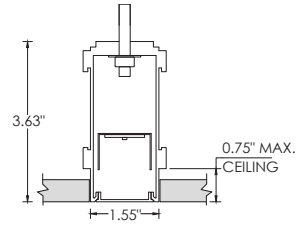
FX - FLANGELESS (NEW CONSTRUCTION)



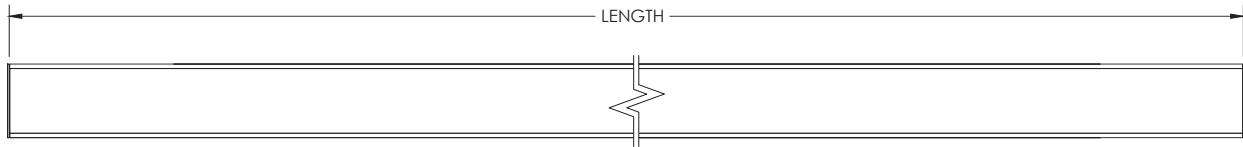
RECOMMENDED CEILING OPENING 2.20"



RECOMMENDED CEILING OPENING 2.25"



RECOMMENDED CEILING OPENING 1.60"

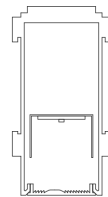
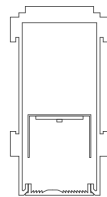
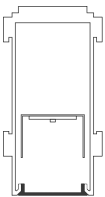


LENS OPTION

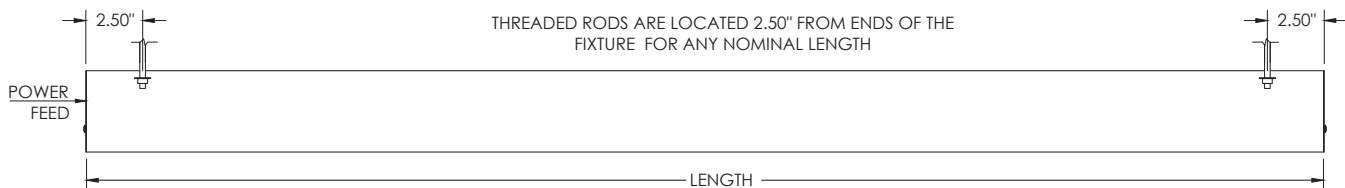
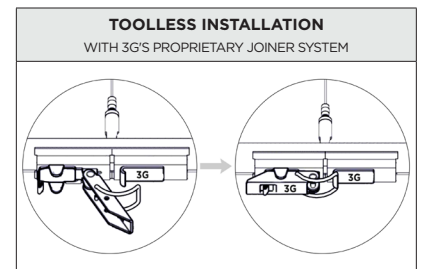
FL - FLUSH

DWSO - WIDESPREAD

DASY - ASYMMETRIC

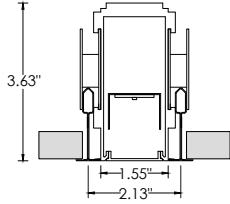


HARD CEILING : MOUNTING DETAILS

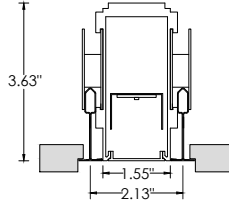


GRID CEILING

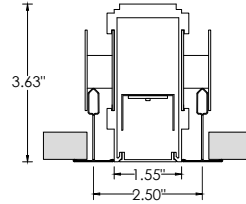
9L - 9/16" LAYIN



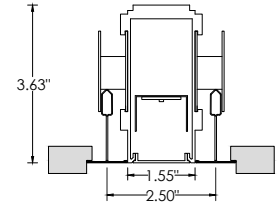
9TG - 9/16" TEGULAR



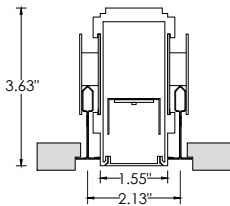
15L - 15/16" LAYIN



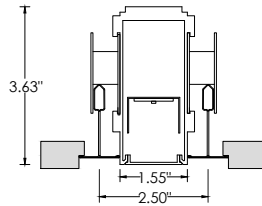
15TG - 15/16" TEGULAR



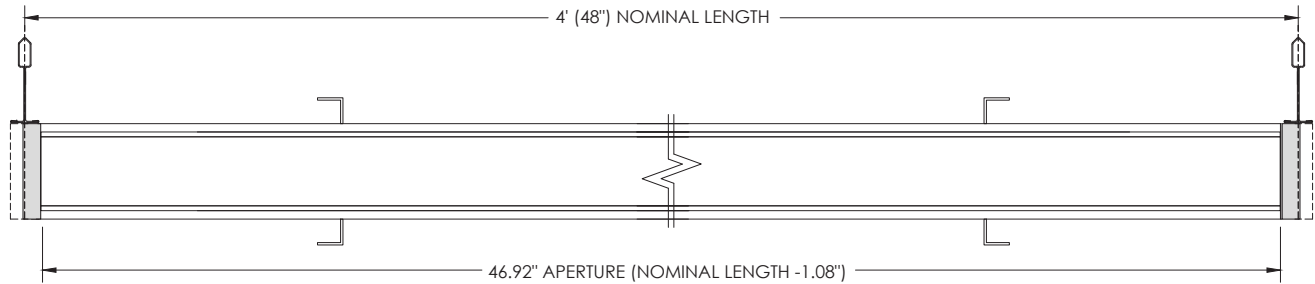
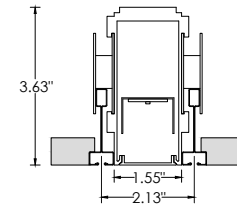
9TP - 9/16" TEGULAR



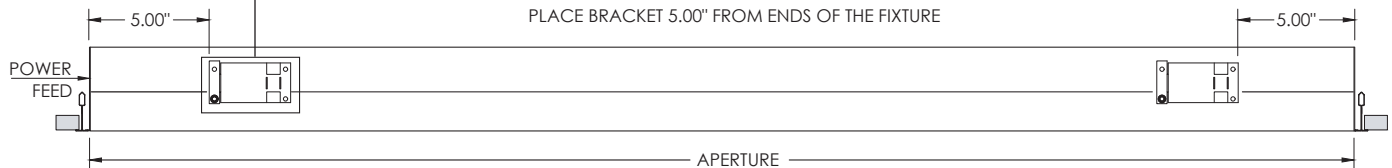
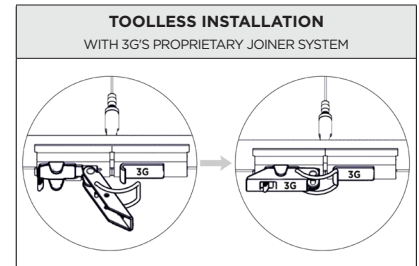
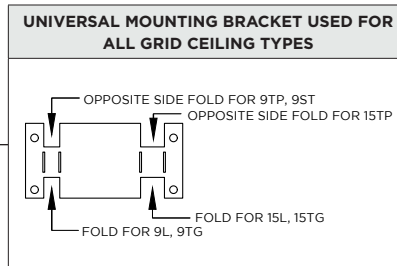
15TP - 15/16" TEGULAR



9ST - 9/16" SLOT TEE TEGULAR

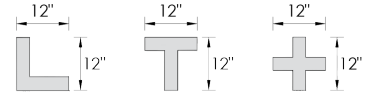


GRID CEILING : MOUNTING DETAILS



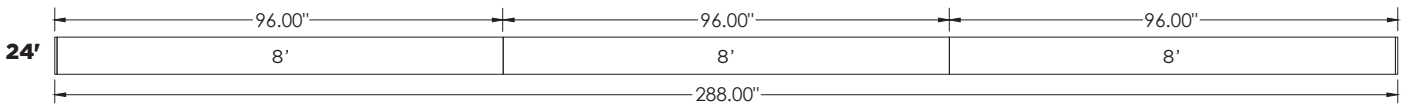
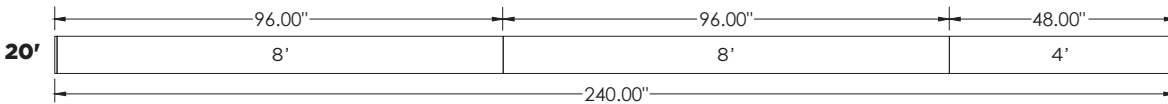
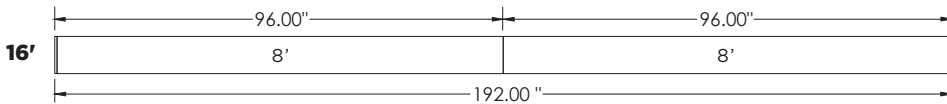
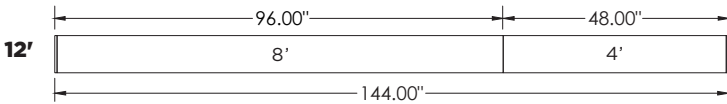
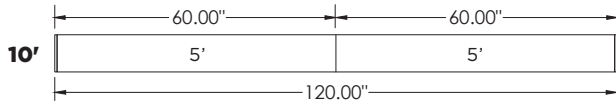
PATTERNS

Specify pattern shape and overall dimensions as shown below
 Patterns are connected with fully illuminated 12"x12" L, T, and X-shaped sections
 Please consult factory for custom patterns and shapes not shown below



L-SHAPE	U-SHAPE	RECTANGLE/SQUARE	T-SHAPE	X-SHAPE
Provide dimensions of AxB Example: L - 6'x8'	Provide dimensions of AxBxC Example: U - 8'x10'x6"	Provide dimensions of AxB Example: R - 10'x8'	Provide dimensions of AxB Example: T - 14'x6'	Provide dimensions of AxB Example: X - 14'x14'

TYPICAL SECTION MOUNTING



NOTE:

Run lengths and configurations not shown are available in 1" increments as standard