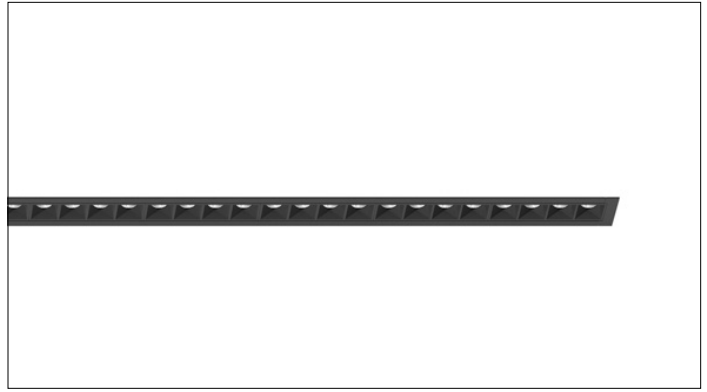




3G-1RMZSL

1.5" RECESSED ZOIE SLOT



Narrow 1.5" aperture with one piece extruded aluminum housing
 High performance, mini downlights delivering up to 1200 lumens per foot
 Features matte black or matte white multi-faceted louvers
 Regressed LED source with enhanced glare control, UGR <16
 Available in individual units or continuous runs in 1' increments
 Suitable for drywall, wood, and various architectural ceilings

PROJECT:		TYPE:	
CATALOG#:		DATE:	QTY:

CAT. NO	LUMEN OUTPUT *	CRI	COLOR TEMP	BEAM ANGLE	VOLTAGE
3G-1RMZSL	D300 - 300 LM/FT D500 - 500 LM/FT D750 - 750 LM/FT D1000 - 1000 LM/FT D1200 - 1200 LM/FT <small>*Delivered Lumens</small>	H90 - 90+ CRI	27K - 2700K 30K - 3000K 35K - 3500K 40K - 4000K	15D - 15° 35D - 35° 55D - 55°	UNV - 120/277V 120 - 120V

DRIVER	FLANGE TYPE	HOUSING FINISH	LOUVER FINISH
DIM - 0-10V (100-1%) LE - PHASE DIM (TRIAC/ELV, 100-1%) ¹ D01 - 0-10V (100-0.1%) DALI - DALI (100-1%) ² DHL2 - LUTRON HI-LUME (1% ECOSYSTEM)	BT - BLACK TRIM WT - WHITE TRIM XTR - TRIMLESS (DRYWALL MUD-IN) FX - FLANGELESS	BK - BLACK WH - WHITE	BLV - BLACK WLW - WHITE

OPTIONS	RUN TYPE
EMC - EMERGENCY CIRCUIT	S - ____' (STRAIGHT) <small>*Individual units available from 2' to 8' Continuous runs available in 1 foot increments only</small>

¹ Forward Phase/Reverse Phase driver available in 120V only
² DALI-2 (Type 6) provided as standard. Please consult factory for DALI (Type 8) options

PERFORMANCE

LUMEN OUTPUT	DELIVERED LUMENS	SYSTEM WATTS	EFFICACY (LPW)
300	332	2.7	124
500	500	4.2	118
750	750	6.5	115
1000	1000	8.9	112
1200	1200	11.0	109

BASED ON 90+ CRI, 3500K, 35D OPTIC
Lumen output and actual wattage may vary +/- 5%

HOUSING

Extruded aluminum housing with narrow 1.5" aperture
Individual units and continuous runs available in 1' increments
Trim flange with powder coated finish and minimal 0.400" overlap
Trimless model features a satin coat mudding flange
Standard polyester powder coated housing available in white and black

OPTICS

1" apertures with matte black or matte white multi-faceted louvers
Regressed LED source for enhanced glare control
Proprietary polycarbonate multi-faceted reflectors
Available in 15°, 35° and 55° with UGR <16

LED SYSTEM

Standard 90+ CRI
Color consistency <2 SDCM
Available in 27K, 30K, 35K, and 40K
L90 > 60,000 hours

MULTIPLIERS

BEAM ANGLE	
15D	0.94
35D	1.00
55D	0.78

COLOR TEMP	
2700K	0.94
3000K	0.97
3500K	1.00
4000K	1.07

ELECTRICAL

Standard 0-10V, constant current drivers
100-1% dimming range and >0.9 power factor
Standard 120/277V universal voltage with several driver options
Integral drivers are easily accessible through luminaire aperture
Luminaires are pre-wired with factory installed quick connects and branch circuit wiring

MOUNTING

Toolless installation with 3G's propriety mounting system
Internal latch and hook easily connects multiple sections together
Housing suspended via ¼" threaded rod or suspension cables (by others)
Trim fixture designed for use in drywall, wood, and other architectural ceilings
Trimless fixture designed for use in drywall, mud-in ceiling applications
Flangeless fixture designed for use in wood ceilings
Fixture weight: +/- 3 lbs/ft

LISTING

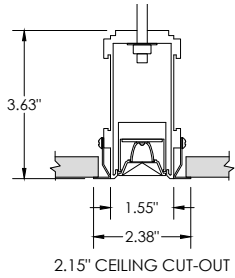
ETL listed and conforms to UL1598 standard
Certified to CSA22.2 NO.250.0.
Rated for indoor dry locations

WARRANTY

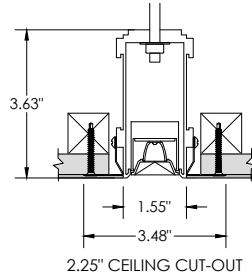
5 year limited warranty
LED system rated for operation in ambient environments up to 25°C

HARD CEILING

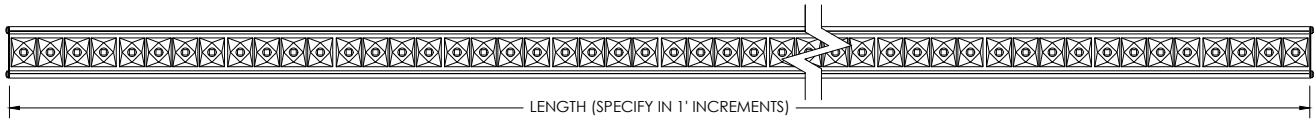
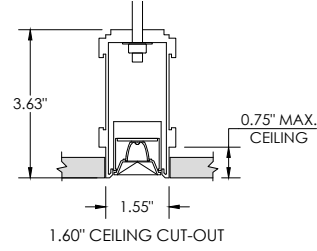
WT - TRIM



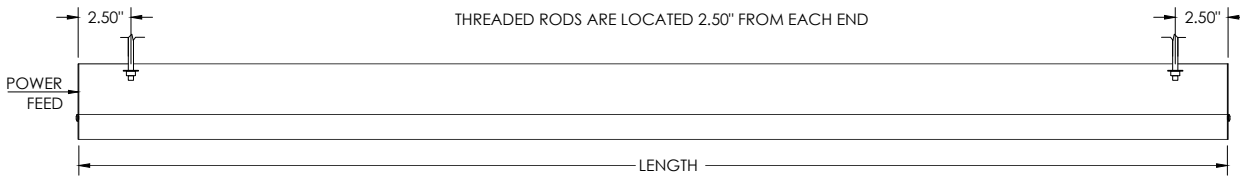
XTR - TRIMLESS



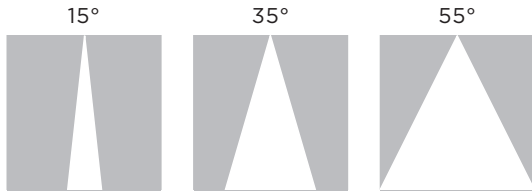
FX - FLANGELESS



MOUNTING DETAILS



BEAM ANGLE



TYPICAL SECTION MOUNTING DETAILS (AVAILABLE IN 1' INCREMENTS AS STANDARD)

