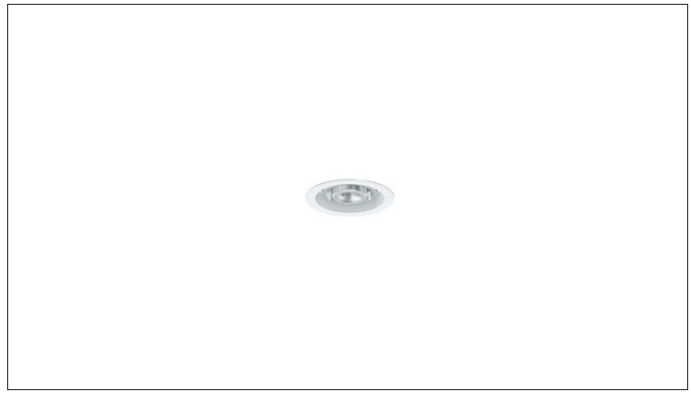




3G-RC1M3-RD
3" ROUND MICRO MADISON



Small 3" round, adjustable Madison downlight
1.2" Regressed LED source with enhanced glare control
Machined aluminum double gimbal with dual axis adjustability
Lumen range up to 1000lm (80+, 90+, and 97+ CRI options)
New construction, IC rated shallow housing
1% dimming standard with several integral driver options

ORDERING INFORMATION

PROJECT:	<input type="text"/>	TYPE:	<input type="text"/>
CATALOG #:	<input type="text"/>	DATE:	<input type="text"/>

CAT. NO	LUMEN OUTPUT	CRI	COLOR TEMP	BEAM ANGLE	VOLTAGE
3G-RC1M3-RD	07 - 700 LUMENS	S80 - 80+ CRI	27K - 2700K	30D - 30°	UNV - 120/277V
	10 - 1000 LUMENS	H90 - 90+ CRI	30K - 3000K	45D - 45°	120 - 120V
		H97 - 97+ CRI ¹	35K - 3500K	65D - 65°	347 - 347V (0-10V ONLY)
			40K - 4000K		

DRIVER	FLANGE TYPE	GIMBAL FINISH	HOUSING INTERIOR
DIM - 0-10V (STANDARD 100-1%)	WT - WHITE (STANDARD)	NG - NATURAL (STANDARD)	BK - BLACK
LE - PHASE DIMMING ² (TRIAC/ELV, 100-1%)	ST - SILVER	BG - BLACK GIMBAL	
D01 - 0-10V (eldoLED, 100-0.1%)	BT - BLACK	WG - WHITE GIMBAL	
DALI - DALI (100-1%) ³	XTR - TRIMLESS		
DHL2 - LUTRON HI-LUME LDE1 (1% ECOSYSTEM)			
DMX - DMX (eldoLED, 100-0%)			

HOUSING TYPE	OPTIONS
SH - SHALLOW HOUSING (IC RATED)	CP - CHICAGO PLENUM EMR - EMERGENCY BATTERY (REMOTE) ⁴

¹ 97+ CRI available in 30K and 35K as standard
² Phase dimming options available in 120V only
³ DALI-2 (Type 6) provided as standard. Consult factory for DALI Type 8 option
⁴ Emergency battery installed remotely by others. Not accessible through the inside of the fixture

MAY 11, 2023





3G-RC1M3-RD

LIGHTING 3" ROUND MICRO MADISON

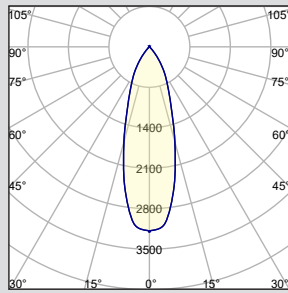
PERFORMANCE CHART BASED ON 65° BEAM ANGLE AND 3500K SOURCE

LUMEN OUTPUT	80+ CRI			90+ CRI			97+ CRI		
	DELIVERED LUMENS	SYSTEM WATTS	EFFICACY (LPW)	DELIVERED LUMENS	SYSTEM WATTS	EFFICACY (LPW)	DELIVERED LUMENS	SYSTEM WATTS	EFFICACY (LPW)
700LMs	729	6.5	112	642	6.5	99	598	6.5	92
1000LMs	1057	9.3	114	930	9.25	101	866	9.25	94

LUMEN OUTPUT ADJUSTMENT FACTORS	CCT	Multiplier
	2700K	0.94
	3000K	0.97
	3500K	1.00
	4000K	1.01

PHOTOMETRY

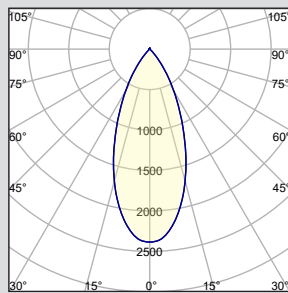
30D - 30° BEAM ANGLE



3G-RC1M3-3RD-10-S80-30D

LUMEN OUTPUT: 1000LMs
 DELIVERED LUMENS 1014LMs
 SYSTEM WATTS: 9.3W
 EFFICACY: 110LPW
 CRI: 80+
 CCT: 3500K

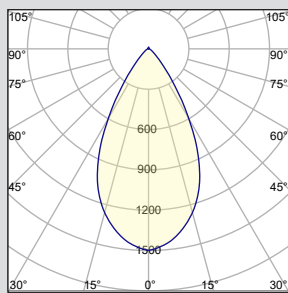
45D - 45° BEAM ANGLE



3G-RC1M3-3RD-10-S80-45D

LUMEN OUTPUT: 1000LMs
 DELIVERED LUMENS 1032LMs
 SYSTEM WATTS: 9.3W
 EFFICACY: 112LPW
 CRI: 80+
 CCT: 3500K

65D - 65° BEAM ANGLE



3G-RC1M3-3RD-10-S80-65D

LUMEN OUTPUT: 1000LMs
 DELIVERED LUMENS 1057LMs
 SYSTEM WATTS: 9.3W
 EFFICACY: 114LPW
 CRI: 80+
 CCT: 3500K



TECHNICAL**HOUSING**

New construction shallow housing is IC rated
Housing fabricated in cold rolled steel. Standard black powder coated finish
Maximum ceiling thickness of 1". Consult factory for modifications
Housings are rated for #12 AWG, (4 in, 4 out), 90°C conductors and through branch wiring

TRIM

Machined aluminum trim flange with matte powder coated finish and minimal 0.400" overlap

TRIMLESS

Mudding flange with integral aluminum blocking support
Machined aluminum insert with seamless ceiling integration

ADJUSTABILITY

Solid, machined aluminum 30mm double gimbal with dual axis adjustability (45°x 40°)

OPTICS

Regressed, 1.2" LED source for enhanced glare control
Proprietary, high performance reflectors. Field replaceable
Available in 30°, 45°, and 65°

ELECTRICAL

Standard 0-10V, constant current drivers with 100-1% dimming range and >0.9 power factor
Standard 120/277V universal voltage drivers. Optional 347V, 0-10V drivers
120V Forward Phase/Reverse Phase driver option with 100-1% dimming range
eldoLED 0-10V driver option available with 100-0.01% dimming range
eldoLED DALI and Lutron EcoSystem driver options available with 100-1% dimming range
DMX driver option available with 100-0% dimming range
All drivers are integral and easily accessible through fixture aperture

LED SYSTEM

Citizen LED module (field replaceable)
Color consistency < 2 SDCM
Standard (80+CRI). Optional (90+ and 97+CRI)
Available in 27K, 30K, 35K, and 40K
L90 >50,000 hours
5 Year Warranty

MOUNTING

Trim fixture designed for use in drywall, wood, acoustic, and other architectural ceilings
Trimless fixture designed for use in drywall, mud-in ceiling applications
Recommended ceiling cut-out for all housing options (3 13/16" diameter)
New construction, IC rated shallow housings ships with bar hangers (14" to 26" extension)

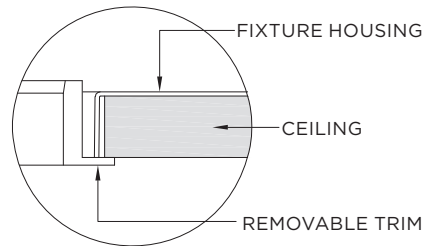
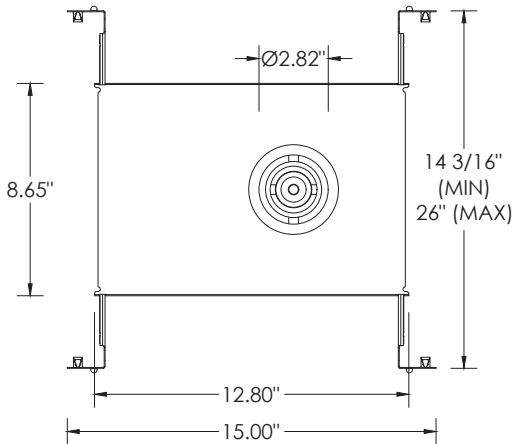
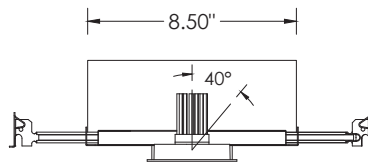
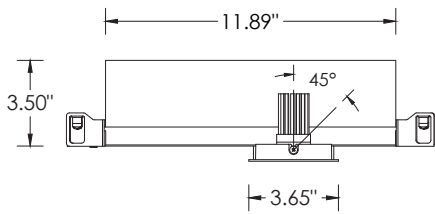
LISTING

ETL listed and conforms to UL1598 standard. Certified to CSA22.2 NO.250.0. Rated for indoor dry or damp locations

WARRANTY

5 Year Warranty on LED and drivers
Manufacturer 1 Year Warranty for defects in material and workmanship under normal use
Ambient temperature at fixture should not exceed 25°C

TRIM HOUSING OPTIONS



TRIMLESS HOUSING OPTIONS

