



3G-SDL33RF70

3.3" DOWNLIGHT CYLINDER
DEEP REGRESS
7" AND 11" HEIGHT



3.3" diameter deep regressed cylinder with upgraded performance
Standard 95+ CRI LED system with performance up to 120 LPW
Delivered lumen range up to 2250lm at 95+ CRI
Deep regressed LED source with enhanced glare control
10° to 60° beam angle options suitable for various applications
Twist and lock extruded aluminum construction with no visible hardware
Companion to 3G's DL33RF70 series downlight

PROJECT:		TYPE:	
CATALOG#:		DATE:	QTY:

CAT. NO	FIXTURE HEIGHT	LUMEN OUTPUT	CRI	COLOR TEMP	BEAM ANGLE
3G-SDL33RF70	7H - 7" HEIGHT *	10 - 1000 LUMENS	H95 - 95+ CRI	27K - 2700K	10D - 10° ¹
	11H - 11" HEIGHT	15 - 1500 LUMENS 20 - 2000 LUMENS 22 - 2250 LUMENS		30K - 3000K 35K - 3500K 40K - 4000K	20D - 20° 40D - 40° 60D - 60°
	*7H available up to 1500lm with integral driver (DIM & LE options)	All lumen outputs are delivered lumens at 95+ CRI			

VOLTAGE	DRIVER	HOUSING FINISH	INSERT FINISH
UNV - 120/277V 120 - 120V 347 - 347V ²	DIM - 0-10V (100-1%) LE - PHASE DIM ³ (TRIAC/ELV, 100-1%) D01 - 0-10V (100-0.1%) DALI - DALI (100-1%) ⁴ DMX - DMX (100-0%) DHL2 - LUTRON HI-LUME LDE1 (1% ECOSYSTEM) RDIM - REMOTE 0-10 (100-1%) RLE - REMOTE PHASE DIM (TRIAC/ELV, 100-1%) Remote drivers supplied with enclosure	WH - WHITE BK - BLACK SV - SILVER CF - CUSTOM RAL COLOR	WI - WHITE BI - BLACK SI - SILVER CI - CUSTOM RAL COLOR

OPTIONS
CFW - WHITE CONDUIT CANOPY CFB - BLACK CONDUIT CANOPY CFS - SILVER CONDUIT CANOPY FXC - SEAMLESS CANOPY OPTION EMR - REMOTE EMERGENCY BATTERY ⁵

****** 3G has upgraded our LED system and overall performance at no additional cost. We now offer 95+CRI as standard. All lumen outputs are delivered lumens. This upgraded LED system is more efficient than our previous 80CRI, 90CRI, and 97CRI options. Please see the last page of this spec sheet to cross-reference old lumen outputs with our new, 95+CRI lumen output options

¹ 10D reflector available up to 2000lm
² 347 available in "DIM" 0-10V only (100-1%)
³ Phase dimming options available in 120V only
⁴ DALI-2 (Type 6) provided as standard. Consult factory for DALI Type 8 option
⁵ Supplied with enclosure with Emergency Battery and driver. Installed remotely by others. Not accessible through fixture aperture

PERFORMANCE

LUMEN OUTPUT	DELIVERED LUMENS	SYSTEM WATTS	EFFICACY (LPW)
1000	1000	8.4	120
1500	1500	12.7	118
2000	2000	17.3	115
2250	2250	19.9	113

BASED ON 95+ CRI, 3500K, 40D OPTIC
Lumen output and actual wattage may vary +/- 5%

MULTIPLIERS

BEAM ANGLE	
20D	1.03
40D	1.03
60D	1.00
90D	0.99

COLOR TEMP	
2700K	0.98
3000K	1.00
3500K	1.00
4000K	1.02

HOUSING

Extruded aluminum housing with powder coated finish

BEVELED INSERT

Cast aluminum beveled insert with matte powder coated finish
3.3" aperture with regressed LED source for enhanced glare control

OPTICS

Proprietary anodized, aluminum reflectors
Beam angle available in 10°, 20°, 40° and 60°
Reflectors are field replaceable (10° reflector not interchangeable)

ELECTRICAL

Standard 0-10V, constant current drivers
100-1% dimming range and >0.9 power factor
Standard 120/277V universal voltage with several driver options
120V Forward Phase/Reverse Phase driver option (100-1%)
Integral drivers are easily accessible through luminaire aperture
Remote drivers supplied with enclosure

LED SYSTEM

Standard 95+ CRI
Color consistency <2 SDCM
Available in 27K, 30K, 35K, and 40K
L90 > 50,000 hours

MOUNTING

All hardware included for mounting to 4" octagonal junction box
Conduit feed cut-out canopy option designed to mount to 4" octagonal junction box
Seamless canopy option mounts to 4" octagonal junction box (new construction only)

EMERGENCY

7W output for 90 minutes (+/- 850lm at 95+ CRI). Title 24 Certified
Remote emergency battery (not accessible through fixture aperture)
Maximum remote mounting distance: 50ft (12AWG) or 25ft (14AWG)
Caution: Emergency Battery utilizes more than one power source and servicing should be performed by qualified personnel

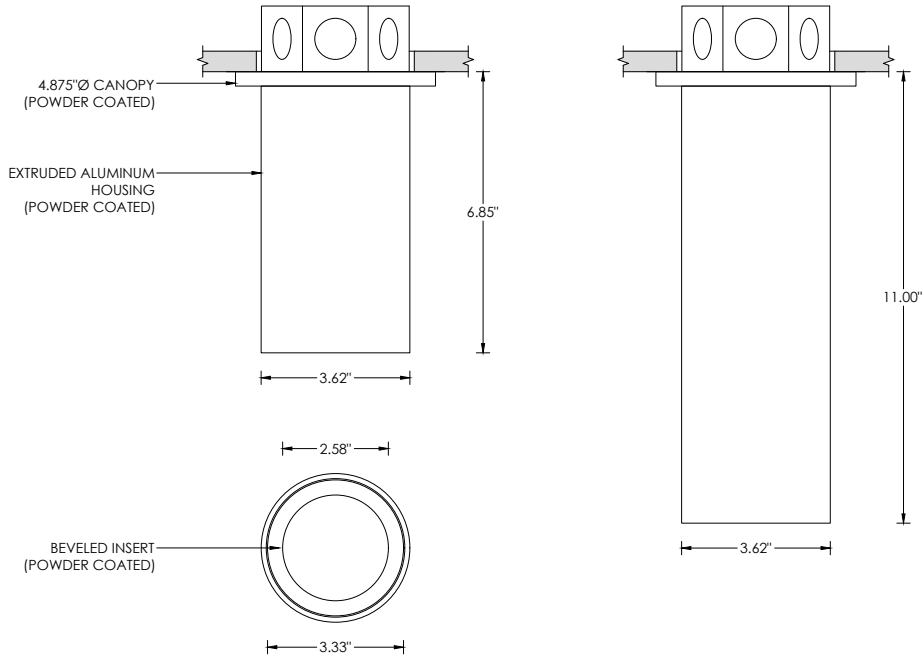
LISTING

ETL listed and conforms to UL1598 standard
Certified to CSA22.2 NO.250.0.
Rated for dry or damp locations

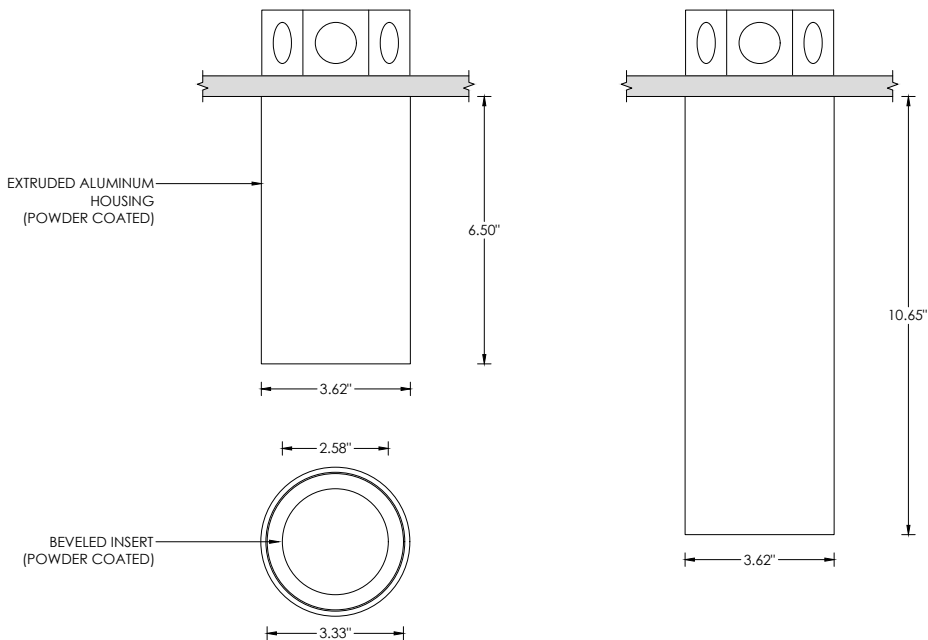
WARRANTY

5 year limited warranty
LED system rated for operation in ambient environments up to 25°C

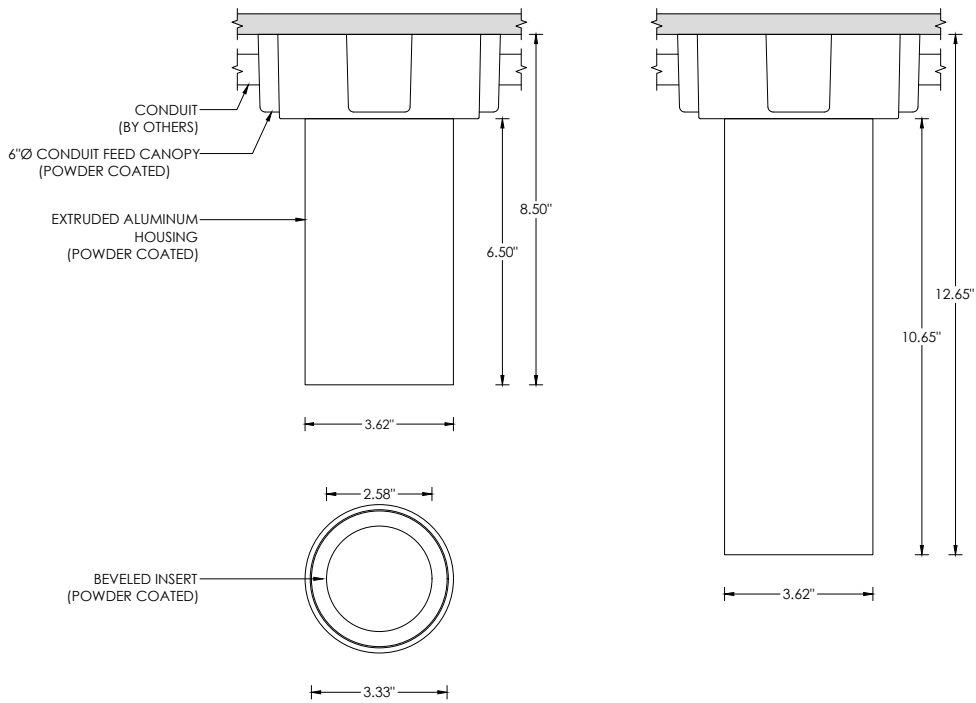
RECESSED 4" OCTAGONAL JUNCTION BOX BY OTHERS
STANDARD CANOPY MOUNT



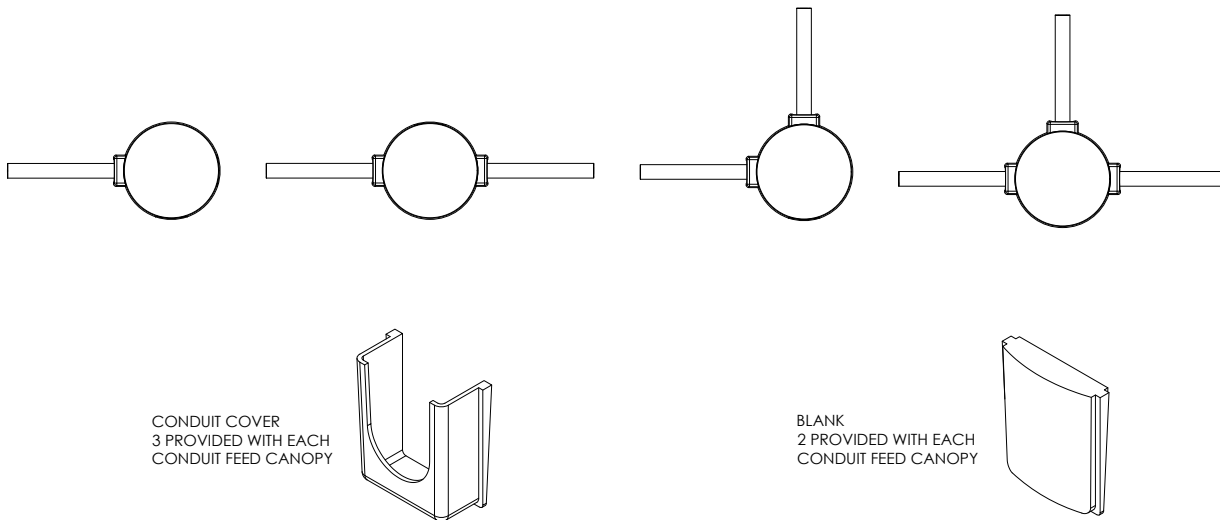
RECESSED 4" OCTAGONAL JUNCTION BOX BY OTHERS
SEAMLESS CANOPY MOUNT (FXC OPTION) FOR NEW CONSTRUCTION ONLY
MUST BE INSTALLED ABOVE CEILING MATERIAL. MAXIMUM 1" CEILING THICKNESS



SURFACE 4" OCTAGONAL X 1.5" DEEP JUNCTION BOX BY OTHERS
CONDUIT FEED CANOPY MOUNT (CFX OPTION)



CONDUIT FEED CANOPY MOUNTING OPTIONS



LUMEN OUTPUT REFERENCE CHART

3G has upgraded our LED system and overall performance at no additional cost. We now offer 95+CRI as standard. All lumen outputs are delivered lumens. This new LED system is more efficient than our previous 80CRI, 90CRI, and 97CRI options. Please use these charts to cross-reference old lumen outputs with our new, 95+CRI lumen output options

80CRI REFERENCE CHARTS

MATCH THE GRADIENT SHADE FROM THE OLD LUMEN OUTPUT CHART TO THE NEW LUMEN OUTPUT OPTION

OLD 80CRI SPECS			
LUMEN OUTPUT	DELIVERED LUMENS	SYSTEM WATTS	EFFICACY (LPW)
1000	1081	10.3	105
1500	1484	14	106
2200	2197	21.9	100

NEW 95+CRI SPECS			
LUMEN OUTPUT	DELIVERED LUMENS	SYSTEM WATTS	EFFICACY (LPW)
1000	1000	8.4	120
1500	1500	12.7	118
2000	2000	17.3	115
2250	2250	19.9	113

90CRI REFERENCE CHARTS

MATCH THE GRADIENT SHADE FROM THE OLD LUMEN OUTPUT CHART TO THE NEW LUMEN OUTPUT OPTION

OLD 90CRI SPECS			
LUMEN OUTPUT	DELIVERED LUMENS	SYSTEM WATTS	EFFICACY (LPW)
1000	951	10.3	92
1500	1306	14	93
2200	1933	21.9	88

NEW 95+CRI SPECS			
LUMEN OUTPUT	DELIVERED LUMENS	SYSTEM WATTS	EFFICACY (LPW)
1000	1000	8.4	120
1500	1500	12.7	118
2000	2000	17.3	115
2250	2250	19.9	113