

3G LIGHTING

3G-PDZ33S

3.3" SQUARE ZOIE PENDANT
7" AND 11" HEIGHT

3.3" square high performance Zoie pendant
Companion to 3G-DZ33S, Square Zoie Downlight
Regressed LED source provides maximum visual comfort, UGR <10
High gloss black or white louvers with proprietary optics and no glare
Extruded aluminum housing with powder coated finish
Lumen range from 1000lm to 2000lm (80+ and 90+ CRI options)
100-1% dimming range standard with integral driver options



PROJECT:		TYPE:	
CATALOG#:		DATE:	QTY:

CAT. NO	FIXTURE HEIGHT	LUMEN OUTPUT (DELIVERED LUMENS)	CRI	COLOR TEMP
3G-PDZ33S	7H - 7" HEIGHT * 11H - 11" HEIGHT *7H up to 1750lm (80+CRI) *7H up to 1500lm (90+CRI) *7H available with remote driver only (RDIM)	10 - 1000 LUMENS 15 - 1500 LUMENS 17 - 1750 LUMENS 20 - 2000 LUMENS Lumen outputs are delivered lumens based on 80+ CRI, 3000K source. See performance chart for all options	S80 - 80+ CRI H90 - 90+ CRI	27K - 2700K ¹ 30K - 3000K 35K - 3500K 40K - 4000K ¹

BEAM ANGLE	VOLTAGE	DRIVER	HOUSING FINISH	LOUVER FINISH
20D - 20° 40D - 40° 60D - 60°	UNV - 120/277V 347 - 347V ²	DIM - 0-10V (100-1%) D01 - 0-10V (100-0.1%) DALI - DALI (100-1%) ³ DHL2 - LUTRON HI-LUME LDE1 (1% ECOSYSTEM) DMX - DMX (100-0%) * RDIM - REMOTE 0-10V (100-1%) *DMX driver only available with rigid stem suspension Remote drivers supplied with enclosure	BK - BLACK WH - WHITE SV - SILVER	BLV - BLACK WLV - WHITE

CANOPY	SUSPENSION TYPE	SUSPENSION LENGTH	OPTIONS
WCN - WHITE (STANDARD) BCN - BLACK SCN - SILVER CFW - WHITE CONDUIT FEED CANOPY CFB - BLACK CONDUIT FEED CANOPY CFS - SILVER CONDUIT FEED CANOPY	WC - WHITE CABLE BC - BLACK CABLE RSW - WHITE RIGID STEM RSB - BLACK RIGID STEM RSS - SILVER RIGID STEM	C60 - 60" CABLE C120 - 120" CABLE S48 - 48" STEM S96 - 96" STEM All suspension options are field cuttable	EMR - EMERGENCY BATTERY ⁴ (REMOTE)

¹ 2700K only available in 90CRI and 4000K only available in 80CRI

² 347 available in "DIM" 0-10V only (100-1%). Not available with 7" height

³ DALI-2 (Type 6) provided as standard. Consult factory for DALI Type 8 option

⁴ Emergency battery installed remotely by others. Not accessible through the inside of the fixture

PERFORMANCE

LUMEN OUTPUT	DELIVERED LUMENS	SYSTEM WATTS	EFFICACY (LPW)
1000	1000	8.4	122.4
1500	1500	13.2	117.4
1750	1750	15.4	116.8
2000	2000	18.4	111.7

BASED ON 80+ CRI, 3000K WITH 20D OPTIC
Lumen output and actual wattage may vary +/- 5%

MULTIPLIERS

COLOR TEMP	80+ CRI
2700K	N/A
3000K	1.00
3500K	0.97
4000K	1.16

COLOR TEMP	90+ CRI
2700K	0.77
3000K	0.86
3500K	0.86
4000K	N/A

BEAM ANGLE	
20D	1.00
40D	0.97
60D	0.94

HOUSING

Extruded aluminum housing with powder coated finish

OPTICS

3.3" aperture with regressed LED source for maximum visual comfort
High gloss black or white louvers with proprietary optics and no glare
Polycarbonate multi-faceted reflectors
Available in 20°, 40° and 60°
UGR <10

LISTING

ETL listed and conforms to UL1598 standard. Certified to CSA22.2 No.250.0. Rated for indoor locations

WARRANTY

5 Year Warranty on LED and drivers
Manufacturer 1 Year Warranty for defects in material and workmanship under normal use
Ambient temperature at fixture should not exceed 25°C

MOUNTING

1/2" diameter rigid stem option with sloped ceiling adapter (field cuttable)
Standard, 18-gauge, 5 conductor single circuit braided power feed (black and white finish)
All hardware included for mounting to 4" octagonal junction box
Canopy provided in white finish as standard
Conduit feed cut-out canopy option designed to mount to 4" octagonal junction box

ELECTRICAL

Standard 0-10V, constant current drivers with 100-1% dimming range and >0.9 power factor
Standard 120/277V universal voltage with several driver options
11" model available with integral drivers that are easily accessible through luminaire aperture
7" model available with remote, 0-10V driver within enclosure.
Maximum remote mounting distance of 100ft (12AWG) or 50ft (14AWG)

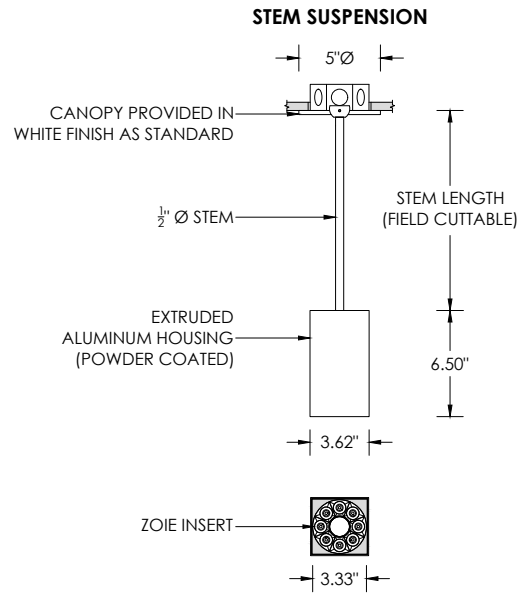
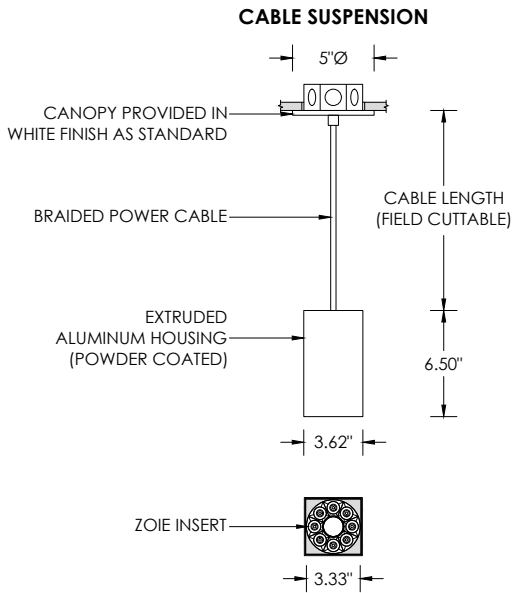
EMERGENCY

Remote emergency battery installed by others (not accessible through fixture aperture)
7W output for 90 minutes (+/- 700lm at 80+ CRI)
CA Title 24 Certified
Maximum remote mounting distance:
50ft (12AWG) or 25ft (14AWG) for fixtures operating at 3000lm or below
30ft (12AWG) or 20ft (14AWG) for fixtures operating above 3000lm
Caution: Emergency Battery utilizes more than one power source and servicing should be performed by qualified personnel

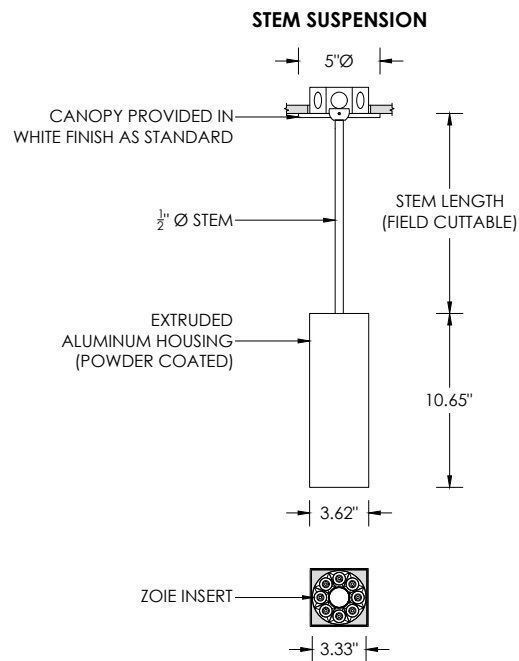
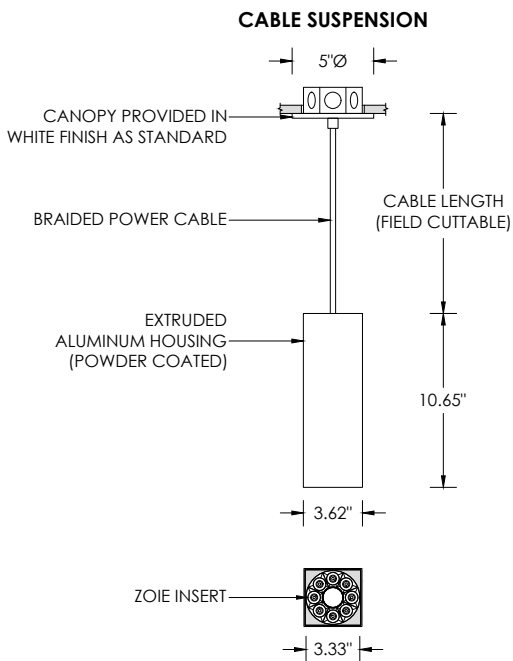
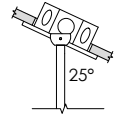
LED SYSTEM

Osram LED source
Color consistency <2 SDCM
80+ and 90+ CRI
Available in 27K, 30K, 35K, and 40K
L90 >60,000 hours
5 year warranty

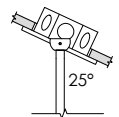
RECESSED 4" OCTAGONAL JUNCTION BOX BY OTHERS
STANDARD CANOPY MOUNT



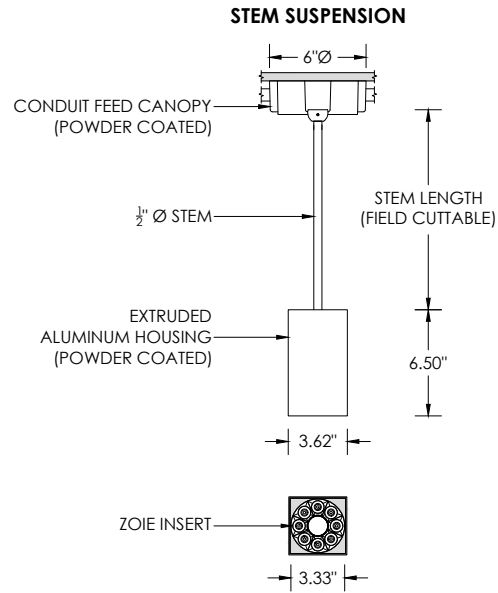
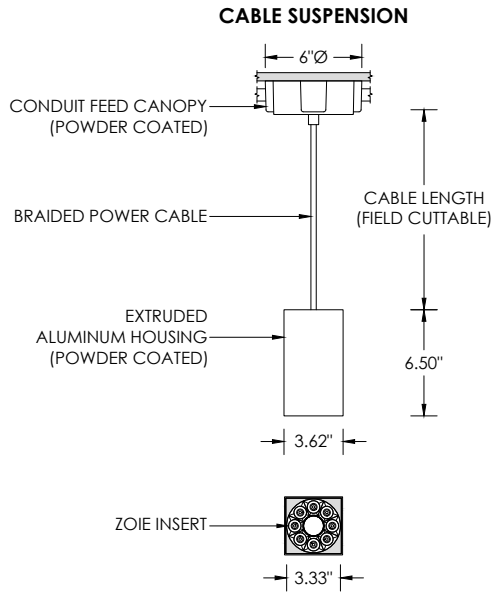
SUITABLE FOR SLOPED CEILING



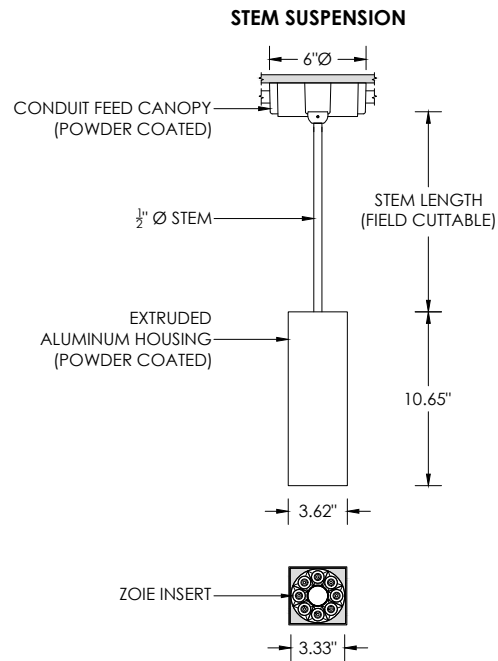
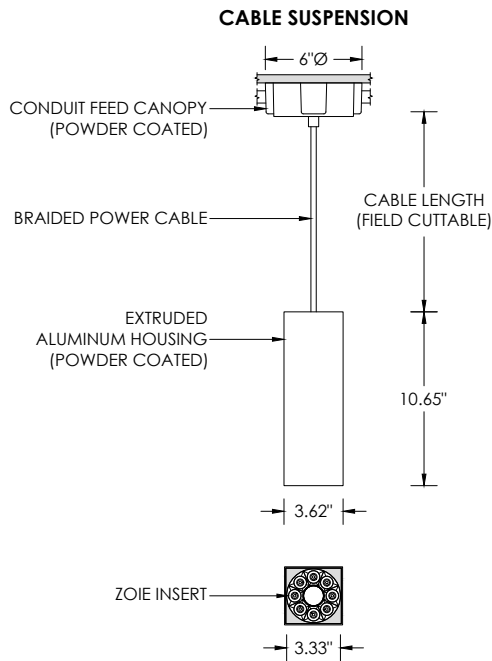
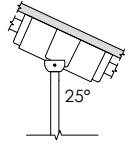
SUITABLE FOR SLOPED CEILING



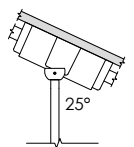
SURFACE 4" OCTAGONAL X 1.5" DEEP JUNCTION BOX BY OTHERS
CONDUIT FEED CANOPY MOUNT (CFX OPTION)



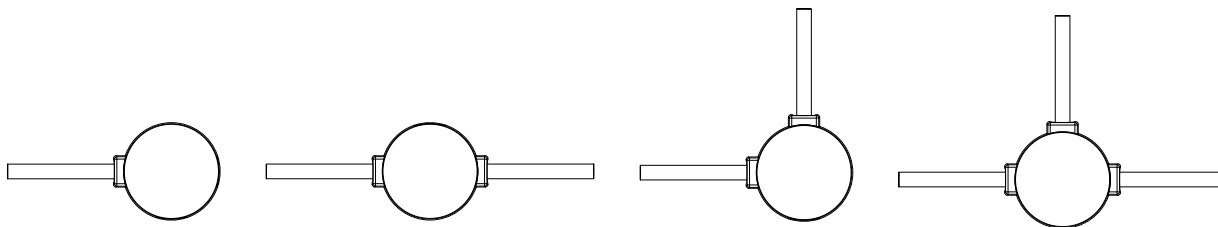
**SUITABLE FOR
SLOPED CEILING**



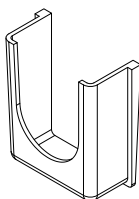
**SUITABLE FOR
SLOPED CEILING**



CONDUIT FEED CANOPY MOUNTING OPTIONS



CONDUIT COVER
3 PROVIDED WITH EACH
CONDUIT FEED CANOPY



BLANK
2 PROVIDED WITH EACH
CONDUIT FEED CANOPY

