

# 3G LIGHTING

## 3G-PDZ33RA

3.3" ADJUSTABLE ZOIE CYLINDER  
3", 7" AND 11" HEIGHT

3.3" diameter, adjustable Zoie cylinder with 0-90° tilt and 360° rotation  
Companion to 3G-DZ33R Round Zoie Downlight  
Regressed LED source provides maximum visual comfort, UGR <10  
High gloss black or white louvers with proprietary optics and no glare  
Extruded aluminum housing with powder coated finish  
Twist and lock construction and no visible hardware  
Lumen range from 1000lm to 2000lm (80+ and 90+ CRI options)  
100-1% dimming range standard with integral driver options



PROJECT:		TYPE:		
CATALOG#:		DATE:	QTY:	
CAT. NO	FIXTURE HEIGHT	LUMEN OUTPUT (DELIVERED LUMENS)	CRI	COLOR TEMP
3G-PDZ33RA	3H - 3" HEIGHT *	10 - 1000 LUMENS	S80 - 80+ CRI	27K - 2700K <sup>1</sup>
	7H - 7" HEIGHT *	15 - 1500 LUMENS	H90 - 90+ CRI	30K - 3000K
	11H - 11" HEIGHT	17 - 1750 LUMENS		35K - 3500K
		20 - 2000 LUMENS		40K - 4000K <sup>1</sup>
*3H & 7H up to 1750lm (80+CRI) *3H & 7H up to 1500lm (90+CRI) *3H & 7H available with remote driver only (RDIM)		Lumen outputs are delivered lumens based on 80+ CRI, 3000K source See performance chart for all options		
BEAM ANGLE	VOLTAGE	DRIVER	HOUSING FINISH	LOUVER FINISH
20D - 20°	UNV - 120/277V	DIM - 0-10V (100-1%)	BK - BLACK	BLV - BLACK
40D - 40°	347 - 347V <sup>2</sup>	DO1 - 0-10V (100-0.1%)	WH - WHITE	WLW - WHITE
60D - 60°		DALI - DALI (100-1%) <sup>3</sup>	SV - SILVER	
		DHL2 - LUTRON HI-LUME (1% ECOSYSTEM)		
		DMX - DMX (100-0%) *		
		RDIM - REMOTE 0-10V (100-1%)		
		*DMX driver only available with rigid stem suspension		
CANOPY	SUSPENSION TYPE	SUSPENSION LENGTH	OPTIONS	
WCN - WHITE (STANDARD)	RSW - WHITE RIGID STEM	S48 - 48" STEM	EMR - EMERGENCY BATTERY <sup>4</sup>	
BCN - BLACK	RSB - BLACK RIGID STEM	S96 - 96" STEM	(REMOTE)	
SCN - SILVER	RSS - SILVER RIGID STEM			
CFW - WHITE CONDUIT FEED CANOPY				
CFB - BLACK CONDUIT FEED CANOPY				
CFS - SILVER CONDUIT FEED CANOPY				
		All suspension options are field cuttable		

<sup>1</sup> 2700K only available in 90CRI and 4000K only available in 80CRI

<sup>2</sup> 347 available in "DIM" 0-10V only (100-1%). Not available with 7" height

<sup>3</sup> DALI-2 (Type 6) provided as standard. Consult factory for DALI Type 8 option

<sup>4</sup> Emergency battery installed remotely by others. Not accessible through the inside of the fixture

## PERFORMANCE

LUMEN OUTPUT	DELIVERED LUMENS	SYSTEM WATTS	EFFICACY (LPW)
1000	1000	8.4	122.4
1500	1500	13.2	117.4
1750	1750	15.4	116.8
2000	2000	18.4	111.7

BASED ON 80+ CRI, 3000K WITH 20D OPTIC  
Lumen output and actual wattage may vary +/- 5%

## MULTIPLIERS

COLOR TEMP	80+ CRI
2700K	N/A
3000K	1.00
3500K	0.97
4000K	1.16

COLOR TEMP	90+ CRI
2700K	0.77
3000K	0.86
3500K	0.86
4000K	N/A

BEAM ANGLE	
20D	1.00
40D	0.97
60D	0.94

## HOUSING

Extruded aluminum housing with powder coated finish  
Twist and lock construction with no visible hardware  
Adjustable housing with 0-90° tilt and 360° rotation features proprietary swivel mechanism

## OPTICS

3.3" aperture with regressed LED source for maximum visual comfort  
High gloss black or white louvers with proprietary optics and no glare  
Polycarbonate multi-faceted reflectors  
Available in 20°, 40° and 60°  
UGR <10

## WARRANTY

5 Year Warranty on LED and drivers  
Manufacturer 1 Year Warranty for defects in material and workmanship under normal use  
Ambient temperature at fixture should not exceed 25°C

## LISTING

ETL listed and conforms to UL1598 standard. Certified to CSA22.2 No.250.0.  
Rated for indoor locations

## MOUNTING

1/2" diameter rigid stem option with sloped ceiling adapter (field cuttable)  
All hardware included for mounting to 4" octagonal junction box  
Conduit feed cut-out canopy option designed to mount to 4" octagonal junction box  
Twist and lock mechanism

## ELECTRICAL

Standard 0-10V, constant current drivers with 100-1% dimming range and >0.9 power factor  
Standard 120/277V universal voltage with several driver options  
11" model available with integral drivers that are easily accessible through luminaire aperture  
3" & 7" models available with remote, 0-10V driver within enclosure.  
Maximum remote mounting distance of 100ft (12AWG) or 50ft (14AWG)

## EMERGENCY

Remote emergency battery installed by others (not accessible through fixture aperture)  
7W output for 90 minutes (+/- 700lm at 80+ CRI)  
CA Title 24 Certified  
Maximum remote mounting distance:  
50ft (12AWG) or 25ft (14AWG) for fixtures operating at 3000lm or below  
30ft (12AWG) or 20ft (14AWG) for fixtures operating above 3000lm  
Caution: Emergency Battery utilizes more than one power source and servicing should be performed by qualified personnel

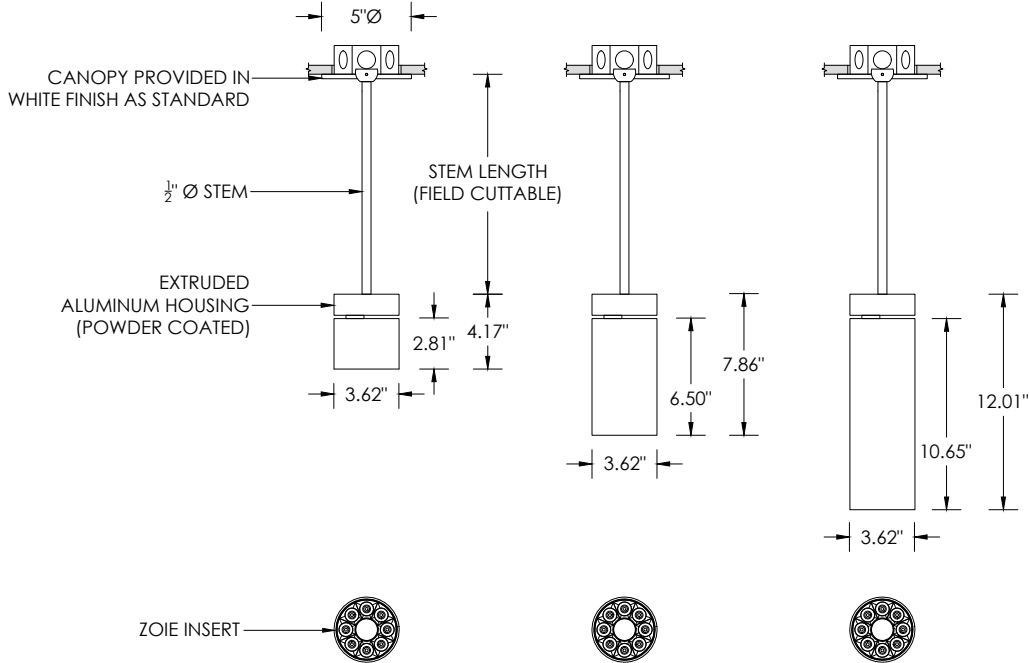
## LED SYSTEM

Osram LED source  
Color consistency <2 SDCM  
80+ and 90+ CRI  
27K, 30K, 35K, and 40K  
L90 >60,000 hours  
5 year warranty

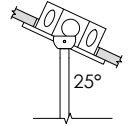
**RECESSED 4" OCTAGONAL JUNCTION BOX BY OTHERS**  
STANDARD CANOPY MOUNT

DRIVER SUPPLIED WITH REMOTE  
ENCLOSURE FOR 3H (3" MODEL ONLY)

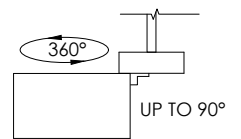
**STEM SUSPENSION**



**SUITABLE FOR  
SLOPED CEILING**

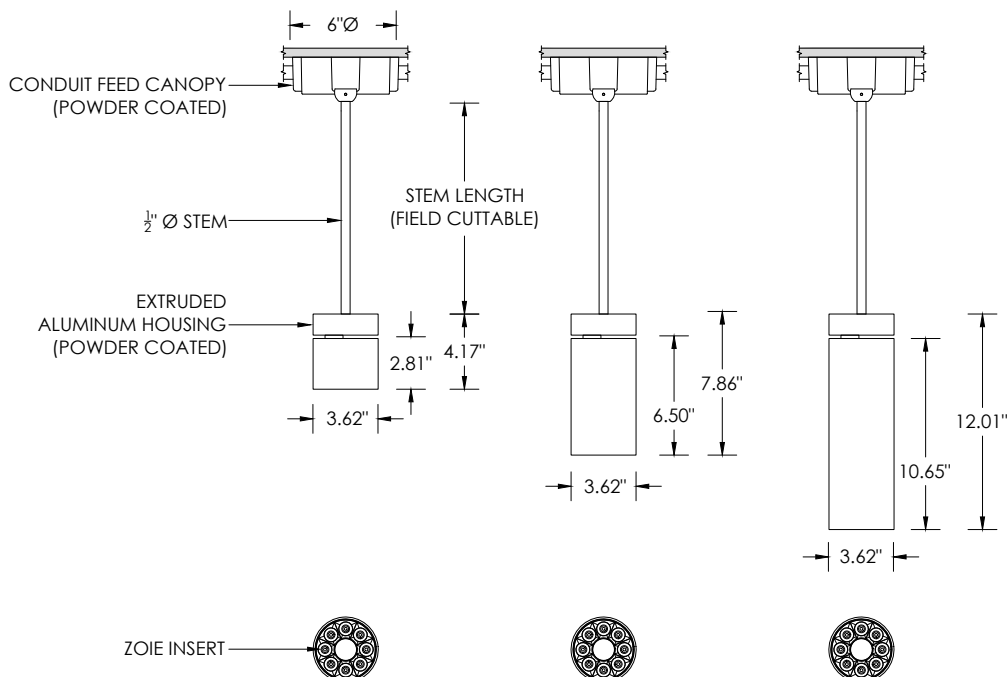


**ADJUSTABILITY**

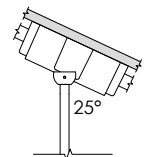


**SURFACE 4" OCTAGONAL X 1.5" DEEP JUNCTION BOX BY OTHERS**  
CONDUIT FEED CANOPY MOUNT (CFX OPTION)

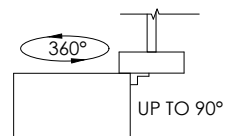
**STEM SUSPENSION**



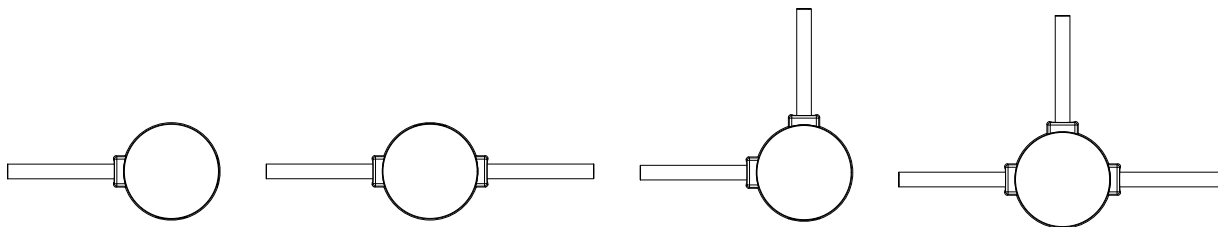
**SUITABLE FOR  
SLOPED CEILING**



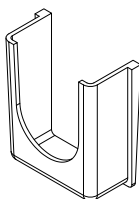
**ADJUSTABILITY**



**CONDUIT FEED CANOPY MOUNTING OPTIONS**



CONDUIT COVER  
3 PROVIDED WITH EACH  
CONDUIT FEED CANOPY



BLANK  
2 PROVIDED WITH EACH  
CONDUIT FEED CANOPY

