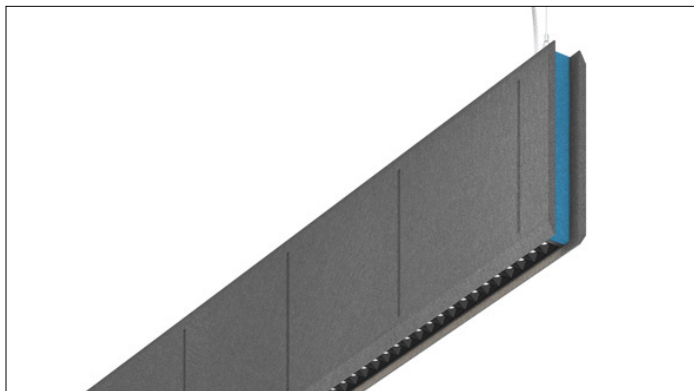


# 3G LIGHTING

## 3G-1PZA-DI

1.5" ACOUSTIC PENDANT  
ZOE DIRECT/INDIRECT

Acoustic body and edge fabricated in 1/2" thick acoustic felt with 20 color options  
1.5" aperture with one piece extruded aluminum housing  
Available in 4', 5', 6', and 8' lengths with 12" or 16" height options  
High performance, mini downlights delivering up to 1200 lumens per foot  
Features matte black or matte white multi-faceted louvers  
LED source with enhanced glare control, UGR <16  
Indirect LED system with performance up to 130 lumens per watt  
Widespread and Asymmetric optics available



<b>PROJECT:</b>		<b>TYPE:</b>	
<b>CATALOG#:</b>		<b>DATE:</b>	<b>QTY:</b>

CAT. NO	FIXTURE HEIGHT	LUMEN OUTPUT (DIRECT)	SYSTEM CRI	SYSTEM COLOR TEMP	BEAM ANGLE (DIRECT)
3G-1PZA-DI	12H - 12" HEIGHT	D300 - 250 LM/FT	H90 - 90+ CRI	27K - 2700K	15D - 15°
	16H - 16" HEIGHT	D500 - 500 LM/FT		30K - 3000K	35D - 35°
	D750 - 750 LM/FT	35K - 3500K		55D - 55°	
	D1000 - 1000 LM/FT	40K - 4000K			
	D1200 - 1200 LM/FT				

LUMEN OUTPUT (INDIRECT)	LENS OPTION (INDIRECT)	VOLTAGE	DRIVER
L250 - 250 LM/FT	FL - FLUSH LENS	UNV - 120/277V	DIM - 0-10V (100-1%)
L500 - 500 LM/FT	WSO - WIDESPREAD OPTIC		DO1 - 0-10V (100-0.1%)
L750 - 750 LM/FT	ASY - ASYMMETRIC OPTIC		DALI - DALI (100-1%) <sup>1</sup>
L1000 - 1000 LM/FT			DHL2 - LUTRON HI-LUME (1% ECOSYSTEM)

HOUSING & LOUVER FINISH	ACOUSTIC COLOR OPTIONS	ACOUSTIC BODY	ACOUSTIC EDGE
BKV - BLACK HOUSING & BLACK LOUVER WHV - WHITE HOUSING & WHITE LOUVER	1CL - SINGLE COLOR (SAME COLOR FOR BODY AND EDGE) 2CL - DUAL COLOR (DIFFERENT COLORS FOR BODY AND EDGE)	BXX - (SEE PAGE 2 FOR ALL COLORS)	EXX - (SEE PAGE 2 FOR ALL COLORS)
		*Option 2CL to be selected with this option	

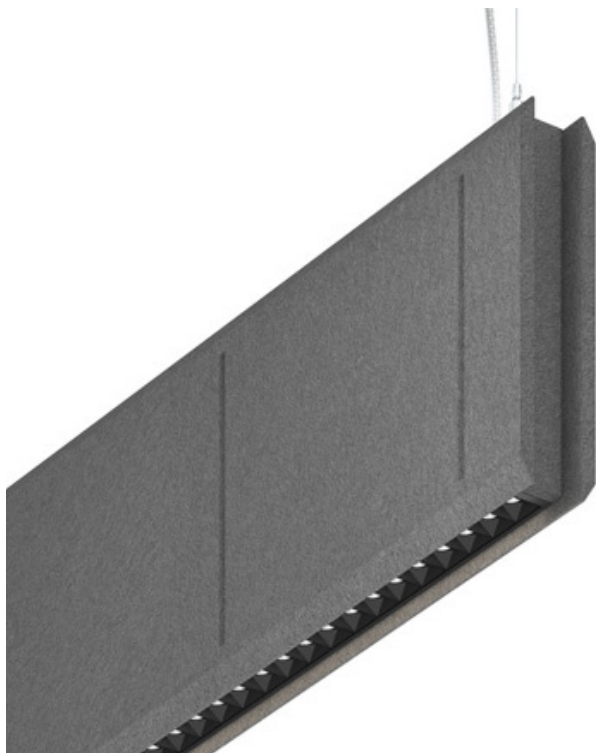
CABLE LENGTH	CIRCUITING	RUN TYPE
60 - 60"	1C - 1 CIRCUIT	S(4') - 4'
120 - 120"	2C - 2 CIRCUITS (SEPARATE DIRECT & INDIRECT)	S(5') - 5' S(6') - 6' S(8') - 8'

<sup>1</sup> DALI-2 (Type 6) provided as standard. Please consult factory for DALI (Type 8) options

**SINGLE COLOR OPTION**

**SPECIFY ONE COLOR FOR THE ACOUSTIC BODY AND EDGE**

Acoustic Body and Edge shown with "BRG" (Rhino grey)

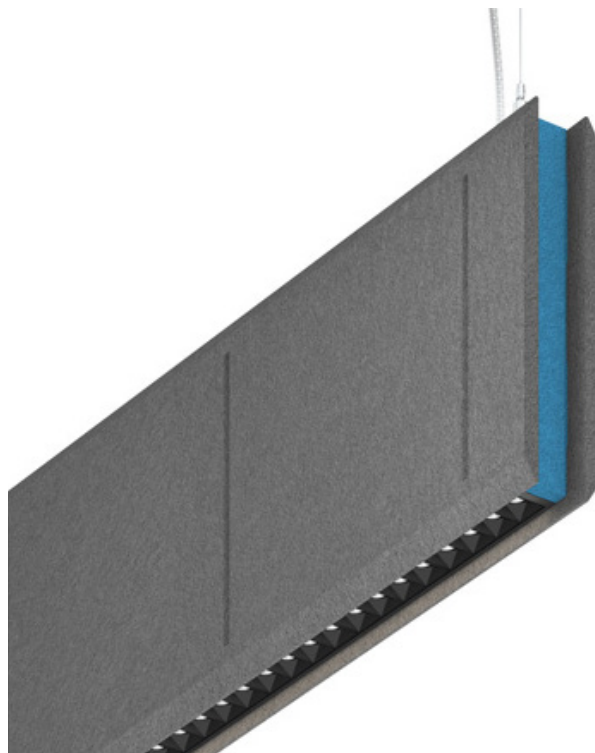


**DUAL COLOR OPTION**

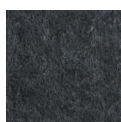
**SPECIFY TWO DIFFERENT COLORS FOR THE ACOUSTIC BODY AND EDGE**

Acoustic Body shown with "BRG" (Rhino grey)

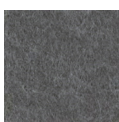
Acoustic Edge shown with "ETU" (Turquoise)



**ACOUSTIC BODY COLORS**



**BSG**  
Steel gray



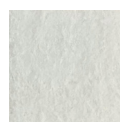
**BRG**  
Rhino gray



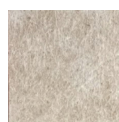
**BCH**  
Charcoal



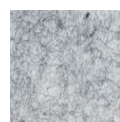
**BBK**  
Black



**BSW**  
Snow white



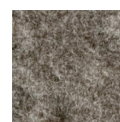
**BBE**  
Beige



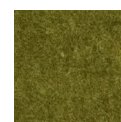
**BLM**  
Light marble



**BAG**  
Ash gray



**BDM**  
Dark marble



**BFG**  
Forest green



**BAP**  
Apple green



**BNG**  
Neon green



**BEG**  
Emerald green



**BYE**  
Yellow



**BOR**  
Orange



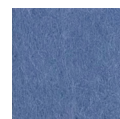
**BRE**  
Red



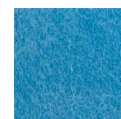
**BGP**  
Grape prune



**BAB**  
Admiral blue

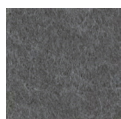


**BSB**  
Sky blue

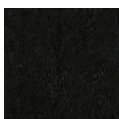


**BTU**  
Turquoise

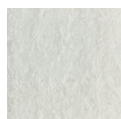
**OPTIONAL EDGE COLORS**



**ERG**  
Rhino gray



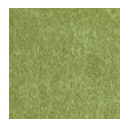
**EBK**  
Black



**ESW**  
Snow white



**EAG**  
Ash gray



**EAP**  
Apple Green



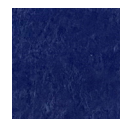
**EYE**  
Yellow



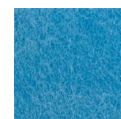
**EOR**  
Orange



**ERE**  
Red



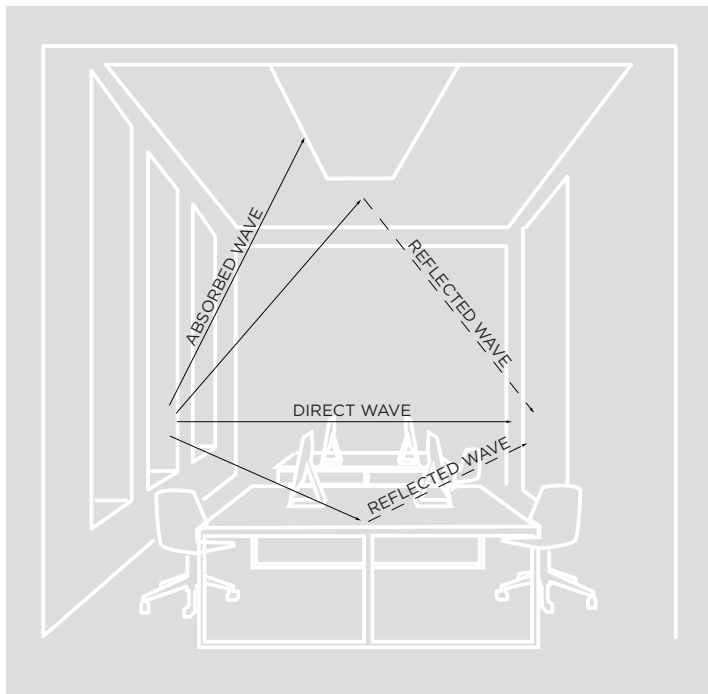
**EAB**  
Admiral blue



**ETU**  
Turquoise

## SOUND WAVE IN A GIVEN SPACE

When a sound wave is emitted from its source, it propels in all directions. The sound carries in a space unless it comes across an obstruction or an absorbing element such as carpeting, or upholstery. Harder materials will enable sound waves to reverberate in the space for a longer period of time. A sound can be direct like a face to face conversation and it can be reflected back from a hard surface.



## REVERBERATION

The persistence of sound after it has been stopped due to multiple reflections from surfaces within a closed space



## T60 : REVERBERATION TIME

The time it takes for a sound to decay by 60 dB once the source of sound has stopped. Reverberation time is the basic acoustical property of a room which depends only on its dimensions and the absorptive properties of its surfaces and contents. An acceptable value for class rooms and libraries ranges between 0.5-0.9 seconds. A suitable value for open offices and conference rooms ranges between 0.7 and 1.25 seconds



## NRC - NOISE ABSORPTION COEFFICIENT

The Noise Reduction Coefficient is a scalar representation of the amount of sound energy absorbed upon striking a particular surface. an NRC of 0 indicates perfect reflection. an NRC of 1 indicates perfect absorption. Higher number equals better performance.



## SABIN

A unit of sound absorption based on one square foot of material. Products with higher Sabin values provide more sound absorption.

## SABIN COUNT

The sum total of the absorption coefficients in a room. Stronger NRC values will deliver higher Sabin counts.

## ACOUSTIC PERFORMANCE

FIXTURE LENGTH	FIXTURE HEIGHT	SABINS PER OBJECT @ A GIVEN FREQUENCY				
		250hz	500hz	1000hz	2000hz	AVERAGE
4FT	12IN	2.30	4.47	7.29	8.50	<b>5.64</b>
4FT	16IN	3.38	5.74	9.05	10.52	<b>7.17</b>
5FT	12IN	2.88	5.58	9.11	10.62	<b>7.05</b>
5FT	16IN	4.22	7.17	11.31	13.14	<b>8.96</b>
6FT	12IN	3.45	6.70	10.94	12.74	<b>8.46</b>
6FT	16IN	5.06	8.60	13.58	15.77	<b>10.75</b>
8FT	12IN	4.60	8.93	14.58	16.99	<b>11.28</b>
8FT	16IN	6.75	11.47	18.10	21.03	<b>14.34</b>

**ZOIE DIRECT OPTICS**

1" apertures with matte black or matte white multi-faceted louvers  
Regressed LED source for enhanced glare control  
Proprietary polycarbonate multi-faceted reflectors  
Available in 15°, 35° and 55° with UGR <16

**INDIRECT OPTICS**

Extruded, satin acrylic lens designed for optimal performance  
High performance asymmetric optics  
Widespread Optic peak intensity at 120°  
Optimal mounting distance at 18" to 30" from ceiling

**HOUSING**

Extruded aluminum housing with 1.5" aperture  
Die cast aluminum endcaps  
24-gauge LED reflector with high reflectance white finish  
Standard polyester powder coated finish

**ACOUSTIC HOUSING**

Acoustic body and edge fabricated in 1/2" thick acoustic felt  
Acoustic NRC value up to 0.9 (see tests results for more details)  
Produced with recycled polyester fiber and +/- 60% from recycled water bottles  
Material is 100% recyclable  
0% VOC's  
Fire rating ASTM E-84 Class A / CAN ULC S102

**ZOIE LED SYSTEM**

Standard 90+ CRI  
Color consistency <2 SDCM  
Available in 27K, 30K, 35K, and 40K  
L90 > 60,000 hours

**INDIRECT LED SYSTEM**

Standard 90+ CRI  
Color consistency <3 SDCM  
Available in 27K, 30K, 35K, and 40K  
R9 value of 56  
L90 > 60,000 hours

**ELECTRICAL**

Standard 0-10V, constant current drivers  
100-1% dimming range and >0.9 power factor  
Standard 120/277V universal voltage with several driver options  
Integral drivers are easily accessible through luminaire aperture

**LISTING**

ETL listed and conforms to UL1598 standard  
Certified to CSA22.2 NO.250.0.  
Rated for indoor dry locations

**WARRANTY**

5 year limited warranty  
LED system rated for operation in ambient environments up to 25°C

## DIRECT PERFORMANCE

LUMEN OUTPUT	DELIVERED LUMENS	SYSTEM WATTS	EFFICACY (LPW)
300	332	2.7	124
500	500	4.2	118
750	750	6.5	115
1000	1000	8.9	112
1200	1200	11.0	109

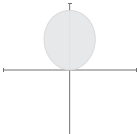
BASED ON 90+ CRI, 3500K, 35D OPTIC  
Lumen output and actual wattage may vary +/- 5%

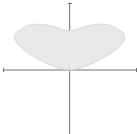
## MULTIPLIERS

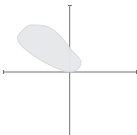
BEAM ANGLE	
15D	0.94
35D	1.00
55D	0.78

COLOR TEMP	
2700K	0.94
3000K	0.97
3500K	1.00
4000K	1.07

## INDIRECT LENS OPTION

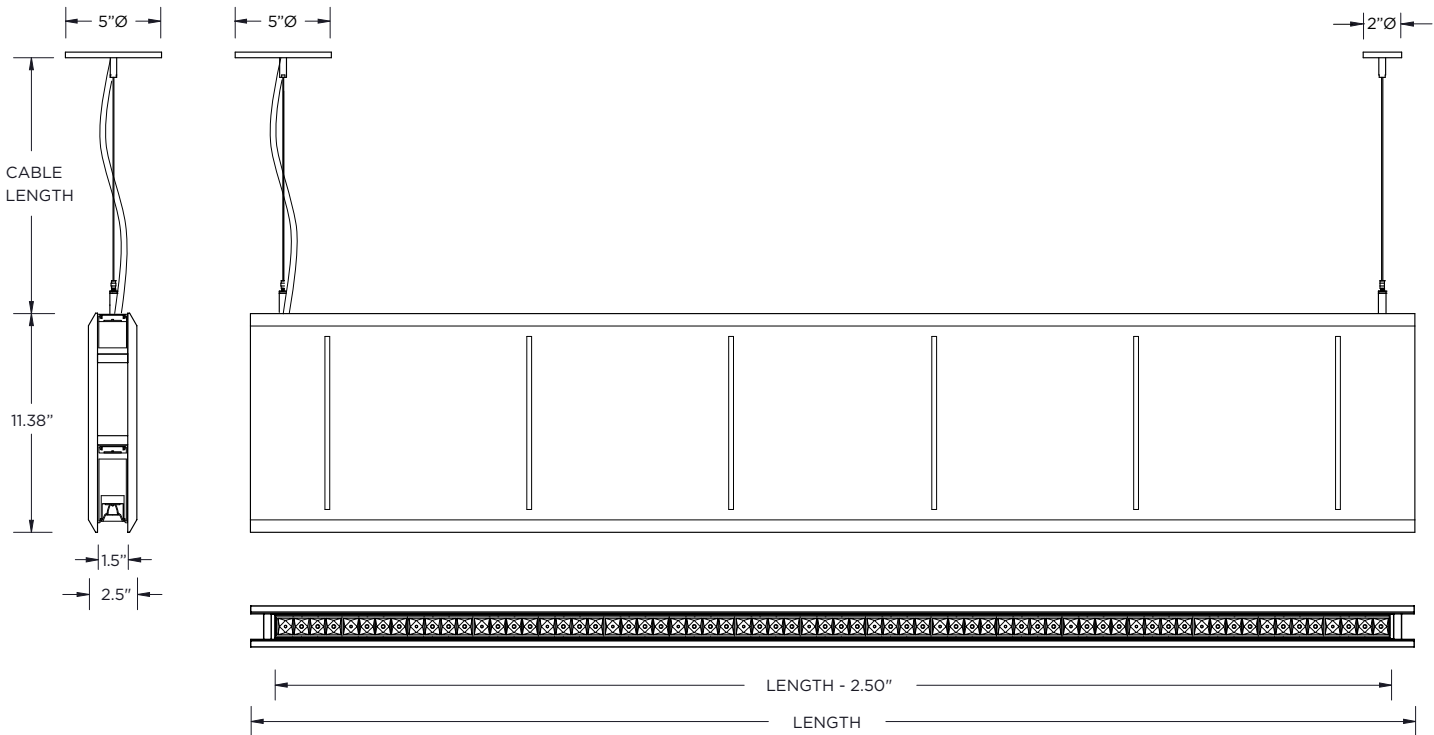
FLUSH	DELIVERED LUMENS	SYSTEM WATTS	EFFICACY (LPW)
	250	1.3	133
	500	2.6	133
	750	4.0	133
	1000	5.4	131

WIDESPREAD	DELIVERED LUMENS	SYSTEM WATTS	EFFICACY (LPW)
	250	1.5	138
	500	2.9	138
	750	4.4	138
	1000	6.0	137

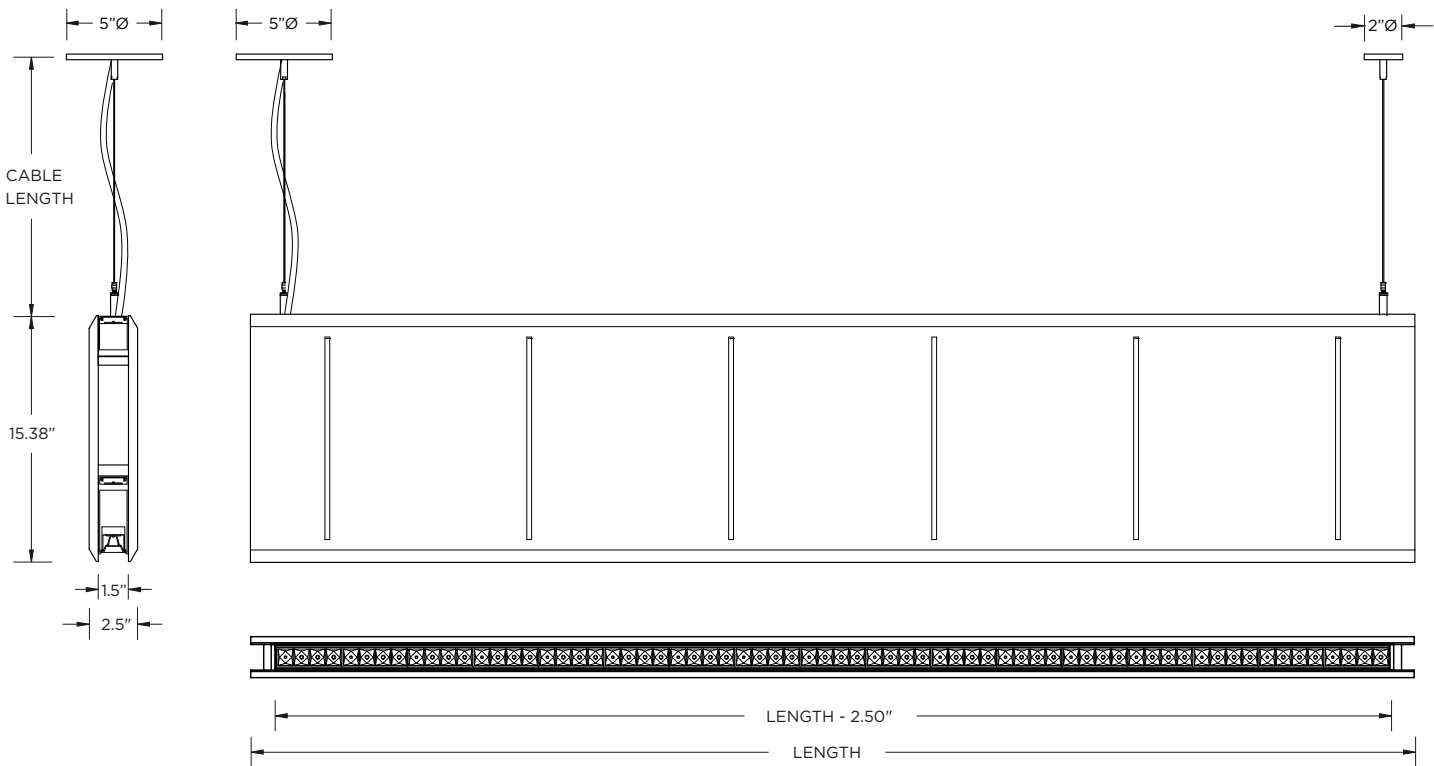
ASYMMETRIC	DELIVERED LUMENS	SYSTEM WATTS	EFFICACY (LPW)
	250	1.4	136
	500	2.9	136
	750	4.4	136
	1000	6.0	133

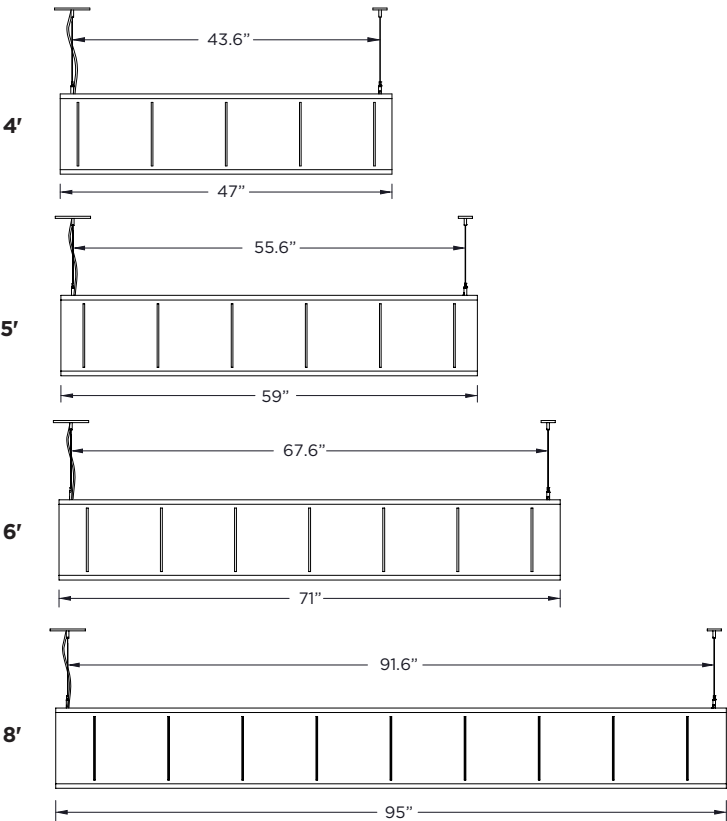
DELIVERED LUMENS PER FOOT BASED ON 90+ CRI, 3500K LED SOURCE  
Lumen output and actual wattage may vary +/- 5%

**12IN HEIGHT**



**16IN HEIGHT**





MOUNTING DETAILS

Adjustable aircraft cable suspension with locking fasteners  
All mounting canopies provided in white finish as standard  
Suitable for various architectural ceilings (see mounting details)  
Fixture weight: 5.75 lbs/ft

