

3G LIGHTING

3G-PQA-D33S

RECTANGLE ACOUSTIC PENDANT
3.3" SQUARE FIXED DOWNLIGHT



Acoustic body fabricated in 1/2" thick acoustic felt
Available in 4' and 8' lengths with 20 color options
3.3" square trimless downlight integration
Standard 95+ CRI LED system with performance up to 133 LPW
Delivered lumen range up to 3000lm at 95+ CRI
Companion to 3G-DL33S pendant and downlight family
Optional felt dust cover provides added acoustic value

PROJECT:		TYPE:	
CATALOG#:		DATE:	QTY:

CAT. NO	FIXTURE SIZE	ACOUSTIC BODY	DOWNLIGHT INSERT	LUMEN OUTPUT	CRI
3G-PQA-D33S	2448 - 24"x48" 2496 - 24"x96"	BXX - (SEE PAGE 2 FOR ALL COLORS)	WI - WHITE BI - BLACK SI - SILVER	10 - 1000 LUMENS 15 - 1500 LUMENS 20 - 2000 LUMENS 25 - 2500 LUMENS 30 - 3000 LUMENS All lumen outputs are delivered lumens at 95+ CRI	H95 - 95+ CRI

COLOR TEMP	BEAM ANGLE	VOLTAGE	DRIVER	CABLE LENGTH
27K - 2700K 30K - 3000K 35K - 3500K 40K - 4000K	20D - 20° ¹ 40D - 40° 60D - 60° 90D - 90° * *90D reflector supplied standard with lens	UNV - 120/277V 120 - 120V 347 - 347V ²	DIM - 0-10V (100-1%) LE - PHASE DIM (TRIAC/ELV, 100-1%) ³ D01 - 0-10V (100-0.1%) ⁴ DALI - DALI (100-1%) ⁴ DHL2 - LUTRON HI-LUME (1% ECOSYSTEM) DMX - DMX (100-0%) ⁴	60" - 60" 120" - 120"

OPTIONS
SF - SOFTENING LENS (SUPPLIED STANDARD) ⁵ SB - SANDBLASTED LENS ⁵ JNR - JOINER KIT ADC - ACOUSTIC DUST COVER

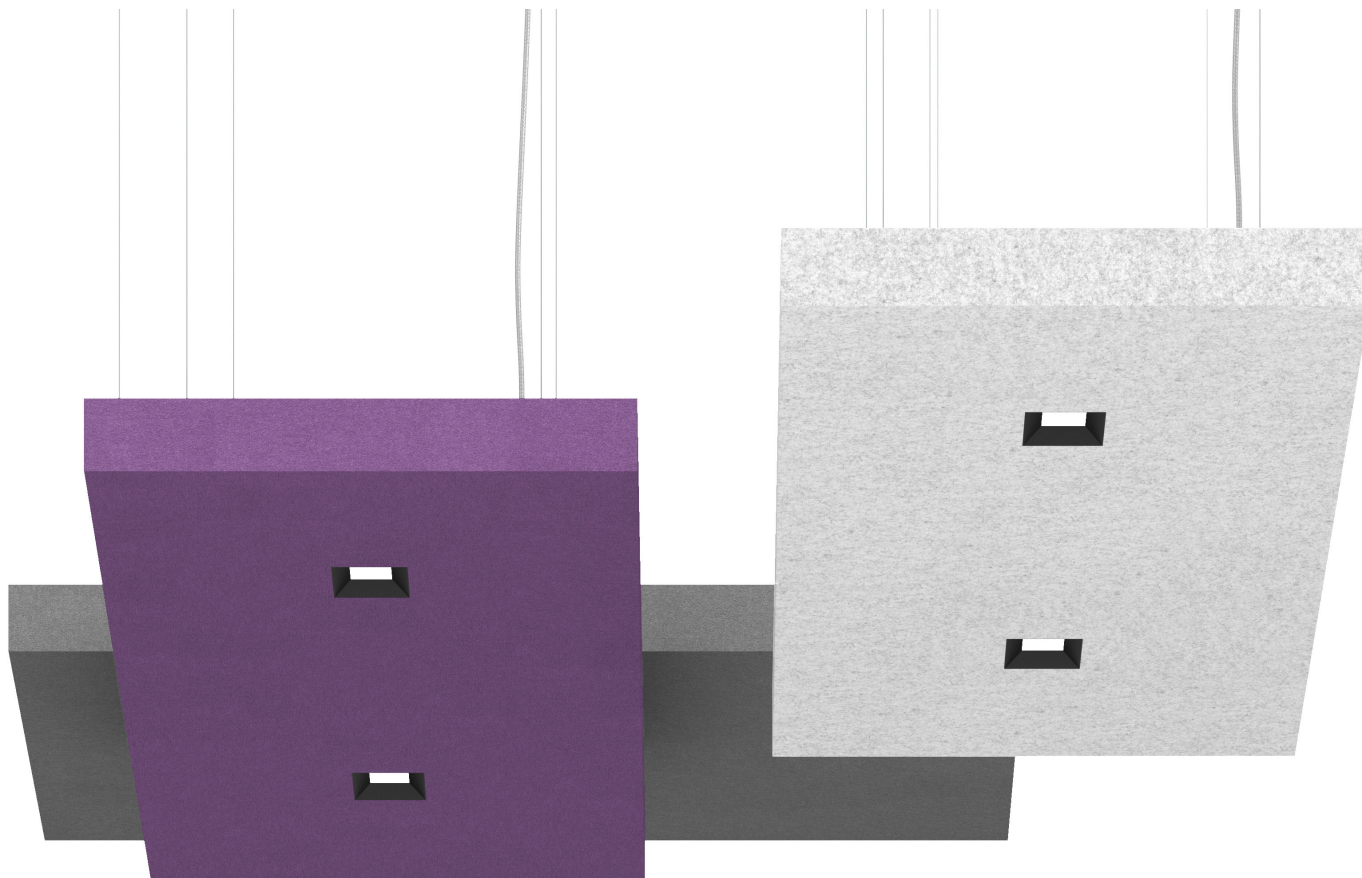
¹ 20D reflector available up to 2000lm

² 347 available in "DIM" 0-10V only (100-1%)

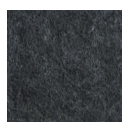
³ Phase dimming options available in 120V only

⁴ D01, DALI and DMX available up to 2200lm. DALI-2 (Type 6) provided as standard. Please consult factory for DALI (Type 8) options

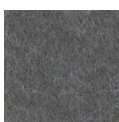
⁵ 90D reflector not available with softening lens and sandblasted lens



ACOUSTIC BODY COLORS



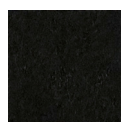
BSG
Steel gray



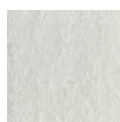
BRG
Rhino gray



BCH
Charcoal



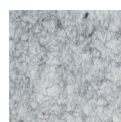
BBK
Black



BSW
Snow white



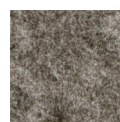
BBE
Beige



BLM
Light marble



BAG
Ash gray



BDM
Dark marble



BFG
Forest green



BAP
Apple green



BNG
Neon green



BEG
Emerald green



BYE
Yellow



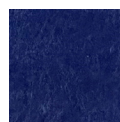
BOR
Orange



BRE
Red



BGP
Grape prune



BAB
Admiral blue



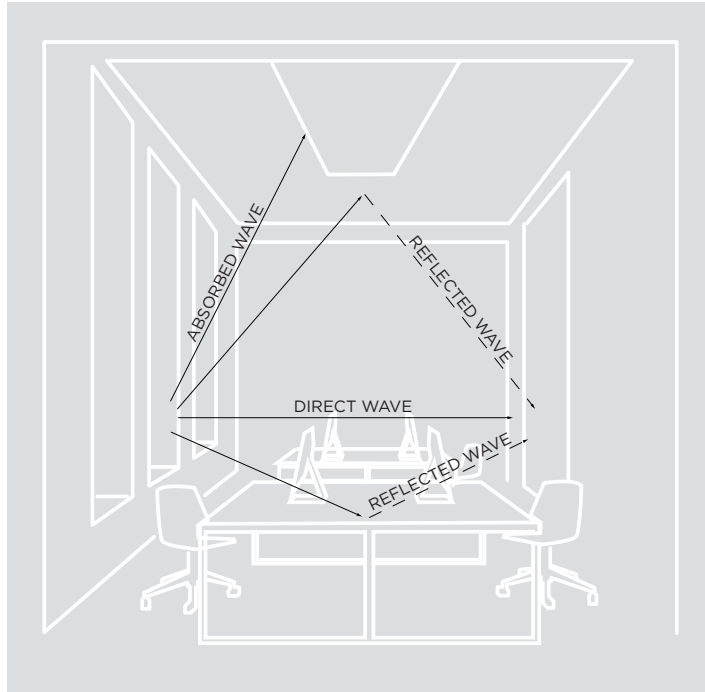
BSB
Sky blue



BTU
Turquoise

SOUND WAVE IN A GIVEN SPACE

When a sound wave is emitted from its source, it propels in all directions. The sound carries in a space unless it comes across an obstruction or an absorbing element such as carpeting, or upholstery. Harder materials will enable sound waves to reverberate in the space for a longer period of time. A sound can be direct like a face to face conversation and it can be reflected back from a hard surface.



REVERBERATION

The persistence of sound after it has been stopped due to multiple reflections from surfaces within a closed space



T60 : REVERBERATION TIME

The time it takes for a sound to decay by 60 dB once the source of sound has stopped. Reverberation time is the basic acoustical property of a room which depends only on its dimensions and the absorptive properties of its surfaces and contents. An acceptable value for class rooms and libraries ranges between 0.5-0.9 seconds. A suitable value for open offices and conference rooms ranges between 0.7 and 1.25 seconds



NRC - NOISE ABSORPTION COEFFICIENT

The Noise Reduction Coefficient is a scalar representation of the amount of sound energy absorbed upon striking a particular surface. an NRC of 0 indicates perfect reflection. an NRC of 1 indicates perfect absorption. Higher number equals better performance.



SABIN

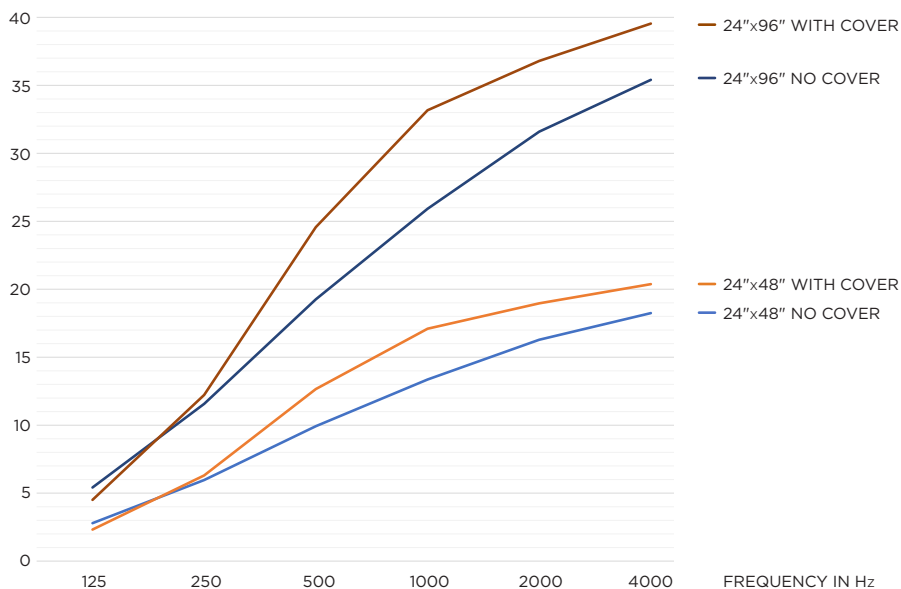
A unit of sound absorption based on one square foot of material. Products with higher Sabin values provide more sound absorption.

SABIN COUNT

The sum total of the absorption coefficients in a room. Stronger NRC values will deliver higher Sabin counts.

ACOUSTIC PERFORMANCE

SABINS PER UNIT



OPTICS

3.3" aperture with regressed LED source for maximum visual comfort
Proprietary anodized, aluminum reflectors are field replaceable
Downlight provided standard with softening lens

ACOUSTIC HOUSING

Acoustic housing fabricated in 1/2" thick acoustic felt
Optional felt dust cover provides added acoustic value
Acoustic NRC value up to 0.9
Produced with recycled polyester fiber and +/- 60% from recycled water bottles
Material is 100% recyclable
0% VOC's
Fire rating ASTM E-84 Class A / CAN ULC S102

MOUNTING

Adjustable aircraft cable suspension with locking fasteners
Standard, 18-gauge, 5 conductor single circuit power feed (clear braided finish)
All mounting canopies provided in white finish as standard
Suitable for various architectural ceilings (see mounting details)
Fixture weight: including cover: +/- 17.5 lbs (48"), +/- 26.5 lbs (96")

LED SYSTEM

Standard 95+ CRI
Color consistency <2 SDCM
Available in 27K, 30K, 35K, and 40K
L90 > 50,000 hours

ELECTRICAL

Standard 0-10V, constant current drivers
100-1% dimming range and >0.9 power factor
Standard 120/277V universal voltage with several driver options
120V Forward Phase/Reverse Phase driver option (100-1%)
Integral drivers are easily accessible through luminaire aperture

LISTING

ETL listed and conforms to UL1598 standard
Certified to CSA22.2 NO.250.0.
Suitable for dry locations

WARRANTY

5 year limited warranty
LED system rated for operation in ambient environments up to 25°C

DOWNLIGHT PERFORMANCE

DL33SF

LUMEN OUTPUT	DELIVERED LUMENS	SYSTEM WATTS	EFFICACY (LPW)
1000	1000	9.3	114
1500	1500	13.6	112
2000	2000	18.4	109
2500	2500	23.9	104
3000	3000	29.9	100

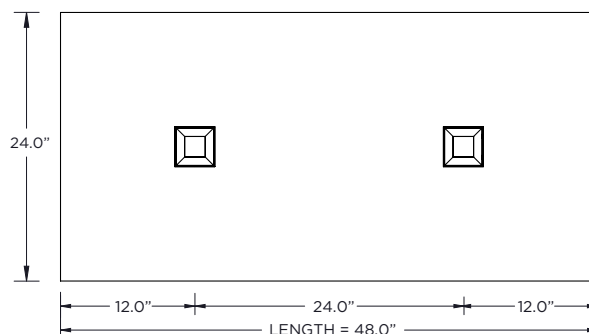
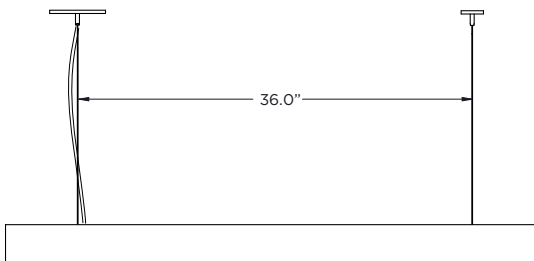
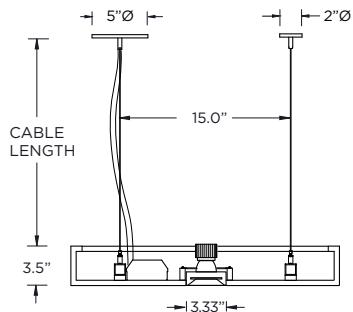
BASED ON 95+ CRI, 3500K, 40D OPTIC WITH SOFTENING LENS
Lumen output and actual wattage may vary +/- 5%

MULTIPLIERS

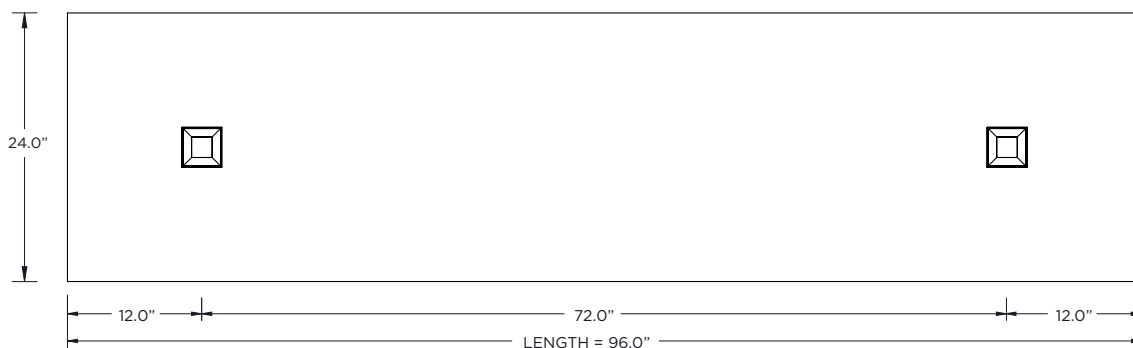
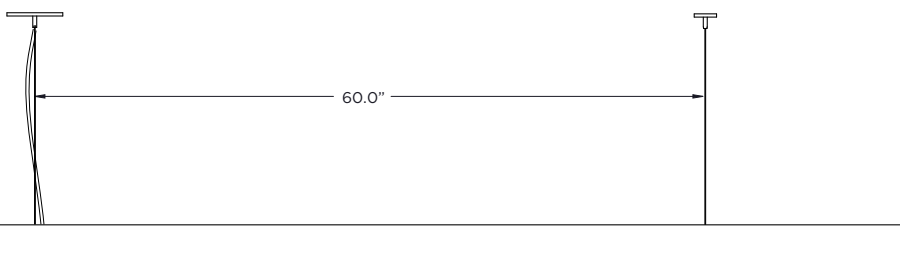
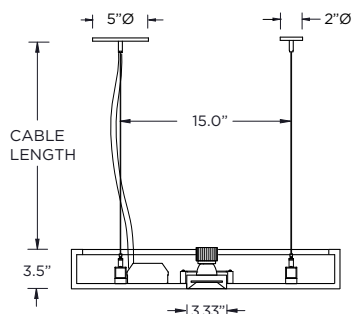
BEAM ANGLE	
20D	1.17
40D	1.00
60D	0.97
90D	0.85

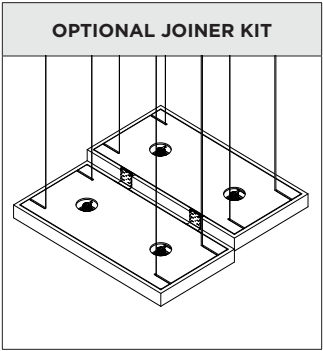
COLOR TEMP	
2700K	0.98
3000K	1.00
3500K	1.00
4000K	1.02

24"x48" PENDANT

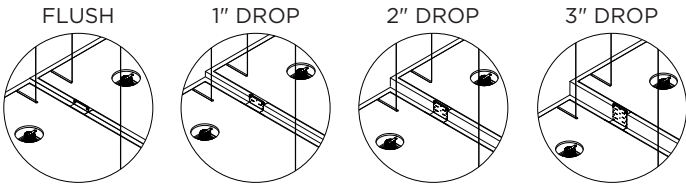


24"x96" PENDANT

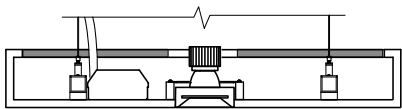
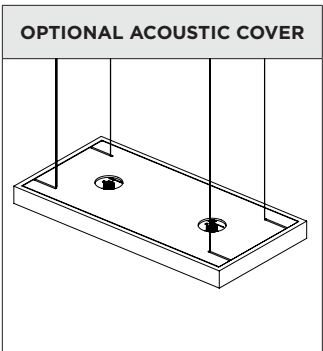




ADJUSTABLE TO 4 HEIGHT OPTIONS



Optional Joiner kit can be installed to align multiple pendants
Brackets attach to the top of each fixture with 4 different mounting positions
Kits ordered separately and installed by others



Optional acoustic dust cover
Made from 1/2" thick acoustic felt
Provides enhanced acoustic value

MOUNTING DETAILS

DRYWALL POWER FEED	DRYWALL NON POWER FEED	CONCRETE CEILING POWER FEED	CONCRETE CEILING NON POWER FEED
<p>OCTAGON JUNCTION BOX (BY OTHERS)</p> <p>5"Ø</p>	<p>2"Ø</p>	<p>OCTAGONAL JUNCTION BOX & MOUNTING SCREWS (BY OTHERS)</p> <p>5"Ø</p>	<p>HANGER BOLT (BY OTHERS)</p> <p>2"Ø</p>