

# 3G LIGHTING

## 3G-DL33RA-SC

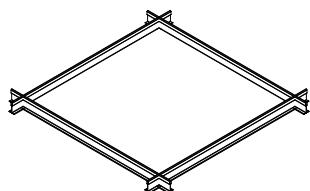
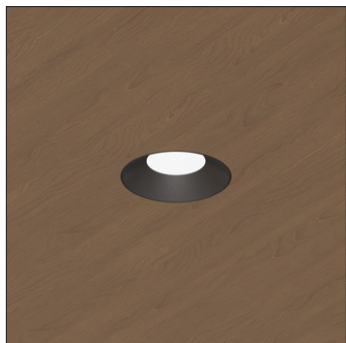
3" ROUND ADJUSTABLE DOWNLIGHT  
SPECIALTY CEILINGS

3" diameter adjustable downlight with upgraded performance  
Designed for integration with various specialty ceilings  
Standard 95+ CRI LED system with performance up to 140 LPW  
Delivered lumen range up to 2500lm at 95+ CRI  
Regressed LED source for enhanced glare control  
10° to 60° beam angle options suitable for various applications  
Title 24 JA8 certified with maximum 1500lm output  
Companion to 3G's Cylinder product family

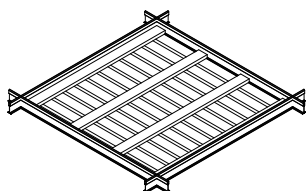


### CEILING TYPES

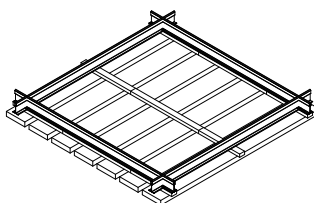
REGULAR PANEL



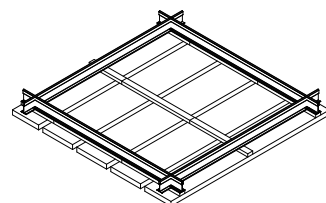
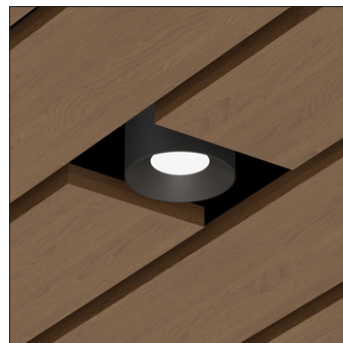
LINEAR REGULAR PANEL



3.25"W LINEAR PANEL



5.25"W LINEAR PANEL



### OPTICS

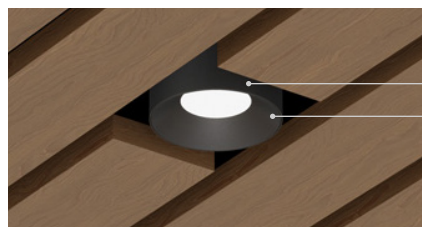


### PERFORMANCE

LUMEN OUTPUT	DELIVERED LUMENS	SYSTEM WATTS	EFFICACY (LPW)
1000	1000	9.3	109
1500	1500	14.0	107
2000	2000	25.4	79
2500	2500	32.0	78

BASED ON 95+ CRI, 3500K, 40D OPTIC WITH SOFTENING LENS  
Lumen output and actual wattage may vary +/- 5%

### STANDARD FINISHES



BLACK COLLAR FINISH  
BLACK BEVELED INSERT



## 3G-DL33RA-SC

### 3" ROUND ADJUSTABLE DOWNLIGHT - SPECIALTY CEILINGS

## ORDERING INFORMATION

PROJECT:		TYPE:			
CATALOG#:		DATE:		QTY:	

CAT. NO	LUMEN OUTPUT	CRI	COLOR TEMP	BEAM ANGLE	VOLTAGE
3G-DL33RA-SC	10 - 1000 LUMENS 15 - 1500 LUMENS 20- 2000 LUMENS 25- 2500 LUMENS  *All lumen outputs are delivered lumens at 95+ CRI	H95 - 95+ CRI	27K - 2700K 30K - 3000K 35K - 3500K 40K - 4000K	10D - 10° <sup>1</sup> 20D - 20° <sup>1</sup> 40D - 40° 60D - 60°	UNV - 120/277V 120 - 120V 347 - 347V <sup>2</sup>

DRIVER	COLLAR FINISH	BEVELED INSERT	HOUSING TYPE
<b>DIM</b> - 0-10V (100-1%) <b>LE</b> - PHASE DIM <sup>3</sup> (TRIAC/ELV, 100-1%) <b>D01</b> - 0-10V (100-0.1%) <b>DALI</b> - DALI (100-1%) <sup>4</sup> <b>DMX</b> - DMX (100-0%) <b>DHL2</b> - LUTRON HI-LUME LDE1 (1% ECOSYSTEM)	<b>BK</b> - BLACK (STANDARD) <b>SV</b> - SILVER	<b>BI</b> - BLACK <b>WI</b> - WHITE <b>SI</b> - SILVER	<b>SH</b> - SHALLOW HOUSING <sup>5</sup> (CP RATED) <b>NC</b> - NEW CONSTRUCTION HOUSING (CP RATED)

## OPTIONS

**SF** - SOFTENING LENS (SUPPLIED STANDARD)  
**SB** - SANDBLASTED LENS  
**LS** - LINEAR SPREAD LENS  
**CP** - CHICAGO PLENUM <sup>6</sup>  
**EMR-** REMOTE EMERGENCY BATTERY (REMOTE) <sup>7</sup>

Maximum 1 optical accessory

- 1 10D and 20D reflector available up to 2000lm
- 2 347 available in "DIM" 0-10V only (100-1%)
- 3 Phase dimming options available in 120V only
- 4 DALI-2 (Type 6) provided as standard
- 5 Shallow Housing available up to 2000lm
- 6 Chicago Plenum option available with Shallow Housing (2000lm max) and New Construction Housing
- 7 Emergency battery installed remotely by others. Not accessible through the inside of the fixture



JA8 (Title 24) Listing available with 1500lm maximum  
Driver options include "DIM" (0-10V) and "LE" (Phase dimming)

## PERFORMANCE

LUMEN OUTPUT	DELIVERED LUMENS	SYSTEM WATTS	EFFICACY (LPW)
1000	1000	9.3	109
1500	1500	14.0	107
2000	2000	25.4	79
2500	2500	32.0	78

BASED ON 95+ CRI, 3500K, 40D OPTIC WITH SOFTENING LENS  
Lumen output and actual wattage may vary +/- 5%

## MULTIPLIERS

BEAM ANGLE	
10D	0.80
20D	1.27
40D	1.00
60D	0.88

COLOR TEMP	
2700K	0.98
3000K	1.00
3500K	1.00
4000K	1.02

## HOUSING

Shallow housing and new construction housing options available  
Maximum ceiling thickness of 1.5". Consult factory for modifications  
Housings rated for #12 AWG (4 in, 4 out), 90°C conductors  
and through branch wiring

## BEVELED INSERT

Cast aluminum beveled insert with matte powder coated finish  
3" aperture with regressed LED source for enhanced glare control

## OPTICS

Proprietary anodized, aluminum reflectors  
Beam angle available in 10°, 20°, 40° and 60°  
Reflectors are field replaceable (10° reflector not interchangeable)  
Softening lens supplied standard  
0° - 40° lockable tilt and 360° lockable rotation (center beam optimization)

## LED SYSTEM

Standard 95+ CRI  
Color consistency <2 SDCM  
Available in 27K, 30K, 35K, and 40K  
L90 > 50,000 hours

## ELECTRICAL

Standard 0-10V, constant current drivers  
100-1% dimming range and >0.9 power factor  
Standard 120/277V universal voltage with several driver options  
Integral drivers are easily accessible through luminaire aperture

## EMERGENCY

7W output for 90 minutes (+/- 765lm at 95+ CRI). Title 24 Certified  
Remote emergency battery (not accessible through fixture aperture)  
Maximum remote mounting distance:  
3000lm or below - 50ft (12AWG) or 25ft (14AWG)  
Above 3000lm - 30ft (12AWG) or 20ft (14AWG)  
Caution: Emergency Battery utilizes more than one power source  
and servicing should be performed by qualified personnel

## MOUNTING

All housing options ship with adjustable C-Channel bar hangers  
Designed for integration with various wood ceiling systems  
Infill panel accessory available with ceiling manufacturer  
(supplied by others)

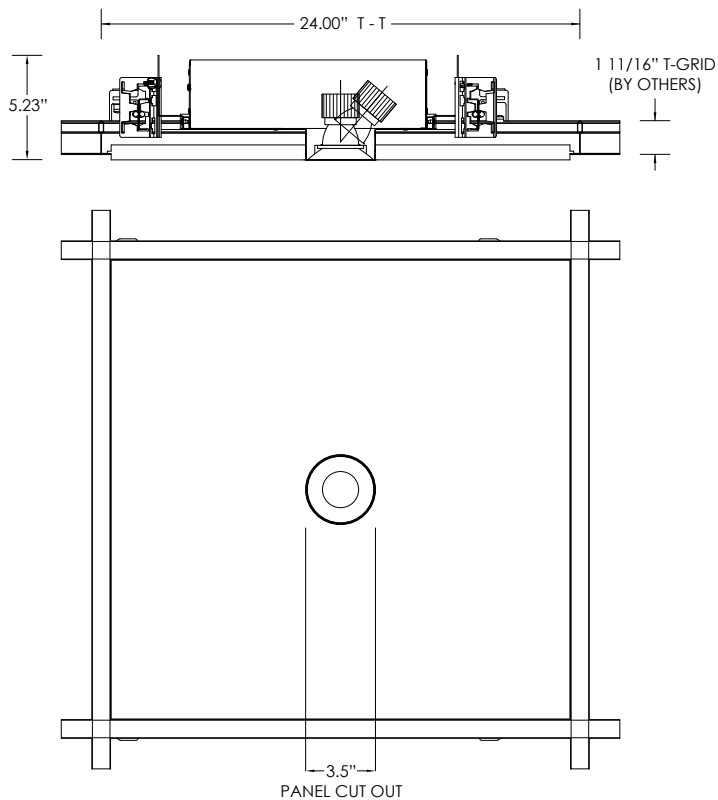
## LISTING

ETL listed and conforms to UL1598 standard  
Certified to CSA22.2 NO.250.0.  
JA8 (Title 24) Listed  
Rated for dry or damp locations

## WARRANTY

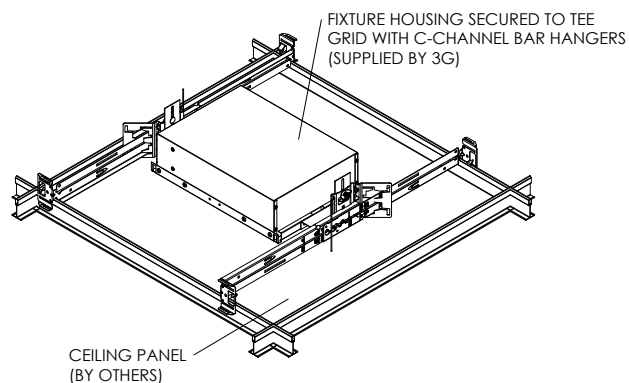
5 year limited warranty  
LED system rated for operation in ambient environments up to 25°C

## REGULAR PANEL (CEILING SYSTEM BY OTHERS)



COMPATIBLE CEILING SYSTEMS	
MANUFACTURER	PART NUMBER
ARMSTRONG	5404F01, 5404F02, 6484F01, 6484F02, 6485F01, 6485F02, 6486F01, 6486F02, 6487F01, 6487F02, 6510F01, 6510F02, 6511F01, 6511F02, 6512F01, 6512F02

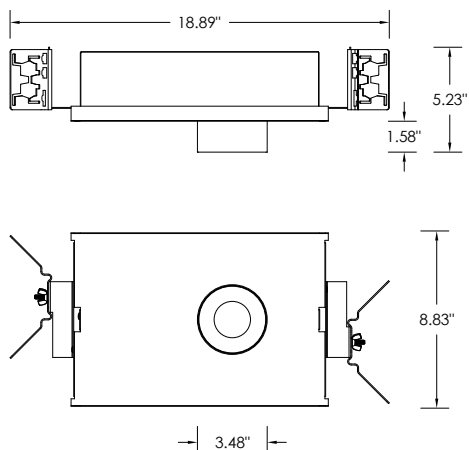
## SH - SHALLOW HOUSING



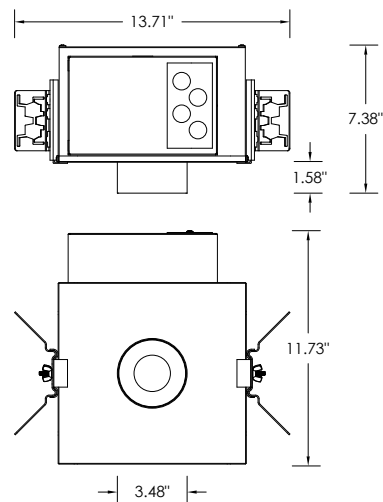
**PLEASE NOTE:** FIXTURE INSTALLATION MUST BE COORDINATED WITH CEILING PANEL INSTALLATION TO ENSURE FIXTURE ACCESSIBILITY CEILING SYSTEM AND 5/8" THICK INFILL PANEL (BY OTHERS)

## HOUSING TYPES

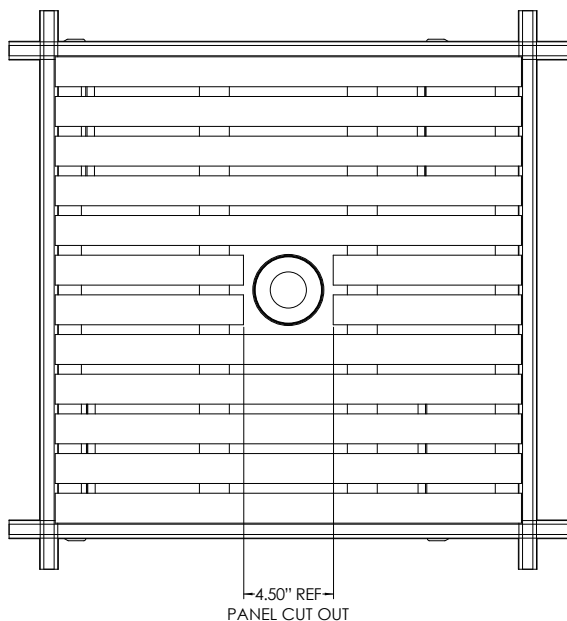
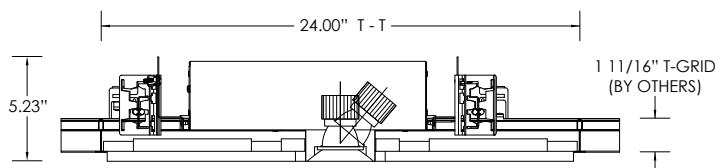
### SH - SHALLOW HOUSING (CP RATED) (2000LM MAX)



### NC - NEW CONSTRUCTION HOUSING (CP RATED)

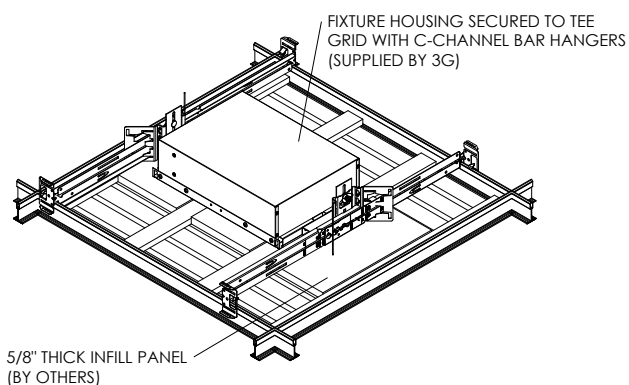


LINEAR TEGULAR (CEILING SYSTEM BY OTHERS)



COMPATIBLE CEILING SYSTEMS	
MANUFACTURER	COMPATIBLE PART NUMBER
ARMSTRONG	6733F51L2T9, 6733F51L4T9, 6733F51L2T5, 6733F51L4T5

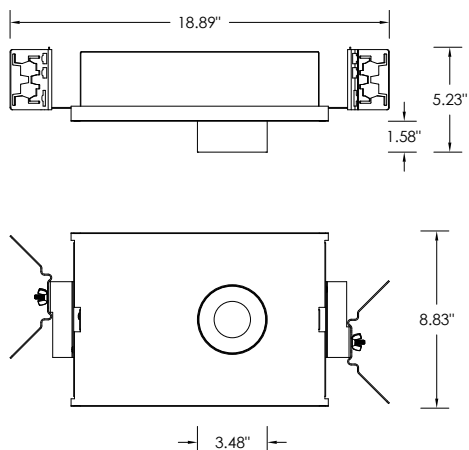
**SH - SHALLOW HOUSING**



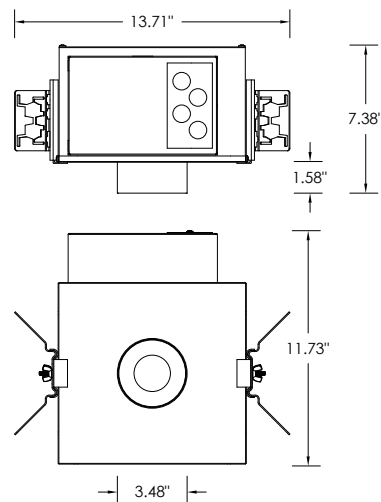
**PLEASE NOTE:** FIXTURE INSTALLATION MUST BE COORDINATED WITH CEILING PANEL INSTALLATION TO ENSURE FIXTURE ACCESSIBILITY CEILING SYSTEM AND 5/8" THICK INFILL PANEL (BY OTHERS)

**HOUSING TYPES**

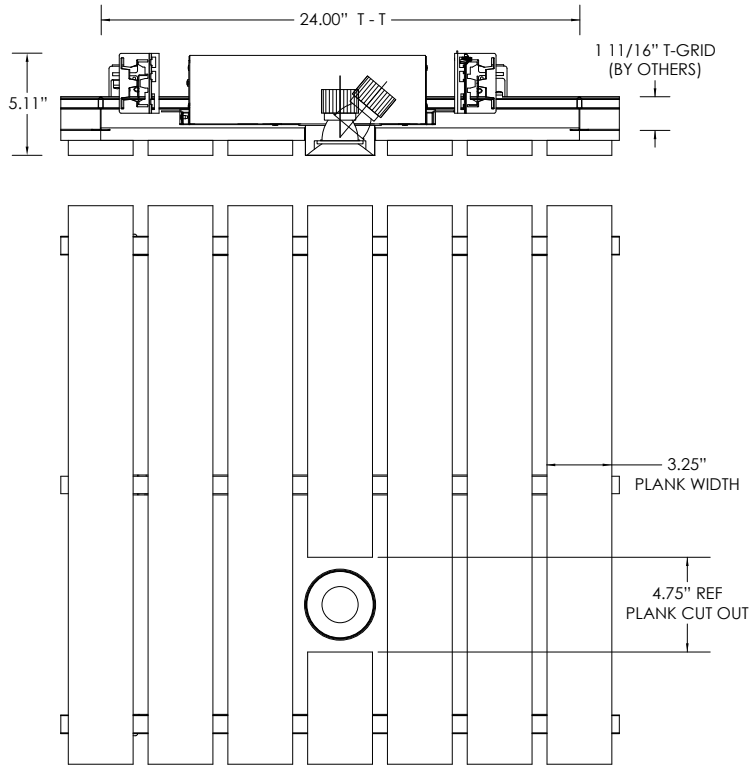
**SH - SHALLOW HOUSING (CP RATED) (2000LM MAX)**



**NC - NEW CONSTRUCTION HOUSING (CP RATED)**

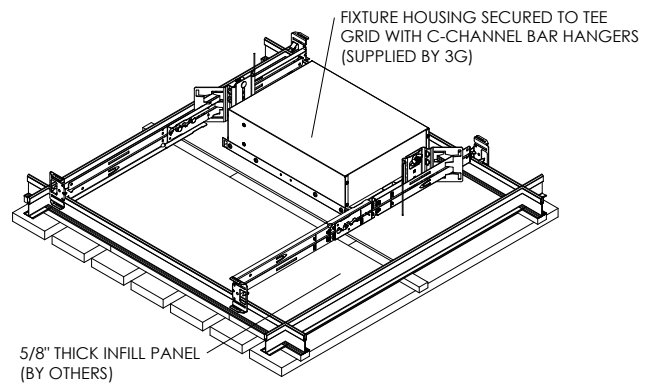


3.25" LINEAR PANEL (CEILING SYSTEM BY OTHERS)



COMPATIBLE CEILING SYSTEMS	
MANUFACTURER	COMPATIBLE PART NUMBER
ARMSTRONG	8176W1
9WOOD	2114-2, 2114-3

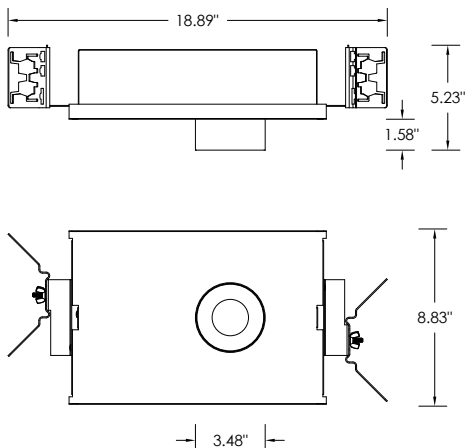
**SH - SHALLOW HOUSING**



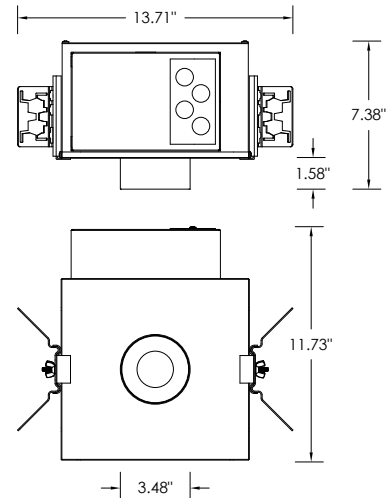
**PLEASE NOTE:** FIXTURE INSTALLATION MUST BE COORDINATED WITH CEILING PANEL INSTALLATION TO ENSURE FIXTURE ACCESSIBILITY CEILING SYSTEM AND 5/8" THICK INFILL PANEL (BY OTHERS)

**HOUSING TYPES**

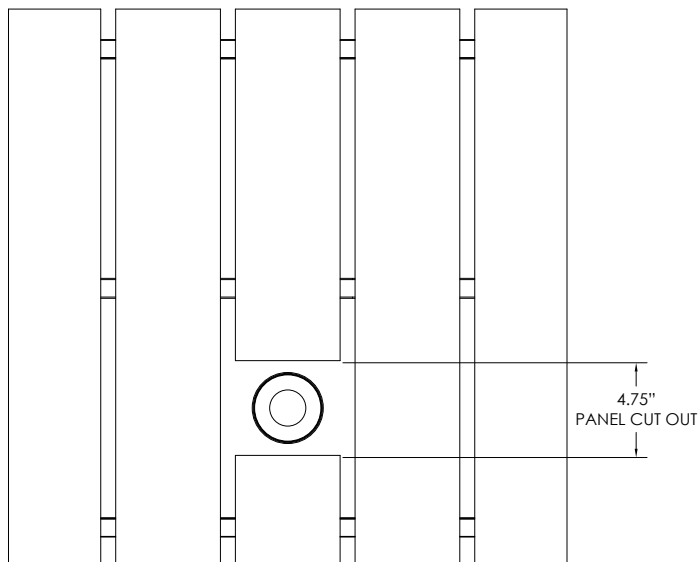
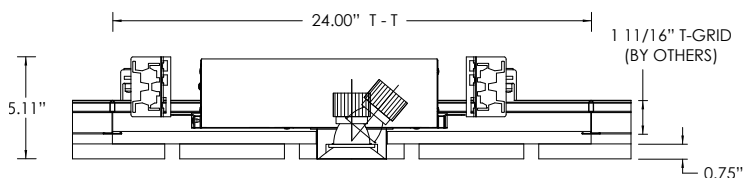
**SH - SHALLOW HOUSING (CP RATED) (2000LM MAX)**



**NC - NEW CONSTRUCTION HOUSING (CP RATED)**

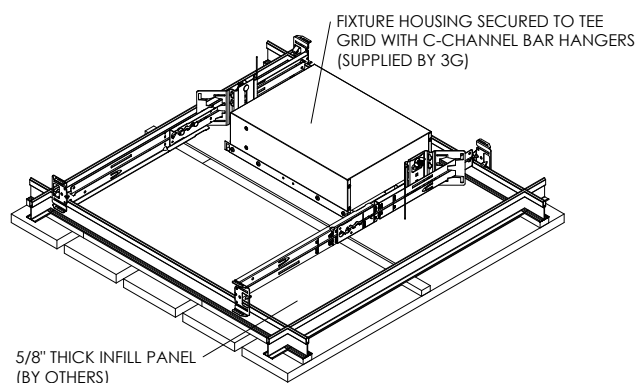


5.25" LINEAR PANEL (CEILING SYSTEM BY OTHERS)



COMPATIBLE CEILING SYSTEMS	
MANUFACTURER	COMPATIBLE PART NUMBER
ARMSTRONG	8177W1
9WOOD	2116-2

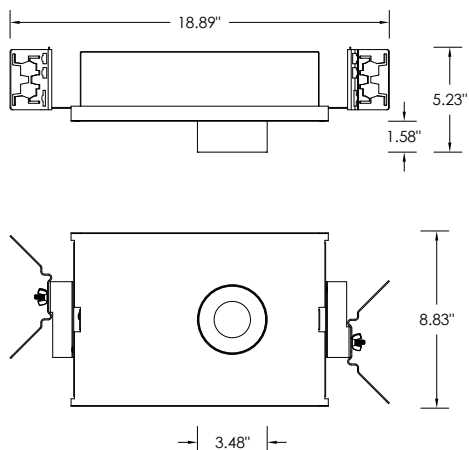
**SH - SHALLOW HOUSING**



**PLEASE NOTE:** FIXTURE INSTALLATION MUST BE COORDINATED WITH CEILING PANEL INSTALLATION TO ENSURE FIXTURE ACCESSIBILITY CEILING SYSTEM AND 5/8" THICK INFILL PANEL (BY OTHERS)

**HOUSING TYPES**

**SH - SHALLOW HOUSING (CP RATED) (2000LM MAX)**



**NC - NEW CONSTRUCTION HOUSING (CP RATED)**

