

# 3G LIGHTING

## 3G-PDL20RF

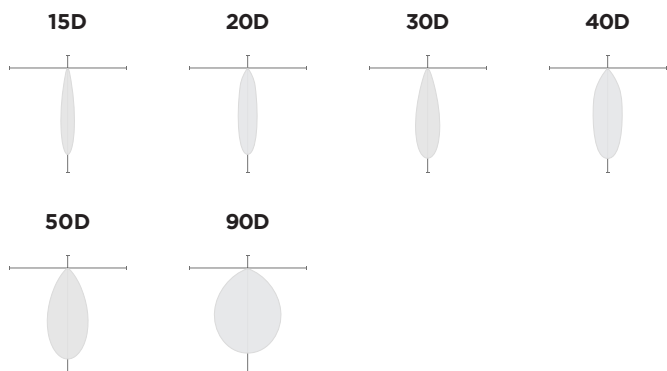
2" DOWNLIGHT CYLINDER  
5" AND 10" HEIGHT

2" diameter, high performance cylinder  
Standard 95+ CRI LED system with performance up to 103 LPW  
Delivered lumen range up to 1350lm at 95+ CRI  
Regressed LED source for enhanced glare control  
15° to 90° beam angle options suitable for various applications  
Extruded aluminum construction with no visible hardware  
Companion to 3G's DL20R series downlight family



**PRODUCTION Q2 2025**

### OPTICS



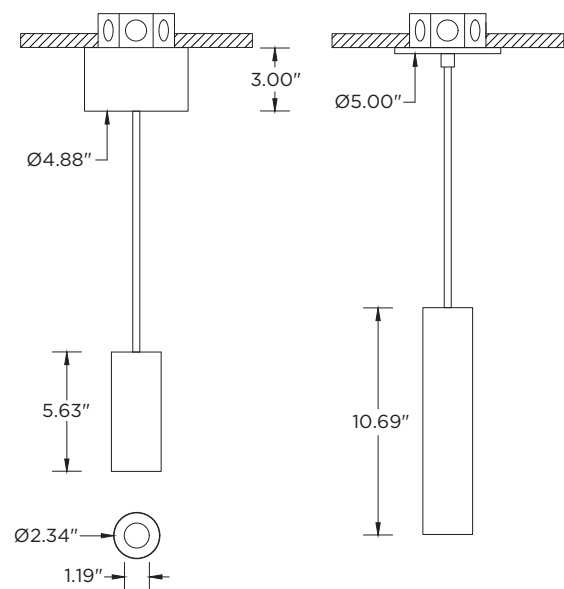
### PERFORMANCE

LUMEN OUTPUT	DELIVERED LUMENS	SYSTEM WATTS	EFFICACY (LPW)
750	750	7.5	100
1000	1000	10.3	97
1250	1250	13.0	96
1350	1350	15.2	89

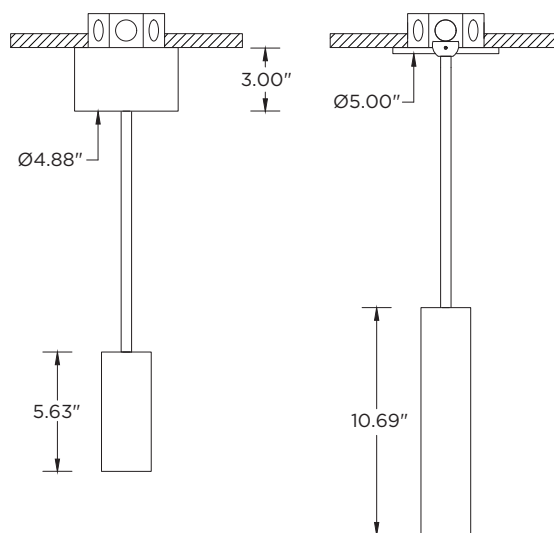
BASED ON 95+ CRI, 3500K, 30D OPTIC WITH SOFTENING LENS  
Lumen output and actual wattage may vary +/- 5%

### DIMENSIONS

#### CABLE SUSPENSION



#### STEM SUSPENSION



<b>PROJECT:</b>				<b>TYPE:</b>			
<b>CATALOG#:</b>				<b>DATE:</b>		<b>QTY:</b>	

CAT. NO	FIXTURE HEIGHT	LUMEN OUTPUT	CRI	COLOR TEMP	BEAM ANGLE
<b>3G-PDL20RF</b>	<b>5H</b> - 5" HEIGHT * <b>10H</b> - 10" HEIGHT **  <small>*5H only available with Power Canopy option. Max 1250lm. **10H available up to 1250lm with integral driver. Select Power Canopy for 1350lm</small>	<b>07</b> - 750 LUMENS <b>10</b> - 1000 LUMENS <b>12</b> - 1250 LUMENS <b>13</b> - 1350 LUMENS  <small>All lumen outputs are delivered lumens at 95+ CRI</small>	<b>H95</b> - 95+ CRI	<b>24K</b> - 2400K <b>27K</b> - 2700K <b>30K</b> - 3000K <b>35K</b> - 3500K <b>40K</b> - 4000K	<b>15D</b> - 15° <sup>1</sup> <b>20D</b> - 20° <b>30D</b> - 30° <b>40D</b> - 40° <b>50D</b> - 50° <b>90D</b> - 90° *  <small>*90D optic supplied with lens Not available with other lens options</small>

VOLTAGE	DRIVER	HOUSING FINISH	INSERT FINISH	CANOPY
<b>UNV</b> - 120/277V <b>120</b> - 120V	<b>DIM</b> - 0-10V (100-1%) <b>LE</b> - PHASE DIM <sup>2</sup> <small>(TRIAC/ELV, 100-1%)</small> <b>D01</b> - 0-10V (100-0.1%) <b>DALI</b> - DALI (100-1%) <sup>3</sup>	<b>WH</b> - WHITE <b>BK</b> - BLACK <b>SV</b> - SILVER <b>CF</b> - CUSTOM COLOR	<b>WI</b> - WHITE <b>BI</b> - BLACK <b>SI</b> - SILVER <b>CI</b> - CUSTOM COLOR	<b>CN</b> - CANOPY (STANDARD) <b>PC</b> - POWER CANOPY * <b>CF</b> - CONDUIT CANOPY  <small>*Power Canopy must be selected with 5H model Select Power Canopy for 10H model with 1350lm</small>

CANOPY FINISH	SUSPENSION TYPE	SUSPENSION LENGTH	OPTIONS
<b>WCF</b> - WHITE <b>BCF</b> - BLACK <b>SCF</b> - SILVER	<b>WC</b> - WHITE CABLE <b>BC</b> - BLACK CABLE <b>RSW</b> - WHITE RIGID STEM <b>RSB</b> - BLACK RIGID STEM <b>RSS</b> - SILVER RIGID STEM	<b>C60</b> - 60" CABLE <b>C120</b> - 120" CABLE <b>S48</b> - 48" STEM <b>S96</b> - 96" STEM  <small>All suspension options are field cuttable</small>	<b>SF</b> - SOFTENING LENS * <small>(SUPPLIED STANDARD)</small> <b>LS</b> - LINEAR SPREAD LENS <b>SB</b> - SANDBLASTED LENS <b>EMR</b> - REMOTE EMERGENCY <sup>4</sup> BATTERY  <small>*Softening lens not provided with 90D optic Maximum 1 optical accessory</small>

<sup>1</sup> 15D reflector available up to 1000lm

<sup>2</sup> Phase dimming options available in 120V only

<sup>3</sup> DALI-2 (Type 6) provided as standard. Consult factory for DALI Type 8 option

<sup>4</sup> Supplied with enclosure with Emergency Battery and driver. Installed remotely by others. Not accessible through fixture aperture

## PERFORMANCE

LUMEN OUTPUT	DELIVERED LUMENS	SYSTEM WATTS	EFFICACY (LPW)
750	750	7.5	100
1000	1000	10.3	97
1250	1250	13.0	96
1500	1500	15.2	89

BASED ON 95+ CRI, 3500K, 30D OPTIC WITH SOFTENING LENS  
Lumen output and actual wattage may vary +/- 5%

## MULTIPLIERS

BEAM ANGLE	
15D	0.95
20D	1.00
30D	1.00
40D	0.97
50D	0.94
90D	0.86

COLOR TEMP	
2400K	0.91
2700K	0.95
3000K	0.97
3500K	1.00
4000K	1.03

## HOUSING

Extruded aluminum housing with powder coated finish

## BEVELED INSERT

Cast aluminum beveled insert with matte powder coated finish  
2" aperture with regressed LED source for enhanced glare control

## OPTICS

High performance, TIR optic  
Beam angle available in 15°, 20°, 30°, 40°, 50° and 90°  
Optics are field replaceable (15° not interchangeable)  
Softening lens supplied standard

## ELECTRICAL

Standard 0-10V, constant current drivers  
100-1% dimming range and >0.9 power factor  
Standard 120/277V universal voltage with several driver options  
120V Forward Phase/Reverse Phase driver option (100-1%)  
Integral drivers are easily accessible through luminaire aperture  
Power Canopy with integral driver required for 5H model and higher lumen outputs with 10H model

## LED SYSTEM

Standard 95+ CRI  
Color consistency <2 SDCM  
Available in 24K, 27K, 30K, 35K, and 40K  
L90 > 50,000 hours

## MOUNTING

Standard, 18-gauge, 5 conductor single circuit power feed cable (white and black finish options)  
1/2" diameter rigid stem option with sloped ceiling adapter (field cuttable)  
All hardware included for mounting to 4" octagonal junction box  
Canopy provided in white finish as standard  
Power Canopy provided with integral driver (white finish standard)  
Conduit feed cut-out canopy option designed to mount to 4" octagonal junction box

## EMERGENCY

7W output for 90 minutes (+/- 700lm at 95+ CRI). Title 24 Certified Remote emergency battery (not accessible through fixture aperture)  
Maximum remote mounting distance: 50ft (12AWG) or 25ft (14AWG)  
Caution: Emergency Battery utilizes more than one power source and servicing should be performed by qualified personnel

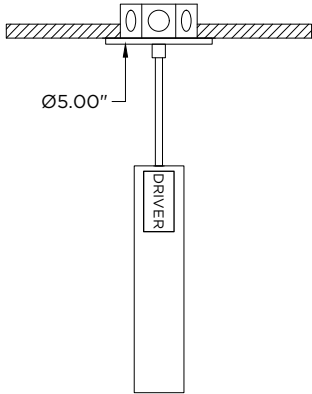
## LISTING

ETL listed and conforms to UL1598 standard  
Certified to CSA22.2 NO.250.0.  
Rated for dry or damp locations

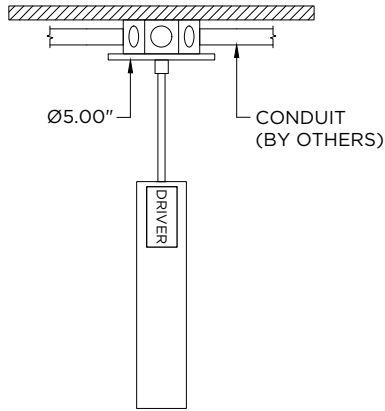
## WARRANTY

5 year limited warranty  
LED system rated for operation in ambient environments up to 25°C

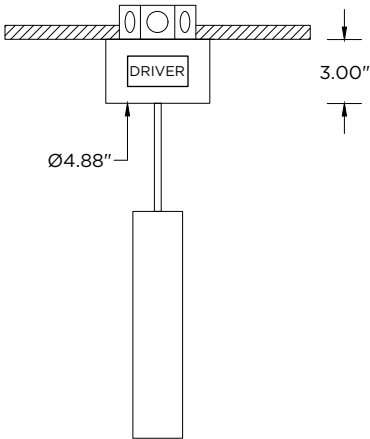
**CN - STANDARD CANOPY**  
RECESSED J-BOX (BY OTHERS)



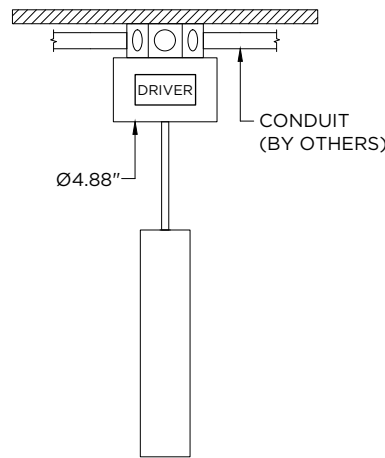
**CN - STANDARD CANOPY**  
SURFACE MOUNT J-BOX (BY OTHERS)



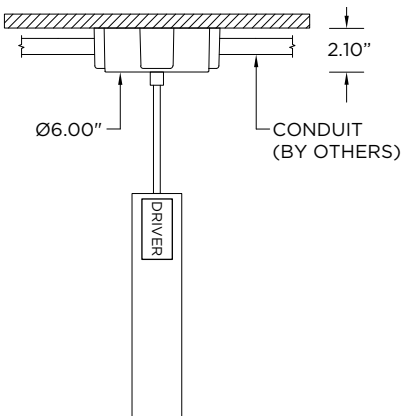
**PC - POWER CANOPY**  
RECESSED J-BOX (BY OTHERS)



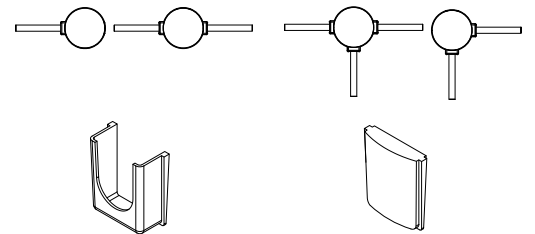
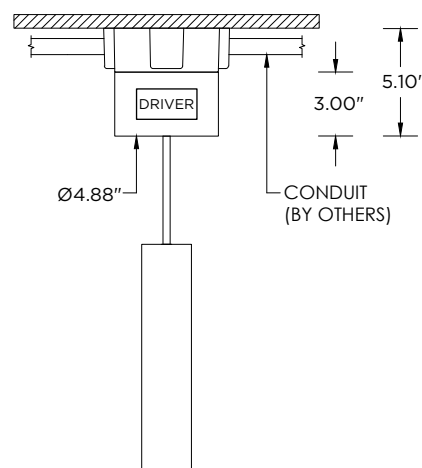
**PC - POWER CANOPY**  
SURFACE MOUNT J-BOX (BY OTHERS)



**CF - CONDUIT FEED CANOPY**  
SURFACE MOUNT J-BOX (BY OTHERS)



**CF - CONDUIT FEED CANOPY & PC - POWER CANOPY**  
SURFACE MOUNT J-BOX (BY OTHERS)



CONDUIT COVER  
3 PROVIDED WITH EACH  
CONDUIT FEED CANOPY

BLANK  
2 PROVIDED WITH EACH  
CONDUIT FEED CANOPY