

3G LIGHTING

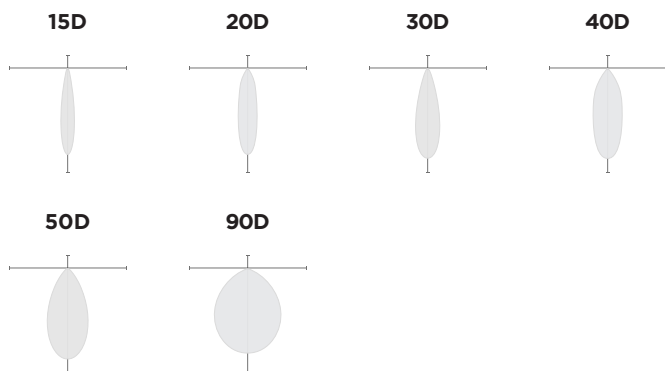
3G-SDL20RF

2" DOWNLIGHT CYLINDER
5" AND 10" HEIGHT

2" diameter, high performance cylinder
Standard 95+ CRI LED system with performance up to 103 LPW
Delivered lumen range up to 1350lm at 95+ CRI
Regressed LED source for enhanced glare control
15° to 90° beam angle options suitable for various applications
Extruded aluminum construction
Companion to 3G's DL20R series downlight family



OPTICS



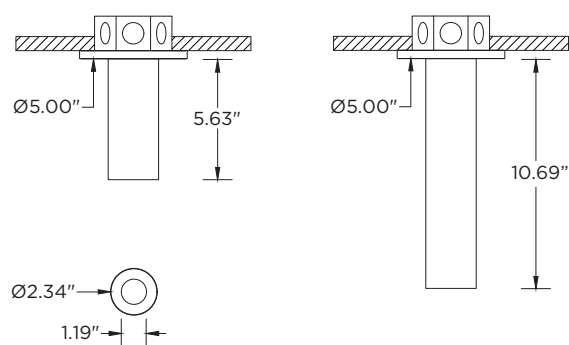
PERFORMANCE

LUMEN OUTPUT	DELIVERED LUMENS	SYSTEM WATTS	EFFICACY (LPW)
750	750	7.5	100
1000	1000	10.3	97
1250	1250	13.0	96
1350	1350	15.2	89

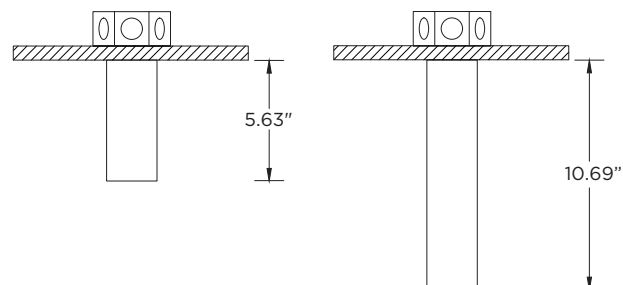
BASED ON 95+ CRI, 3500K, 30D OPTIC WITH SOFTENING LENS
Lumen output and actual wattage may vary +/- 5%

DIMENSIONS

STANDARD CANOPY



SEAMLESS CANOPY



PROJECT:		TYPE:	
CATALOG#:		DATE:	QTY:

CAT. NO	FIXTURE HEIGHT	LUMEN OUTPUT	CRI	COLOR TEMP	BEAM ANGLE
3G-SDL20RF	5H - 5" HEIGHT * 10H - 10" HEIGHT ** <small>*5H only available with remote drivers. Max 1250lm **10H model with 1350lm only available with remote driver</small>	07 - 750 LUMENS 10 - 1000 LUMENS 12 - 1250 LUMENS 13 - 1350 LUMENS <small>All lumen outputs are delivered lumens at 95+ CRI</small>	H95 - 95+ CRI	24K - 2400K 27K - 2700K 30K - 3000K 35K - 3500K 40K - 4000K	15D - 15° ¹ 20D - 20° 30D - 30° 40D - 40° 50D - 50° 90D - 90° * <small>*90D optic supplied with lens Not available with other lens options</small>

VOLTAGE	DRIVER	HOUSING FINISH	INSERT FINISH
UNV - 120/277V 120 - 120V	DIM - 0-10V (100-1%) LE - PHASE DIM ² <small>(TRIAC/ELV, 100-1%)</small> D01 - 0-10V (100-0.1%) DALI - DALI (100-1%) ³ RDIM - REMOTE 0-10 (100-1%) RLE - REMOTE PHASE DIM <small>(TRIAC/ELV, 100-1%)</small> RD01 - REMOTE 0-10V (100-1%) RDALI - REMOTE 0-10V (100-1%) <small>Remote drivers supplied with enclosure</small>	WH - WHITE BK - BLACK SV - SILVER	WI - WHITE BI - BLACK SI - SILVER

OPTIONS
SF - SOFTENING LENS (SUPPLIED STANDARD) * SB - SANDBLASTED LENS LS - LINEAR SPREAD LENS FXC - SEAMLESS CANOPY CF - CONDUIT FEED CANOPY EMR - REMOTE EMERGENCY BATTERY ⁴ <small>*Softening lens not provided with 90D optic Maximum 1 optical accessory</small>

¹ 15D reflector available up to 1000lm

² Phase dimming options available in 120V only

³ DALI-2 (Type 6) provided as standard. Consult factory for DALI Type 8 option

⁴ Supplied with enclosure with Emergency Battery and driver. Installed remotely by others. Not accessible through fixture aperture

PERFORMANCE

LUMEN OUTPUT	DELIVERED LUMENS	SYSTEM WATTS	EFFICACY (LPW)
750	750	7.5	100
1000	1000	10.3	97
1250	1250	13.0	96
1500	1500	15.2	89

BASED ON 95+ CRI, 3500K, 30D OPTIC WITH SOFTENING LENS
Lumen output and actual wattage may vary +/- 5%

MULTIPLIERS

BEAM ANGLE	
15D	0.95
20D	1.00
30D	1.00
40D	0.97
50D	0.94
90D	0.86

COLOR TEMP	
2400K	0.91
2700K	0.95
3000K	0.97
3500K	1.00
4000K	1.03

HOUSING

Extruded aluminum housing with powder coated finish

BEVELED INSERT

Cast aluminum beveled insert with matte powder coated finish
2" aperture with regressed LED source for enhanced glare control

OPTICS

High performance, TIR optic
Beam angle available in 15°, 20°, 30°, 40°, 50° and 90°
Optics are field replaceable (15° not interchangeable)
Softening lens supplied standard

ELECTRICAL

Standard 0-10V, constant current drivers
100-1% dimming range and >0.9 power factor
Standard 120/277V universal voltage with several driver options
120V Forward Phase/Reverse Phase driver option (100-1%)
Integral drivers are easily accessible through luminaire aperture
Remote drivers for 5" model supplied with enclosure

LED SYSTEM

Standard 95+ CRI
Color consistency <2 SDCM
Available in 24K, 27K, 30K, 35K, and 40K
L90 > 50,000 hours

MOUNTING

All hardware included for mounting to 4" octagonal junction box
Conduit feed cut-out canopy option designed to mount to 4" octagonal junction box
Seamless canopy option mounts to 4" octagonal junction box (new construction only)

EMERGENCY

7W output for 90 minutes (+/- 700lm at 95+ CRI). Title 24 Certified
Remote emergency battery (not accessible through fixture aperture)
Maximum remote mounting distance: 50ft (12AWG) or 25ft (14AWG)
Caution: Emergency Battery utilizes more than one power source and servicing should be performed by qualified personnel

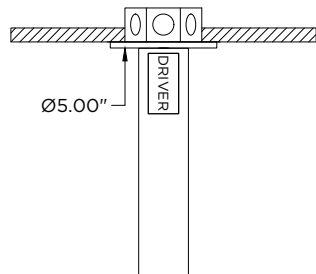
LISTING

ETL listed and conforms to UL1598 standard
Certified to CSA22.2 NO.250.0.
Rated for dry or damp locations

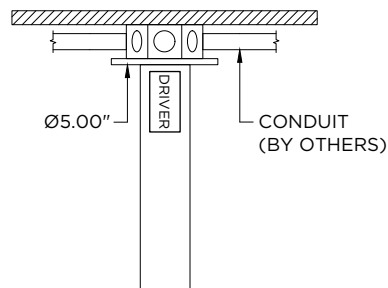
WARRANTY

5 year limited warranty
LED system rated for operation in ambient environments up to 25°C

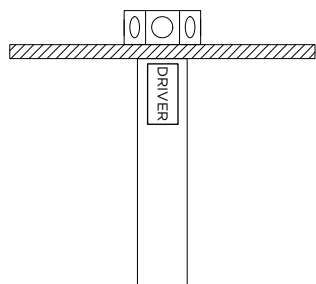
STANDARD CANOPY
RECESSED J-BOX (BY OTHERS)



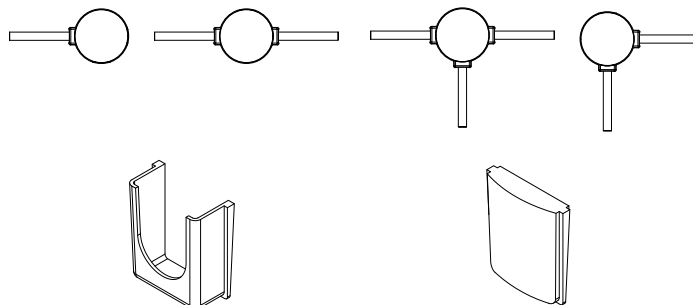
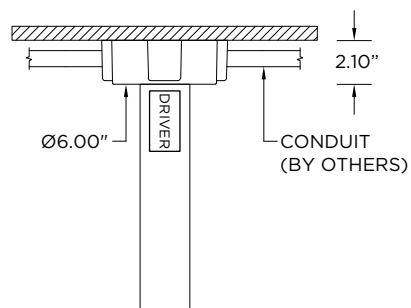
STANDARD CANOPY
SURFACE J-BOX (BY OTHERS)



FXC - SEAMLESS CANOPY
RECESSED J-BOX (BY OTHERS)



CF - CONDUIT FEED CANOPY
SURFACE MOUNT J-BOX (BY OTHERS)



CONDUIT COVER
3 PROVIDED WITH EACH
CONDUIT FEED CANOPY

BLANK
2 PROVIDED WITH EACH
CONDUIT FEED CANOPY