

3G LIGHTING

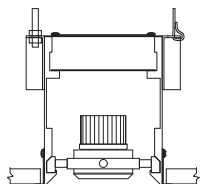
3GR-48RMSL

4.8" CURVED RECESSED SLOT
MINI MADISON

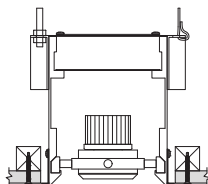
Solid aluminum double gimbal with dual axis adjustability
Individual fixture heads can be repositioned in either direction (up to 18")
Standard 95+ CRI LED system with performance up to 143 LPW
Delivered lumen range up to 2250lm at 95+ CRI
Regressed LED source for enhanced glare control
10° to 90° beam angle options suitable for various applications
Companion to 3G's Madison product family



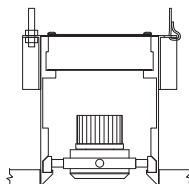
WT - TRIM



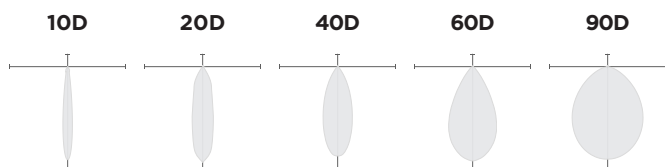
XTR - TRIMLESS



FX - FLANGELESS



OPTICS



PERFORMANCE

LUMEN OUTPUT	DELIVERED LUMENS	SYSTEM WATTS	EFFICACY (LPW)
1000	1000	8.5	117
1500	1500	13.5	111
2000	2000	18.5	108
2250	2250	21.2	106

BASED ON 95+ CRI, 3500K, 40D OPTIC
Lumen output and actual wattage may vary +/- 5%

SHAPES

This product is designed to be specified using our online configurator. The following configurations are standard offerings. For customized layouts, see page 7 for instructions

RING	CAPSULE	L-SHAPE
<p>More details on page 5</p>	<p>More details on page 5</p>	<p>More details on page 6</p>
U-SHAPE	SQUARE	RECTANGLE
<p>More details on page 6</p>	<p>More details on page 6</p>	<p>More details on page 6</p>

USE ONLINE CONFIGURATOR TO SPECIFY THIS PRODUCT LINE. [CONFIGURE](#)

PROJECT:		TYPE:	
CATALOG#:		DATE:	QTY:

CAT. NO	LUMEN OUTPUT**	CRI	COLOR TEMP	BEAM ANGLE	VOLTAGE
3GR-48RMSL	10 - 1000 LUMENS 15 - 1500 LUMENS 20 - 2000 LUMENS 22 - 2250 LUMENS <small>All lumen outputs are delivered lumens at 95+ CRI</small>	H95 - 95+ CRI	27K - 2700K 30K - 3000K 35K - 3500K 40K - 4000K	10D - 10° ¹ 20D - 20° 40D - 40° 60D - 60° 90D - 90° * <small>*90D optic supplied with lens Not available with other lens options</small>	UNV - 120/277V 120 - 120V 347 - 347V ²

DRIVER	TRIM FLANGE	GIMBAL FINISH	HOUSING INTERIOR
DIM - 0-10V (100-1%) LE - PHASE DIM ³ <small>(TRIAC/ELV, 100-1%)</small> D01 - 0-10V (100-0.1%) DALI - DALI (100-1%) ⁴ DHL2 - LUTRON HI-LUME <small>(1% ECOSYSTEM)</small> DMX - DMX (100-0%)	WT - WHITE TRIM (STANDARD) BT - BLACK TRIM XTR - TRIMLESS (MUD-IN DRYWALL) FX - FLANGELESS	NG - NATURAL ALUMINUM BG - BLACK GIMBAL WG - WHITE GIMBAL	BK - BLACK (STANDARD) WH - WHITE

OPTIONS	RUN TYPE	RADIUS	RADIUS DOWNLIGHTS	TOTAL DOWNLIGHTS
CP - CHICAGO PLENUM EMR - EMERGENCY BATTERY ⁵ <small>(REMOTE)</small> 2C - 2 CIRCUIT OPERATION 3C - 3 CIRCUIT OPERATION SF - SOFTENING LENS SB - SANDBLASTED LENS LS - LINEAR SPREAD LENS HXB - BLACK HEXCELL LOUVER <small>*Lens options not available with 90D optic Maximum 2 optical accessories</small>	O - ____' (RING) P - ____'x ____' (CAPSULE) L - ____'x ____' (L-SHAPE) U - ____'x ____'x ____' (U-SHAPE) SQ - ____'x ____' (SQUARE) R - ____'x ____' (RECTANGLE) CUS - CUSTOM SHAPE <small>(PLEASE SUBMIT DRAWING TO 3G)</small> <small>*Product is designed to be specified using our online configurator. CONFIGURE</small>	RA - ____' <small>*Ring and Capsule shapes do not require Radius selection</small>	RL - ____'	DL - ____'

- ¹ 10D and 20D reflector available up to 2000lm
² 347 available in "DIM" 0-10V only (100-1%)
³ Phase dimming options available in 120V only
⁴ DALI-2 (Type 6) provided as standard
⁵ Supplied with enclosure with Emergency Battery and driver. Installed remotely by others. Not accessible through fixture aperture

PERFORMANCE

LUMEN OUTPUT	DELIVERED LUMENS	SYSTEM WATTS	EFFICACY (LPW)
1000	1000	8.5	117
1500	1500	13.5	111
2000	2000	18.5	108
2250	2250	21.2	106

BASED ON 95+ CRI, 3500K, 40D OPTIC
Lumen output and actual wattage may vary +/- 5%

MULTIPLIERS

BEAM ANGLE	
10D	0.97
20D	1.20
40D	1.00
60D	1.02
90D	0.90

COLOR TEMP	
2700K	0.98
3000K	1.00
3500K	1.00
4000K	1.02

HOUSING

Housing constructed in extruded aluminum and cold rolled steel
Designed for continuous runs in various configurations
Maximum ceiling thickness of 1.75". Consult factory for modifications
Standard matte black powder coated housing finish
Trim flange with powder coated finish and 0.400" overlap
Trimless model features a perforated galvanized mudding flange

ADJUSTABILITY

Solid aluminum double gimbal with dual axis adjustability
Individual fixture heads can be repositioned within channel
Movement allowable up to 18" in either direction
Each double gimbal can be locked in place

OPTICS

Proprietary anodized, aluminum reflectors
Beam angle available in 10°, 20°, 40° and 60°, and 90°
Reflectors are field replaceable
10° and 20° reflectors are multi-faceted (not interchangeable with other options)

LED SYSTEM

Standard 95+ CRI
Color consistency <2 SDCM
Available in 27K, 30K, 35K, and 40K
L90 > 50,000 hours

ELECTRICAL

Standard 0-10V, constant current drivers
100-1% dimming range and >0.9 power factor
Standard 120/277V universal voltage with several driver options
120V Forward Phase/Reverse Phase driver option (100-1%)
Integral drivers are easily accessible through luminaire aperture

EMERGENCY

7W output for 90 minutes (One fixture head +/- 850lm at 95+ CRI)
Title 24 Certified
Remote emergency battery not accessible through fixture aperture
Maximum remote mounting distance:
3000lm or below - 50ft (12AWG) or 25ft (14AWG)
Caution: Emergency Battery utilizes more than one power source and servicing should be performed by qualified personnel

MOUNTING

New construction housing suspended via 1/4" threaded rod or suspension cables (by others)
Trim fixture designed for use in drywall, wood, and other architectural ceiling materials
Trimless fixture designed for use in drywall, mud-in ceiling applications
Flangeless fixture designed for use in wood ceilings

LISTING

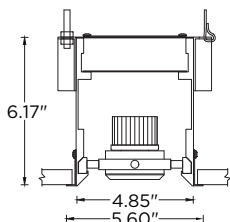
ETL listed and conforms to UL1598 standard
Certified to CSA22.2 No.250.0.
Rated for dry or damp locations

WARRANTY

5 year limited warranty
LED system rated for operation in ambient environments up to 25°C

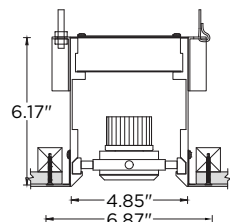
HARD CEILING

WT - TRIM



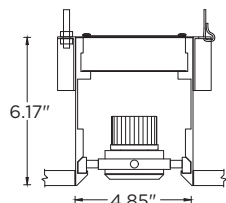
RECOMMENDED CEILING
CUT-OUT 5.20"

XTR - TRIMLESS



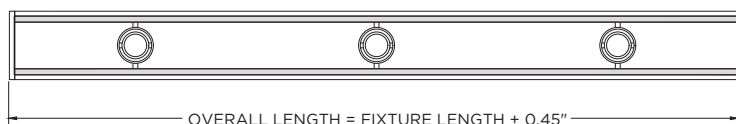
RECOMMENDED CEILING
CUT-OUT 5.20"

FX - FLANGELESS

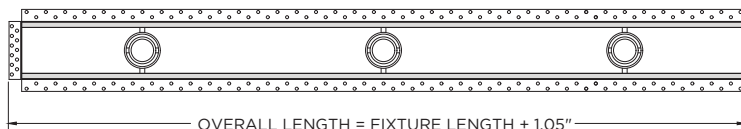


RECOMMENDED CEILING
CUT-OUT 4.90"

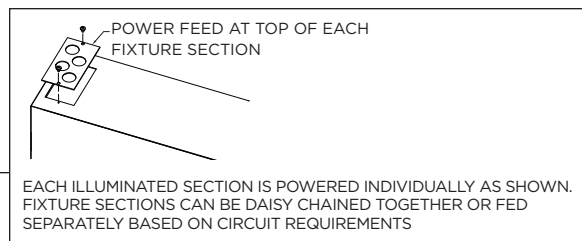
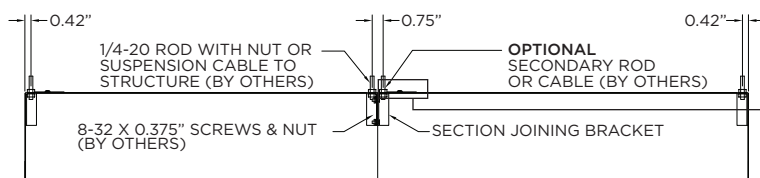
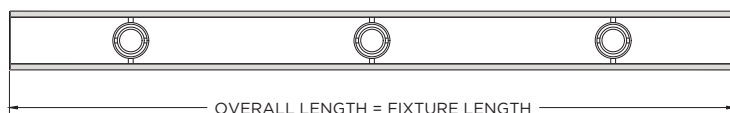
TRIM



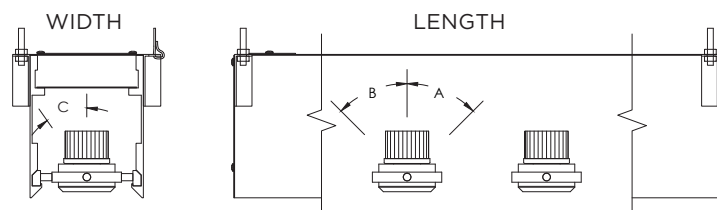
TRIMLESS (MUD-IN DRYWALL)



FLANGELESS



GIMBAL ADJUSTABILITY

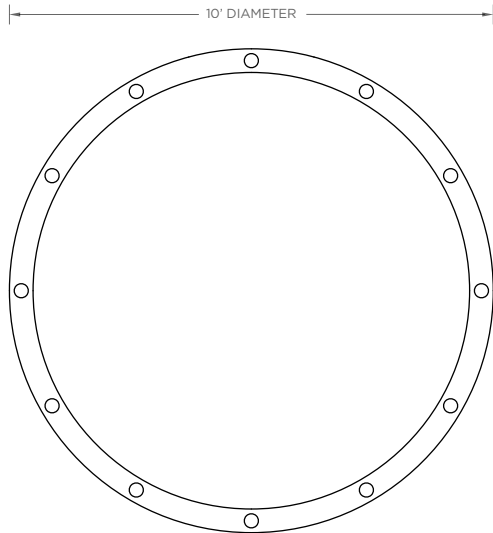


LUMEN OUTPUT	A	B	C
Up to 2000lm	45°	45°	25°
2250lm	45°	45°	20°

USE ONLINE CONFIGURATOR TO SPECIFY THIS PRODUCT LINE. [CONFIGURE](#)

RING

RUN TYPE	TOTAL DOWNLIGHTS
<input checked="" type="radio"/> - RING <input type="radio"/> - RING	12
10' DIAMETER <input type="text"/>	



Step 1: Select diameter: **2'-60'**

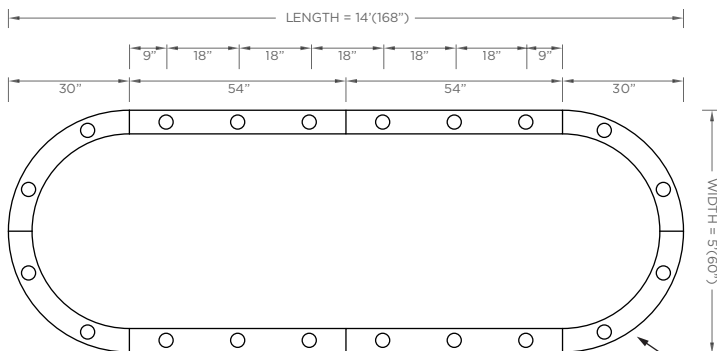
Step 2: Select the total number of downlights

Configurator Logic: Downlight options scale with diameter selection

USE ONLINE CONFIGURATOR TO SPECIFY THIS PRODUCT LINE. [CONFIGURE](#)

CAPSULE (PILL)

RUN TYPE	RADIUS	RADIUS DOWNLIGHTS	TOTAL DOWNLIGHTS
<input checked="" type="radio"/> - CAPSULE <input type="radio"/> - CAPSULE	30"	2	20
5' (5' LONG) <input type="text"/>			
14' (14' LONG) <input type="text"/>			



Step 1: Select width: **2'-10'**

Step 2: Select length: **4'-100'**

Step 3: Select the number of downlights in radius segments

Step 4: Select the number of downlights

Configurator Logic: Downlight options scale with diameter selection

RADIUS / RADIUS DOWNLIGHTS
30" RADIUS / 2 DOWNLIGHTS

USE ONLINE CONFIGURATOR TO SPECIFY THIS PRODUCT LINE. [CONFIGURE](#)

L-SHAPE / U-SHAPE / SQUARE / RECTANGLE

RUN TYPE		RADIUS	RADIUS DOWNLIGHTS	TOTAL DOWNLIGHTS
U - U-SHAPE		18"	2	14
12' (12' LONG)	✓			
8' (8' LONG)	✓			
10' (10' LONG)	✓			

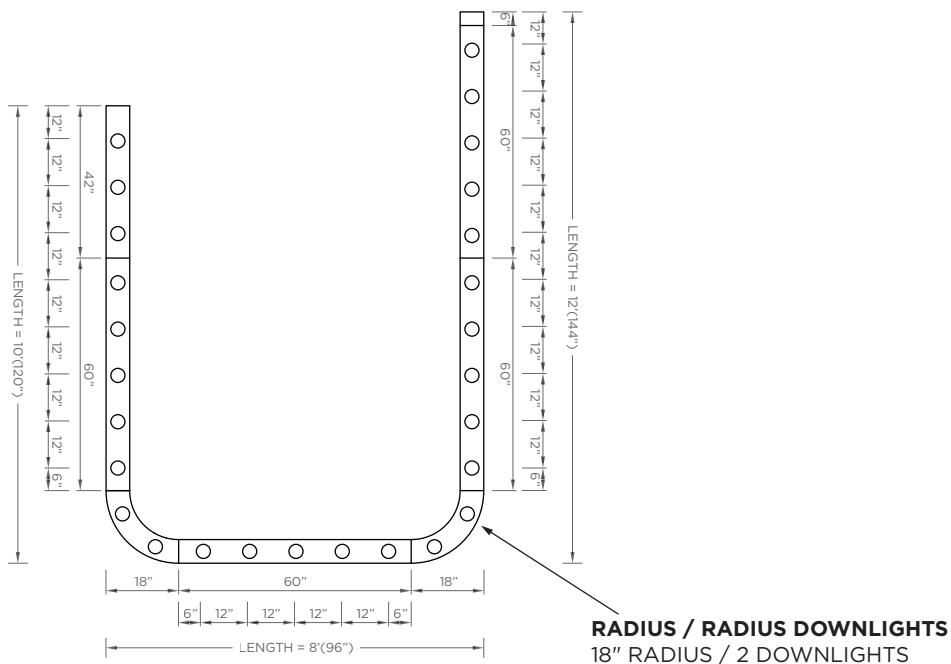
Step 1: Select lengths (2'-100' each side)

Step 2: Select soft corner radius (12"-60")

Step 3: Select number of downlights in radius segments

Step 4: Select the total number of downlights

Configurator Logic: The lengths of each side dictate the soft corner radius size available. Once radius is selected, choose the number of downlights within the radius from the drop down list. Choose the total number of downlights within the entire run from the drop down list. Downlights are distributed proportionally along straight sides according to length, with on-center spacing rules applied automatically.



CUSTOM

RUN TYPE	RADIUS	RADIUS DOWNLIGHTS	TOTAL DOWNLIGHTS
CUS - CUSTOM ✕	----- ▼	----- ▼	----- ▼

Option 1: CAD Layout

Download CAD blocks from the product page and create your layout using available modules in your preferred **CAD software**, submit a PDF or **DWG/DXF file**.

Modules:

- **Radius options:** 12", 18", 24", 30", 36", 42", 48", 54", 60"
- **Angle segments:** 30°, 45°, 60°, 90°
- **Straight runs:** available in **6" increments**

Configurator Logic: 3G reviews all custom submissions and returns a validated layout with part numbers, downlight counts, sectioning, and circuit guidance.

Option 2: Sketch

Submit a simple sketch with dimensions, number of downlights and spacing, and we'll generate the closest configuration.

