



3GQ-DL45RA

4.5" ROUND ADJUSTABLE
DOWNLIGHT

4.5" diameter, adjustable downlight
Standard 95+ CRI LED system with performance up to 113 LPW
Delivered lumen range up to 2500lm at 95+ CRI
Regressed LED source for enhanced glare control
Proprietary hot aiming mechanism with sliding center beam optimization
0° - 40° lockable tilt and 360° lockable rotation
Energy Star and Title 24 JA8 certified with maximum 1500lm output
Companion to 3G's Cylinder product family



10 DAY QUICKSHIP
MAX ORDER SIZE: 50 pcs



PROJECT:		TYPE:	
CATALOG#:		DATE:	QTY:

CAT. NO	LUMEN OUTPUT	CRI	COLOR TEMP	BEAM ANGLE	VOLTAGE
3GQ-DL45RA	10 - 1000 LUMENS 15 - 1500 LUMENS 20 - 2000 LUMENS 25 - 2500 LUMENS All lumen outputs are delivered lumens at 95+ CRI	H95 - 95+ CRI	30K - 3000K 35K - 3500K 40K - 4000K	10D - 10° ¹ 20D - 20° 40D - 40° 60D - 60°	UNV - 120/277V

DRIVER	FLANGE TYPE	BEVELED INSERT	HOUSING TYPE
DIM - 0-10V (100-1%)	WT - WHITE TRIM XTR - TRIMLESS (MUD-IN DRYWALL)	WI - WHITE	RMD - REMODEL (NON-IC) NCF - NEW CONSTRUCTION FRAME (NON-IC) NC - NEW CONSTRUCTION HOUSING (CP RATED) IC - NEW CONSTRUCTION IC HOUSING ² NCF and SH housings ship nailer type bar hangers NC and IC housings ship with C-channel bar hangers

OPTIONS
SF - SOFTENING LENS (SUPPLIED STANDARD) * WL - WET LOCATION RATED (SUPPLIED WITH SOFTENING LENS) CP - CHICAGO PLENUM ³ Maximum 1 optical accessory

¹ 10D reflector available up to 2000lm

² New Construction IC housing available up to 2000lm

³ Chicago Plenum option available with New Construction Housing



Energy Star Listing available with 1500lm maximum
Driver options include "DIM" (0-10V) and "LE" (Phase dimming)



JA8 (Title 24) Listing available with 1500lm maximum
Driver options include "DIM" (0-10V) and "LE" (Phase dimming)



3GQ-DL45RA

4.5" ROUND ADJUSTABLE - DOWNLIGHT

PERFORMANCE | TECHNICAL

PERFORMANCE

LUMEN OUTPUT	DELIVERED LUMENS	SYSTEM WATTS	EFFICACY (LPW)
1000	1000	9.7	103
1500	1500	14.9	101
2000	2000	20.9	96
2500	2500	27.0	93

BASED ON 95+ CRI, 3500K, 40D OPTIC WITH SOFTENING LENS
Lumen output and actual wattage may vary +/- 5%

MULTIPLIERS

BEAM ANGLE	
10D	1.10
20D	0.98
40D	1.00
60D	0.97

COLOR TEMP	
2700K	0.98
3000K	1.00
3500K	1.00
4000K	1.02

HOUSING

Remodel, new construction frame, new construction and IC housing options available

Maximum ceiling thickness of 1.5". Consult factory for modifications

All housing options designed to be easily converted in field to trim or trimless with minimal components

Housing rated for #12 AWG (4 in, 4 out), 90°C conductors and through branch wiring

BEVELED INSERT

Cast aluminum beveled insert with matte powder coated finish
4.5" aperture with regressed LED source for enhanced glare control

TRIM

Machined aluminum trim flange with matte powder coated finish and minimal 0.375" overlap

TRIMLESS

Mudding flange features a perforated surface for easy mud-in application

Integral blocking support provided to ensure fixture is properly secured within ceiling structure

OPTICS

Proprietary anodized, aluminum reflectors

Beam angle available in 10°, 20°, 40° and 60°

Reflectors are field replaceable (10° reflector not interchangeable)

Softening lens supplied standard

0° - 40° lockable tilt and 360° lockable rotation (center beam optimization)

LED SYSTEM

Standard 95+ CRI

Color consistency <2 SDCM

Available in 27K, 30K, 35K, and 40K

L90 > 50,000 hours

ELECTRICAL

Standard 120/277V, 0-10V constant current drivers

100-1% dimming range and >0.9 power factor

Integral drivers are easily accessible through luminaire aperture

MOUNTING

Trim fixture designed for use in drywall, wood, acoustic, and other architectural ceilings

Trimless fixture designed for use in drywall, mud-in ceiling applications

New construction frame ship with nailer type bar hangers (14" to 26" extension)

New construction and IC housing ship with C-Channel bar hangers

LISTING

ETL listed and conforms to UL1598 standard

Certified to CSA22.2 NO.250.0.

JA8 (Title 24) Listed

Rated for dry or damp locations

WARRANTY

5 year limited warranty

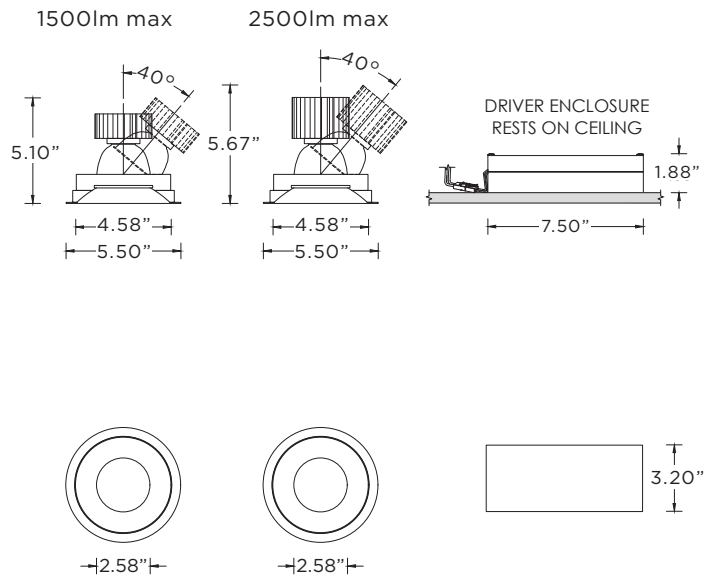
LED system rated for operation in ambient environments up to 25°C



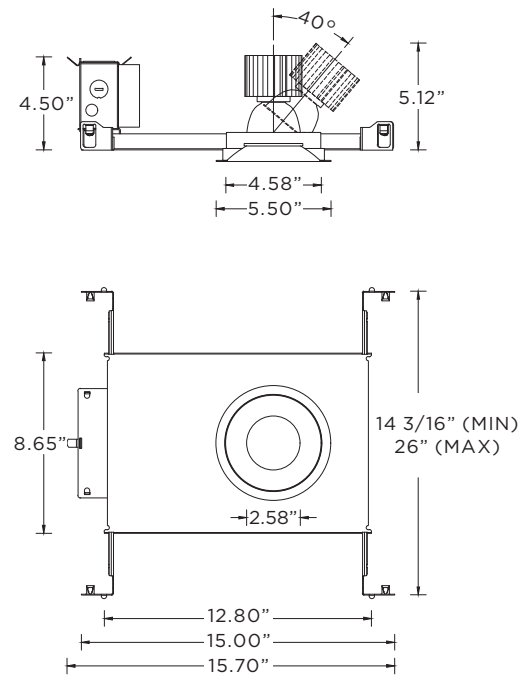
3GQ-DL45RA
4.5" ROUND ADJUSTABLE - DOWNLIGHT

TRIM HOUSING OPTIONS

RMD - REMODEL (NON-IC)

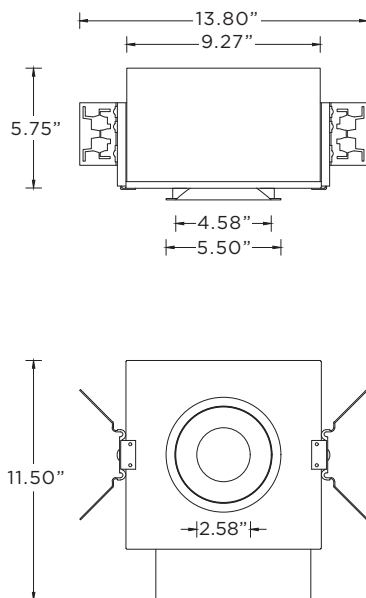


NCF - NEW CONSTRUCTION FRAME (NON-IC)



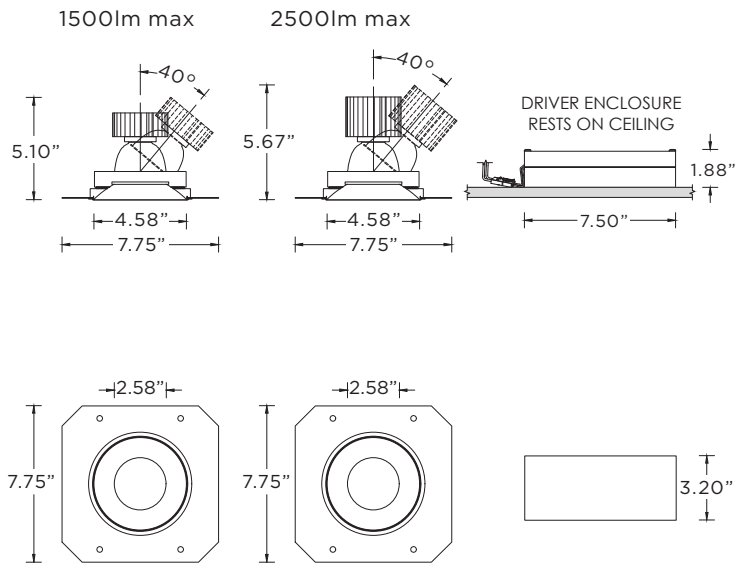
NC- NEW CONSTRUCTION HOUSING (NON-IC AND CP RATED)

IC - NEW CONSTRUCTION IC HOUSING (2000LM MAX)

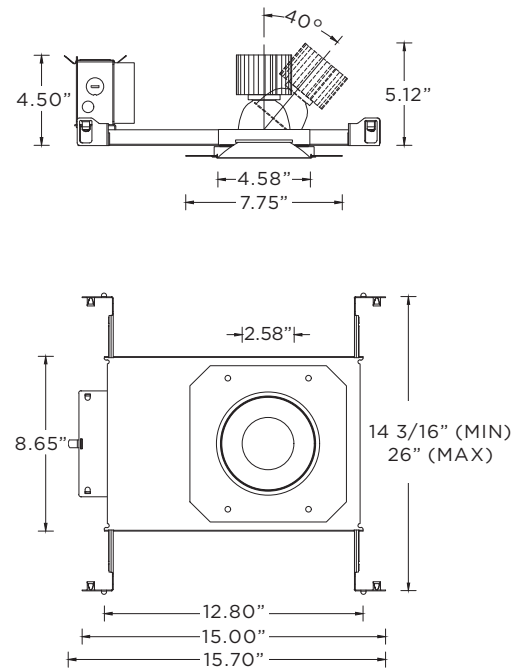




RMD - REMODEL (NON-IC)



NCF - NEW CONSTRUCTION FRAME (NON-IC)



NC- NEW CONSTRUCTION HOUSING (NON-IC AND CP RATED)

IC - NEW CONSTRUCTION IC HOUSING (2000LM MAX)

