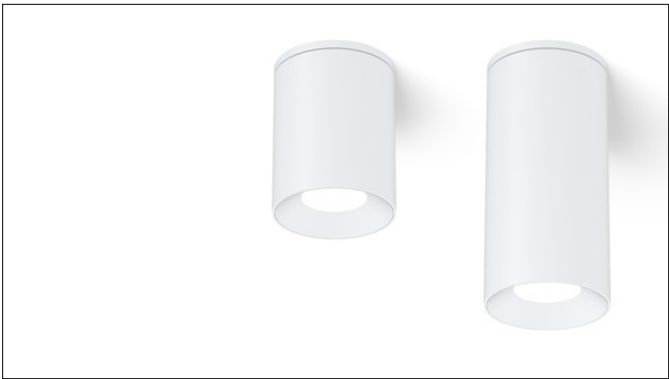




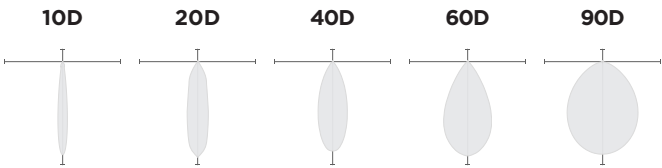
**3G-SDL45RF**

4" DOWNLIGHT CYLINDER  
7" AND 11" HEIGHT

4" diameter, high performance cylinder with upgraded performance  
Standard 95+ CRI LED system with performance up to 126 LPW  
Delivered lumen range up to 2856lm at 95+ CRI  
Regressed LED source with enhanced glare control  
10° to 90° beam angle options suitable for various applications  
Twist and lock extruded aluminum construction with no visible hardware  
Companion to 3G's DL45R series downlight family



**OPTICS**

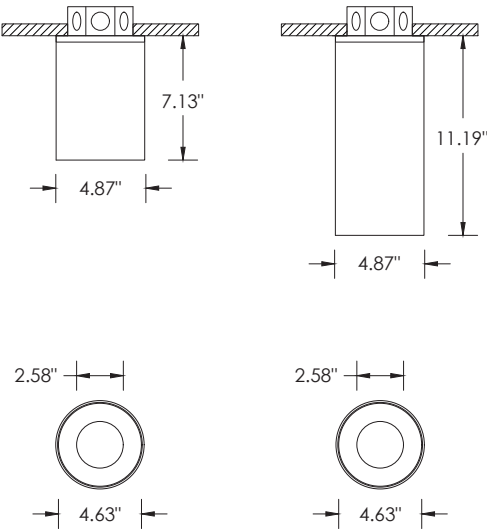


**PERFORMANCE**

LUMEN OUTPUT	DELIVERED LUMENS	SYSTEM WATTS	EFFICACY (LPW)
1000	1000	9.1	110
1500	1500	14.0	108
2000	2000	19.0	105
2500	2500	24.2	103

BASED ON 95+ CRI, 3500K, 20D OPTIC WITH SOFTENING LENS  
Lumen output and actual wattage may vary +/- 5%

**DIMENSIONS**



<b>PROJECT:</b>				<b>TYPE:</b>			
<b>CATALOG#:</b>				<b>DATE:</b>		<b>QTY:</b>	

CAT. NO	FIXTURE HEIGHT	LUMEN OUTPUT	CRI	COLOR TEMP	BEAM ANGLE
<b>3G-SDL45RF</b>	<b>7H</b> - 7" HEIGHT * <b>11H</b> - 11" HEIGHT	<b>10</b> - 1000 LUMENS <b>15</b> - 1500 LUMENS <b>20</b> - 2000 LUMENS <b>25</b> - 2500 LUMENS	<b>H95</b> - 95+ CRI	<b>27K</b> - 2700K <b>30K</b> - 3000K <b>35K</b> - 3500K <b>40K</b> - 4000K	<b>10D</b> - 10° <sup>1</sup> <b>20D</b> - 20° <b>40D</b> - 40° <b>60D</b> - 60° <b>90D</b> - 90° *
	*7H available up to 2000lm *7H not available with DMX or DHL2	All lumen outputs are <b>delivered lumens</b> at 95+ CRI			*90D optic supplied with lens Not available with other lens options

VOLTAGE	DRIVER	HOUSING FINISH	INSERT FINISH
<b>UNV</b> - 120/277V <b>120</b> - 120V <b>347</b> - 347V <sup>2</sup>	<b>DIM</b> - 0-10V (100-1%) <b>LE</b> - PHASE DIM <sup>3</sup> (TRIAC/ELV, 100-1%) <b>D01</b> - 0-10V (100-0.1%) <b>DALI</b> - DALI (100-1%) <sup>4</sup> <b>DHL2</b> - LUTRON HI-LUME LDE <sup>5</sup> (100-1%) <b>DMX</b> - DMX (100-0%) <sup>5</sup>	<b>WH</b> - WHITE <b>BK</b> - BLACK <b>SV</b> - SILVER <b>CSF</b> - CUSTOM-3G	<b>WI</b> - WHITE <b>BI</b> - BLACK <b>SI</b> - SILVER <b>CI</b> - CUSTOM-3G

OPTIONS
<b>SF</b> - SOFTENING LENS (SUPPLIED STANDARD) <b>SB</b> - SANDBLASTED LENS <b>LS</b> - LINEAR SPREAD LENS <b>CF</b> - CONDUIT FEED CANOPY <b>EMR</b> - EMERGENCY BATTERY (REMOTE) <sup>6</sup>
All canopy options provided in same finish as housing

<sup>1</sup> 10D reflector available up to 2000lm

<sup>2</sup> 347 available in "DIM" 0-10V only (100-1%). Not available with 7H model

<sup>3</sup> Phase dimming options available in 120V only

<sup>4</sup> DALI-2 (Type 6) provided as standard

<sup>5</sup> DMX and DHL2 not available with 7H model

<sup>6</sup> Supplied with enclosure with Emergency Battery and driver. Installed remotely by others. Not accessible through fixture aperture

## PERFORMANCE

LUMEN OUTPUT	DELIVERED LUMENS	SYSTEM WATTS	EFFICACY (LPW)
1000	1000	9.1	110
1500	1500	14.0	108
2000	2000	19.0	105
2500	2500	24.2	103

BASED ON 95+ CRI, 3500K, 40D OPTIC  
Lumen output and actual wattage may vary +/- 5%

## MULTIPLIERS

BEAM ANGLE	
10D	1.07
20D	1.12
40D	1.00
60D	1.04
90D	0.96

COLOR TEMP	
2700K	0.98
3000K	1.00
3500K	1.00
4000K	1.02

## HOUSING

Extruded aluminum housing with powder coated finish  
Twist and lock construction with no visible hardware

## BEVELED INSERT

Cast aluminum beveled insert with matte powder coated finish  
4" aperture with regressed LED source for enhanced glare control

## OPTICS

Proprietary anodized, aluminum reflectors  
Beam angle available in 10°, 20°, 40°, 60° and 90°  
Reflectors are field replaceable (10° reflector not interchangeable)  
Softening lens supplied standard

## ELECTRICAL

Standard 0-10V, constant current drivers  
100-1% dimming range and >0.9 power factor  
Standard 120/277V universal voltage with several driver options  
120V Forward Phase/Reverse Phase driver option (100-1%)  
Integral drivers are easily accessible through luminaire aperture

## LED SYSTEM

Standard 95+ CRI  
Color consistency <2 SDCM  
Available in 27K, 30K, 35K, and 40K  
L90 > 50,000 hours

## MOUNTING

All hardware included for mounting to 4" octagonal junction box  
Canopy provided in white finish as standard  
Conduit feed cut-out canopy option designed to mount to 4" octagonal junction box  
Twist and lock mechanism with no visible hardware

## EMERGENCY

7W output for 90 minutes (+/- 825lm at 95+ CRI). Title 24 Certified  
Remote emergency battery (not accessible through fixture aperture)  
Maximum remote mounting distance: 50ft (12AWG) or 25ft (14AWG)  
Caution: Emergency Battery utilizes more than one power source and servicing should be performed by qualified personnel

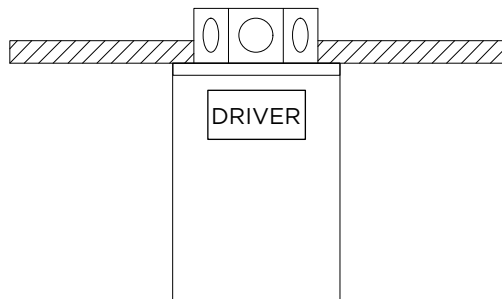
## LISTING

ETL listed and conforms to UL1598 standard  
Certified to CSA22.2 NO.250.0.  
Rated for dry or damp locations

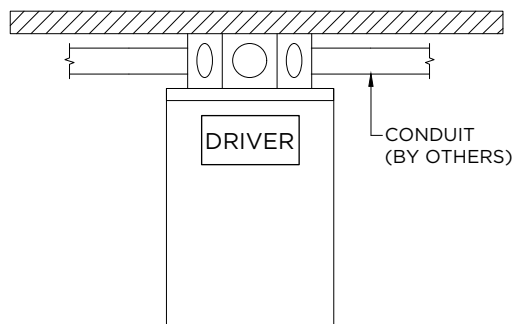
## WARRANTY

5 year limited warranty  
LED system rated for operation in ambient environments up to 25°C

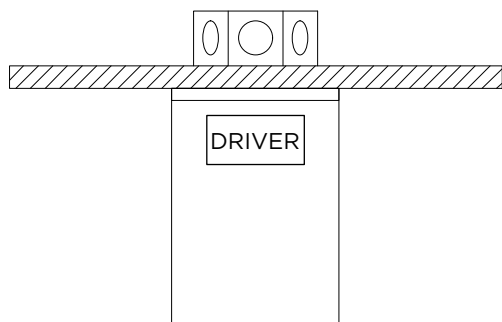
**STANDARD CANOPY**  
RECESSED J-BOX (BY OTHERS)



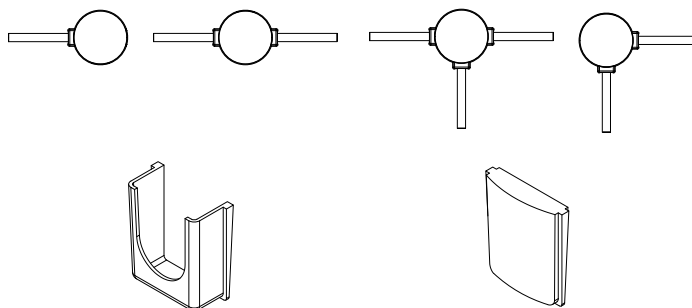
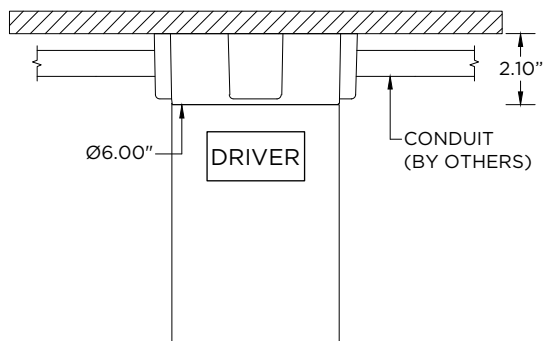
**STANDARD CANOPY**  
SURFACE J-BOX (BY OTHERS)



**FXC - SEAMLESS CANOPY**  
RECESSED J-BOX (BY OTHERS)



**CF - CONDUIT FEED CANOPY**  
SURFACE MOUNT J-BOX (BY OTHERS)



CONDUIT COVER  
3 PROVIDED WITH EACH  
CONDUIT FEED CANOPY

BLANK  
2 PROVIDED WITH EACH  
CONDUIT FEED CANOPY