

# 3G LIGHTING

## 3G-DL33SA

3" SQUARE ADJUSTABLE DOWNLIGHT  
DIM TO WARM

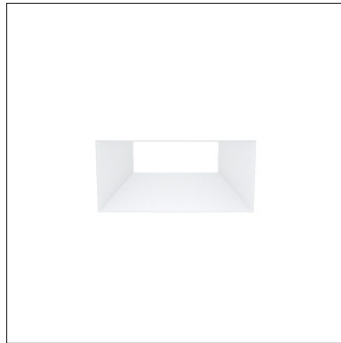
Standard 90+ CRI Dim to Warm LED system (3000K-1800K)  
Regressed LED source for enhanced glare control  
Proprietary hot aiming mechanism with sliding center beam optimization  
0° - 40° lockable tilt and 360° lockable rotation  
Available with Lutron Awn for wireless control  
Companion to 3G's Cylinder, G-RO, and 3Gi product families



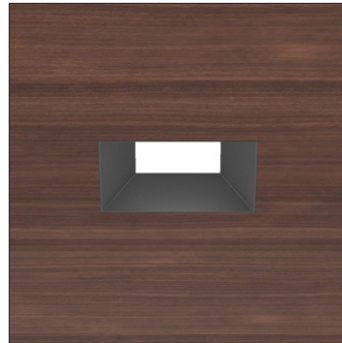
### TRIM FLANGE



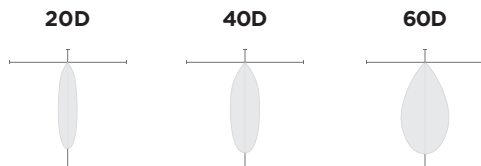
### TRIMLESS



### MILLWORK



### OPTICS



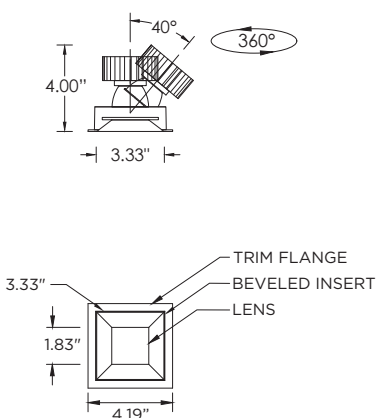
### PERFORMANCE

LUMEN OUTPUT	DELIVERED LUMENS	SYSTEM WATTS	EFFICACY (LPW)
750	750	11.7	64
1000	1000	16.1	62
1250	1250	20.7	60
1500	1500	26.6	56

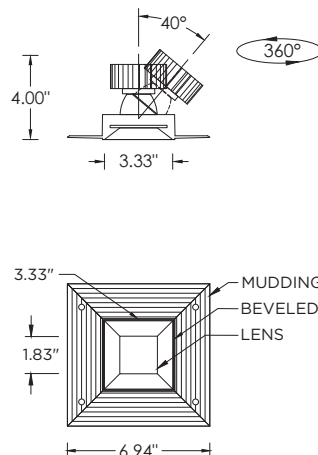
BASED ON 90+ CRI, 3000K, 40D OPTIC WITH SOFTENING LENS  
Lumen output and actual wattage may vary +/- 5%

### DIMENSIONS

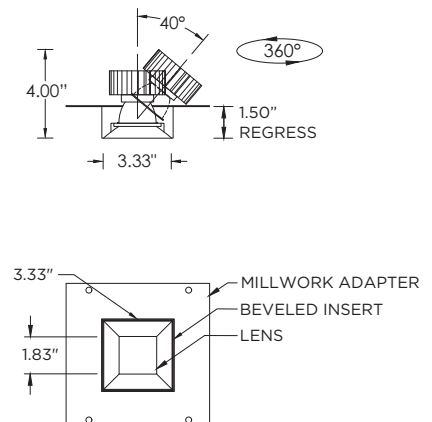
#### TRIM FLANGE



#### TRIMLESS



#### MILLWORK



<b>PROJECT:</b>		<b>TYPE:</b>	
<b>CATALOG#:</b>		<b>DATE:</b>	<b>QTY:</b>

CAT. NO	LED SOURCE	LUMEN OUTPUT	CRI	BEAM ANGLE	VOLTAGE
<b>3G-DL33SA</b>	<b>DW - DIM TO WARM</b> (3000K-1800K)	<b>07 - 750 LUMENS</b> <b>10 - 1000 LUMENS</b> <b>12 - 1250 LUMENS</b> <b>15 - 1500 LUMENS</b>  <small>All lumen outputs are delivered lumens at 90+ CRI</small>	<b>H90 - 90+ CRI</b>	<b>20D - 20° <sup>1</sup></b> <b>40D - 40°</b> <b>60D - 60°</b>	<b>UNV - 120/277V</b> <b>120 - 120V</b> <b>347 - 347V <sup>2</sup></b>

DRIVER	FLANGE TYPE	BEVELED INSERT	HOUSING TYPE
<b>DIM</b> - 0-10V (100-1%) <b>LE</b> - PHASE DIM <sup>3</sup> <small>(TRIAC/ELV, 100-1%)</small> <b>D01</b> - 0-10V (100-0.1%) <b>DALI</b> - DALI (100-1%) <sup>4</sup> <b>DMX</b> - DMX (100-0%) <b>DHL2</b> - LUTRON HI-LUME LDE1 <small>(1% ECOSYSTEM)</small>	<b>WT</b> - WHITE TRIM <b>BT</b> - BLACK TRIM <b>ST</b> - SILVER TRIM <b>XTR</b> - TRIMLESS <small>(MUD-IN DRYWALL)</small> <b>MWF</b> - FLANGELESS <sup>5</sup> <small>MILLWORK</small>	<b>WI</b> - WHITE <b>BI</b> - BLACK <b>SI</b> - SILVER	<b>RMD</b> - REMODEL (NON-IC) <b>NCF</b> - NEW CONSTRUCTION <small>FRAME (NON-IC)</small> <b>SH</b> - SHALLOW HOUSING <sup>6</sup> <small>(IC RATED &amp; CP RATED)</small> <b>NC</b> - NEW CONSTRUCTION <small>HOUSING</small> <b>IC</b> - NEW CONSTRUCTION <sup>6</sup> <small>IC HOUSING</small>  <small>NCF and SH housings ship with nailer type bar hangers. NC and IC housings available with optional C-channel bar hangers</small>

OPTIONS
<b>AWN<sup>7</sup></b> - LUTRON ATHENA RF NODE <sup>7</sup> <b>SF</b> - SOFTENING LENS (SUPPLIED STANDARD) <b>HX</b> - HEXCELL LOUVER <b>SB</b> - SANDBLASTED LENS <b>LS</b> - LINEAR SPREAD LENS <b>WL</b> - WET LOCATION RATED <b>CP</b> - CHICAGO PLENUM <sup>8</sup> <b>BH</b> - C-CHANNEL BAR HANGERS <b>EMR</b> - EMERGENCY BATTERY (REMOTE) <sup>9</sup> <b>EMB</b> - INTEGRAL EMERGENCY BATTERY <sup>10</sup> <small>(ABOVE CEILING ACCESS REQUIRED)</small>  <small>Maximum 2 optical accessories</small>



Lutron Athena Wireless Node (AWN) available with DIM (0-10V) driver option  
See page 8 for more details

- <sup>1</sup> 20D reflector available up to 750lm
- <sup>2</sup> 347 available in "DIM" 0-10V only (100-1%)
- <sup>3</sup> Phase dimming options available in 120V only
- <sup>4</sup> DALI-2 (Type 6) provided as standard
- <sup>5</sup> MWF not available with Remodel (NON-IC)
- <sup>6</sup> Shallow Housing available up to 750lm. New Construction IC housing available up to 1000lm
- <sup>7</sup> Available with DIM or driver option. Available with NCF (New construction frame) and RMD (Remodel) housings only. Not available with EMR or EMB
- <sup>8</sup> Chicago Plenum option available with Shallow Housing (750lm max) and New Construction Housing
- <sup>9</sup> Enclosure supplied with Emergency Battery and driver. Installed remotely by others. Not accessible through fixture aperture. LED operates at 6500K
- <sup>10</sup> Available with NCF housing option only. Above ceiling access required. Not accessible through fixture aperture. LED operates at 6500K

## PERFORMANCE

LUMEN OUTPUT	DELIVERED LUMENS	SYSTEM WATTS	EFFICACY (LPW)
750	750	11.7	64
1000	1000	16.1	62
1250	1250	20.7	60
1500	1500	26.6	56

BASED ON 90+ CRI, 3000K, 40D OPTIC WITH SOFTENING LENS  
Lumen output and actual wattage may vary +/- 5%

## HOUSING

Remodel, new construction frame, shallow housing, new construction and IC housing options available  
Maximum ceiling thickness of 1.5". Consult factory for modifications  
All housing options (except millwork) designed to be easily converted in field to trim or trimless with minimal components  
Housing rated for #12 AWG (4 in, 4 out), 90°C conductors and through branch wiring

## BEVELED INSERT

Cast aluminum beveled insert with matte powder coated finish  
Regressed LED source for enhanced glare control

## TRIM

Machined aluminum trim flange with matte powder coated finish and minimal 0.375" overlap

## TRIMLESS

Mudding flange features a perforated surface for easy mud-in application  
Integral blocking support provided to ensure fixture is properly secured within ceiling structure

## OPTICS

Proprietary anodized, aluminum reflectors  
Beam angle available in 20°, 40°, and 60°  
Reflectors are field replaceable (20° reflector not interchangeable)  
Softening lens supplied standard  
0° - 40° lockable tilt and 360° lockable rotation (center beam optimization)

## LED SYSTEM

Standard 90+ CRI  
Dim to Warm (3000K-1800K)  
Color consistency <3 SDCM  
L90 > 42,000 hours

## MULTIPLIERS

BEAM ANGLE	
20D	1.17
40D	1.00
60D	0.97
90D	0.84

## ELECTRICAL

Standard 0-10V, constant current drivers  
100-1% dimming range and >0.9 power factor  
Standard 120/277V universal voltage with several driver options  
120V Forward Phase/Reverse Phase driver option (100-1%)  
Integral drivers are easily accessible through luminaire aperture

## EMERGENCY

7W output for 90 minutes (+/- 450lm at 90+ CRI). Title 24 Certified  
Integral emergency battery (above ceiling access required)  
Remote emergency battery (not accessible through fixture aperture)  
Maximum remote mounting distance:  
3000lm or below - 50ft (12AWG) or 25ft (14AWG)  
Caution: Emergency Battery utilizes more than one power source and servicing should be performed by qualified personnel

## MOUNTING

Trim fixture designed for use in drywall, wood, acoustic, and other architectural ceilings  
Trimless fixture designed for use in drywall, mud-in ceiling applications  
Recommended cut-out for Millwork Flangeless option (3.625"x3.625")  
Recommended cut-out for other housing options (3.938"x3.938")  
New construction frame and IC rated shallow housing ship with nailer type bar hangers (14" to 26" extension)  
Optional C-Channel bar hangers available for NC and IC housing options

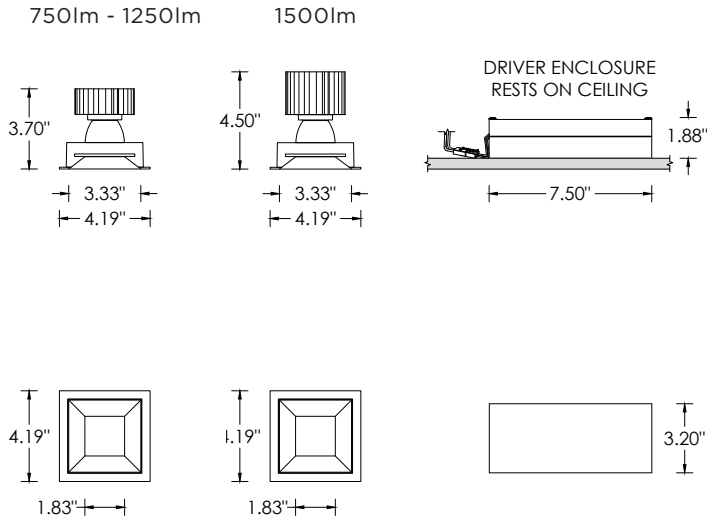
## LISTING

ETL listed and conforms to UL1598 standard  
Certified to CSA22.2 NO.250.0.  
Rated for dry or damp locations

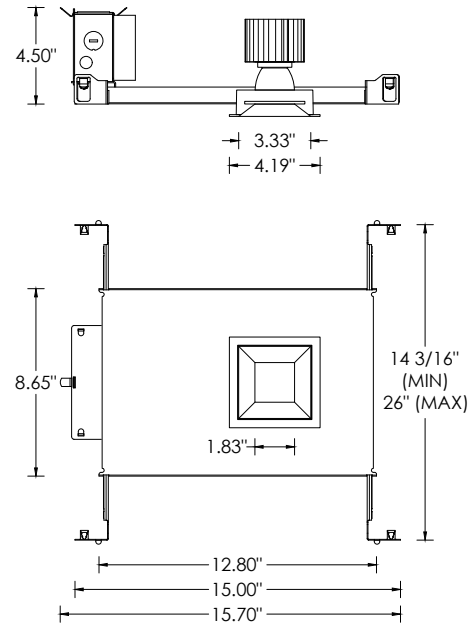
## WARRANTY

5 year limited warranty  
LED system rated for operation in ambient environments up to 25°C

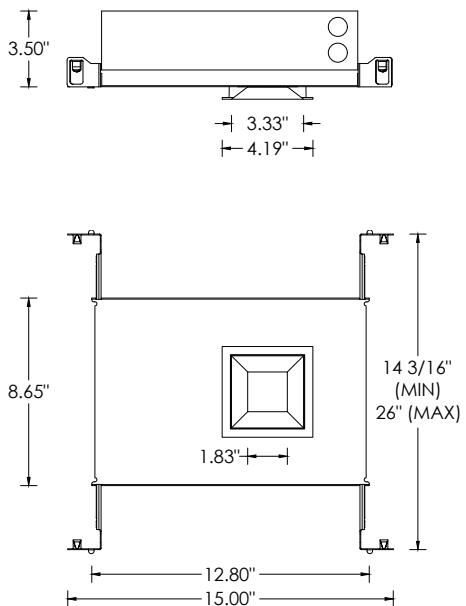
**RMD - REMODEL (NON-IC)**



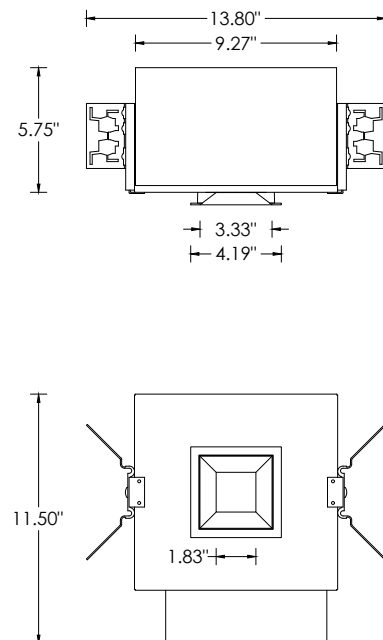
**NCF - NEW CONSTRUCTION FRAME (NON-IC)**



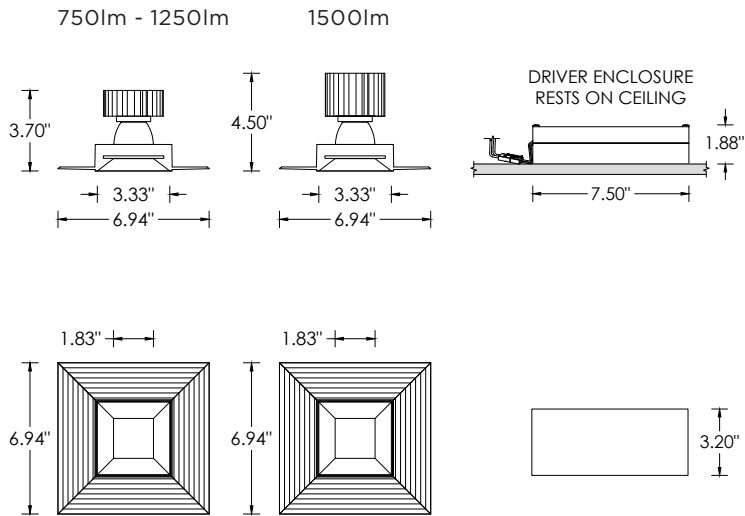
**SH - SHALLOW HOUSING (750LM MAX)  
(IC RATED AND CP RATED)**



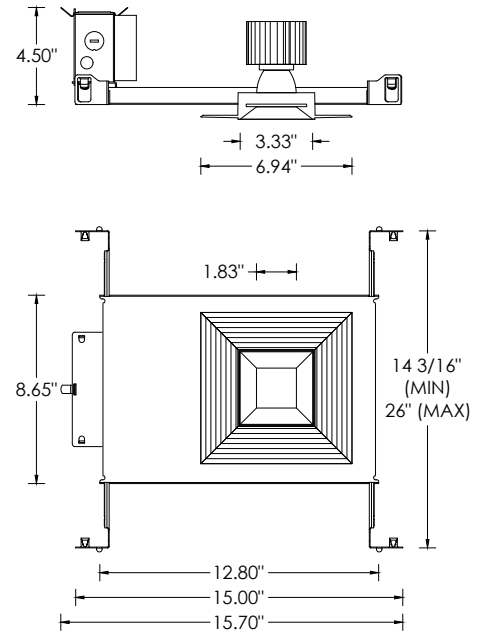
**NC- NEW CONSTRUCTION HOUSING (NON-IC AND CP RATED)  
IC - NEW CONSTRUCTION IC HOUSING (1000LM MAX)**



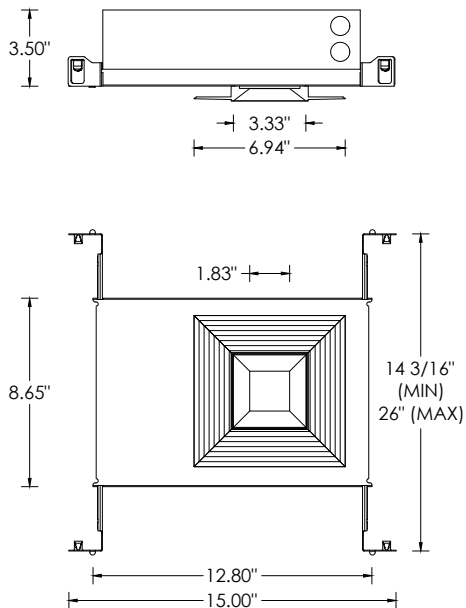
**RMD - REMODEL (NON-IC)**



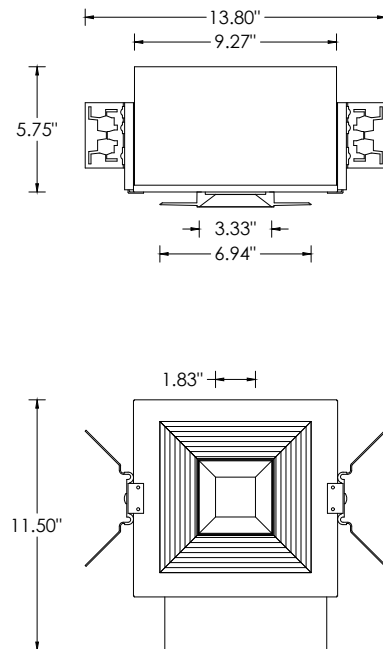
**NCF - NEW CONSTRUCTION FRAME (NON-IC)**



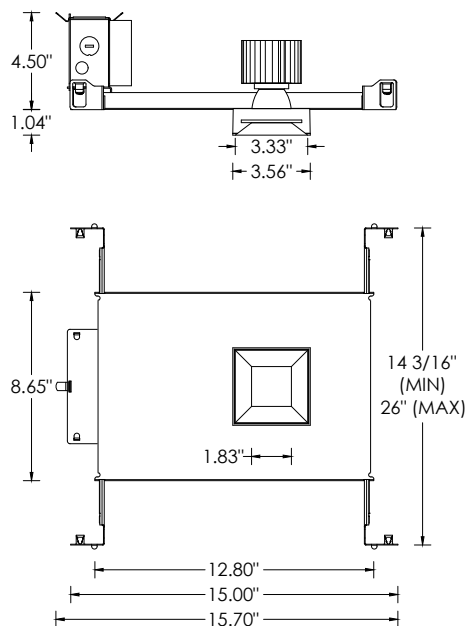
**SH - SHALLOW HOUSING (750LM MAX)**  
**(IC RATED AND CP RATED)**



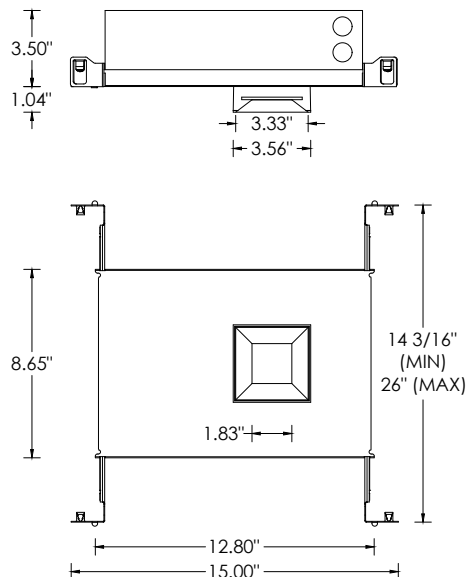
**NC- NEW CONSTRUCTION HOUSING (NON-IC AND CP RATED)**  
**IC - NEW CONSTRUCTION IC HOUSING (1000LM MAX)**



**NCF - NEW CONSTRUCTION FRAME (NON-IC)**

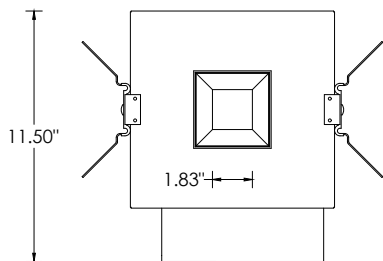
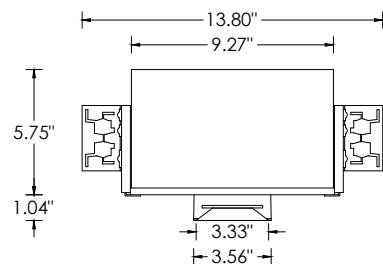


**SH - SHALLOW HOUSING (750LM MAX)**  
(IC RATED AND CP RATED)

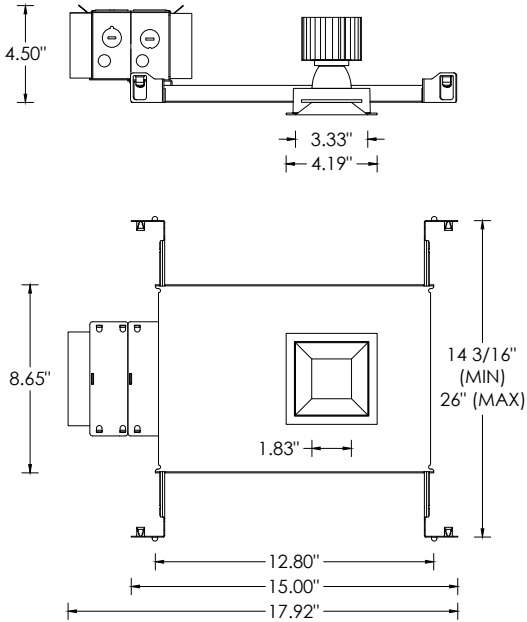


**NC- NEW CONSTRUCTION HOUSING (NON-IC AND CP RATED)**

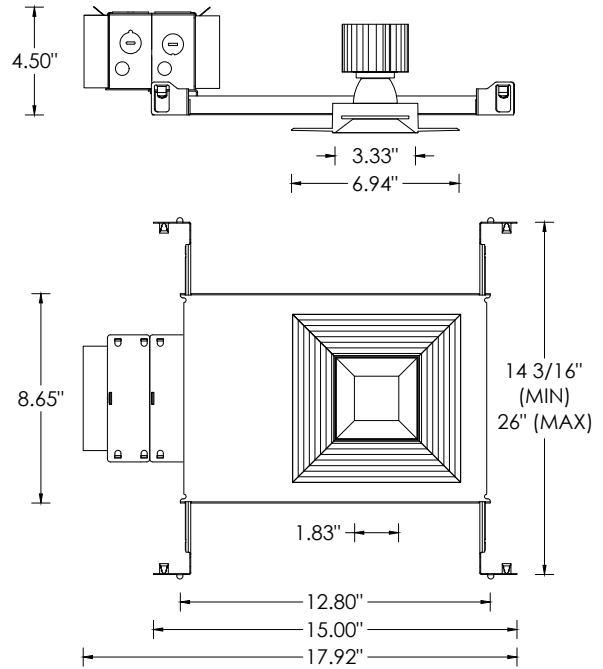
**IC - NEW CONSTRUCTION IC HOUSING (1000LM MAX)**



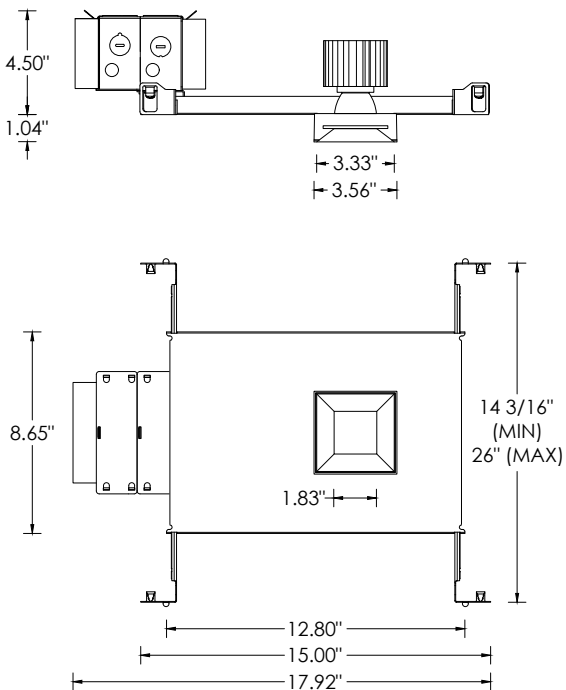
**TRIM**



**XTR - TRIMLESS (MUD-IN DRYWALL)**



**MWF - FLANGELESS MILLWORK**

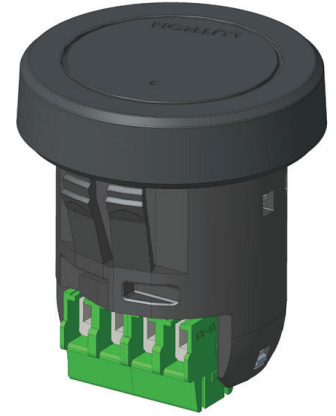


The Athena wireless node (AWN) is a radio frequency (RF) device that enables simple, digital control of individual light fixtures in an Athena or myRoom XC control system. AWN is offered as a factory-installed RF control option across select 3G luminaires.

The Athena wireless processor or Clear Connect gateway – Type X is required to operate an Athena wireless node in an Athena or myRoom XC control system via a simple setup process using an iOS® or Android® compatible app. This enables these fixtures to be controllable by other Lutron wall controls, keypads, sensors, Pico remote controls, etc



**AWN**  
RF NODE ONLY  
FACTORY-INSTALLED  
FOR INDIVIDUAL  
FIXTURE CONTROL



## HOUSING AND DRIVER COMPATIBILITY

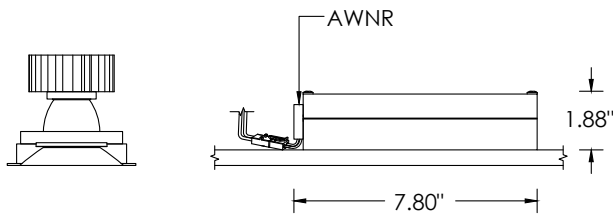
Housing types:

- NCF (New Construction, non-IC)
- RMD (Remodel, non-IC)

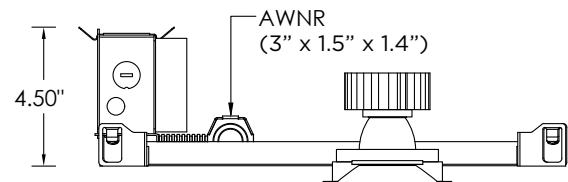
Driver / dimming types:

- DIM - 0-10V (100-1%)

### RMD - REMODEL (NON-IC)



### NCF - NEW CONSTRUCTION FRAME (NON-IC)



## DEFAULT BEHAVIOR PRIOR TO PROGRAMMING

Light level defaults to 100%

Device runs an unprogrammed startup sequence until added to the Athena system

## RF PLACEMENT (FIELD GUIDELINE)

Each node should be installed within 25 ft (7.6 m) of two or more Clear Connect – Type X devices (nodes / gateways / processors)  
Follow Lutron Athena design guidelines for device density and coverage

## SERVICING

Accessible through luminaire aperture

If the Awnr node is replaced, it must be re-added / re-commissioned within the Athena system by the controls contractor.