

3G LIGHTING

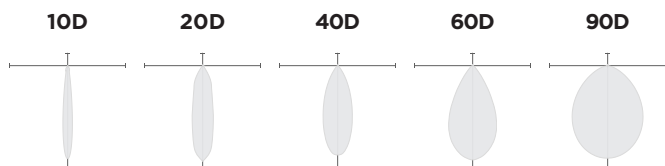
3G-PDL45RM5

4" MINI MADISON CYLINDER
7" AND 11" HEIGHT

4" diameter high performance, Mini Madison adjustable cylinder
Solid aluminum double gimbal with dual axis adjustability
Standard 95+ CRI LED system with performance up to 143 LPW
Delivered lumen range up to 2250lm at 95+ CRI
2" Regressed LED source for enhanced glare control
10° to 90° beam angle options suitable for various applications
Extruded aluminum construction with no visible hardware
Companion to 3G's Madison product family



OPTICS



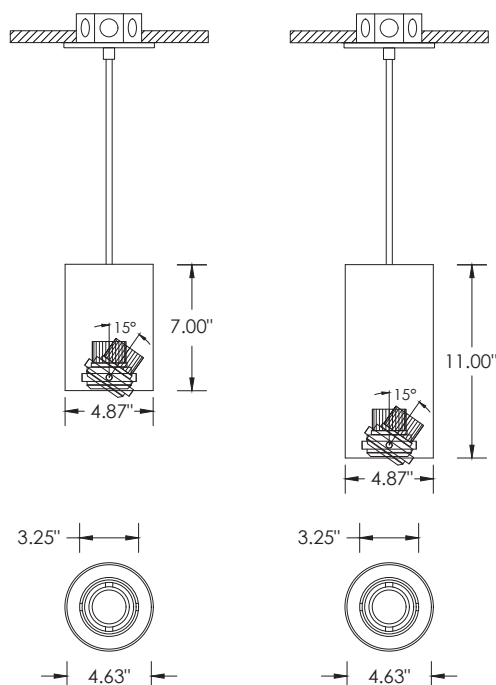
PERFORMANCE

LUMEN OUTPUT	DELIVERED LUMENS	SYSTEM WATTS	EFFICACY (LPW)
1000	1000	8.5	117
1500	1500	13.5	111
2000	2000	18.5	108
2250	2250	21.2	106

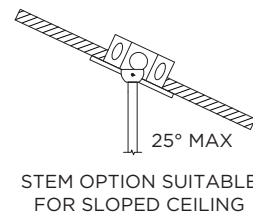
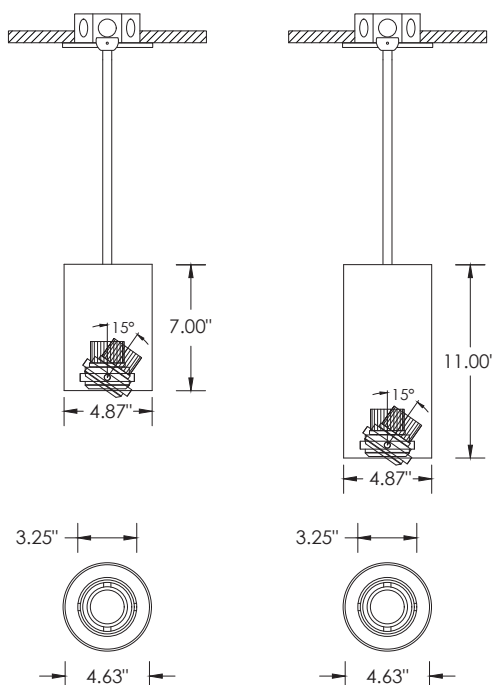
BASED ON 95+ CRI, 3500K, 40D OPTIC
Lumen output and actual wattage may vary +/- 5%

DIMENSIONS

CABLE SUSPENSION



STEM SUSPENSION



LUMEN OUTPUT	A	B
1000lm to 2250lm	15°	15°

PROJECT:		TYPE:	
CATALOG#:		DATE:	QTY:

CAT. NO	FIXTURE HEIGHT	LUMEN OUTPUT	CRI	COLOR TEMP	BEAM ANGLE
3G-PDL45RM5	7H - 7" HEIGHT	10 - 1000 LUMENS	H95 - 95+ CRI	27K - 2700K	10D - 10° ¹
	11H - 11" HEIGHT	15 - 1500 LUMENS		30K - 3000K	20D - 20°
		20- 2000 LUMENS		35K - 3500K	40D- 40°
		22 - 2250 LUMENS		40K- 4000K	60D- 60°
					90D- 90° *
		All lumen outputs are delivered lumens at 95+ CRI		*90D optic supplied with lens Not available with other lens options	

VOLTAGE	DRIVER	HOUSING FINISH	GIMBAL FINISH	CANOPY TYPE
UNV - 120/277V 120 - 120V 347 - 347V ²	DIM - 0-10V (100-1%) LE - PHASE DIM ³ (TRIAC/ELV, 100-1%) D01 - 0-10V (100-0.1%) DALI - DALI (100-1%) ⁴ DHL2 - LUTRON HI-LUME LDE1 ⁵ (1% ECOSYSTEM) DMX - DMX (100-0%) ⁵	WH - WHITE BK - BLACK SV - SILVER CF - CUSTOM COLOR	NG - NATURAL ALUMINUM BG - BLACK WG - WHITE	CN - CANOPY (STANDARD) CF - CONDUIT FEED CANOPY

CANOPY FINISH	SUSPENSION TYPE	SUSPENSION LENGTH	OPTIONS
WCF - WHITE (STANDARD) BCF - BLACK SCF - SILVER	WC - WHITE CABLE BC - BLACK CABLE RSW - WHITE RIGID STEM RSB - BLACK RIGID STEM RSS - SILVER RIGID STEM RSC - CUSTOM RAL STEM	C60 - 60" CABLE C120 - 120" CABLE S48 - 48" STEM S96 - 96" STEM All suspension options are field cuttable	SF - SOFTENING LENS * SB - SANDBLASTED LENS LS - LINEAR SPREAD LENS HXB - HEXCELL LOUVER EMR - EMERGENCY BATTERY ⁶ (REMOTE) *Softening lens not provided with 90D optic Maximum 1 optical accessory

- ¹ 10D and 20D reflector available up to 2000lm
² 347 available in "DIM" 0-10V only (100-1%). Not available with 7" model
³ Phase dimming options available in 120V only
⁴ DALI-2 (Type 6) provided as standard
⁵ DMX and DHL2 not available with 7H model
⁶ Supplied with enclosure with Emergency Battery and driver. Installed remotely by others. Not accessible through fixture aperture

PERFORMANCE

LUMEN OUTPUT	DELIVERED LUMENS	SYSTEM WATTS	EFFICACY (LPW)
1000	1000	8.5	117
1500	1500	13.5	111
2000	2000	18.5	108
2250	2250	21.2	106

BASED ON 95+ CRI, 3500K, 40D OPTIC
Lumen output and actual wattage may vary +/- 5%

HOUSING

Extruded aluminum housing with powder coated finish
Twist and lock construction with no visible hardware

BEVELED INSERT

Machined aluminum beveled insert
Solid aluminum double gimbal with dual axis adjustability (15°x15°)

OPTICS

Proprietary anodized, aluminum reflectors
Beam angle available in 10°, 20°, 40° and 60°, and 90°
Reflectors are field replaceable
10° and 20° reflectors are multi-faceted (not interchangeable with other options)

LED SYSTEM

Standard 95+ CRI
Color consistency <2 SDCM
Available in 27K, 30K, 35K, and 40K
L90 > 50,000 hours

ELECTRICAL

Standard 0-10V, constant current drivers
100-1% dimming range and >0.9 power factor
Standard 120/277V universal voltage with several driver options
120V Forward Phase/Reverse Phase driver option (100-1%)
Integral drivers are easily accessible through luminaire aperture

MULTIPLIERS

BEAM ANGLE	
10D	0.97
20D	1.20
40D	1.00
60D	1.02
90D	0.90

COLOR TEMP	
2700K	0.98
3000K	1.00
3500K	1.00
4000K	1.02

MOUNTING

Standard, 18-gauge, 5 conductor single circuit braided power feed cable (black and white finish)
1/2" diameter rigid stem option with sloped ceiling adapter (field cuttable)
All hardware included for mounting to 4" octagonal junction box
Canopy provided in white finish as standard
Conduit feed cut-out canopy option designed to mount to 4" octagonal junction box

EMERGENCY

7W output for 90 minutes (+/- 850lm at 95+ CRI). Title 24 Certified
Remote emergency battery (not accessible through fixture aperture)
Maximum remote mounting distance: 50ft (12AWG) or 25ft (14AWG)
Caution: Emergency Battery utilizes more than one power source and servicing should be performed by qualified personnel

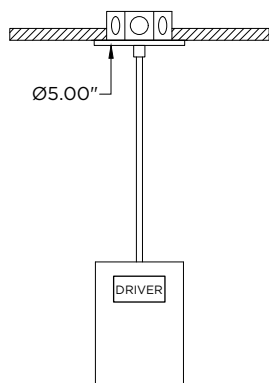
LISTING

ETL listed and conforms to UL1598 standard
Certified to CSA22.2 NO.250.0.
Rated for dry or damp locations

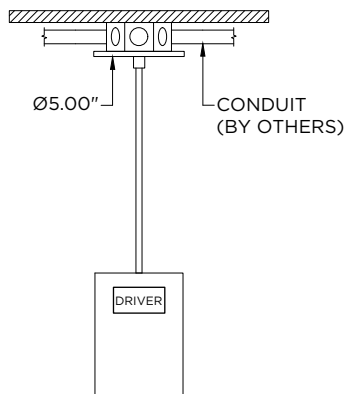
WARRANTY

5 year limited warranty
LED system rated for operation in ambient environments up to 25°C

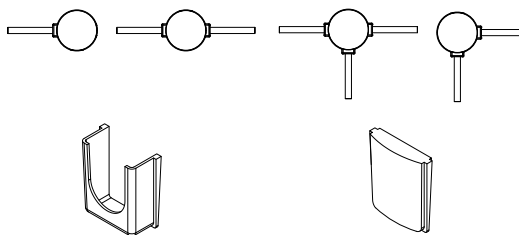
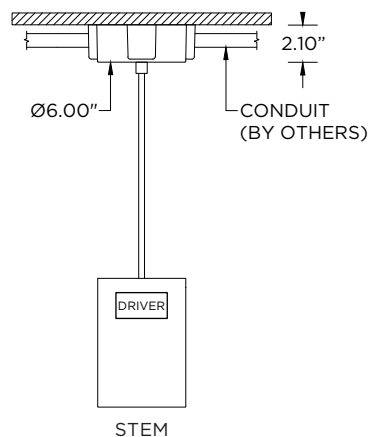
CN - STANDARD CANOPY
RECESSED J-BOX (BY OTHERS)



CN - STANDARD CANOPY
SURFACE MOUNT J-BOX (BY OTHERS)



CF - CONDUIT FEED CANOPY
SURFACE MOUNT J-BOX (BY OTHERS)



CONDUIT COVER
3 PROVIDED WITH EACH
CONDUIT FEED CANOPY

BLANK
2 PROVIDED WITH EACH
CONDUIT FEED CANOPY