

3G LIGHTING

3G-1RLI-WC

1.5" RECESSED LINEAR
WALL TO CEILING



Narrow 1.5" aperture with one piece extruded aluminum housing
Seamless wall to ceiling illumination
Proprietary alignment mechanism
Suitable for drywall, wood, grid ceiling, and other architectural ceiling systems
High-efficacy LED performance up to 117 lumens per watt
Delivered lumen range up to 1020 lumens per foot
Extruded acrylic lens with optimal performance and glare control
1% dimming standard with several driver options

PROJECT:		TYPE:	
CATALOG#:		DATE:	QTY:

CAT. NO	LUMEN OUTPUT	CRI	COLOR TEMP	VOLTAGE
3G-1RLI-WC	D250 - 250 LM/FT ¹ D500 - 500 LM/FT D750 - 750 LM/FT D1000 - 1000 LM/FT ² DC___ - CUSTOM OUTPUT (SPECIFY LM/FT) * <small>*Specify custom lumen outputs in 50lm increments (ie: DC600, DC650, DC700) Custom output cannot exceed D1000</small>	S80 - 80+ CRI ³ H90 - 90+ CRI	27K - 2700K 30K - 3000K 35K - 3500K 40K - 4000K	UNV - 120/277V 347 - 347V ⁴

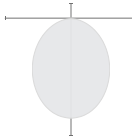
DRIVER	FLANGE TYPE (WALL)	FLANGE TYPE (CEILING)	LENS OPTION
DIM - 0-10V (100-1%) D01 - 0-10V (100-0.1%) DALI - DALI (100-1%) ⁵ DHL2 - LUTRON HI-LUME (1% ECOSYSTEM) DMX - DMX (100-0%)	WXTR - TRIMLESS (MUD-IN DRYWALL) WFX - FLANGELESS	CXTR - TRIMLESS (MUD-IN DRYWALL) CFX - FLANGELESS GCX - GRID CEILING * (UNIVERSAL MOUNT) <small>*Universal mounting brackets used for all grid ceiling types only. See mounting section for details</small>	FL - FLUSH LENS

OPTIONS	RUN TYPE
EMB - EMERGENCY BATTERY * (INTEGRAL) EMC - EMERGENCY CIRCUIT CP - CHICAGO PLENUM <small>*Minimum 4' section</small>	W ____ ' X C ____ ' (WALL TO CEILING) * W ____ ' X C ____ ' X W ____ ' (WALL TO CEILING TO WALL) <small>*Available in 1" increments</small>

- ¹ D250 (250LM/FT) not available in 2' length with DALI, D01, DMX, or DHL2. Specify minimum DC350 for those driver options
² D1000 (1000LM/FT) not available with H90 (90+ CRI)
³ S80 (80+ CRI) not available with 27K
⁴ 347 available in "DIM" 0-10V only (100-1%)
⁵ DALI-2 (Type 6) provided as standard. Please consult factory for DALI (Type 8) options

DELIVERED LUMENS PER FOOT BASED ON 80+ CRI 3500K LED SOURCE

LENS OPTION

FLUSH	DELIVERED LUMENS	SYSTEM WATTS	EFFICACY (LPW)
	250	2.3	107
	500	4.7	107
	750	7.0	108
	1000	9.6	104

LUMEN OUTPUT MULTIPLIERS

COLOR TEMP	80+ CRI	90+ CRI
2700K	N/A	0.78
3000K	0.97	0.83
3500K	1.00	1.00
4000K	1.02	1.02

HOUSING

Extruded aluminum housing with narrow 1.5" aperture
Individual units and continuous runs available in 1" increments as standard
Trimless model features a satin coat mudding flange for seamless ceiling integration
24-gauge LED reflector with high reflectance white powder coated finish
Standard polyester powder coated matte white finish

OPTICS

Extruded, satin acrylic lens designed for optimal performance and glare control. Up to 8' continuous

LISTING

ETL listed and conforms to UL1598 standard. Certified to CSA22.2
NO.250.0. Rated for indoor dry or damp locations
IC rated - Suitable for direct contact with insulation

WARRANTY

5 Year Warranty on LED and drivers
Manufacturer 1 Year Warranty for defects in material and workmanship under normal use
Ambient temperature at fixture should not exceed 25°C

ELECTRICAL

Standard 0-10V, constant current drivers with 100-1% dimming range and >0.9 power factor
Standard 120/277V universal voltage with several driver options
Luminaires are pre-wired with factory installed quick connects and branch circuit wiring
All drivers are integral and easily accessible through luminaire aperture
Minimum 4' and maximum 6' length for each integral emergency battery. 10W output for 90 minutes

LED SYSTEM

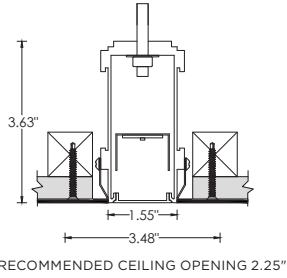
Proprietary LED system with color consistency <3 SDCM
Available in 27K, 30K, 35K, and 40K
Standard 80+CRI. Optional 90+CRI
R9 value of 56 for 90+CRI
L90 >60,000 hours
5 Year Warranty

MOUNTING

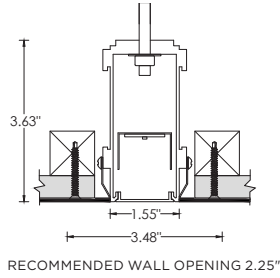
Housing suspended via 1/4" threaded rod or suspension cables (by others)
Toolless installation with 3G's proprietary mounting system
Internal, toolless joiner system (latch and hook) easily connects multiple sections together
LED reflectors remain within each fixture section during installation with 3G's click and lock spring system
Trimless fixture designed for use in drywall, mud-in ceiling applications
Flangeless fixture designed for use in wood ceilings. New construction only
Suitable for various grid ceiling applications (see mounting details)
Fixture weight: +/- 2.5 lb/ft

HARD CEILING

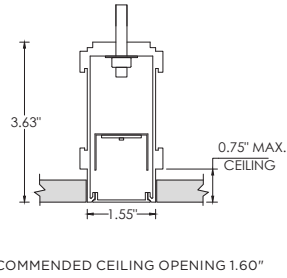
CXTR - TRIMLESS CEILING



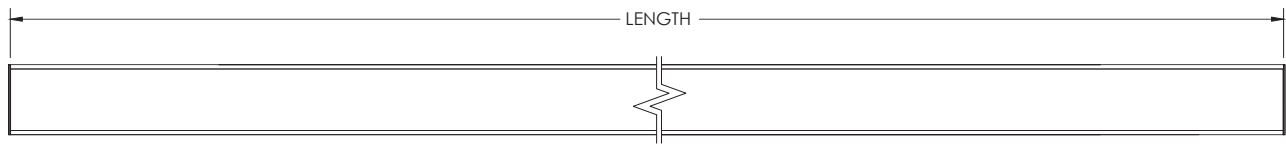
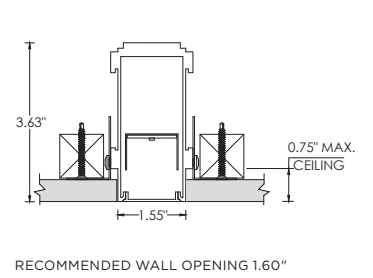
WXTR - TRIMLESS (DRYWALL)



CFX - FLANGELESS CEILING (NEW CONSTRUCTION)

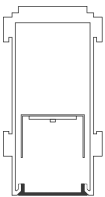


WFX - FLANGELESS WALL (NEW CONSTRUCTION)

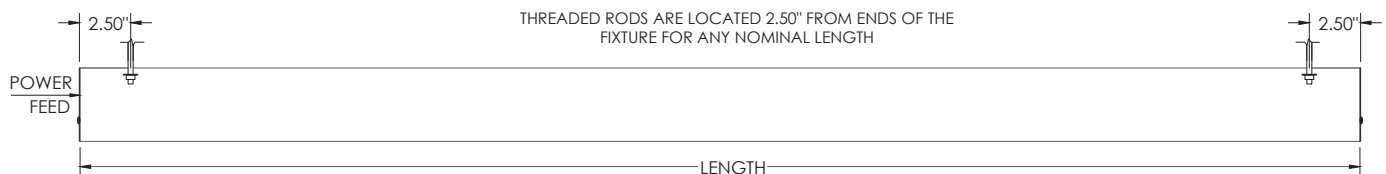
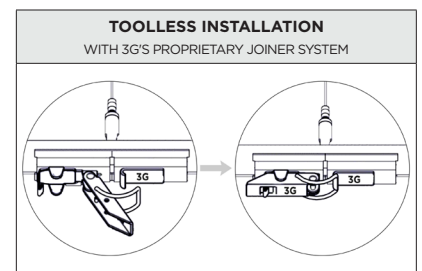


LENS OPTION

FL - FLUSH

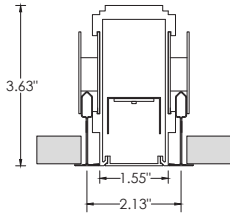


HARD CEILING : MOUNTING DETAILS

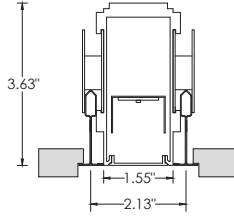


GRID CEILING

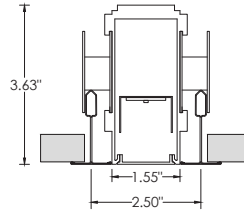
9L - 9/16" LAYIN



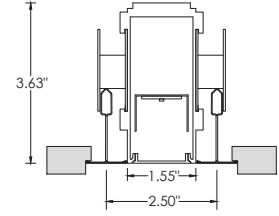
9TG - 9/16" TEGULAR



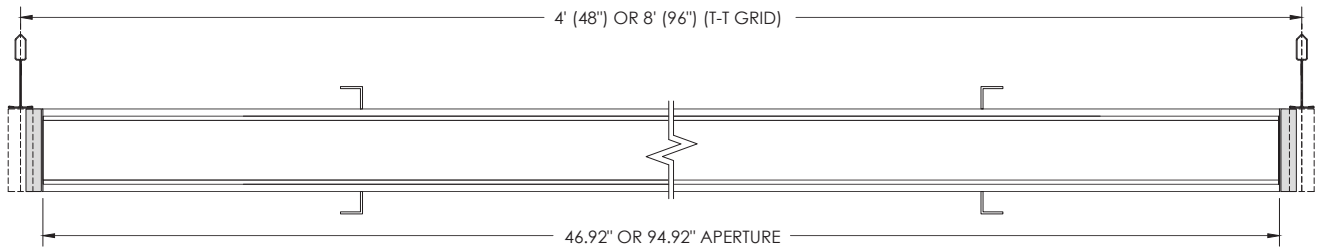
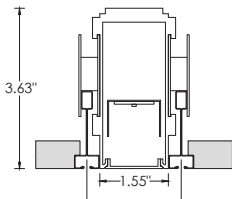
15L - 15/16" LAYIN



15TG - 15/16" TEGULAR



9ST - 9/16" SLOT TEE TEGULAR



GRID CEILING : MOUNTING DETAILS

