



3G-RMZ4WW

4" ZOIE WALL WASH DOWNLIGHT
RECESSED

4" linear wall wash downlight with narrow 1.14" aperture
Standard 90+ CRI LED system with performance up to 81 LPW
Delivered lumen range up to 1000lm at 90+ CRI
Proprietary wall wash optic and lens with enhanced glare control
Matte black and matte white louver finish
Companion to 3G's Zoie product family



PROJECT:					TYPE:			
CATALOG#:					DATE:		QTY:	

CAT. NO	LUMEN OUTPUT	CRI	COLOR TEMP	BEAM ANGLE	VOLTAGE
3G-RMZ4WW	05 - 500 LUMENS 10 - 1000 LUMENS <small>All lumen outputs are delivered lumens at 90+ CRI</small>	H90 - 90+ CRI	27K - 2700K 30K - 3000K 35K - 3500K 40K - 4000K	WW - WALL WASH	UNV - 120/277V 120 - 120V 347 - 347V ¹

DRIVER	FLANGE TYPE & LOUVER FINISH	HOUSING TYPE
DIM - 0-10V (100-1%) LE - PHASE DIM (TRIAC/ELV, 100-1%) ² RDIM - REMOTE 0-10V (100-1%) RD01 - REMOTE 0-10V (100-0.1%) RDALI - REMOTE DALI (100-1%) ³ RDHL2 - REMOTE LUTRON (1% ECOSYSTEM)	WT - WHITE TRIM & WHITE LOUVER BT - BLACK TRIM & BLACK LOUVER XTRW - TRIMLESS & WHITE LOUVER XTRB - TRIMLESS & BLACK LOUVER <small>*Trimless option is for mud-in drywall</small>	RMD - REMODEL HOUSING (INTEGRAL DRIVER) SH - SHALLOW HOUSING (INTEGRAL DRIVER)

OPTIONS
CP - CHICAGO PLENUM

¹ 347 available in "RDIM" REMOTE 0-10V only (100-1%)

² Phase dimming option available in 120V only

³ DALI-2 (Type 6) provided as standard. Please consult factory for DALI (Type 8) options

PERFORMANCE

LUMEN OUTPUT	DELIVERED LUMENS	SYSTEM WATTS	EFFICACY (LPW)
500	506	6.2	81
1000	1000	13.0	77

BASED ON 90+ CRI, 3500K, WALL WASH OPTIC
Lumen output and actual wattage may vary +/- 5%

HOUSING

Remodel and shallow housing options available
IC rated and Chicago Plenum options available
Maximum ceiling thickness of 1". Consult factory for modifications
Housing rated for #12 AWG (4 in, 4 out), 90°C conductors and through branch wiring

TRIM FLANGE

Aluminum trim flange with matte powder coated finish and minimal 0.300" overlap

TRIMLESS

Mudding flange features a perforated surface for easy mud-in application
Integral blocking support provided to ensure fixture is properly secured within ceiling structure

OPTICS

Proprietary high performance wall wash optic and lens
Uniform illumination across the top and down the wall
1.14" apertures with enhanced glare control
Matte black or matte white faceted louver finish

LED SYSTEM

Standard 90+ CRI
Color consistency <2 SDCM
Available in 27K, 30K, 35K, and 40K
L90 > 60,000 hours

MULTIPLIERS

COLOR TEMP	
2700K	0.92
3000K	0.97
3500K	1.00
4000K	0.98

ELECTRICAL

Standard 0-10V, constant current drivers
100-1% dimming range and >0.9 power factor
120V Forward Phase/Reverse Phase driver option (100-1%)
Integral drivers are easily accessible through luminaire aperture
Remote 120/277V universal voltage driver options

MOUNTING

Trim fixture designed for use in drywall, wood, acoustic, and other architectural ceilings
Trimless fixture designed for use in drywall, mud-in ceiling applications
Recommended ceiling cut-out for remodel fixture: 1.500" x 4.375"
Adjustable bar hangers extend from 14" to 26"

LISTING

ETL listed and conforms to UL1598 standard
Certified to CSA22.2 NO.250.0.
Rated for dry locations

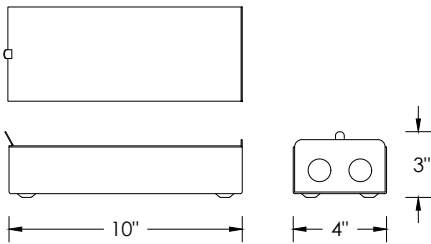
WARRANTY

5 year limited warranty
LED system rated for operation in ambient environments up to 25°C

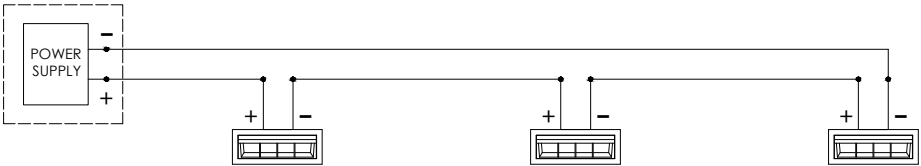
REMOTE POWER SUPPLY OPTIONS

3G DRIVER CODE	DIMMING METHOD	DIMMING RANGE	VOLTAGE	MAX. DISTANCE	3G-RMZ4WW (30.2W)
RDIM	0-10V	100-1%	120-277V	100ft (12AWG)	1 to 4
RDHL2	LUTRON ECOSYSTEM	100-0.1%	120-277V	100ft (12AWG)	1 to 4
RDALI	DALI	100-1%	120-277V	100ft (12AWG)	1 to 4
RD01	0-10V	100-0.1%	120-277V	100ft (12AWG)	1 to 4

REMOTE POWER SUPPLY ENCLOSURE

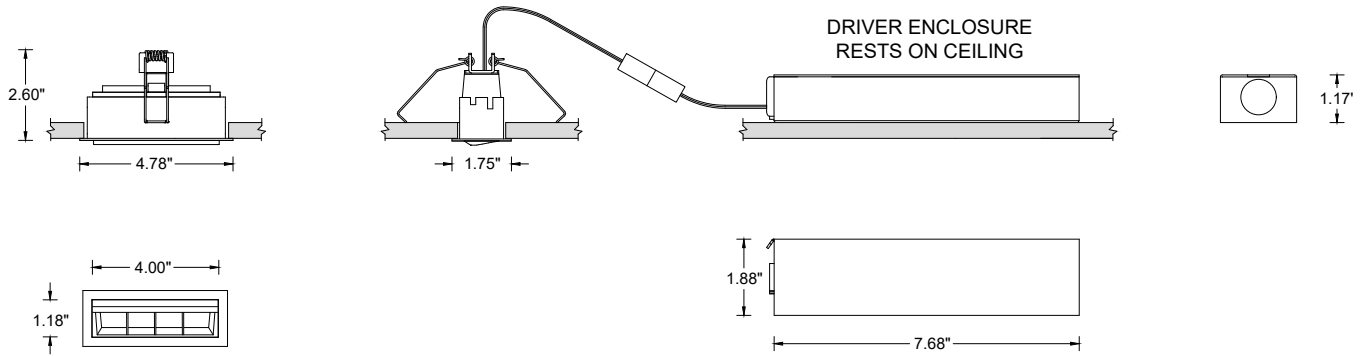


WIRING DIAGRAM



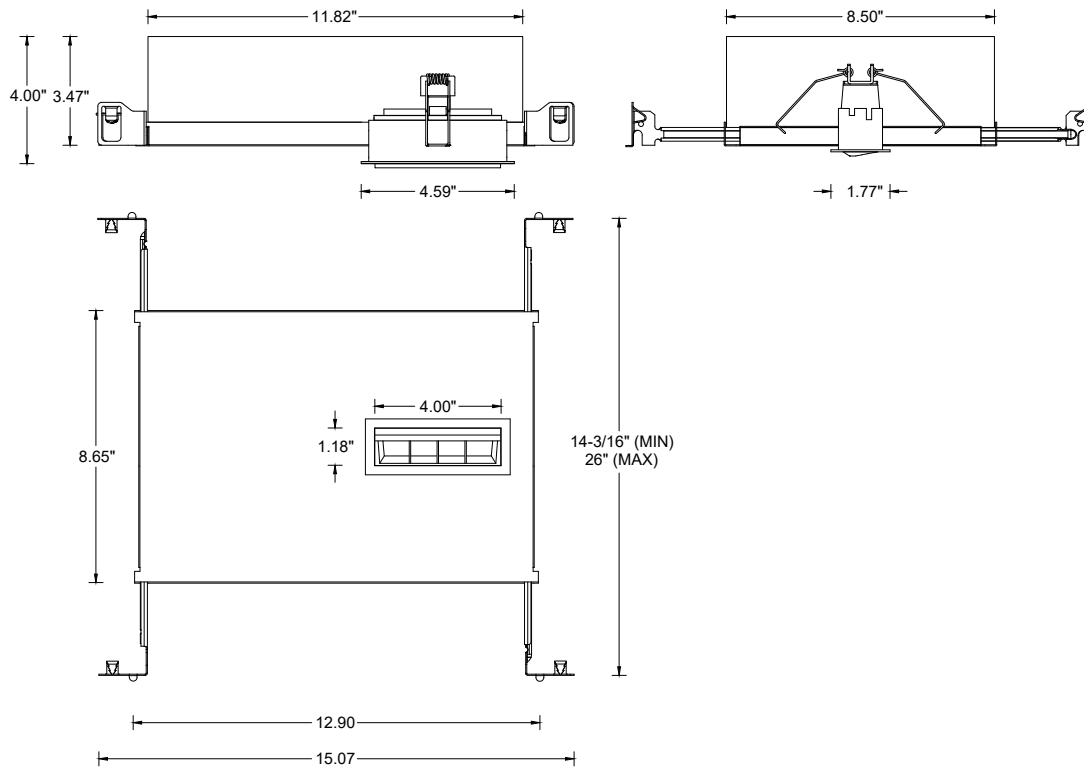
Multiple Zoie fixtures must be connected in parallel

RMD - REMODEL FIXTURE (NON-IC) WITH ENCLOSURE (INTEGRAL DRIVER)

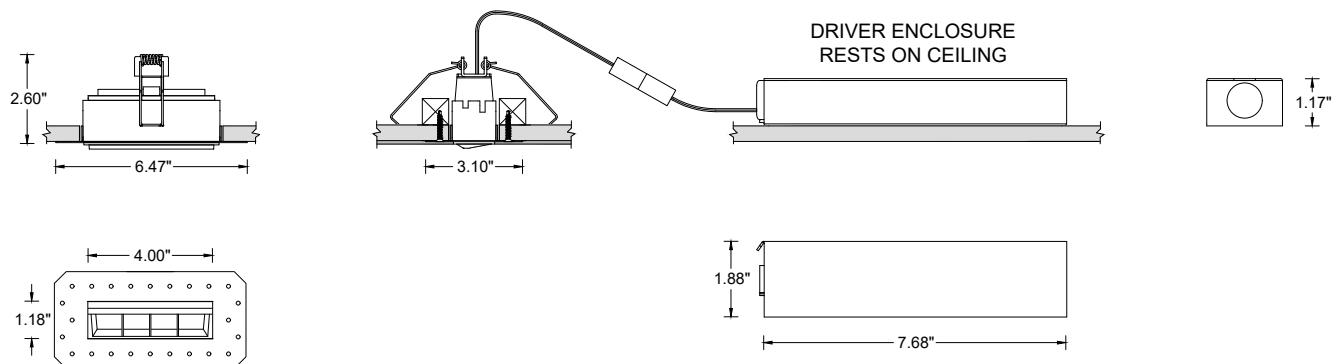


Recommended ceiling cut-out: 1.500" x 4.375"

SH - SHALLOW HOUSING (INTEGRAL DRIVER) (IC RATED AND CP RATED)



RMD - REMODEL FIXTURE (NON-IC) WITH ENCLOSURE (INTEGRAL DRIVER)



Recommended ceiling cut-out: 1.500" x 4.375"

SH - SHALLOW HOUSING (INTEGRAL DRIVER) (IC RATED AND CP RATED)

