

3.3" DOWNLIGHT CYLINDER - PENDANT

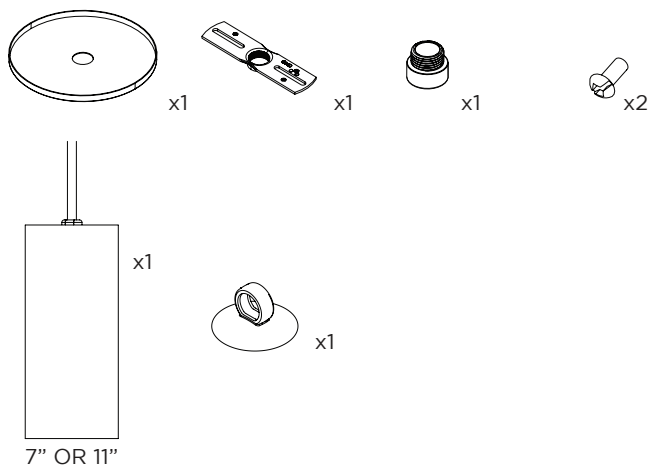
CABLE PENDANT MOUNT



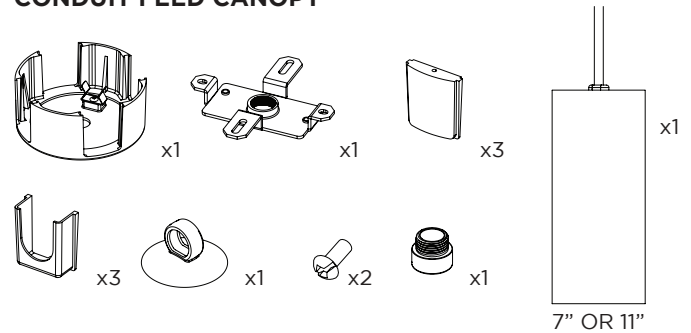
THE IMAGES SHOWN ARE FOR ILLUSTRATION ONLY AND MAY NOT BE AN EXACT REPRESENTATION OF THE PRODUCT

COMPONENTS

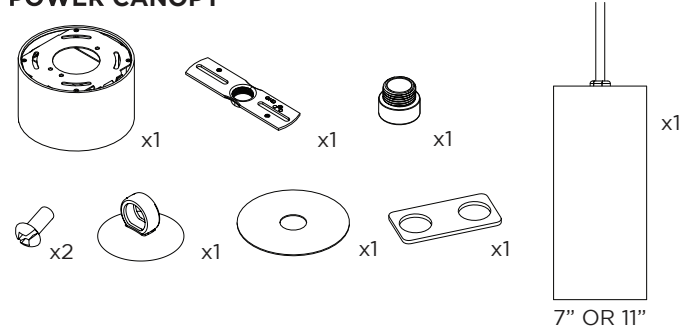
STANDARD CANOPY



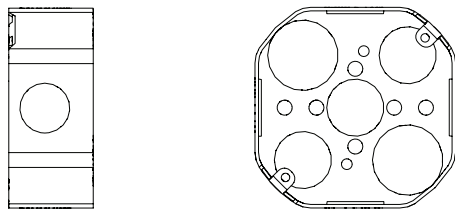
CONDUIT FEED CANOPY



POWER CANOPY

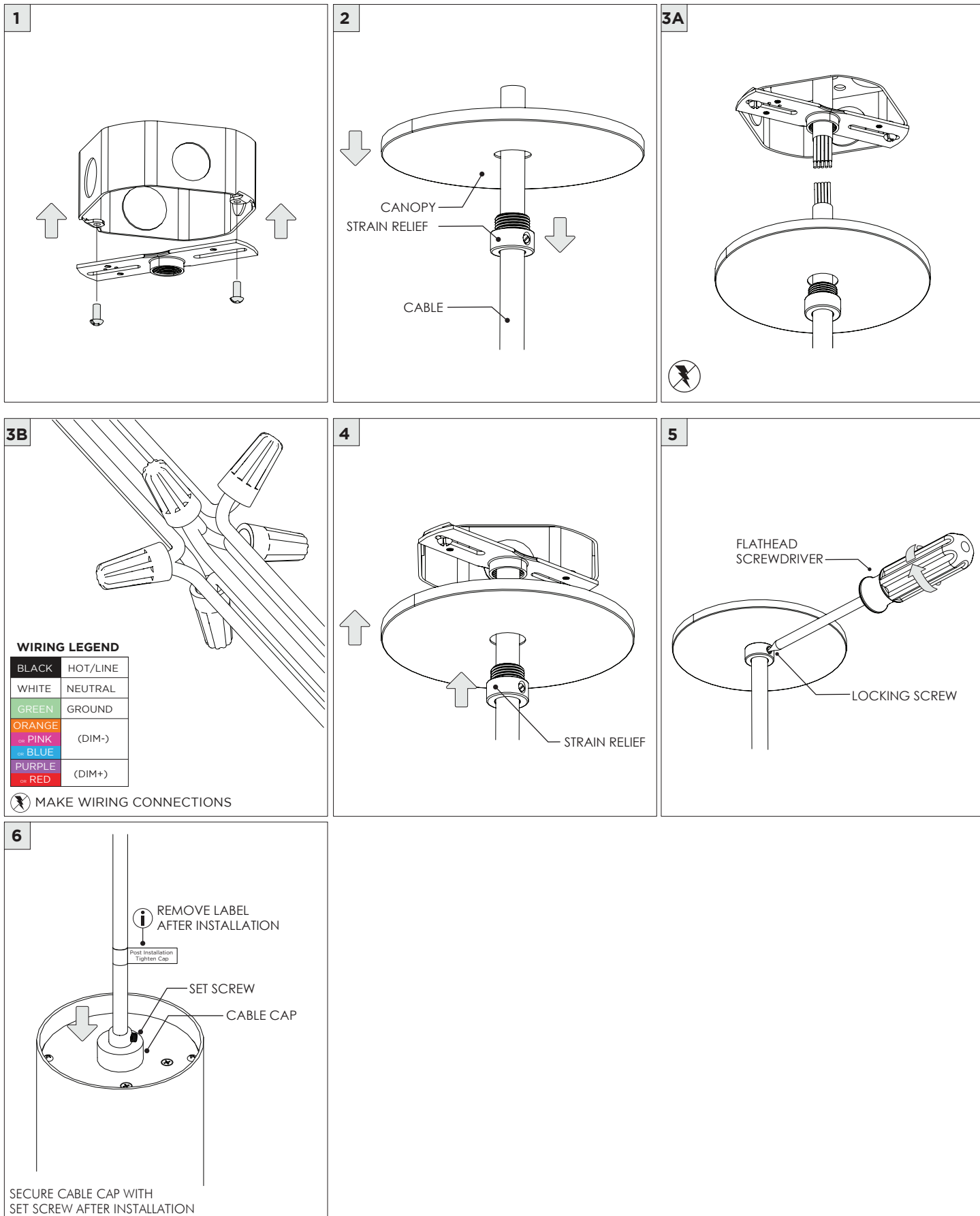


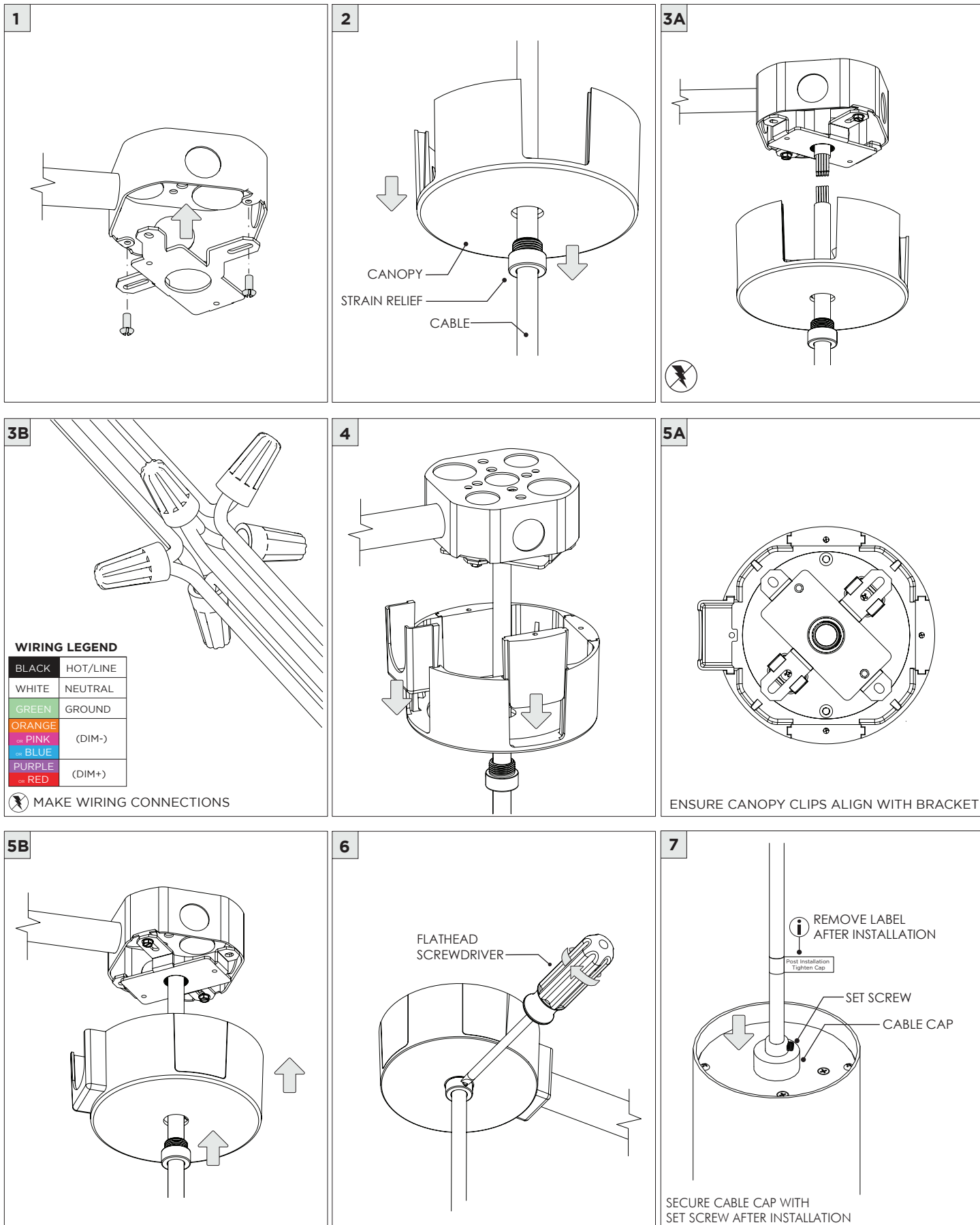
4" OCTAGONAL J-BOX REQUIRED FOR INSTALLATION

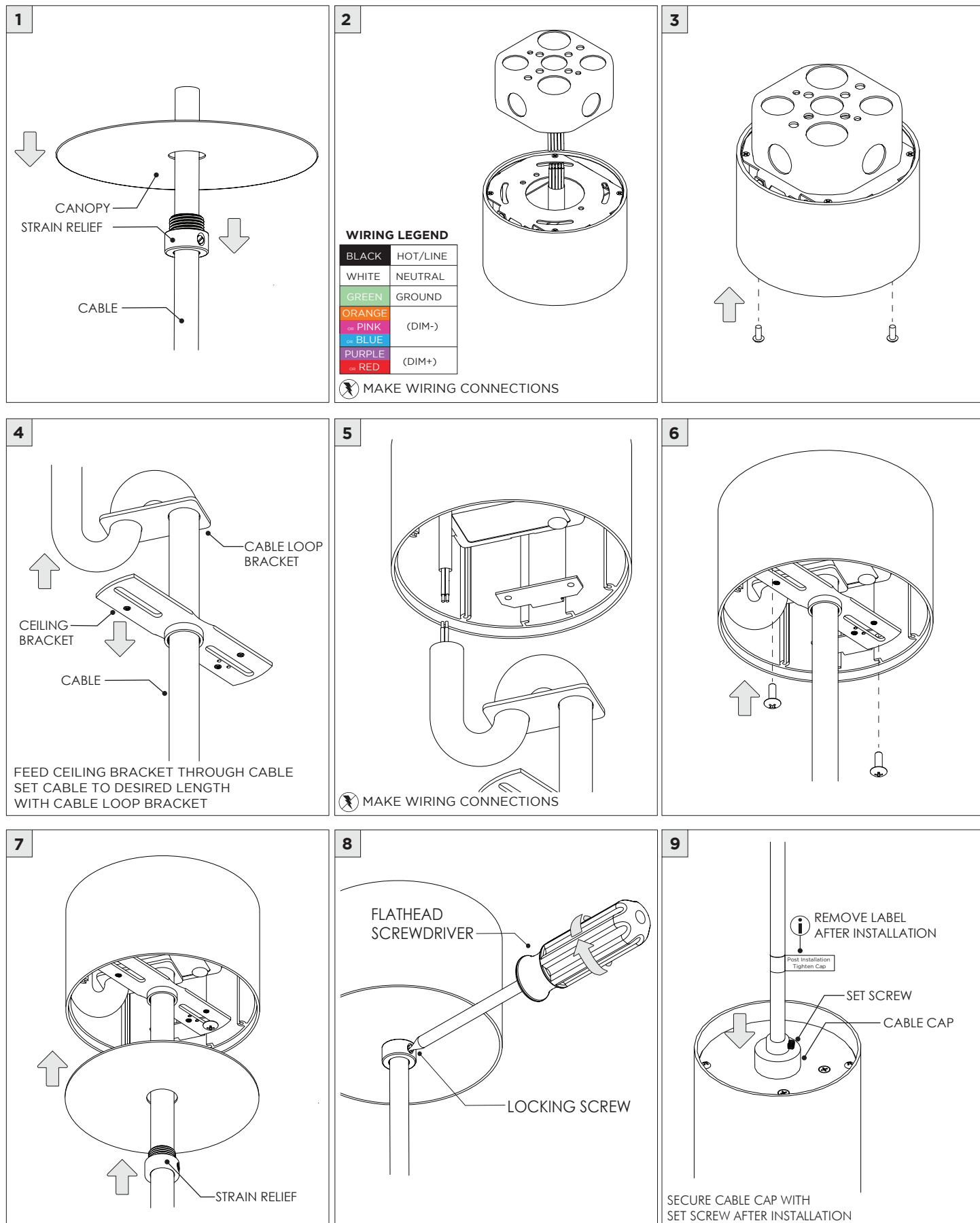


JUNCTION BOX (BY OTHERS)

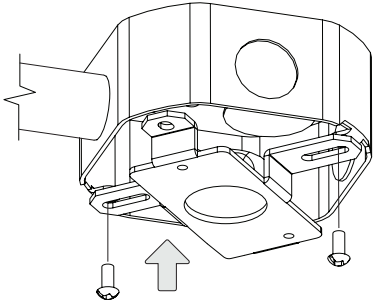
INSTRUCTION KEY	INFORMATION
⚠	ADDITIONAL
ⓘ	ATTENTION
⚡	POWER ON
⚡	POWER OFF
	INSTALLATION SHOULD ONLY BE PERFORMED BY A CERTIFIED ELECTRICIAN REFER TO LOCAL/NATIONAL CODES FOR PROPER INSTALLATION FAILURE TO FOLLOW INSTALLATION INSTRUCTION MAY VOID THE WARRANTY DO NOT TOUCH LEDS. LEDS MUST BE PROTECTED FROM MECHANICAL STRESS OR DEBRIS TURN OFF POWER DURING INSTALLATION OR SERVICING



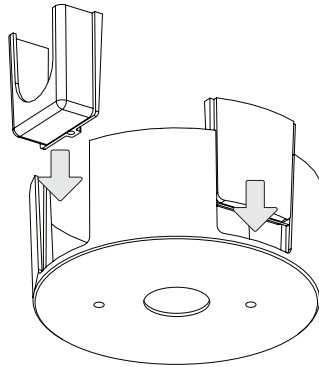




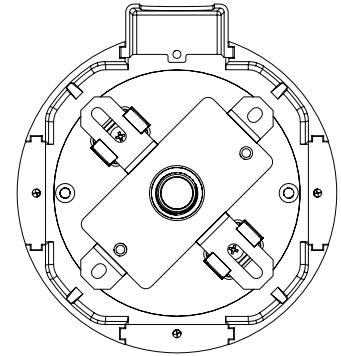
1 CONDUIT FEED CANOPY



2

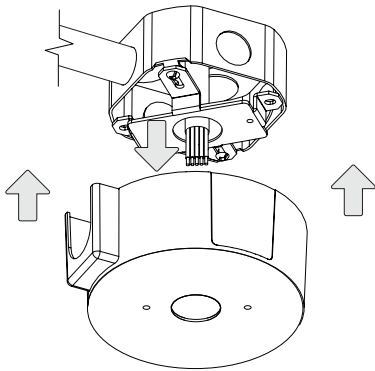


3



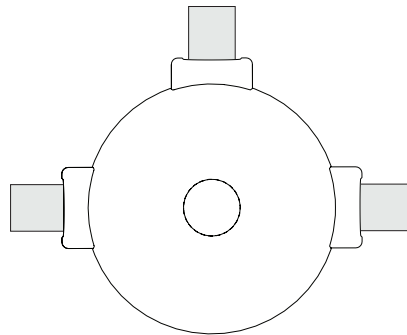
ENSURE CANOPY CLIPS ALIGN WITH BRACKET

4



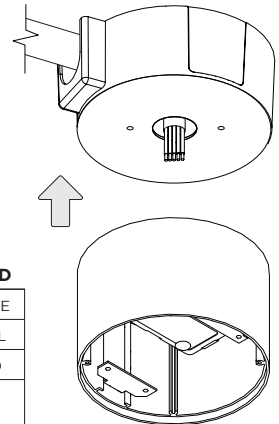
CONNECT CANDUIT CANOPY AND FEED
JUNCTION BOX WIRES THROUGH HOLE

5



! CANOPY IS SUITABLE FOR
MAXIMUM 3 CONDUIT FEEDS

6 POWER CANOPY

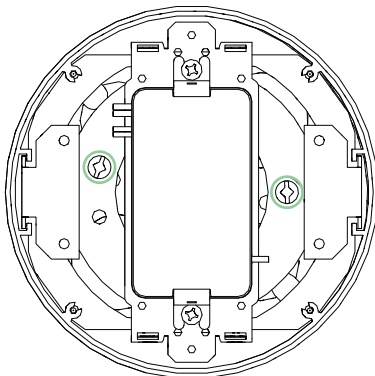


WIRING LEGEND

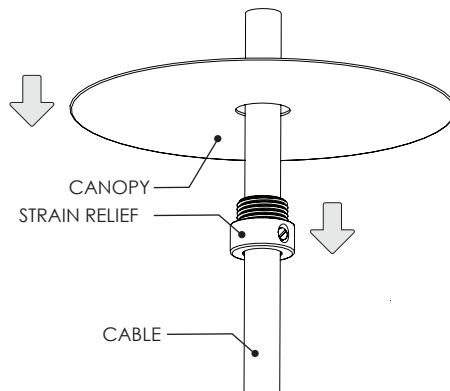
BLACK	HOT/LINE
WHITE	NEUTRAL
GREEN	GROUND
ORANGE	(DIM-)
PINK	(DIM-)
BLUE	(DIM-)
PURPLE	(DIM+)
RED	(DIM+)

⚡ MAKE WIRING CONNECTIONS

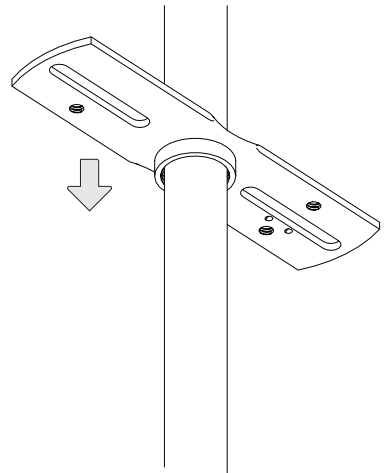
7

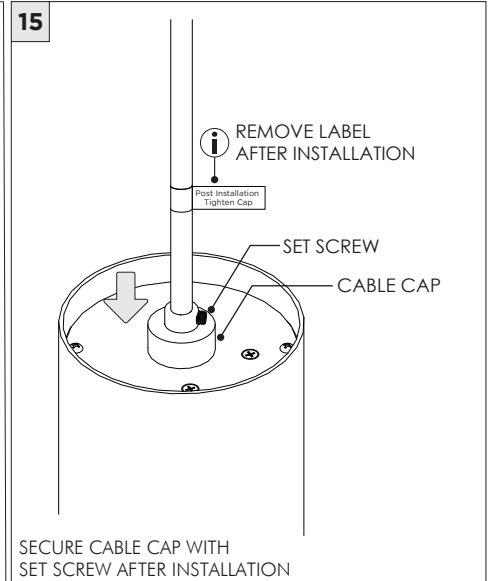
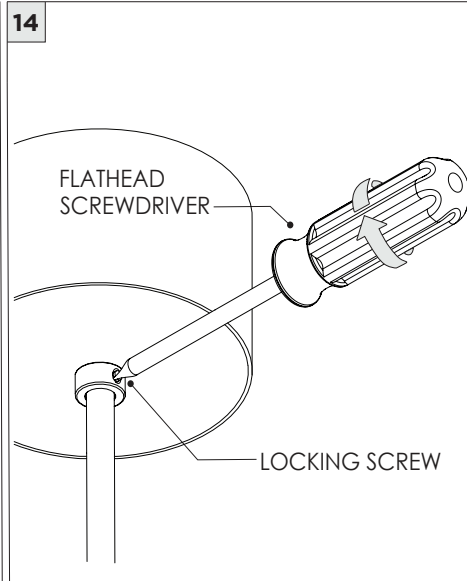
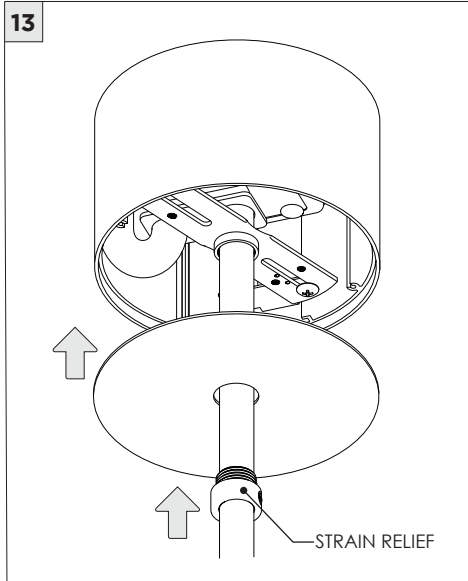
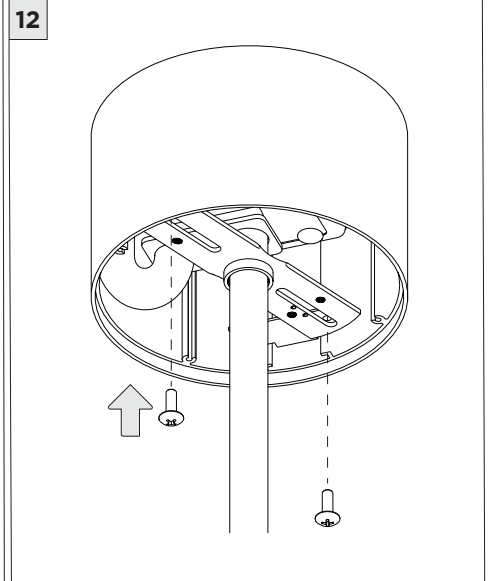
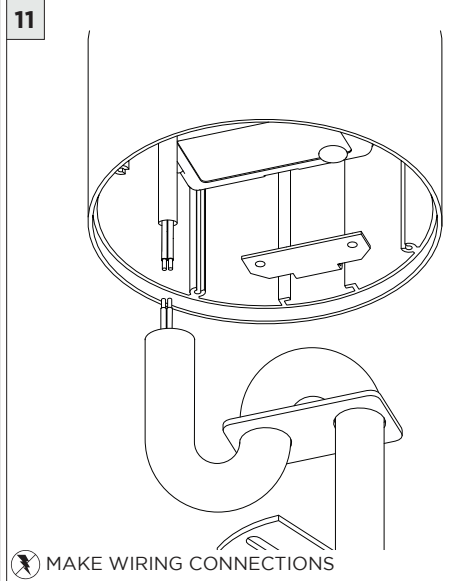
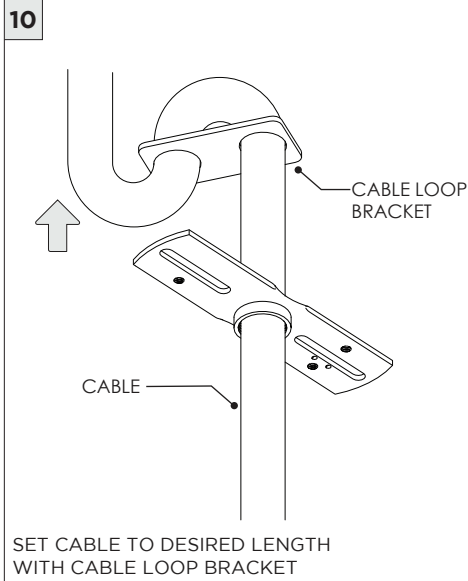


8



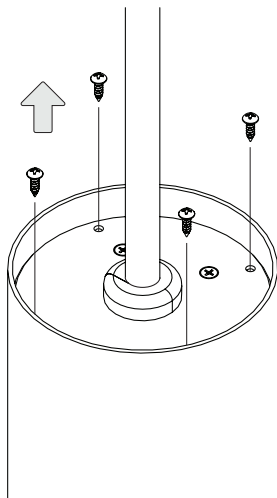
9



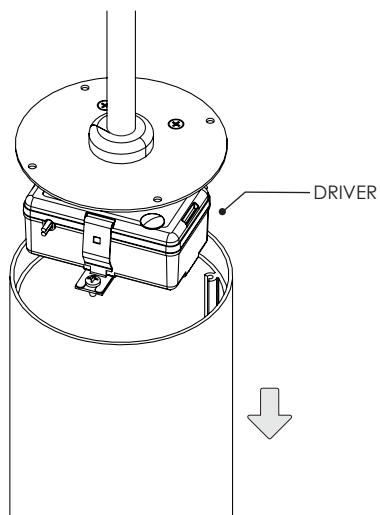


DRIVER SERVICING

1A

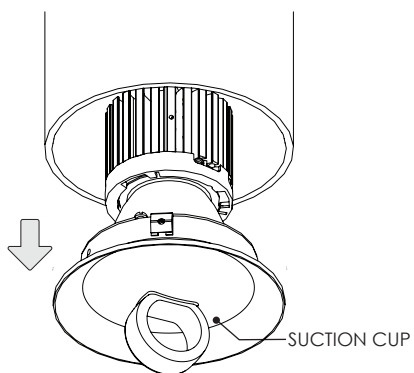


2



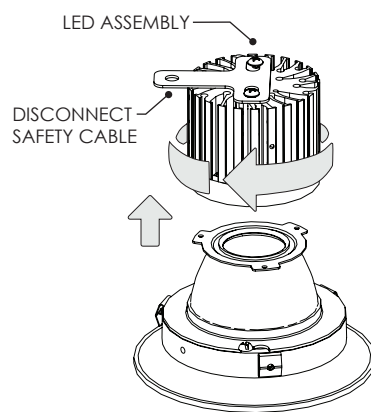
LED SERVICING

1



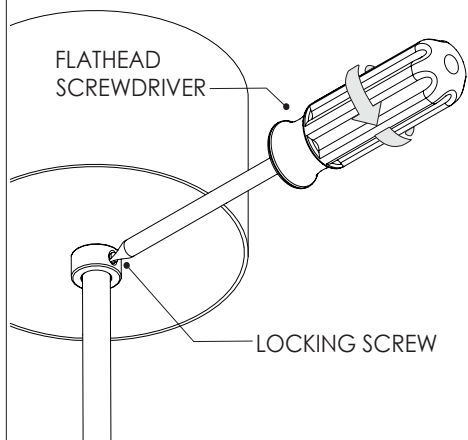
DISCONNECT LED WIRES AND REMOVE LED INSERT

2

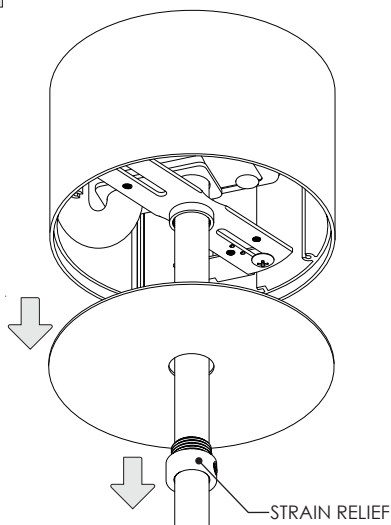


DRIVER SERVICING

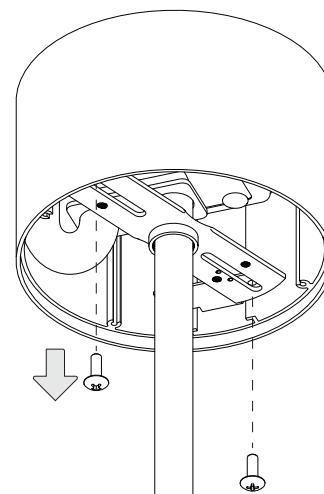
1



2



3



4

