

3G LIGHTING

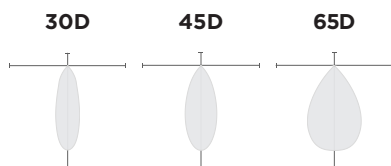
3G-SDL33SM3

3" MICRO MADISON CYLINDER
7" AND 11" HEIGHT

3" high performance, Micro Madison adjustable cylinder
Solid aluminum double gimbal with dual axis adjustability
Standard 95+ CRI LED system with performance up to 129 LPW
Delivered lumen range up to 1285m at 95+ CRI
1.2" Regressed LED source for enhanced glare control
Extruded aluminum construction with no visible hardware
Companion to 3G's Madison product family



OPTICS

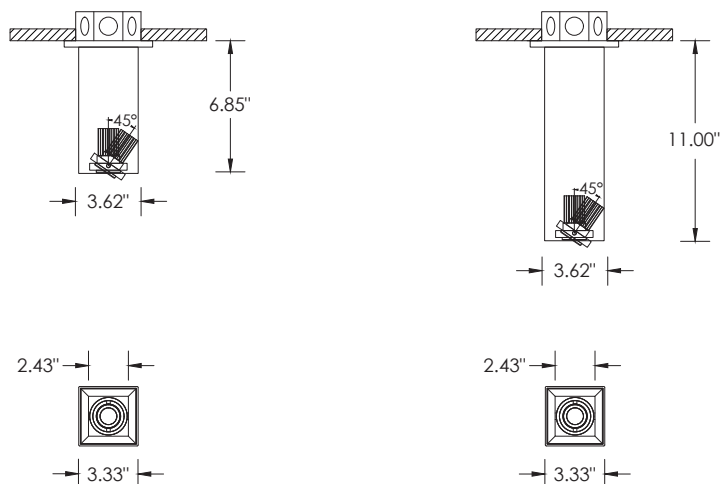


PERFORMANCE

LUMEN OUTPUT	DELIVERED LUMENS	SYSTEM WATTS	EFFICACY (LPW)
700	700	5.9	120
1000	1000	8.4	119
1200	1200	10.4	116

BASED ON 95+ CRI, 3500K, 45D OPTIC
Lumen output and actual wattage may vary +/- 5%

DIMENSIONS



PROJECT:		TYPE:	
CATALOG#:		DATE:	QTY:

CAT. NO	FIXTURE HEIGHT	LUMEN OUTPUT	CRI	COLOR TEMP	BEAM ANGLE
3G-SDL33SM3	7H - 7" HEIGHT * 11H - 11" HEIGHT	07 - 700 LUMENS 10 - 1000 LUMENS 12 - 1200 LUMENS	H95 - 95+ CRI	27K - 2700K 30K - 3000K 35K - 3500K 40K - 4000K	30D - 30° 45D - 45° 65D - 65°
	*7H not available with 700lm	All lumen outputs are delivered lumens at 95+ CRI			

VOLTAGE	DRIVER	HOUSING & INSERT FINISH	GIMBAL FINISH
UNV - 120/277V 120 - 120V	DIM - 0-10V (100-1%) LE - PHASE DIM * (TRIAC/ELV, 100-1%)	WH - WHITE BK - BLACK SV - SILVER CSF - CUSTOM-3G	NG - NATURAL ALUMINUM BG - BLACK WG - WHITE
	*Phase dimming available in 120V only		

OPTIONS
SF - SOFTENING LENS * HXB - BLACK HEXCELL LOUVER *
*Maximum 1 optical accessory

PERFORMANCE

LUMEN OUTPUT	DELIVERED LUMENS	SYSTEM WATTS	EFFICACY (LPW)
700	700	5.9	120
1000	1000	8.4	119
1200	1200	10.4	116

BASED ON 95+ CRI, 3500K, 45D OPTIC
Lumen output and actual wattage may vary +/- 5%

MULTIPLIERS

BEAM ANGLE	
30D	1.01
45D	1.00
65D	1.05

COLOR TEMP	
2700K	0.98
3000K	1.00
3500K	1.00
4000K	1.02

HOUSING

Extruded aluminum housing with powder coated finish
Twist and lock construction with no visible hardware

BEVELED INSERT

Machined aluminum beveled insert
Solid aluminum double gimbal with dual axis adjustability (45°x45°)

OPTICS

Proprietary anodized, aluminum reflectors
Beam angle available in 30°, 45° and 65°
Reflectors are field replaceable

LED SYSTEM

Standard 95+ CRI
Color consistency <2 SDCM
Available in 27K, 30K, 35K, and 40K
L90 > 50,000 hours

ELECTRICAL

Standard 0-10V, constant current drivers
100-1% dimming range and >0.9 power factor
120V Forward Phase/Reverse Phase driver option (100-1%)
Integral drivers are easily accessible through luminaire aperture

MOUNTING

All hardware included for mounting to 4" octagonal junction box
Conduit feed cut-out canopy option designed to mount to 4" octagonal junction box
Twist and lock mechanism

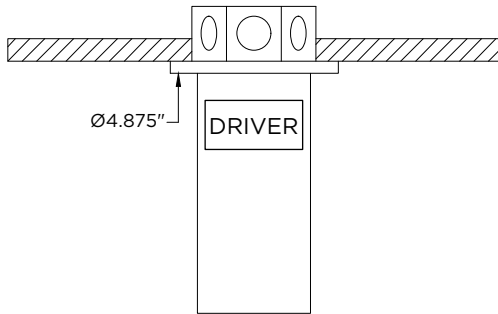
LISTING

ETL listed and conforms to UL1598 standard
Certified to CSA22.2 NO.250.0.
Rated for dry or damp locations

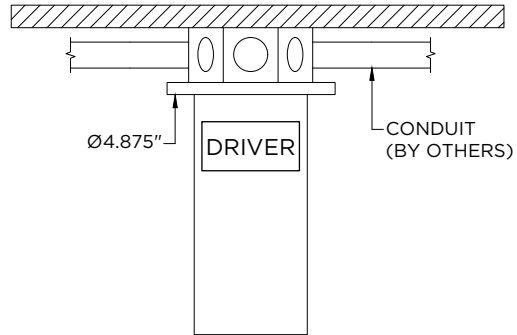
WARRANTY

5 year limited warranty
LED system rated for operation in ambient environments up to 25°C

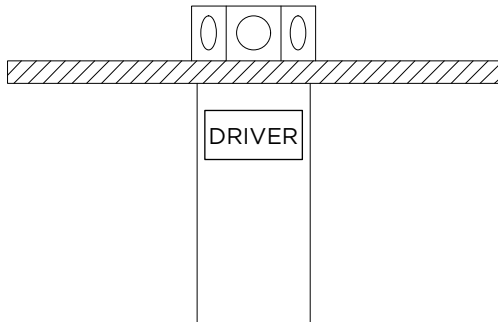
STANDARD CANOPY
RECESSED J-BOX (BY OTHERS)



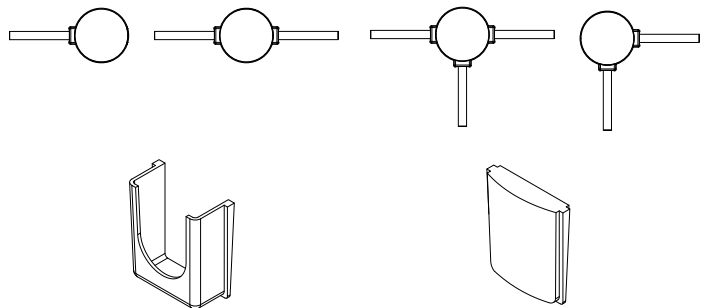
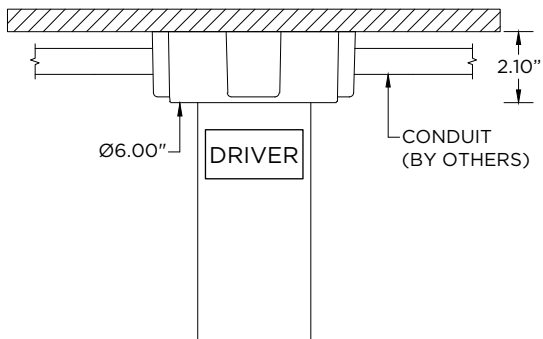
STANDARD CANOPY
SURFACE J-BOX (BY OTHERS)



FXC - SEAMLESS CANOPY
RECESSED J-BOX (BY OTHERS)



CF - CONDUIT FEED CANOPY
SURFACE MOUNT J-BOX (BY OTHERS)



CONDUIT COVER
3 PROVIDED WITH EACH
CONDUIT FEED CANOPY

BLANK
2 PROVIDED WITH EACH
CONDUIT FEED CANOPY