

# 3G LIGHTING

## 3G-PDZ33R

3" ZOIE CYLINDER  
7" AND 11" HEIGHT

3" diameter high performance Zoie cylinder  
Companion to 3G-DZ33R Round Zoie Downlight  
Regressed LED source provides maximum visual comfort, UGR <10  
High gloss black or white louvers with proprietary optics and no glare  
Extruded aluminum housing with powder coated finish  
Lumen range up to 2000lm (80+ and 90+ CRI options)  
100-1% dimming range standard with integral driver options



<b>PROJECT:</b>		<b>TYPE:</b>	
<b>CATALOG#:</b>		<b>DATE:</b>	<b>QTY:</b>

CAT. NO	FIXTURE HEIGHT	LUMEN OUTPUT (DELIVERED LUMENS)	CRI	COLOR TEMP
<b>3G-PDZ33R</b>	<b>7H</b> - 7" HEIGHT * <b>11H</b> - 11" HEIGHT	<b>10</b> - 1000 LUMENS <b>15</b> - 1500 LUMENS <b>17</b> - 1750 LUMENS <b>20</b> - 2000 LUMENS	<b>S80</b> - 80+ CRI <b>H90</b> - 90+ CRI	<b>27K</b> - 2700K <sup>1</sup> <b>30K</b> - 3000K <b>35K</b> - 3500K <b>40K</b> - 4000K <sup>1</sup>
	<small>*7H up to 1750lm (80+CRI) *7H up to 1500lm (90+CRI)</small>	<small>Lumen outputs are delivered lumens based on 80+ CRI, 3000K source. See performance chart for all options</small>		

BEAM ANGLE	VOLTAGE	DRIVER	HOUSING FINISH	LOUVER FINISH
<b>20D</b> - 20° <b>40D</b> - 40° <b>60D</b> - 60°	<b>UNV</b> - 120/277V <b>120</b> - 120V <b>347</b> - 347V <sup>2</sup>	<b>DIM</b> - 0-10V (100-1%) <b>LE</b> - PHASE DIM (TRIAC/ELV, 100-1%) <sup>3</sup> <b>D01</b> - 0-10V (100-0.1%) <b>DALI</b> - DALI (100-1%) <sup>4</sup> <b>DHL2</b> - LUTRON HI-LUME (1% ECOSYSTEM) <b>DMX</b> - DMX (100-0%) <sup>*</sup>	<b>WH</b> - WHITE <b>BK</b> - BLACK <b>SV</b> - SILVER <b>CSF</b> - CUSTOM-3G	<b>BLV</b> - BLACK <b>WLV</b> - WHITE
		<small>*DMX driver only available with rigid stem suspension</small>		

CANOPY TYPE	CANOPY FINISH	SUSPENSION TYPE	SUSPENSION LENGTH
<b>CN</b> - CANOPY (STANDARD) <b>CF</b> - CONDUIT FEED CANOPY	<b>WCF</b> - WHITE (STANDARD) <b>BCF</b> - BLACK <b>SCF</b> - SILVER <b>CSCF</b> - CUSTOM-3G	<b>WC</b> - WHITE CABLE <b>BC</b> - BLACK CABLE <b>RSW</b> - WHITE RIGID STEM <b>RSB</b> - BLACK RIGID STEM <b>RSS</b> - SILVER RIGID STEM <b>CSRS</b> - CUSTOM-3G	<b>C60</b> - 60" CABLE <b>C120</b> - 120" CABLE <b>S48</b> - 48" STEM <b>S96</b> - 96" STEM
			<small>All suspension options are field cuttable</small>

OPTIONS
<b>EMR</b> - EMERGENCY BATTERY <sup>5</sup> (REMOTE)

- <sup>1</sup> 2700K only available in 90CRI and 4000K only available in 80CRI  
<sup>2</sup> 347 available in "DIM" 0-10V only (100-1%). Not available with 7" height  
<sup>3</sup> Phase dimming options available in 120V only  
<sup>4</sup> DALI-2 (Type 6) provided as standard  
<sup>5</sup> Emergency battery installed remotely by others. Not accessible through the inside of the fixture

## PERFORMANCE

LUMEN OUTPUT	DELIVERED LUMENS	SYSTEM WATTS	EFFICACY (LPW)
1000	1000	8.4	122.4
1500	1500	13.2	117.4
1750	1750	15.4	116.8
2000	2000	18.4	111.7

BASED ON 80+ CRI, 3000K WITH 20D OPTIC  
Lumen output and actual wattage may vary +/- 5%

## MULTIPLIERS

COLOR TEMP	80+ CRI
2700K	N/A
3000K	1.00
3500K	0.97
4000K	1.16

COLOR TEMP	90+ CRI
2700K	0.77
3000K	0.86
3500K	0.86
4000K	N/A

BEAM ANGLE	
20D	1.00
40D	0.97
60D	0.94

## HOUSING

Extruded aluminum housing with powder coated finish

## OPTICS

3" aperture with regressed LED source for maximum visual comfort  
High gloss black or white louvers with proprietary optics and no glare  
Polycarbonate multi-faceted reflectors  
Available in 20°, 40° and 60°  
UGR <10

## ELECTRICAL

Standard 0-10V, constant current drivers with 100-1% dimming range and >0.9 power factor  
Standard 120/277V universal voltage with several driver options  
All drivers are integral and easily accessible within luminaire

## LED SYSTEM

Osram LED source  
Color consistency <2 SDCM  
80+ and 90+ CRI  
Available in 27K, 30K, 35K, and 40K  
L90 >60,000 hours

## MOUNTING

1/2" diameter rigid stem option with sloped ceiling adapter (field cuttable)  
Standard, 18-gauge, 5 conductor single circuit braided power feed (black and white finish)  
All hardware included for mounting to 4" octagonal junction box  
Canopy provided in white finish as standard  
Conduit feed cut-out canopy option designed to mount to 4" octagonal junction box

## EMERGENCY

Remote emergency battery installed by others (not accessible through fixture aperture)  
7W output for 90 minutes (+/- 700lm at 80+ CRI)  
CA Title 24 Certified  
Maximum remote mounting distance: 50ft (12AWG) or 25ft (14AWG)  
Caution: Emergency Battery utilizes more than one power source and servicing should be performed by qualified personnel

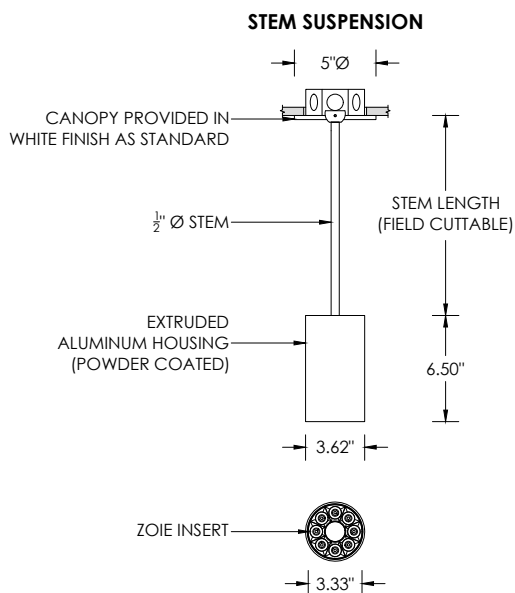
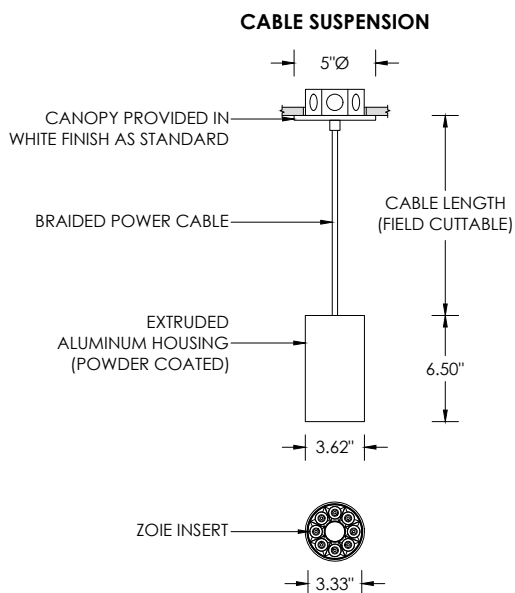
## LISTING

ETL listed and conforms to UL1598 standard  
Certified to CSA22.2 NO.250.0.  
Rated for indoor locations

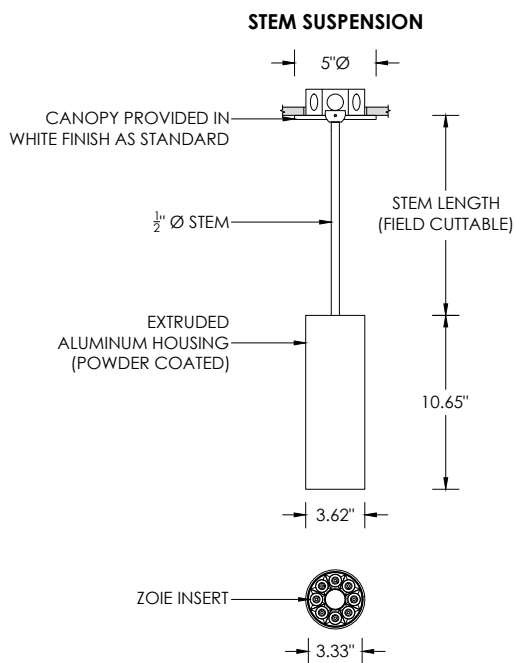
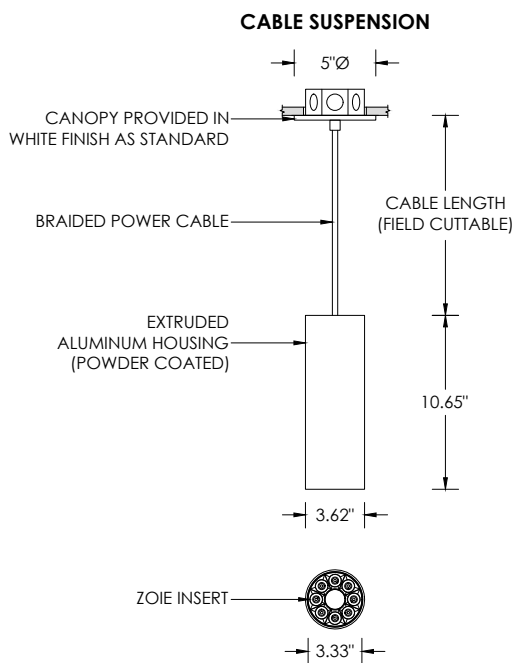
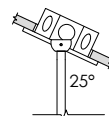
## WARRANTY

5 year limited warranty  
LED system rated for operation in ambient environments up to 25°C

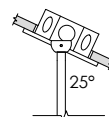
**RECESSED 4" OCTAGONAL JUNCTION BOX BY OTHERS**  
STANDARD CANOPY MOUNT



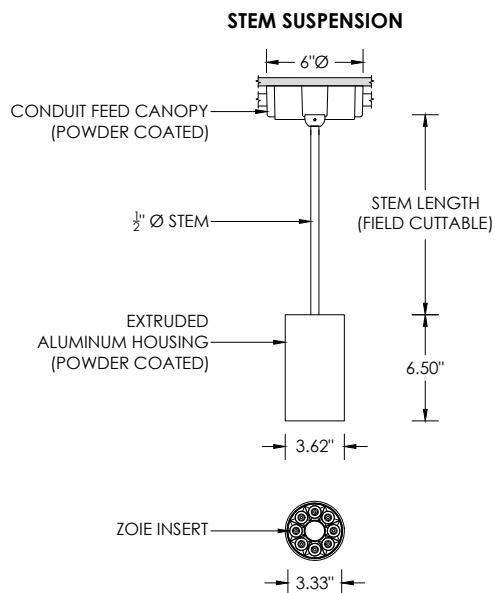
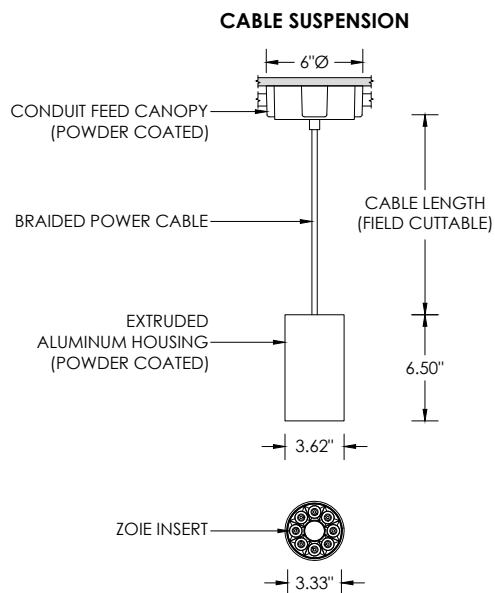
**SUITABLE FOR SLOPED CEILING**



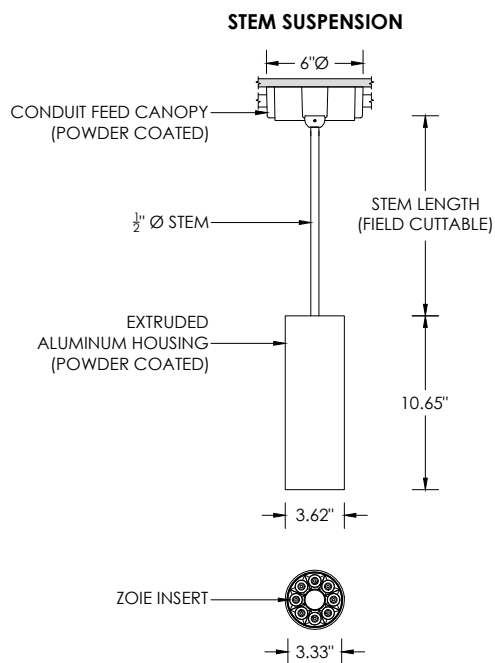
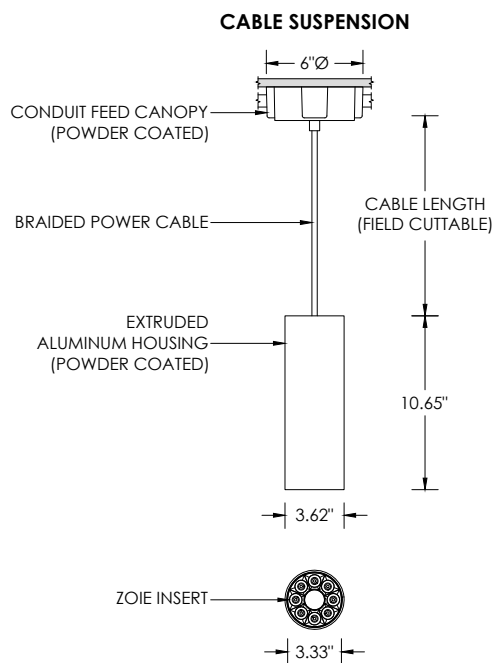
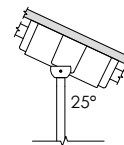
**SUITABLE FOR SLOPED CEILING**



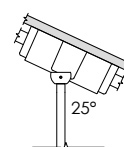
**SURFACE 4" OCTAGONAL X 1.5" DEEP JUNCTION BOX BY OTHERS**  
CONDUIT FEED CANOPY MOUNT (CFX OPTION)



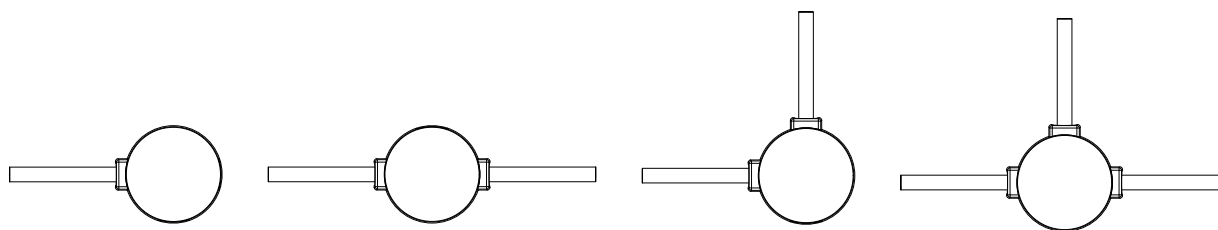
**SUITABLE FOR SLOPED CEILING**



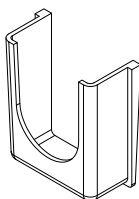
**SUITABLE FOR SLOPED CEILING**



**CONDUIT FEED CANOPY MOUNTING OPTIONS**



CONDUIT COVER  
3 PROVIDED WITH EACH  
CONDUIT FEED CANOPY



BLANK  
2 PROVIDED WITH EACH  
CONDUIT FEED CANOPY

