

# 3G LIGHTING

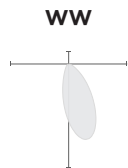
## 3G-SDL45RWW

4" WALL WASH CYLINDER  
7" AND 11" HEIGHT

4" diameter, wall wash cylinder with upgraded performance  
Standard 95+ CRI LED system with performance up to 75 LPW  
Delivered lumen range up to 1530lm at 95+ CRI  
Regressed LED source with enhanced glare control  
Proprietary wall wash optic and lens  
Extruded aluminum construction with no visible hardware  
Companion to 3G's DL45R series downlight family



### OPTICS

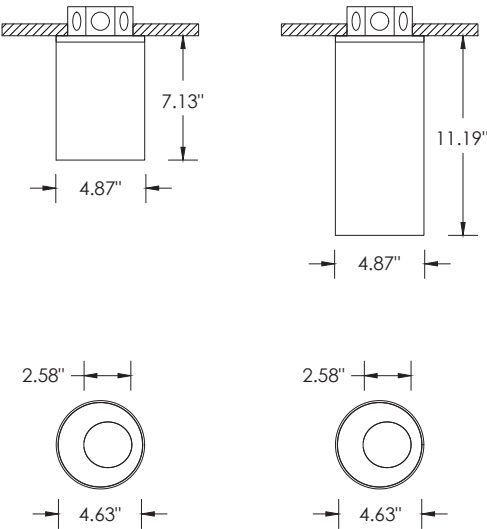


### PERFORMANCE

LUMEN OUTPUT	DELIVERED LUMENS	SYSTEM WATTS	EFFICACY (LPW)
1000	1000	13.6	74
1250	1250	17.0	74
1500	1500	21.2	71

BASED ON 95+ CRI, 3500K, WITH WALL WASH OPTIC  
Lumen output and actual wattage may vary +/- 5%

### DIMENSIONS





## 3G-SDL45RWW

## 4" WALL WASH CYLINDER - 7" AND 11" HEIGHT

## ORDERING INFORMATION

PROJECT:		TYPE:			
CATALOG#:		DATE:		QTY:	

CAT. NO	FIXTURE HEIGHT	LUMEN OUTPUT	CRI	COLOR TEMP	BEAM ANGLE
3G-SDL45RWW	7H - 7" HEIGHT * 11H - 11" HEIGHT  *7H available up to 1250lm *7H not available with DMX or DHL2	10 - 1000 LUMENS 12 - 1250 LUMENS 15 - 1500 LUMENS  All lumen outputs are <b>delivered lumens</b> at 95+ CRI	H95 - 95+ CRI	27K - 2700K 30K - 3000K 35K - 3500K 40K - 4000K	WW- WALL WASH

VOLTAGE	DRIVER	HOUSING FINISH	INSERT FINISH
<b>UNV</b> - 120/277V <b>120</b> - 120V <b>347</b> - 347V <sup>1</sup>	<b>DIM</b> - 0-10V (100-1%) <b>LE</b> - PHASE DIM <sup>2</sup> (TRIAC/ELV, 100-1%) <b>D01</b> - 0-10V (100-0.1%) <b>DALI</b> - DALI (100-1%) <sup>3</sup> <b>DHL2</b> - LUTRON HI-LUME LDE (100-1%) <b>DMX</b> - DMX (100-0%)	<b>WH</b> - WHITE <b>BK</b> - BLACK <b>SV</b> - SILVER <b>CSF</b> - CUSTOM-3G	<b>WI</b> - WHITE <b>BI</b> - BLACK <b>SI</b> - SILVER <b>CI</b> - CUSTOM-3G

## OPTIONS

**CF - CONDUIT FEED CANOPY**

All canopy options provided in same finish as housing

**1** 347 available in "DIM" 0-10V only (100-1%). Not available with 7H model

**2** Phase dimming options available in 120V only

**3** DALI-2 (Type 6) provided as standard

## PERFORMANCE

LUMEN OUTPUT	DELIVERED LUMENS	SYSTEM WATTS	EFFICACY (LPW)
1000	1000	13.6	74
1250	1250	17.0	74
1500	1500	21.2	71

BASED ON 95+ CRI, 3500K, WITH WALL WASH OPTIC  
Lumen output and actual wattage may vary +/- 5%

## MULTIPLIERS

COLOR TEMP	
2700K	0.98
3000K	1.00
3500K	1.00
4000K	1.02

## HOUSING

Extruded aluminum housing with powder coated finish  
Twist and lock construction with no visible hardware

## BEVELED INSERT

Cast aluminum beveled insert with matte powder coated finish  
4" aperture with regressed LED source for enhanced glare control

## OPTICS

Proprietary wall wash optic  
Asymmetrical lens provides uniformity and smooth illumination across and down the wall  
Regressed LED source with enhanced glare control

## ELECTRICAL

Standard 0-10V, constant current drivers  
100-1% dimming range and >0.9 power factor  
Standard 120/277V universal voltage with several driver options  
120V Forward Phase/Reverse Phase driver option (100-1%)  
Integral drivers are easily accessible through luminaire aperture

## LED SYSTEM

Standard 95+ CRI  
Color consistency <2 SDCM  
Available in 27K, 30K, 35K, and 40K  
L90 > 50,000 hours

## MOUNTING

All hardware included for mounting to 4" octagonal junction box  
Canopy provided in white finish as standard  
Conduit feed cut-out canopy option designed to mount to 4" octagonal junction box  
Twist and lock mechanism with no visible hardware

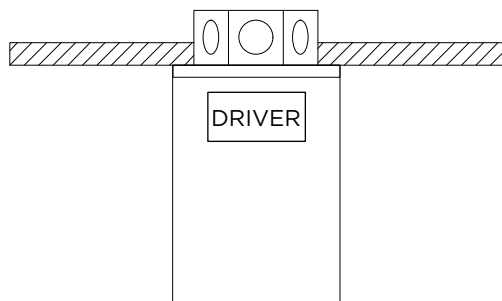
## LISTING

ETL listed and conforms to UL1598 standard  
Certified to CSA22.2 NO.250.0.  
Rated for dry or damp locations

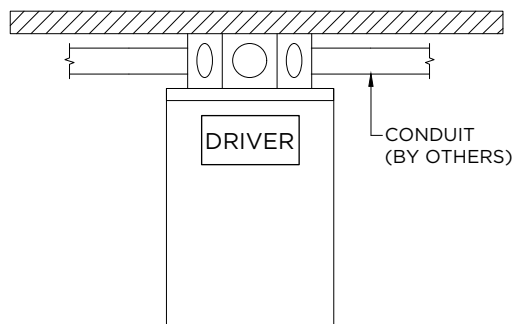
## WARRANTY

5 year limited warranty  
LED system rated for operation in ambient environments up to 25°C

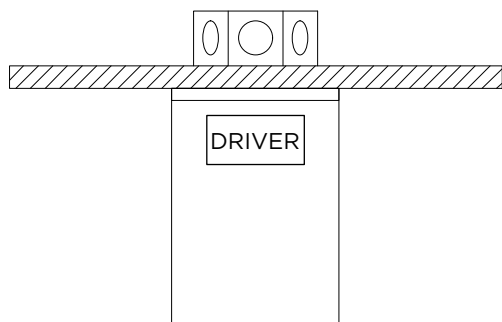
**STANDARD CANOPY**  
RECESSED J-BOX (BY OTHERS)



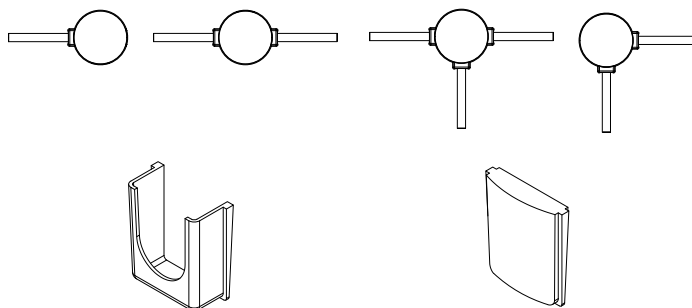
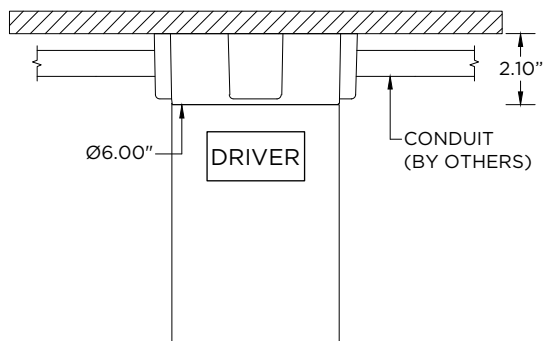
**STANDARD CANOPY**  
SURFACE J-BOX (BY OTHERS)



**FXC - SEAMLESS CANOPY**  
RECESSED J-BOX (BY OTHERS)



**CF - CONDUIT FEED CANOPY**  
SURFACE MOUNT J-BOX (BY OTHERS)



CONDUIT COVER  
3 PROVIDED WITH EACH  
CONDUIT FEED CANOPY

BLANK  
2 PROVIDED WITH EACH  
CONDUIT FEED CANOPY