

# 3G LIGHTING

## 3G-PDZ33RA

3" ADJUSTABLE ZOIE CYLINDER  
3", 7" AND 11" HEIGHT

3" diameter, adjustable Zoie cylinder with 0-90° tilt and 360° rotation  
Companion to 3G-DZ33R Round Zoie Downlight  
Regressed LED source provides maximum visual comfort, UGR <10  
High gloss black or white louvers with proprietary optics and no glare  
Extruded aluminum housing with powder coated finish  
Twist and lock construction and no visible hardware  
Lumen range up to 2000lm (80+ and 90+ CRI options)  
100-1% dimming range standard with integral driver options



<b>PROJECT:</b>		<b>TYPE:</b>	
<b>CATALOG#:</b>		<b>DATE:</b>	<b>QTY:</b>

CAT. NO	FIXTURE HEIGHT	LUMEN OUTPUT (DELIVERED LUMENS)	CRI	COLOR TEMP
3G-PDZ33RA	3H - 3" HEIGHT *	10 - 1000 LUMENS	S80 - 80+ CRI	27K - 2700K <sup>1</sup>
	7H - 7" HEIGHT *	15 - 1500 LUMENS	H90 - 90+ CRI	30K - 3000K
	11H - 11" HEIGHT	17 - 1750 LUMENS		35K - 3500K
		20 - 2000 LUMENS		40K - 4000K <sup>1</sup>
<small>*3H &amp; 7H up to 1750lm (80+CRI) *3H &amp; 7H up to 1500lm (90+CRI)</small>		<small>Lumen outputs are delivered lumens based on 80+ CRI, 3000K source. See performance chart for all options</small>		

BEAM ANGLE	VOLTAGE	DRIVER	HOUSING FINISH	LOUVER FINISH
20D - 20°	UNV - 120/277V	DIM - 0-10V (100-1%)	WH - WHITE	BLV - BLACK
40D - 40°	120 - 120V	LE - PHASE DIM (TRIAC/ELV, 100-1%) <sup>3</sup>	BK - BLACK	WLV - WHITE
60D - 60°	347 - 347V <sup>2</sup>	D01 - 0-10V (100-0.1%)	SV - SILVER	
		DALI - DALI (100-1%) <sup>4</sup>	CSF - CUSTOM-3G	
		DHL2 - LUTRON HI-LUME (1% ECOSYSTEM)		
		DMX - DMX (100-0%) <sup>*</sup>		
		<small>*DMX driver only available with rigid stem suspension</small>		

CANOPY TYPE	CANOPY FINISH	SUSPENSION TYPE	SUSPENSION LENGTH
CN - CANOPY (STANDARD)	WCF - WHITE (STANDARD)	RSW - WHITE RIGID STEM	S48 - 48" STEM
CF - CONDUIT FEED CANOPY	BCF - BLACK	RSB - BLACK RIGID STEM	S96 - 96" STEM
	SCF - SILVER	RSS - SILVER RIGID STEM	
	CSCF - CUSTOM-3G	CSRS - CUSTOM-3G	
			<small>All suspension options are field cuttable</small>

OPTIONS
EMR - EMERGENCY BATTERY <sup>5</sup> (REMOTE)

<sup>1</sup> 2700K only available in 90CRI and 4000K only available in 80CRI  
<sup>2</sup> 347 available in "DIM" 0-10V only (100-1%). Not available with 7" height  
<sup>3</sup> Phase dimming options available in 120V only  
<sup>4</sup> DALI-2 (Type 6) provided as standard  
<sup>5</sup> Emergency battery installed remotely by others. Not accessible through the inside of the fixture

## PERFORMANCE

LUMEN OUTPUT	DELIVERED LUMENS	SYSTEM WATTS	EFFICACY (LPW)
1000	1000	8.4	122.4
1500	1500	13.2	117.4
1750	1750	15.4	116.8
2000	2000	18.4	111.7

BASED ON 80+ CRI, 3000K WITH 20D OPTIC  
Lumen output and actual wattage may vary +/- 5%

## MULTIPLIERS

COLOR TEMP	80+ CRI
2700K	N/A
3000K	1.00
3500K	0.97
4000K	1.16

COLOR TEMP	90+ CRI
2700K	0.77
3000K	0.86
3500K	0.86
4000K	N/A

BEAM ANGLE	
20D	1.00
40D	0.97
60D	0.94

## HOUSING

Extruded aluminum housing with powder coated finish  
Twist and lock construction with no visible hardware  
Adjustable housing with 0-90° tilt and 360° rotation features  
proprietary swivel mechanism

## OPTICS

3" aperture with regressed LED source for maximum visual comfort  
High gloss black or white louvers with proprietary optics and no glare  
Polycarbonate multi-faceted reflectors  
Available in 20°, 40° and 60°  
UGR <10

## ELECTRICAL

Standard 0-10V, constant current drivers with 100-1% dimming  
range and >0.9 power factor  
Standard 120/277V universal voltage with several driver options  
All drivers are integral and easily accessible within luminaire

## LED SYSTEM

Osram LED source  
Color consistency <2 SDCM  
80+ and 90+ CRI  
Available in 27K, 30K, 35K, and 40K  
L90 >60,000 hours

## MOUNTING

1/2" diameter rigid stem option with sloped ceiling adapter  
(field cuttable)  
All hardware included for mounting to 4" octagonal junction box  
Conduit feed cut-out canopy option designed to mount to 4"  
octagonal junction box  
Twist and lock mechanism

## EMERGENCY

Remote emergency battery installed by others (not accessible  
through fixture aperture)  
7W output for 90 minutes (+/- 700lm at 80+ CRI)  
CA Title 24 Certified  
Maximum remote mounting distance: 50ft (12AWG) or 25ft (14AWG)  
Caution: Emergency Battery utilizes more than one power source  
and servicing should be performed by qualified personnel

## LISTING

ETL listed and conforms to UL1598 standard  
Certified to CSA22.2 NO.250.0.  
Rated for indoor locations

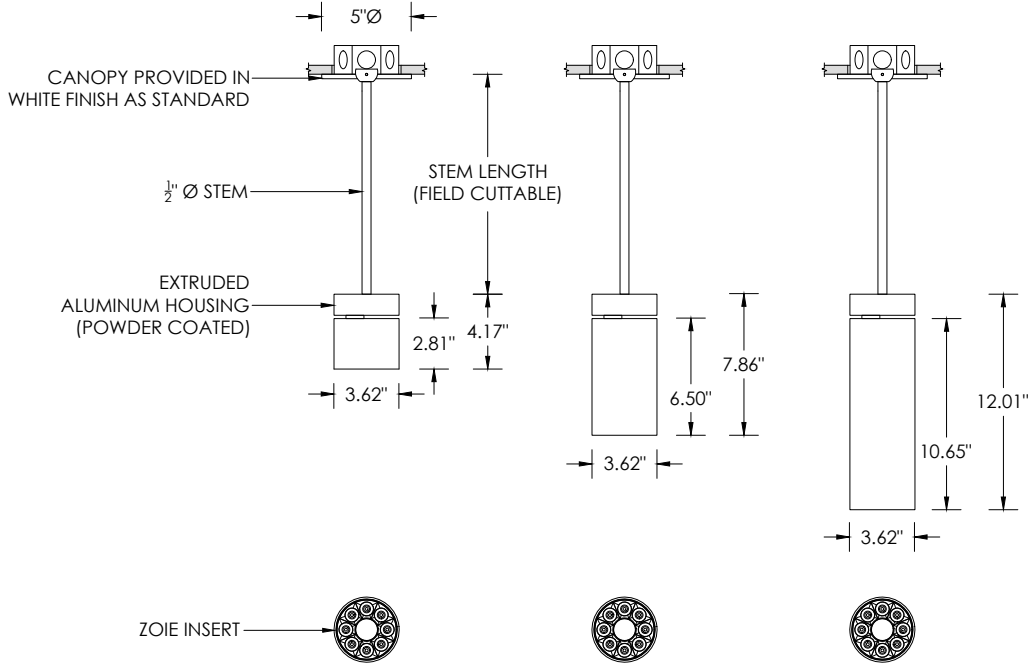
## WARRANTY

5 year limited warranty  
LED system rated for operation in ambient environments up to 25°C

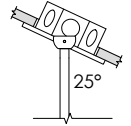
**RECESSED 4" OCTAGONAL JUNCTION BOX BY OTHERS**  
STANDARD CANOPY MOUNT

DRIVER SUPPLIED WITH REMOTE  
ENCLOSURE FOR 3H (3" MODEL ONLY)

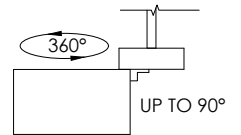
**STEM SUSPENSION**



**SUITABLE FOR SLOPED CEILING**

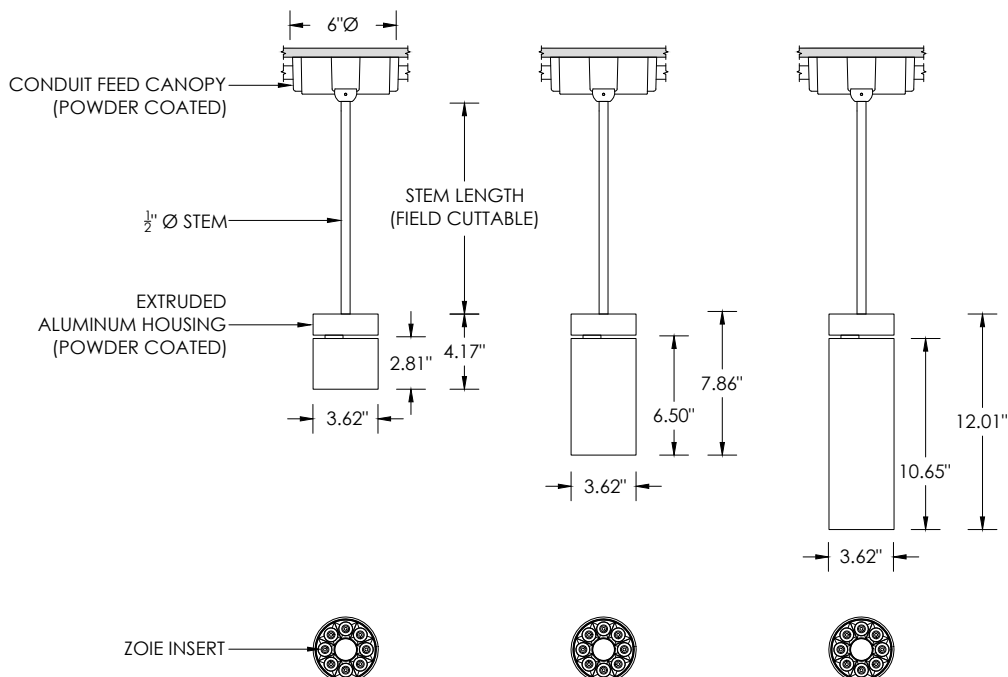


**ADJUSTABILITY**

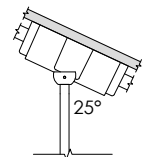


**SURFACE 4" OCTAGONAL X 1.5" DEEP JUNCTION BOX BY OTHERS**  
CONDUIT FEED CANOPY MOUNT (CFX OPTION)

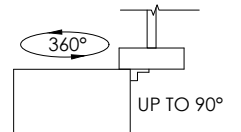
**STEM SUSPENSION**



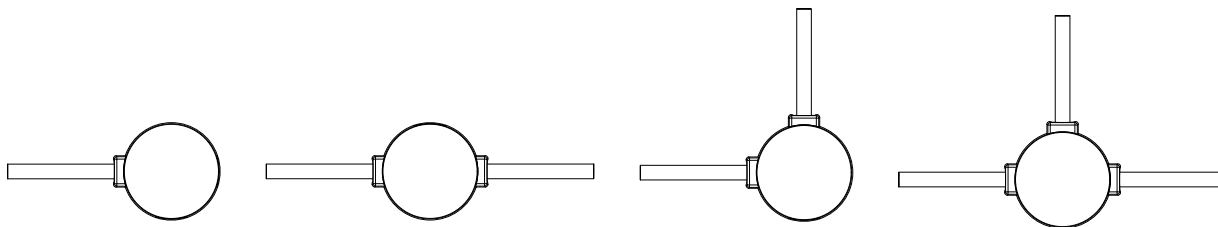
**SUITABLE FOR SLOPED CEILING**



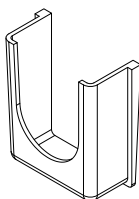
**ADJUSTABILITY**



**CONDUIT FEED CANOPY MOUNTING OPTIONS**



CONDUIT COVER  
3 PROVIDED WITH EACH  
CONDUIT FEED CANOPY



BLANK  
2 PROVIDED WITH EACH  
CONDUIT FEED CANOPY

