

3G LIGHTING

3G-PDZ45RA

4" ADJUSTABLE ZOIE CYLINDER
3" AND 7" HEIGHT

4" diameter adjustable Zoie cylinder with 0-90° tilt and 360° rotation
Companion to 3G-DZ45R Round Zoie Downlight
Regressed LED source provides maximum visual comfort, UGR <10
High gloss black or white louvers with proprietary optics and no glare
Extruded aluminum housing with powder coated finish
Twist and lock construction and no visible hardware
Lumen range from 1000lm to 3000lm (80+ and 90+ CRI options)
100-1% dimming range standard with integral driver options



PROJECT:		TYPE:	
CATALOG#:		DATE:	QTY:

CAT. NO	FIXTURE HEIGHT	LUMEN OUTPUT (DELIVERED LUMENS)	CRI	COLOR TEMP
3G-PDZ45RA	3H - 3" HEIGHT 7H - 7" HEIGHT <small>*3H up to 2000lm (80+CRI) *3H up to 1500lm (90+CRI)</small>	10 - 1000 LUMENS 15 - 1500 LUMENS 20 - 2000 LUMENS 25 - 2500 LUMENS 30 - 3000 LUMENS ¹ <small>Lumen outputs are delivered lumens based on 80+ CRI, 3000K source. See performance chart for all options</small>	S80 - 80+ CRI H90 - 90+ CRI	27K - 2700K ² 30K - 3000K 35K - 3500K 40K - 4000K ²

BEAM ANGLE	VOLTAGE	DRIVER	HOUSING FINISH	LOUVER FINISH
20D - 20° 40D - 40° 60D - 60°	UNV - 120/277V 120 - 120V	DIM - 0-10V (100-1%) LE - PHASE DIM (TRIAC/ELV, 100-1%) ³	WH - WHITE BK - BLACK SV - SILVER CSF - CUSTOM-3G	BLV - BLACK WLV - WHITE

CANOPY TYPE	CANOPY FINISH	SUSPENSION TYPE	SUSPENSION LENGTH
CN - CANOPY (STANDARD) CF - CONDUIT FEED CANOPY	WCF - WHITE (STANDARD) BCF - BLACK SCF - SILVER CSCF - CUSTOM-3G	RSW - WHITE RIGID STEM RSB - BLACK RIGID STEM RSS - SILVER RIGID STEM CSRS - CUSTOM-3G	S48 - 48" STEM S96 - 96" STEM <small>All suspension options are field cuttable</small>

OPTIONS
EMR - EMERGENCY BATTERY ⁴ (REMOTE)

¹ 3000lm not available in 90CRI

² 2700K only available in 90CRI and 4000K only available in 80CRI

³ Phase dimming options available in 120V only

⁴ Emergency battery installed remotely by others. Not accessible through the inside of the fixture

PERFORMANCE

LUMEN OUTPUT	DELIVERED LUMENS	SYSTEM WATTS	EFFICACY (LPW)
1000	1000	8.0	124.7
1500	1500	12.8	116.9
2000	2000	17.1	116.7
2500	2500	22.3	112.2
3000	3000	29.0	103.4

BASED ON 80+ CRI, 3000K WITH 40D OPTIC
Lumen output and actual wattage may vary +/- 5%

MULTIPLIERS

COLOR TEMP	80+ CRI	COLOR TEMP	90+ CRI	BEAM ANGLE	
2700K	N/A	2700K	0.83	20D	0.98
3000K	1.00	3000K	0.83	40D	1.00
3500K	0.94	3500K	0.88	60D	1.02
4000K	1.11	4000K	N/A		

HOUSING

Extruded aluminum housing with powder coated finish
Twist and lock construction with no visible hardware
Adjustable housing with 0-90° tilt and 360° rotation features proprietary swivel mechanism

OPTICS

4" aperture with regressed LED source for maximum visual comfort
High gloss black or white louvers with proprietary optics and no glare
Polycarbonate multi-faceted reflectors
Available in 20°, 40° and 60°
UGR <10

MOUNTING

1/2" diameter rigid stem option with sloped ceiling adapter (field cuttable)
All hardware included for mounting to 4" octagonal junction box
Conduit feed cut-out canopy option designed to mount to 4" octagonal junction box
Twist and lock mechanism

WARRANTY

5 Year Warranty on LED and drivers
Manufacturer 1 Year Warranty for defects in material and workmanship under normal use
Ambient temperature at fixture should not exceed 25°C

LISTING

ETL listed and conforms to UL1598 standard. Certified to CSA22.2 No.250.0.
Rated for indoor locations

ELECTRICAL

Standard 0-10V, constant current drivers with 100-1% dimming range and >0.9 power factor
120V Forward Phase/Reverse Phase driver option with 100-1% dimming range
Standard 120/277V universal voltage with several driver options
All drivers are integral and easily accessible through luminaire aperture
Driver supplied for junction box installation for 3" model only
3" and 7" models include 0-10V drivers that operate only with dimmers that sink current (not designed for source current)
Compatible 0-10V dimmers for all 3" and 7" height models listed below:
Lutron NFTV, **Lutron** DVTV, **Lutron** DVSTV, **Lutron** VIVE RMJS-8TN, **Leviton** IP710-DLZ, **Philips** SR1200ZTUNV, **Cooper** SF10P

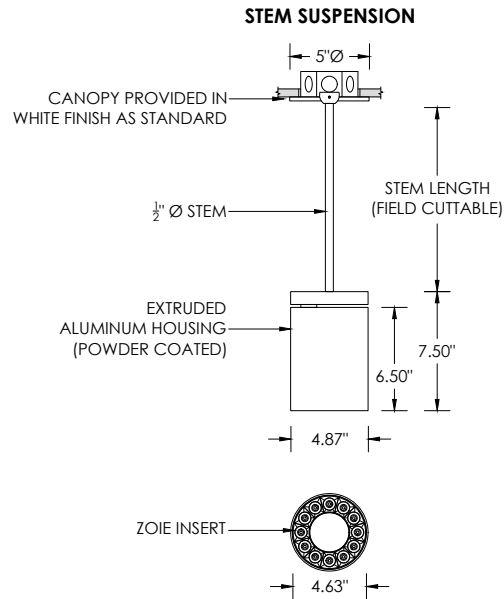
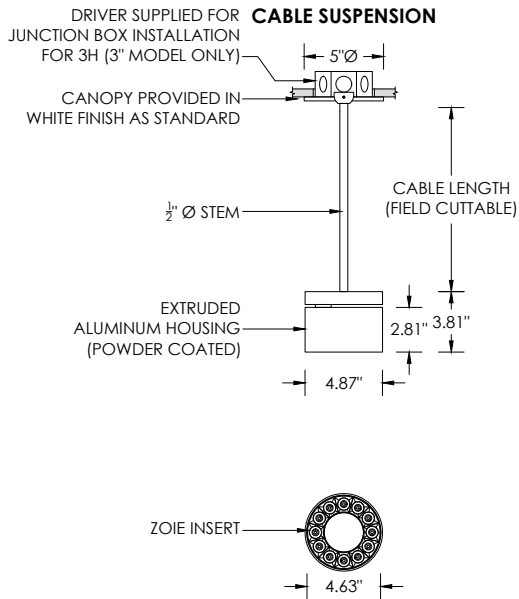
EMERGENCY

Remote emergency battery installed by others (not accessible through fixture aperture)
7W output for 90 minutes (+/- 700lm at 80+ CRI)
CA Title 24 Certified
Maximum remote mounting distance:
50ft (12AWG) or 25ft (14AWG) for fixtures operating at 3000lm or below
30ft (12AWG) or 20ft (14AWG) for fixtures operating above 3000lm
Caution: Emergency Battery utilizes more than one power source and servicing should be performed by qualified personnel

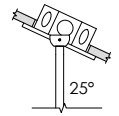
LED SYSTEM

Osram LED source
Color consistency <2 SDCM
80+ and 90+ CRI
27K, 30K, 35K, and 40K
L90 >60,000 hours
5 year warranty

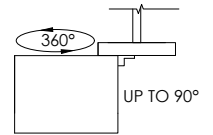
RECESSED 4" OCTAGONAL JUNCTION BOX BY OTHERS
STANDARD CANOPY MOUNT



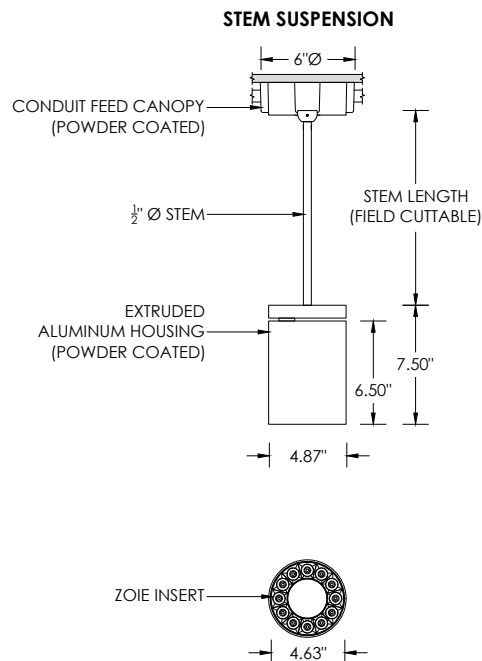
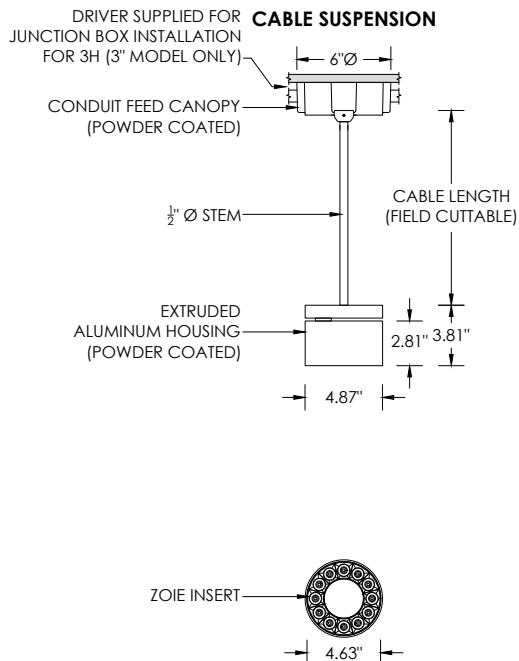
SUITABLE FOR SLOPED CEILING



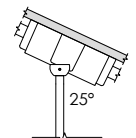
ADJUSTABILITY



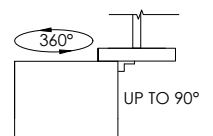
SURFACE 4" OCTAGONAL X 1.5" DEEP JUNCTION BOX BY OTHERS
CONDUIT FEED CANOPY MOUNT (CFX OPTION)



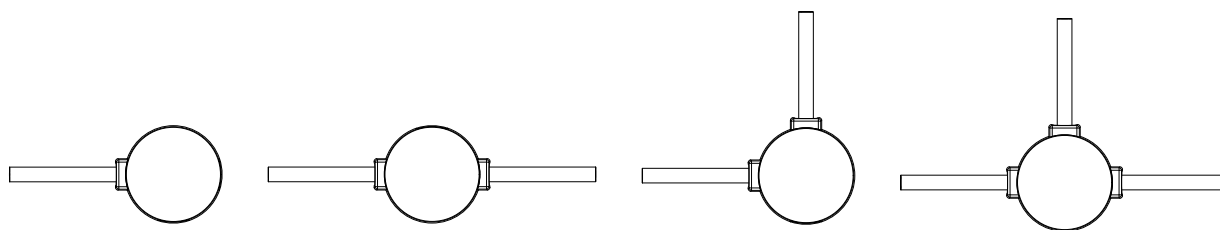
SUITABLE FOR SLOPED CEILING



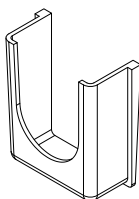
ADJUSTABILITY



CONDUIT FEED CANOPY MOUNTING OPTIONS



CONDUIT COVER
3 PROVIDED WITH EACH
CONDUIT FEED CANOPY



BLANK
2 PROVIDED WITH EACH
CONDUIT FEED CANOPY

