

3G LIGHTING

3G-PRA-Z45

ROUND ACOUSTIC PENDANT
ZOIE DOWNLIGHT



Acoustic body fabricated in 1/2" thick acoustic felt
Available in 24" and 36" with 20 color options
4" diameter trimless Zoie downlight integration
Delivered lumen range up to 3500lm (UGR <10)
Companion to 3G-DZ45 cylinder and downlight family
Optional felt dust cover provides added acoustic value

PROJECT:					TYPE:		
CATALOG#:					DATE:		QTY:

CAT. NO	FIXTURE SIZE	ACOUSTIC BODY	LOUVER FINISH	LUMEN OUTPUT	CRI
3G-PRA-Z45	24 - 24" 36 - 36"	BXX - (SEE PAGE 2 FOR ALL COLORS)	BLV - BLACK WLV - WHITE	10 - 1000 LUMENS 15 - 1500 LUMENS 20 - 2000 LUMENS 25 - 2500 LUMENS 30 - 3000 LUMENS 35 - 3500 LUMENS	S80 - 80+ CRI H90 - 90+ CRI

COLOR TEMP	BEAM ANGLE	VOLTAGE	DRIVER	CABLE LENGTH
27K - 2700K ¹ 30K - 3000K 35K - 3500K 40K - 4000K ¹	20D - 20° 40D - 40° 60D - 60°	UNV - 120/277V 120 - 120V 347 - 347V ²	DIM - 0-10V (100-1%) LE - PHASE DIM (TRIAC/ELV, 100-1%) ³ D01 - 0-10V (100-0.1%) ⁴ DALI - DALI (100-1%) ⁴ DHL2 - LUTRON HI-LUME (1% ECOSYSTEM) DMX - DMX (100-0%) ⁴	60" - 60" 120" - 120"

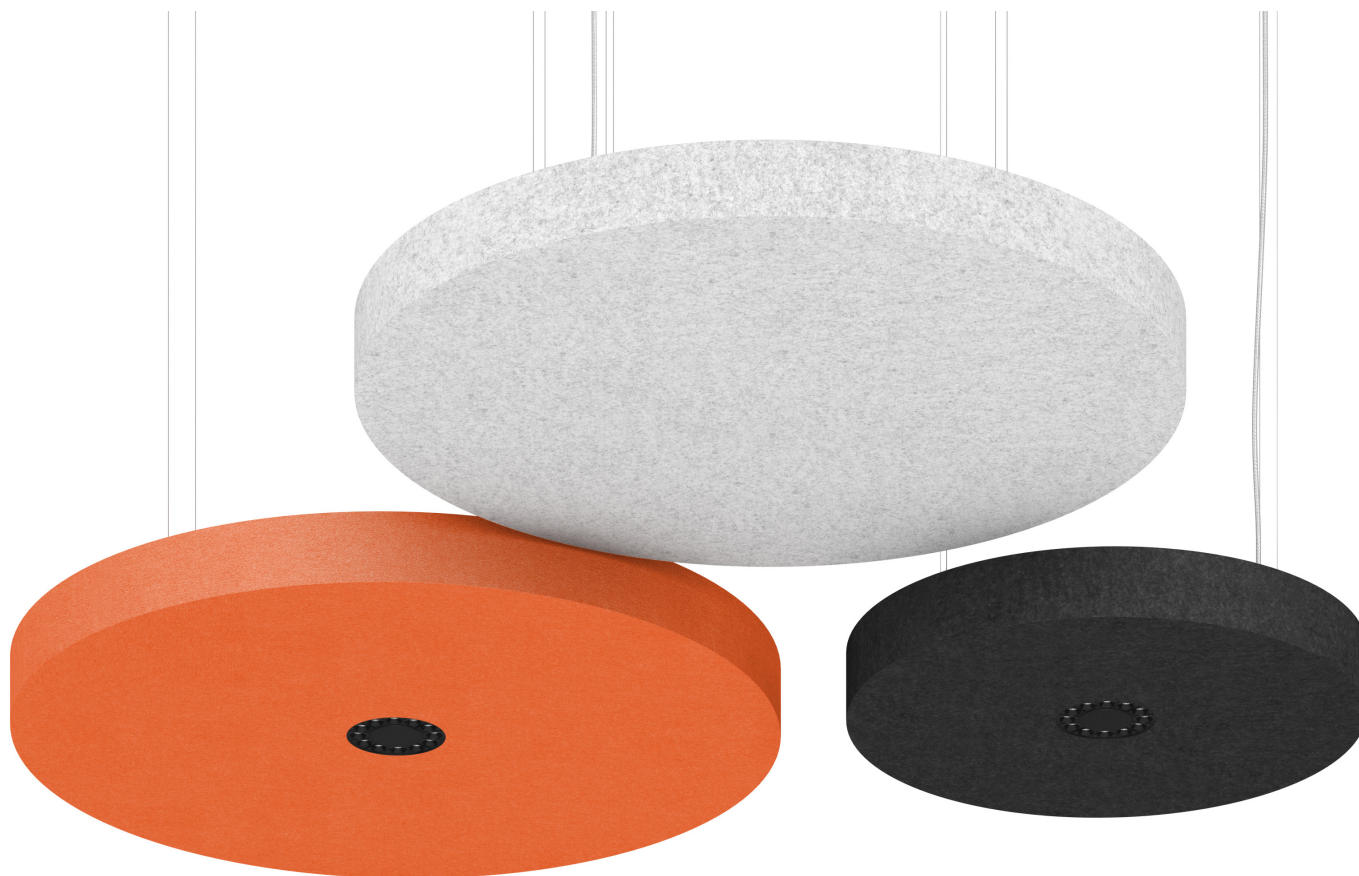
OPTIONS
ADC - ACOUSTIC DUST COVER

¹ 3000lm not available in 90CRI. 2700K only available in 90CRI and 4000K only available in 80CRI

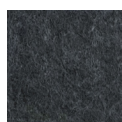
² 347 available in "DIM" 0-10V only (100-1%)

³ Phase dimming options available in 120V only

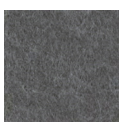
⁴ D01, DALI and DMX available up to 2500lm. DALI-2 (Type 6) provided as standard. Please consult factory for DALI (Type 8) options



ACOUSTIC BODY COLORS



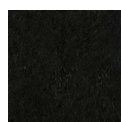
BSG
Steel gray



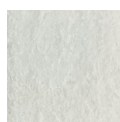
BRG
Rhino gray



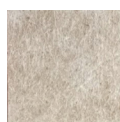
BCH
Charcoal



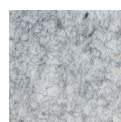
BBK
Black



BSW
Snow white



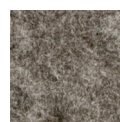
BBE
Beige



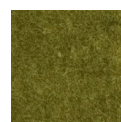
BLM
Light marble



BAG
Ash gray



BDM
Dark marble



BFG
Forest green



BAP
Apple green



BNG
Neon green



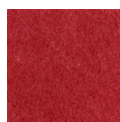
BEG
Emerald green



BYE
Yellow



BOR
Orange



BRE
Red



BGP
Grape prune



BAB
Admiral blue



BSB
Sky blue



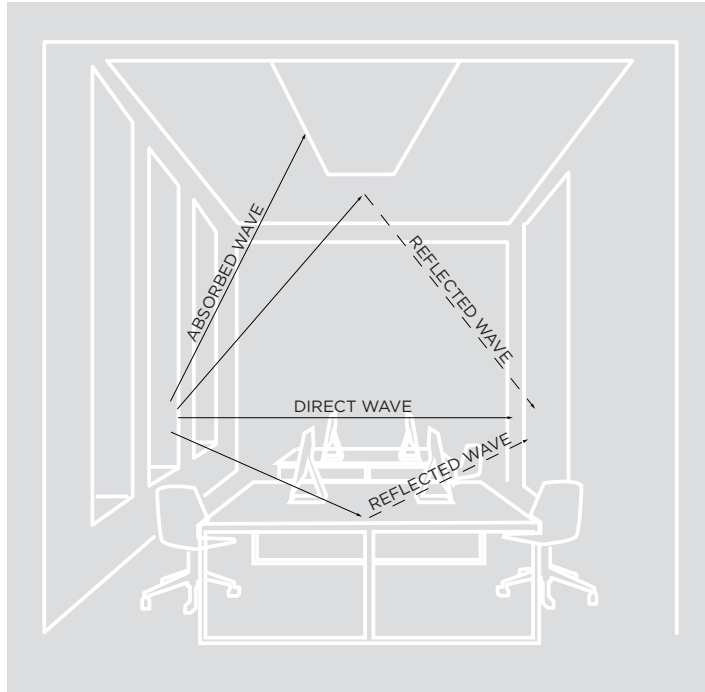
BTU
Turquoise

NOTE:

Acoustic felt colors may vary slightly due to dye-lot variation. Colors shown digitally may also vary by screen. Physical samples should be used for color reference

SOUND WAVE IN A GIVEN SPACE

When a sound wave is emitted from its source, it propels in all directions. The sound carries in a space unless it comes across an obstruction or an absorbing element such as carpeting, or upholstery. Harder materials will enable sound waves to reverberate in the space for a longer period of time. A sound can be direct like a face to face conversation and it can be reflected back from a hard surface.



REVERBERATION

The persistence of sound after it has been stopped due to multiple reflections from surfaces within a closed space



T60 : REVERBERATION TIME

The time it takes for a sound to decay by 60 dB once the source of sound has stopped. Reverberation time is the basic acoustical property of a room which depends only on its dimensions and the absorptive properties of its surfaces and contents. An acceptable value for class rooms and libraries ranges between 0.5-0.9 seconds. A suitable value for open offices and conference rooms ranges between 0.7 and 1.25 seconds



NRC - NOISE ABSORPTION COEFFICIENT

The Noise Reduction Coefficient is a scalar representation of the amount of sound energy absorbed upon striking a particular surface. an NRC of 0 indicates perfect reflection. an NRC of 1 indicates perfect absorption. Higher number equals better performance.



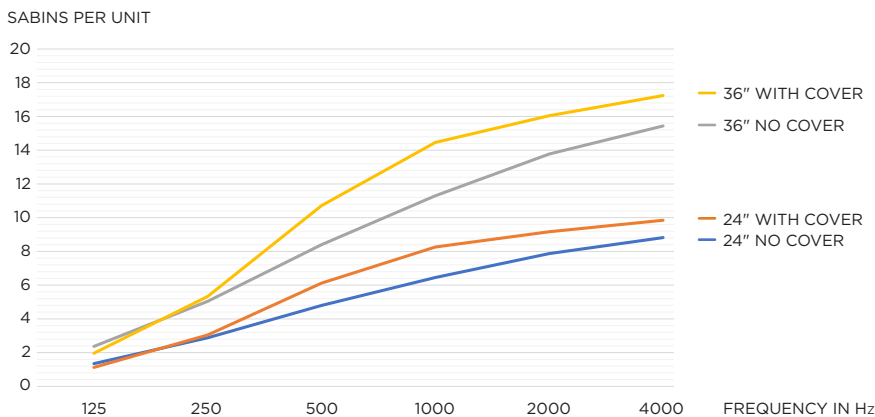
SABIN

A unit of sound absorption based on one square foot of material. Products with higher Sabin values provide more sound absorption.

SABIN COUNT

The sum total of the absorption coefficients in a room. Stronger NRC values will deliver higher Sabin counts.

ACOUSTIC PERFORMANCE



OPTICS

4" aperture with regressed LED source for maximum visual comfort
Proprietary multi-faceted reflectors with UGR <10
Beam angles available in 20°, 40°, and 60°
High gloss black or white louvers

ACOUSTIC HOUSING

Acoustic housing fabricated in 1/2" thick acoustic felt
Optional felt dust cover provides added acoustic value
Acoustic NRC value up to 0.9
Produced with recycled polyester fiber and +/- 60% from recycled water bottles
Material is 100% recyclable
0% VOC's
Fire rating ASTM E-84 Class A / CAN ULC S102

MOUNTING

Adjustable aircraft cable suspension with locking fasteners
White cable and white mounting canopies provided as standard
Suitable for various architectural ceilings (see mounting details)
Fixture weight: including cover: +/- 8 lbs (24"), +/- 12 lbs (36")

LED SYSTEM

Standard 80+ and 90+ CRI
Color consistency <2 SDCM
Available in 27K, 30K, 35K, and 40K
L90 > 60,000 hours

ELECTRICAL

Standard 0-10V, constant current drivers with 100-1% dimming range and >0.9 power factor
Standard 120/277V universal voltage with several driver options
Integral drivers are easily accessible above or through luminaire aperture

LISTING

ETL listed and conforms to UL1598 standard
Certified to CSA22.2 NO.250.0.
Suitable for dry locations

WARRANTY

5 year limited warranty
LED system rated for operation in ambient environments up to 25°C

DOWNLIGHT PERFORMANCE

LUMEN OUTPUT	DELIVERED LUMENS	SYSTEM WATTS	EFFICACY (LPW)
1000	1000	8.0	125
1500	1500	12.4	121
2000	2000	16.8	119
2500	2500	21.5	116
3000	3000	28.2	107
3500	3500	35.3	99

BASED 80+ CRI, 30K, 40D OPTIC
Lumen output and actual wattage may vary +/- 5%

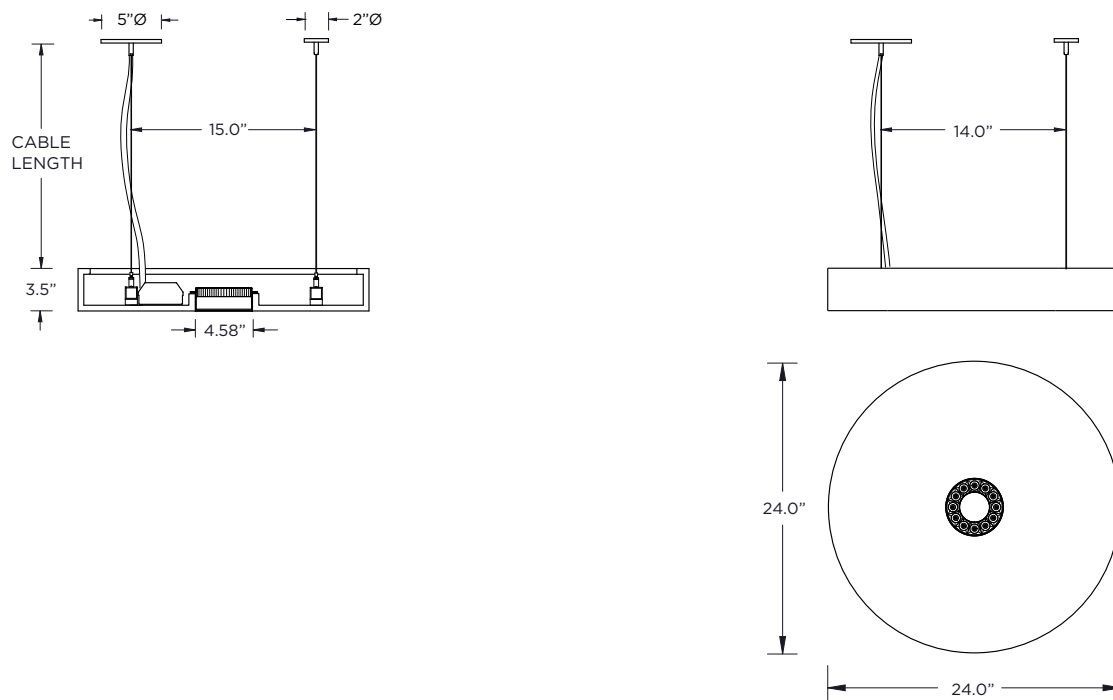
MULTIPLIERS

BEAM ANGLE	
20D	0.98
40D	1.00
60D	1.02

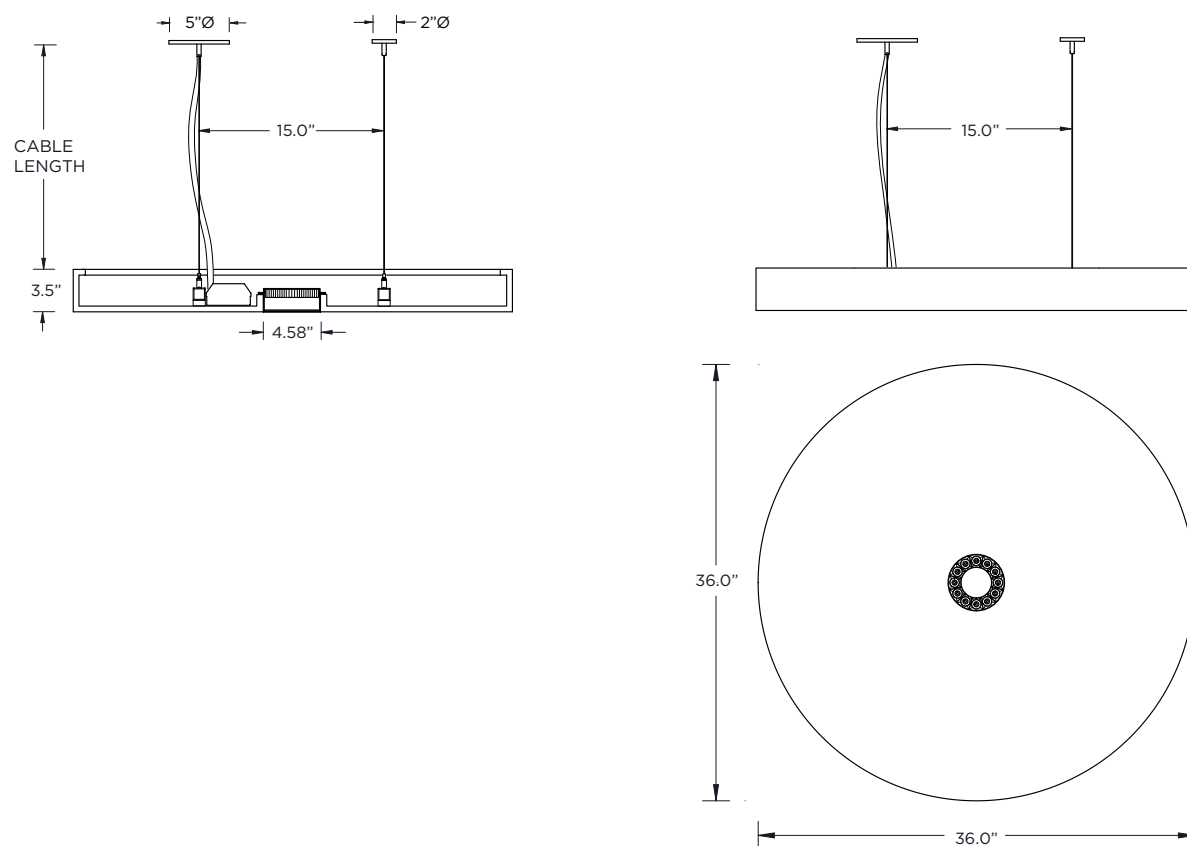
80+ CRI COLOR TEMP	
2700K	N/A
3000K	1.00
3500K	0.94
4000K	1.11

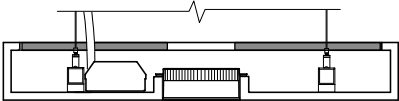
90+ CRI COLOR TEMP	
2700K	0.83
3000K	0.83
3500K	0.88
4000K	N/A

24" PENDANT



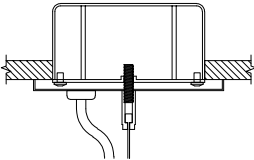
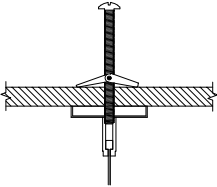
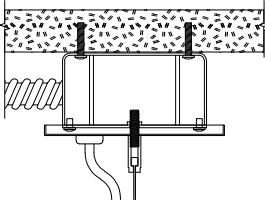
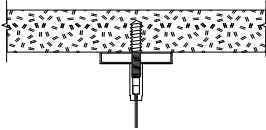
36" PENDANT





Optional acoustic dust cover
Made from 1/2" thick acoustic felt
Provides enhanced acoustic value

MOUNTING DETAILS

DRYWALL POWER FEED	DRYWALL NON POWER FEED	CONCRETE CEILING POWER FEED	CONCRETE CEILING NON POWER FEED
<p>OCTAGONAL JUNCTION BOX (BY OTHERS)</p>  <p>5"Ø</p>	 <p>2"Ø</p>	<p>OCTAGONAL JUNCTION BOX & MOUNTING SCREWS (BY OTHERS)</p>  <p>5"Ø</p>	<p>HANGER BOLT (BY OTHERS)</p>  <p>2"Ø</p>