



3G-WDZ33R

3" ZOIE WALL CYLINDER
DIRECT OR INDIRECT
7" AND 11" HEIGHT

3" diameter high performance wall mounted Zoie cylinder
LED system with performance up to 120 LPW
Delivered lumen range up to 2000lm (80+ and 90+ CRI options)
Available with direct or indirect distribution
Extruded aluminum housing with powder coated finish
Regressed LED source provides maximum visual comfort (UGR <10)
High gloss black or white louvers with proprietary optics and no glare
Companion to 3G-DZ33R Zoie downlight and cylinder family



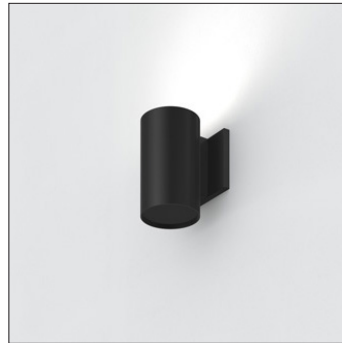
DIRECT - 7"



DIRECT - 11"



INDIRECT - 7"

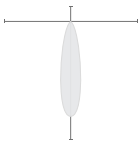


INDIRECT - 11"

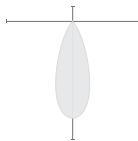


OPTICS

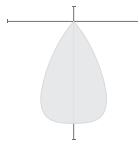
20D



40D



60D



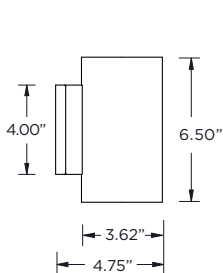
PERFORMANCE

LUMEN OUTPUT	DELIVERED LUMENS	SYSTEM WATTS	EFFICACY (LPW)
1000	1000	8.4	122.4
1500	1500	13.2	117.4
1750	1750	15.4	116.8
2000	2000	18.4	111.7

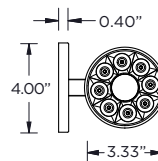
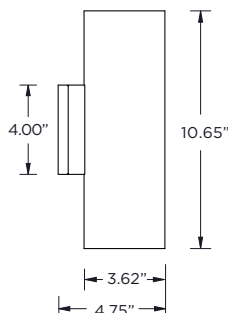
BASED ON 80+ CRI, 3000K WITH 20D OPTIC
Lumen output and actual wattage may vary +/- 5%

DIMENSIONS

7H



11H



PROJECT:		TYPE:	
CATALOG#:		DATE:	QTY:

CAT. NO	DISTRIBUTION	FIXTURE HEIGHT	LUMEN OUTPUT (DELIVERED LUMENS)
3G-WDZ33R	D - DIRECT I - INDIRECT	7H - 7" HEIGHT * 11H - 11" HEIGHT *7H available up to 1750lm (80+CRI) 7H available up to 1500lm (90+CRI) (DIM & LE options)	10 - 1000 LUMENS 15 - 1500 LUMENS 17 - 1750 LUMENS 20 - 2000 LUMENS *All lumens outputs are delivered lumens
CRI	COLOR TEMP	BEAM ANGLE	VOLTAGE
S80 - 80+ CRI H90 - 90+ CRI ¹	27K - 2700K ¹ 30K - 3000K 35K - 3500K 40K - 4000K ¹	20D - 20° 40D - 40° 60D - 60°	UNV - 120/277V 120 - 120V
DRIVER	HOUSING FINISH	LOUVER FINISH	
DIM - 0-10V (100-1%) LE - PHASE DIM ² (TRIAC/ELV, 100-1%) D01 - 0-10V (100-0.1%) ³ DALI - DALI (100-1%) ^{3,4} DHL2 - LUTRON HI-LUME ³ (1% ECOSYSTEM) DMX - DMX (100-0%) ³	BK - BLACK WH - WHITE SV - SILVER	BLV - BLACK WLV - WHITE	

¹ 2700K only available in 90CRI and 4000K only available in 80CRI

² Phase dimming options available in 120V only

³ D01, DALI, DHL2, and DMX available with 11" model only

⁴ DALI-2 (Type 6) provided as standard. Consult factory for DALI Type 8 option

PERFORMANCE

LUMEN OUTPUT	DELIVERED LUMENS	SYSTEM WATTS	EFFICACY (LPW)
1000	1000	8.4	122.4
1500	1500	13.2	117.4
1750	1750	15.4	116.8
2000	2000	18.4	111.7

BASED ON 80+ CRI, 3000K WITH 20D OPTIC

Lumen output and actual wattage may vary +/- 5%

MULTIPLIERS

COLOR TEMP	80+ CRI
2700K	N/A
3000K	1.00
3500K	0.97
4000K	1.16

COLOR TEMP	90+ CRI
2700K	0.77
3000K	0.86
3500K	0.86
4000K	N/A

BEAM ANGLE	
20D	1.00
40D	0.97
60D	0.94

HOUSING

Extruded aluminum housing with powder coated finish

OPTICS

3" aperture with regressed LED source for maximum visual comfort
High gloss black or white louvers with proprietary optics and no glare
Polycarbonate multi-faceted reflectors
Available in 20°, 40° and 60°
UGR <10

LISTING

ETL listed and conforms to UL1598 standard
Certified to CSA22.2 NO.250.0.
Rated for indoor dry or damp locations

WARRANTY

5 year limited warranty
LED system rated for operation in ambient environments up to 25°C

ELECTRICAL

Standard 0-10V, constant current drivers with 100-1% dimming range and >0.9 power factor
Standard 120/277V universal voltage with several driver options
Integral drivers are easily accessible through fixture aperture
7" models include 0-10V drivers that operate only with dimmers that sink current (not designed for source current)
Compatible 0-10V dimmers for all 7" height models listed below:
Lutron NFTV, **Lutron** DVTV, **Lutron** DVSTV, **Lutron** VIVE
RMJS-8TN, **Leviton** IP710-DLZ, **Philips** SR1200ZTUNV,
Cooper SF10P

LED SYSTEM

Standard 80+ and 90+ CRI option
Color consistency <2 SDCM
Available in 27K, 30K, 35K, and 40K
L90 >60,000 hours

MOUNTING

Square machined aluminum canopy with powder coated finish
Bracket and hardware mount to standard 4" octagonal junction box
Fixture weight: 3.69 lbs (max)