

# 3G LIGHTING

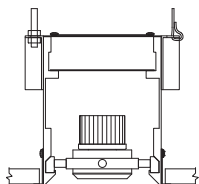
## 3GR-48RMSL

4.8" CURVED RECESSED SLOT  
MINI MADISON

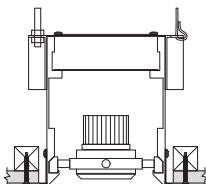
Solid aluminum double gimbal with dual axis adjustability  
Individual fixture heads can be repositioned in either direction (up to 18")  
Standard 95+ CRI LED system with performance up to 143 LPW  
Delivered lumen range up to 2250lm at 95+ CRI  
Regressed LED source for enhanced glare control  
10° to 90° beam angle options suitable for various applications  
Companion to 3G's Madison product family



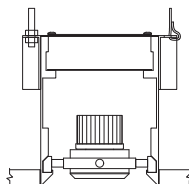
### WT - TRIM



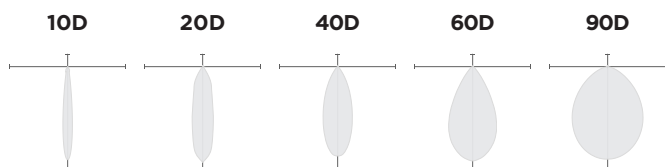
### XTR - TRIMLESS



### FX - FLANGELESS



### OPTICS



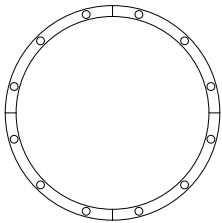
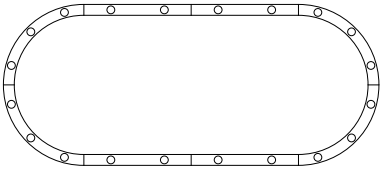
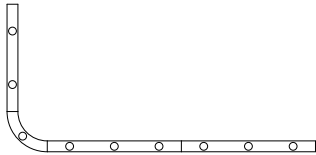
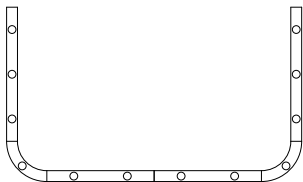
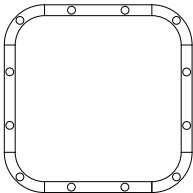
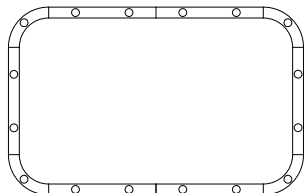
### PERFORMANCE

LUMEN OUTPUT	DELIVERED LUMENS	SYSTEM WATTS	EFFICACY (LPW)
1000	1000	8.5	117
1500	1500	13.5	111
2000	2000	18.5	108
2250	2250	21.2	106

BASED ON 95+ CRI, 3500K, 40D OPTIC  
Lumen output and actual wattage may vary +/- 5%

### SHAPES

**This product is designed to be specified using our online configurator.** The following configurations are standard offerings. For customized layouts, see page 7 for instructions

RING	CAPSULE	L-SHAPE
		
More details on page 5	More details on page 5	More details on page 6
U-SHAPE	SQUARE	RECTANGLE
		
More details on page 6	More details on page 6	More details on page 6

USE ONLINE CONFIGURATOR TO SPECIFY THIS PRODUCT LINE. [CONFIGURE](#)

<b>PROJECT:</b>		<b>TYPE:</b>	
<b>CATALOG#:</b>		<b>DATE:</b>	<b>QTY:</b>

CAT. NO	LUMEN OUTPUT**	CRI	COLOR TEMP	BEAM ANGLE	VOLTAGE
<b>3GR-48RMSL</b>	<b>10</b> - 1000 LUMENS <b>15</b> - 1500 LUMENS <b>20</b> - 2000 LUMENS <b>22</b> - 2250 LUMENS  <small>All lumen outputs are delivered lumens at 95+ CRI</small>	<b>H95</b> - 95+ CRI	<b>27K</b> - 2700K <b>30K</b> - 3000K <b>35K</b> - 3500K <b>40K</b> - 4000K	<b>10D</b> - 10° <sup>1</sup> <b>20D</b> - 20° <b>40D</b> - 40° <b>60D</b> - 60° <b>90D</b> - 90° *  <small>*90D optic supplied with lens Not available with other lens options</small>	<b>UNV</b> - 120/277V <b>120</b> - 120V <b>347</b> - 347V <sup>2</sup>

DRIVER	TRIM FLANGE	GIMBAL FINISH	HOUSING INTERIOR
<b>DIM</b> - 0-10V (100-1%) <b>LE</b> - PHASE DIM <sup>3</sup> <small>(TRIAC/ELV, 100-1%)</small> <b>D01</b> - 0-10V (100-0.1%) <b>DALI</b> - DALI (100-1%) <sup>4</sup> <b>DHL2</b> - LUTRON HI-LUME <small>(1% ECOSYSTEM)</small> <b>DMX</b> - DMX (100-0%)	<b>WT</b> - WHITE TRIM (STANDARD) <b>BT</b> - BLACK TRIM <b>XTR</b> - TRIMLESS (MUD-IN DRYWALL) <b>FX</b> - FLANGELESS	<b>NG</b> - NATURAL ALUMINUM <b>BG</b> - BLACK GIMBAL <b>WG</b> - WHITE GIMBAL	<b>BK</b> - BLACK (STANDARD) <b>WH</b> - WHITE

OPTIONS	RUN TYPE	RADIUS	RADIUS DOWNLIGHTS	TOTAL DOWNLIGHTS
<b>CP</b> - CHICAGO PLENUM <b>EMR</b> - EMERGENCY BATTERY <sup>5</sup> <small>(REMOTE)</small> <b>2C</b> - 2 CIRCUIT OPERATION <b>3C</b> - 3 CIRCUIT OPERATION <b>SF</b> - SOFTENING LENS <b>SB</b> - SANDBLASTED LENS <b>LS</b> - LINEAR SPREAD LENS <b>HXB</b> - BLACK HEXCELL LOUVER  <small>*Lens options not available with 90D optic Maximum 2 optical accessories</small>	<b>O</b> - ____' (RING) <b>P</b> - ____'x ____' (CAPSULE) <b>L</b> - ____'x ____' (L-SHAPE) <b>U</b> - ____'x ____'x ____' (U-SHAPE) <b>SQ</b> - ____'x ____' (SQUARE) <b>R</b> - ____'x ____' (RECTANGLE) <b>CUS</b> - CUSTOM SHAPE <small>(PLEASE SUBMIT DRAWING TO 3G)</small>  <small>*Product is designed to be specified using our online configurator. <a href="#">CONFIGURE</a></small>	<b>RA</b> - ____'          <small>*Ring and Capsule shapes do not require Radius selection</small>	<b>RL</b> - ____'	<b>DL</b> - ____'

<sup>1</sup> 10D and 20D reflector available up to 2000lm

<sup>2</sup> 347 available in "DIM" 0-10V only (100-1%)

<sup>3</sup> Phase dimming options available in 120V only

<sup>4</sup> DALI-2 (Type 6) provided as standard

<sup>5</sup> Supplied with enclosure with Emergency Battery and driver. Installed remotely by others. Not accessible through fixture aperture

## PERFORMANCE

LUMEN OUTPUT	DELIVERED LUMENS	SYSTEM WATTS	EFFICACY (LPW)
1000	1000	8.5	117
1500	1500	13.5	111
2000	2000	18.5	108
2250	2250	21.2	106

BASED ON 95+ CRI, 3500K, 40D OPTIC  
Lumen output and actual wattage may vary +/- 5%

## HOUSING

Housing constructed in extruded aluminum and cold rolled steel  
Designed for continuous runs in various configurations  
Maximum ceiling thickness of 1.75". Consult factory for modifications  
Standard matte black powder coated housing finish  
Trim flange with powder coated finish and 0.400" overlap  
Trimless model features a perforated galvanized mudding flange

## ADJUSTABILITY

Solid aluminum double gimbal with dual axis adjustability  
Individual fixture heads can be repositioned within channel  
Movement allowable up to 18" in either direction  
Each double gimbal can be locked in place

## OPTICS

Proprietary anodized, aluminum reflectors  
Beam angle available in 10°, 20°, 40° and 60°, and 90°  
Reflectors are field replaceable  
10° and 20° reflectors are multi-faceted (not interchangeable with other options)

## LED SYSTEM

Standard 95+ CRI  
Color consistency <2 SDCM  
Available in 27K, 30K, 35K, and 40K  
L90 > 50,000 hours

## ELECTRICAL

Standard 0-10V, constant current drivers  
100-1% dimming range and >0.9 power factor  
Standard 120/277V universal voltage with several driver options  
120V Forward Phase/Reverse Phase driver option (100-1%)  
Integral drivers are easily accessible through luminaire aperture

## MULTIPLIERS

BEAM ANGLE	
10D	0.97
20D	1.20
40D	1.00
60D	1.02
90D	0.90

COLOR TEMP	
2700K	0.98
3000K	1.00
3500K	1.00
4000K	1.02

## EMERGENCY

7W output for 90 minutes (One fixture head +/- 850lm at 95+ CRI)  
Title 24 Certified  
Remote emergency battery not accessible through fixture aperture  
Maximum remote mounting distance:  
3000lm or below - 50ft (12AWG) or 25ft (14AWG)  
Caution: Emergency Battery utilizes more than one power source and servicing should be performed by qualified personnel

## MOUNTING

New construction housing suspended via 1/4" threaded rod or suspension cables (by others)  
Trim fixture designed for use in drywall, wood, and other architectural ceiling materials  
Trimless fixture designed for use in drywall, mud-in ceiling applications  
Flangeless fixture designed for use in wood ceilings

## LISTING

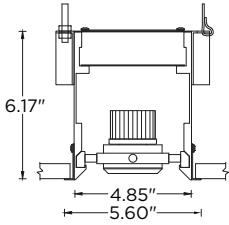
ETL listed and conforms to UL1598 standard  
Certified to CSA22.2 No.250.0.  
Rated for dry or damp locations

## WARRANTY

5 year limited warranty  
LED system rated for operation in ambient environments up to 25°C

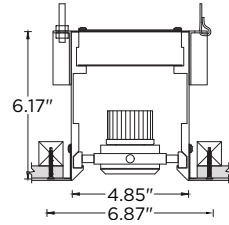
**HARD CEILING**

**WT - TRIM**



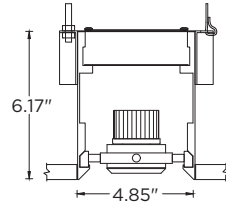
RECOMMENDED CEILING  
CUT-OUT 5.20"

**XTR - TRIMLESS**



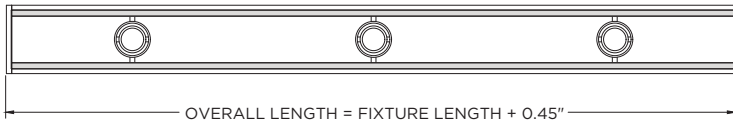
RECOMMENDED CEILING  
CUT-OUT 5.20"

**FX - FLANGELESS**

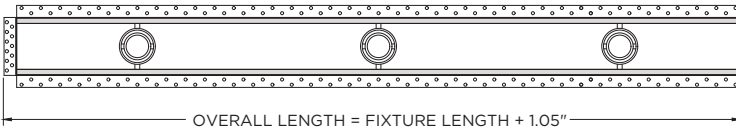


RECOMMENDED CEILING  
CUT-OUT 4.90"

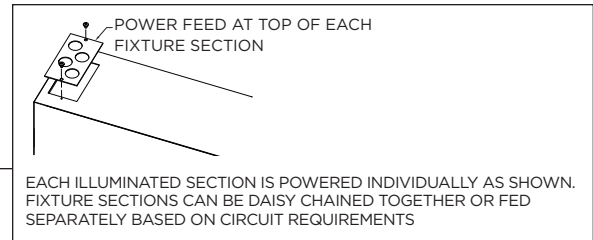
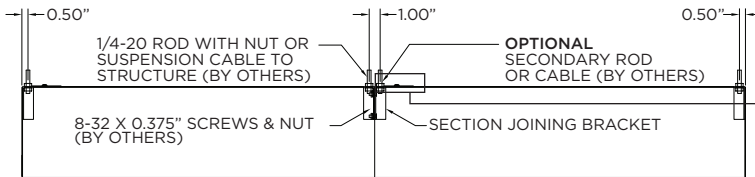
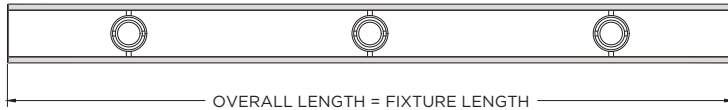
**TRIM**



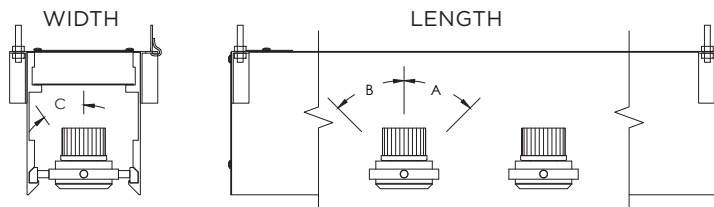
**TRIMLESS (MUD-IN DRYWALL)**



**FLANGELESS**



**GIMBAL ADJUSTABILITY**

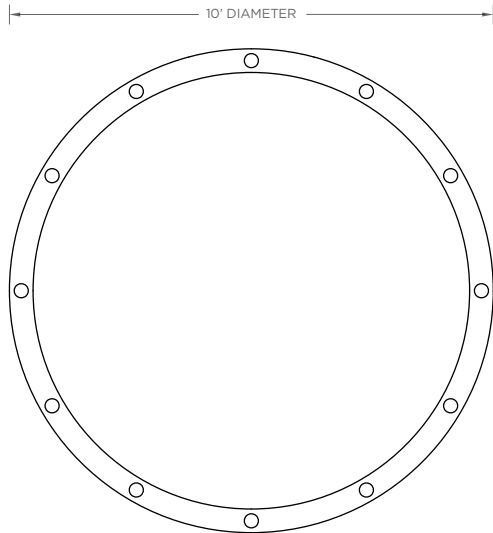


LUMEN OUTPUT	A	B	C
Up to 2000lm	45°	45°	25°
2250lm	45°	45°	20°

USE ONLINE CONFIGURATOR TO SPECIFY THIS PRODUCT LINE. [CONFIGURE](#)

## RING

RUN TYPE	TOTAL DOWNLIGHTS
<input checked="" type="radio"/> - RING <input type="radio"/> - RING	12
10' DIAMETER <input type="text"/>	



**Step 1:** Select diameter: **2'-60'**

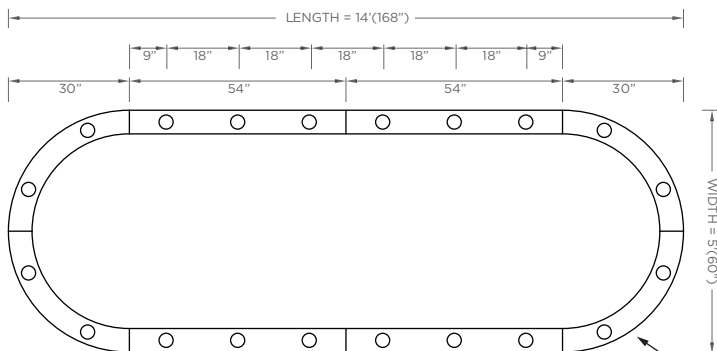
**Step 2:** Select the total number of downlights

**Configurator Logic:** Downlight options scale with diameter selection

USE ONLINE CONFIGURATOR TO SPECIFY THIS PRODUCT LINE. [CONFIGURE](#)

## CAPSULE (PILL)

RUN TYPE	RADIUS	RADIUS DOWNLIGHTS	TOTAL DOWNLIGHTS
<input checked="" type="radio"/> - CAPSULE <input type="radio"/> - CAPSULE	30"	2	20
5' (5' LONG) <input type="text"/>			
14' (14' LONG) <input type="text"/>			



**Step 1:** Select width: **2'-10'**

**Step 2:** Select length: **4'-100'**

**Step 3:** Select the number of downlights in radius segments

**Step 4:** Select the number of downlights

**Configurator Logic:** Downlight options scale with diameter selection

**RADIUS / RADIUS DOWNLIGHTS**  
30" RADIUS / 2 DOWNLIGHTS

USE ONLINE CONFIGURATOR TO SPECIFY THIS PRODUCT LINE. [CONFIGURE](#)

## L-SHAPE / U-SHAPE / SQUARE / RECTANGLE

RUN TYPE		RADIUS	RADIUS DOWNLIGHTS	TOTAL DOWNLIGHTS
U - U-SHAPE ✕		18" ▾	2 ▾	14 ▾
12' (12' LONG) ▾	----- ▾			
8' (8' LONG) ▾	----- ▾			
10' (10' LONG) ▾	----- ▾			

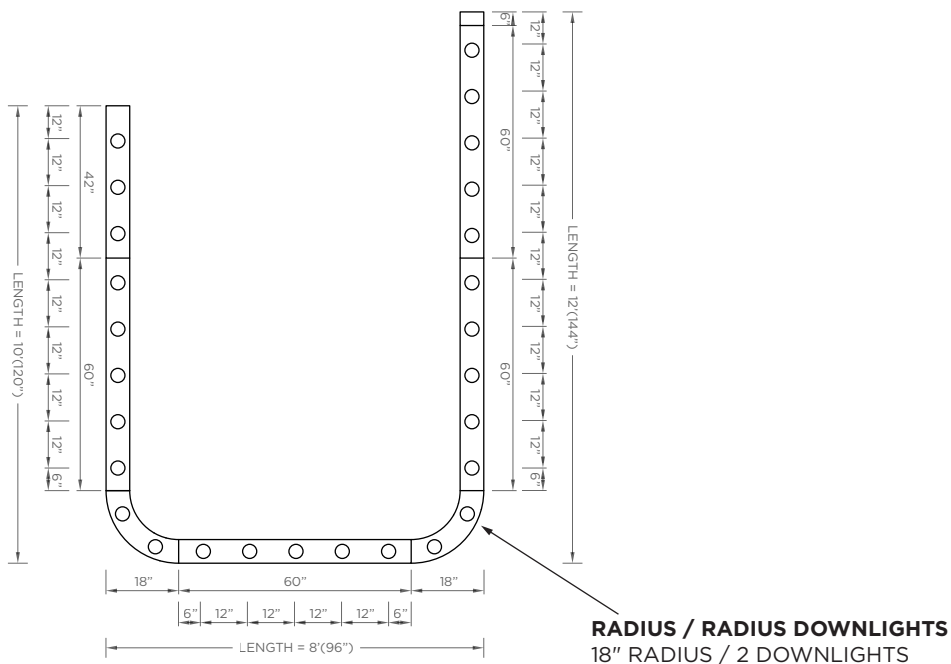
**Step 1:** Select lengths (2'-100' each side)

**Step 2:** Select soft corner radius (12"-60")

**Step 3:** Select number of downlights in radius segments

**Step 4:** Select the total number of downlights

**Configurator Logic:** The lengths of each side dictate the soft corner radius size available. Once radius is selected, choose the number of downlights within the radius from the drop down list. Choose the total number of downlights within the entire run from the drop down list. Downlights are distributed proportionally along straight sides according to length, with on-center spacing rules applied automatically.



## CUSTOM

RUN TYPE	RADIUS	RADIUS DOWNLIGHTS	TOTAL DOWNLIGHTS
CUS - CUSTOM ✕	----- ▼	----- ▼	----- ▼

### Option 1: CAD Layout

Download CAD blocks from the product page and create your layout using available modules in your preferred **CAD software**, submit a PDF or **DWG/DXF file**.

Modules:

- **Radius options:** 12", 18", 24", 30", 36", 42", 48", 54", 60"
- **Angle segments:** 30°, 45°, 60°, 90°
- **Straight runs:** available in **6" increments**

**Configurator Logic:** 3G reviews all custom submissions and returns a validated layout with part numbers, downlight counts, sectioning, and circuit guidance.

### Option 2: Sketch

Submit a simple sketch with dimensions, number of downlights and spacing, and we'll generate the closest configuration.

