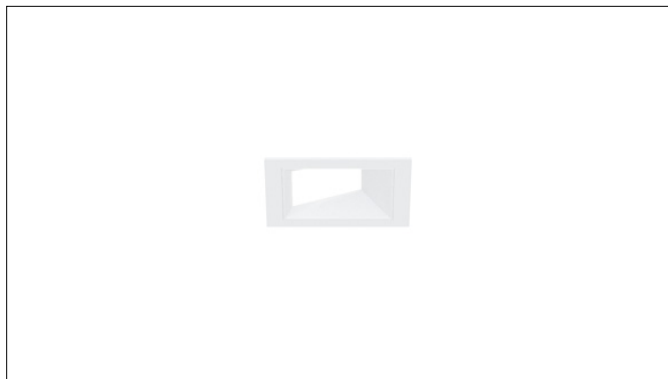


# 3G LIGHTING

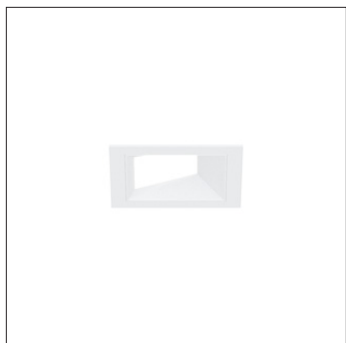
## 3G-DL20SWW

2" SQUARE WALL WASH

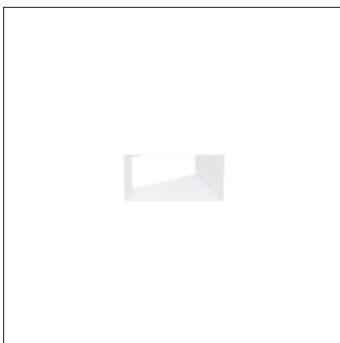
2" square high performance wall wash downlight  
Standard 95+ CRI LED system with performance up to 76 LPW  
Delivered lumen range up to 1250lm at 95+ CRI  
Installation and fully serviceable from below ceiling plane  
Proprietary wall wash optic and lens suitable for various applications



### TRIM FLANGE



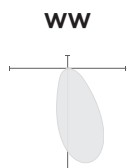
### TRIMLESS



### MILLWORK



### OPTICS



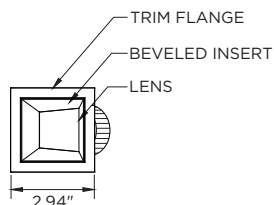
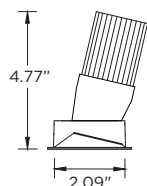
### PERFORMANCE

LUMEN OUTPUT	DELIVERED LUMENS	SYSTEM WATTS	EFFICACY (LPW)
750	750	9.8	76
1000	1000	13.8	72
1250	1250	18.7	67

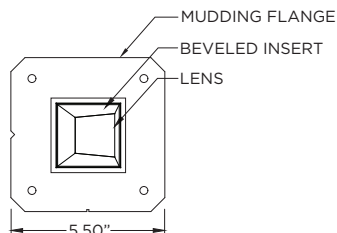
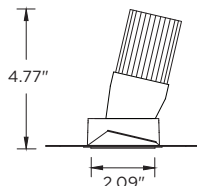
BASED ON 95+ CRI, 3500K, WITH WALL WASH OPTIC  
Lumen output and actual wattage may vary +/- 5%

### DIMENSIONS

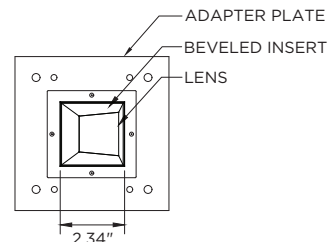
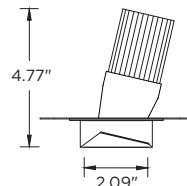
#### TRIM FLANGE



#### TRIMLESS



#### MILLWORK



<b>PROJECT:</b>		<b>TYPE:</b>	
<b>CATALOG#:</b>		<b>DATE:</b>	<b>QTY:</b>

CAT. NO	LUMEN OUTPUT	CRI	COLOR TEMP	BEAM ANGLE	VOLTAGE
<b>3G-DL20SWW</b>	<b>07-</b> 750 LUMENS <b>10-</b> 1000 LUMENS <b>12-</b> 1250 LUMENS  <small>All lumen outputs are delivered lumens at 95+ CRI</small>	<b>H95</b> - 95+ CRI	<b>24K</b> - 2400K <b>27K</b> - 2700K <b>30K</b> - 3000K <b>35K</b> - 3500K <b>40K</b> - 4000K	<b>WW</b> - WALL WASH	<b>UNV</b> - 120/277V <b>120</b> - 120V

DRIVER	TRIM FLANGE	BEVELED INSERT	HOUSING TYPE
<b>DIM</b> - 0-10V (100-1%) <b>LE</b> - PHASE DIM <sup>1,2</sup> <small>(TRIAC/ELV, 100-1%)</small> <b>D01</b> - 0-10V (100-0.1%) <b>DALI</b> - DALI (100-1%) <sup>3</sup> <b>RDIM</b> - REMOTE 0-10V (100-1%) <sup>4</sup> <small>(FOR LUTRON ATHENA RF NODE)</small> <b>RDALI</b> - REMOTE DALI (100-1%) <sup>4</sup> <small>(FOR LUTRON ATHENA RF NODE)</small>	<b>WT</b> - WHITE <b>BT</b> - BLACK <b>ST</b> - SILVER <b>XTR</b> - TRIMLESS <small>(MUD-IN DRYWALL)</small> <b>MWF</b> - FLANGELESS <sup>5</sup> MILLWORK	<b>WI</b> - WHITE <b>BI</b> - BLACK <b>SI</b> - SILVER	<b>RMD</b> - REMODEL (NON-IC) <b>NCF</b> - NEW CONSTRUCTION FRAME (NON-IC) <b>NC</b> - NEW CONSTRUCTION <sup>6</sup> <small>HOUSING (CP RATED)</small> <b>IC</b> - NEW CONSTRUCTION <sup>6</sup> <small>IC HOUSING</small>  <small>NCF, NC and IC housings ship with nailer type bar hangers</small>

OPTIONS
<b>AWN</b> - LUTRON ATHENA RF NODE <sup>7</sup> <b>WL</b> - WET LOCATION RATED <b>CP</b> - CHICAGO PLENUM <sup>8</sup> <b>EMR</b> - REMOTE EMERGENCY BATTERY <sup>9</sup>

- <sup>1</sup> Phase dimming options available in 120V only  
<sup>2</sup> Phase dimming is not available in 750lm  
<sup>3</sup> DALI-2 (Type 6) provided as standard  
<sup>4</sup> Supplied with enclosure with Athena RF Node and driver. Installed remotely by others. Not accessible through fixture aperture  
<sup>5</sup> MWF not available with Remodel (NON-IC)  
<sup>6</sup> New Construction housing (NC) and IC housing option available up to 1000lm  
<sup>7</sup> Available with RDIM or RDALI driver options  
<sup>8</sup> Chicago Plenum option available with New Construction Housing  
<sup>9</sup> Supplied with enclosure with Emergency Battery and driver. Installed remotely by others. Not accessible through fixture aperture

## PERFORMANCE

LUMEN OUTPUT	DELIVERED LUMENS	SYSTEM WATTS	EFFICACY (LPW)
750	750	9.8	76
1000	1000	13.8	72
1250	1250	18.7	67

BASED ON 95+ CRI, 3500K, WITH WALL WASH OPTIC  
Lumen output and actual wattage may vary +/- 5%

## MULTIPLIERS

COLOR TEMP	
2400K	0.91
2700K	0.95
3000K	0.97
3500K	1.00
4000K	1.03

## HOUSING

Remodel, new construction frame, new construction and IC housing options for installation in any site condition  
Maximum ceiling thickness of 1.00". Consult factory for modifications  
All housing options (except millwork) designed to be easily converted in field to trim or trimless with minimal components  
Housing rated for #12 AWG (4 in, 4 out), 90°C conductors and through branch wiring

## BEVELED INSERT

Cast aluminum beveled insert with matte powder coated finish  
2" aperture with regressed LED source for enhanced glare control

## TRIM

Cast aluminum trim flange with matte powder coated finish and minimal 0.375" overlap

## TRIMLESS

Mudding flange features a perforated surface for easy mud-in application  
Integral blocking support provided to ensure fixture is properly secured within ceiling structure

## OPTICS

Proprietary wall wash optic  
Asymmetrical lens provides uniformity and smooth illumination across and down the wall  
Regressed LED source for enhanced glare control

## LED SYSTEM

Standard 95+ CRI  
Color consistency <2 SDCM  
Available in 24K, 27K, 30K, 35K, and 40K  
L90 > 50,000 hours

## ELECTRICAL

Standard 0-10V, constant current drivers  
100-1% dimming range and >0.9 power factor  
Standard 120/277V universal voltage with several driver options  
120V Forward Phase/Reverse Phase driver option (100-1%)  
Integral drivers are easily accessible through luminaire aperture

## EMERGENCY

7W output for 90 minutes (+/- 530lm at 95+ CRI). Title 24 Certified Remote emergency battery (not accessible through fixture aperture)  
Maximum remote mounting distance: 50ft (12AWG) or 25ft (14AWG)  
Caution: Emergency Battery utilizes more than one power source and servicing should be performed by qualified personnel

## MOUNTING

Trim fixture designed for use in drywall, wood, acoustic, and other architectural ceilings  
Trimless fixture designed for use in drywall, mud-in ceiling applications  
Millwork Flangeless option for wood ceilings and acoustic  
Recommended trim and mud-in trimless cut-out (2.625"x2.625")  
Recommended Millwork Flangeless cut-out (2.375"x2.375")  
All housing types except remodel ship with nailer type bar hangers (14" to 26" extension)

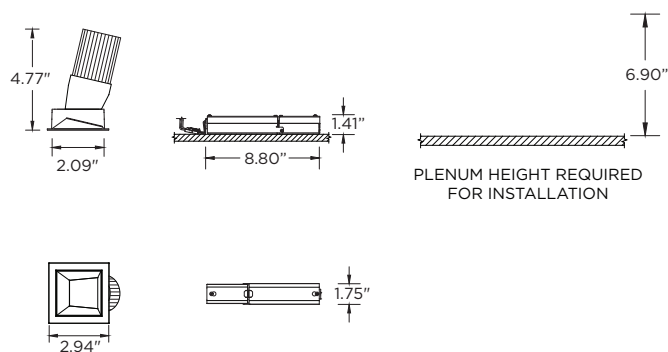
## LISTING

ETL listed and conforms to UL1598 standard  
Certified to CSA22.2 NO.250.0.  
Rated for dry or damp locations

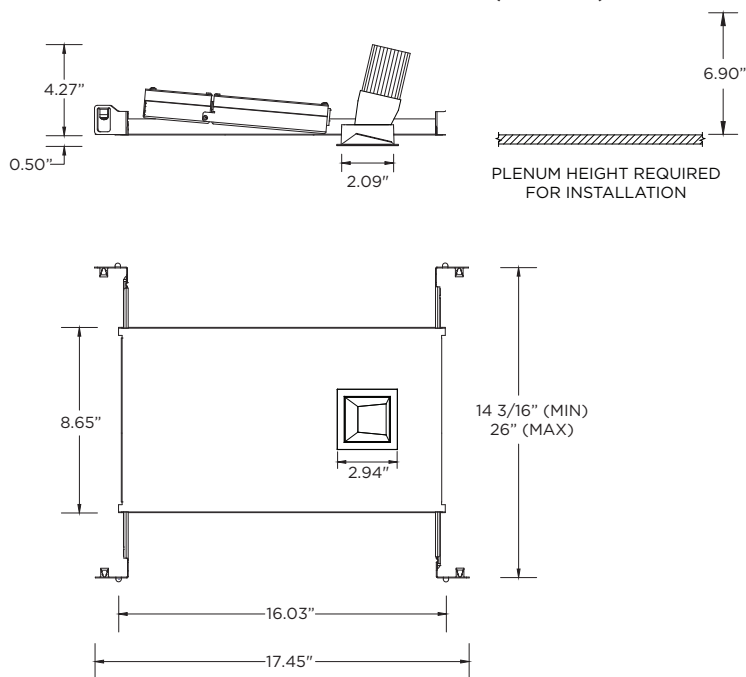
## WARRANTY

5 year limited warranty  
LED system rated for operation in ambient environments up to 25°C

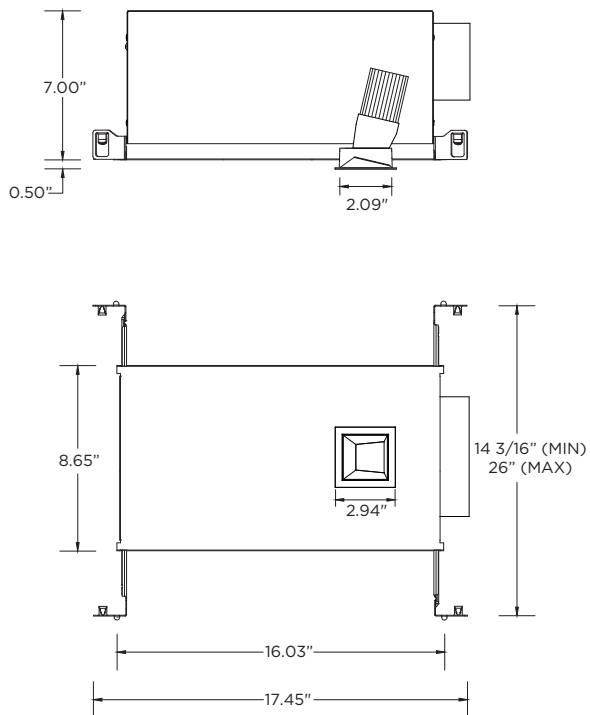
**RMD - REMODEL (NON-IC)**



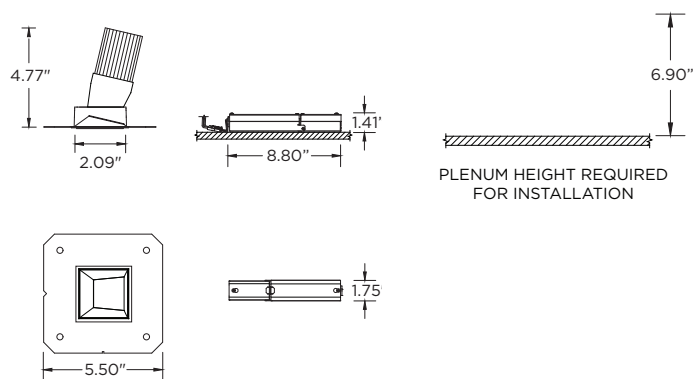
**NCF - NEW CONSTRUCTION FRAME (NON-IC)**



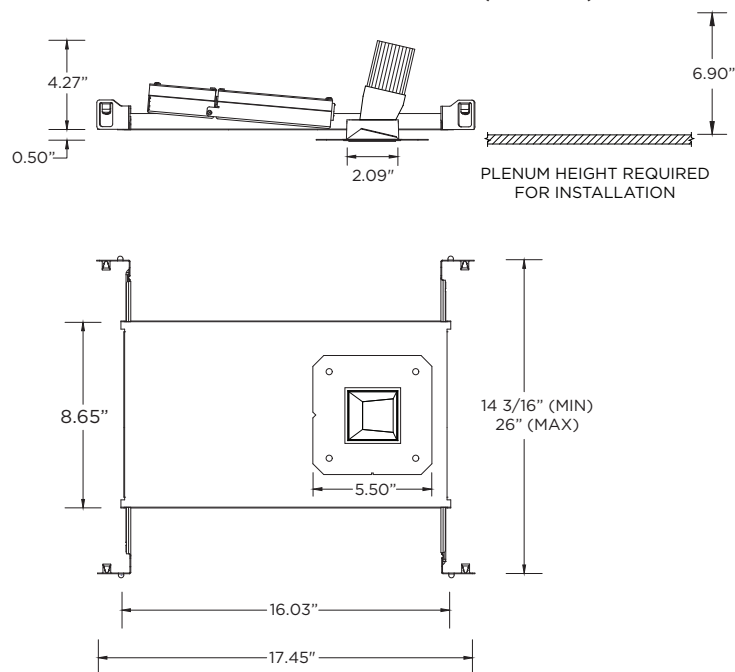
**NC - NEW CONSTRUCTION HOUSING**  
IC RATED - MAX 1000LM  
NON-IC AND CP RATED - MAX 1000LM



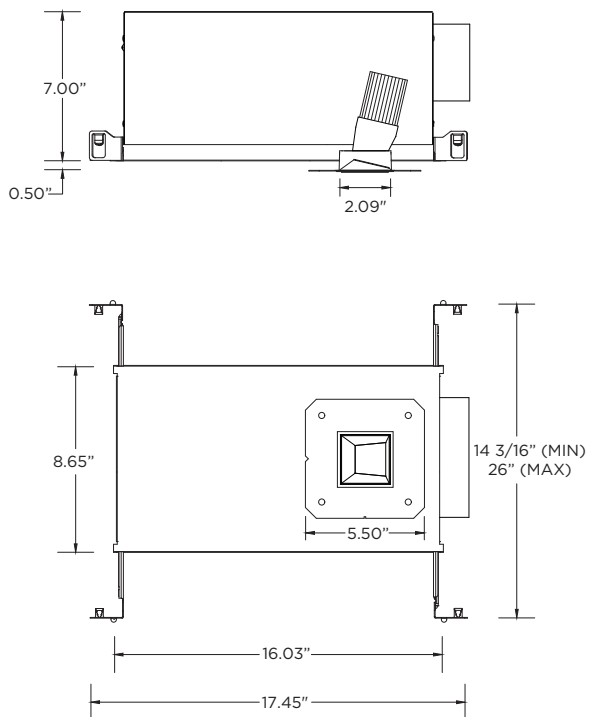
**RMD - REMODEL (NON-IC)**



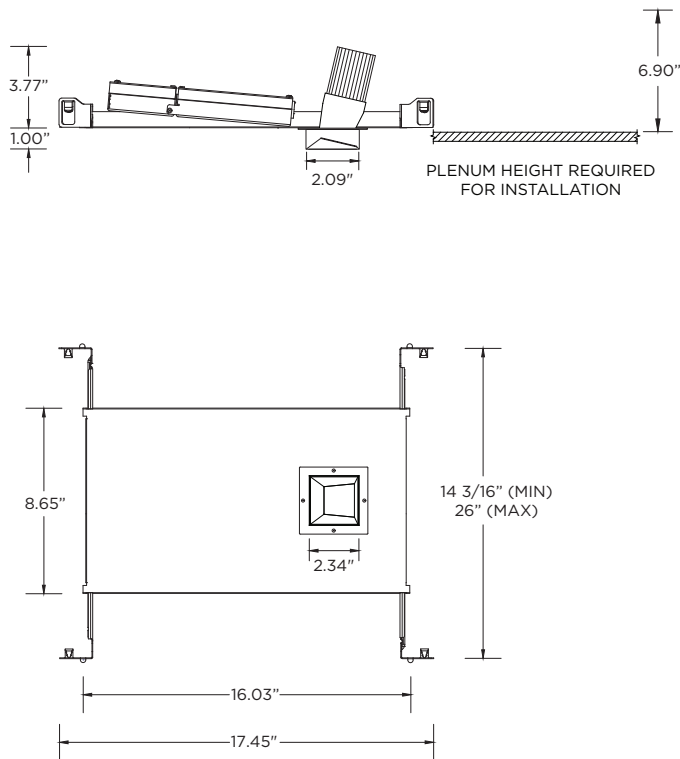
**NCF - NEW CONSTRUCTION FRAME (NON-IC)**



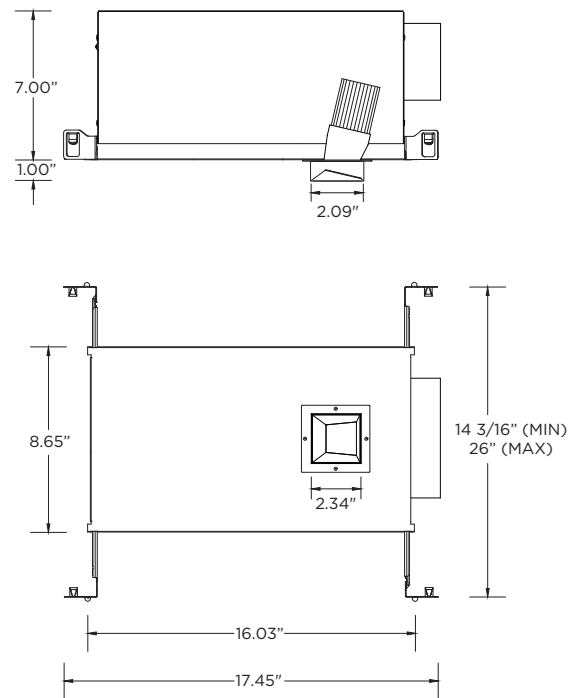
**NC - NEW CONSTRUCTION HOUSING**  
IC RATED - MAX 1000LM  
NON-IC AND CP RATED - MAX 1000LM



**NCF - NEW CONSTRUCTION FRAME (NON-IC)**



**NC - NEW CONSTRUCTION HOUSING**  
IC RATED - MAX 1000LM  
NON-IC AND CP RATED - MAX 1000LM

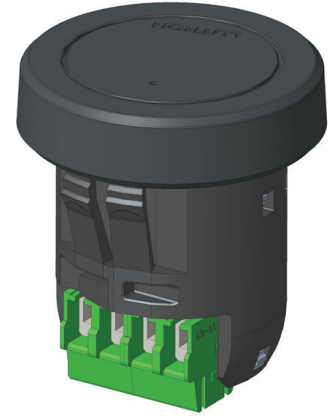


The Athena wireless node (AWN) is a radio frequency (RF) device that enables simple, digital control of individual light fixtures in an Athena or myRoom XC control system. AWN is offered as a factory-installed RF control option across select 3G luminaires.

The Athena wireless processor or Clear Connect gateway – Type X is required to operate an Athena wireless node in an Athena or myRoom XC control system via a simple setup process using an iOS® or Android® compatible app. This enables these fixtures to be controllable by other Lutron wall controls, keypads, sensors, Pico remote controls, etc



**AWNR**  
RF NODE ONLY  
FACTORY-INSTALLED  
FOR INDIVIDUAL  
FIXTURE CONTROL



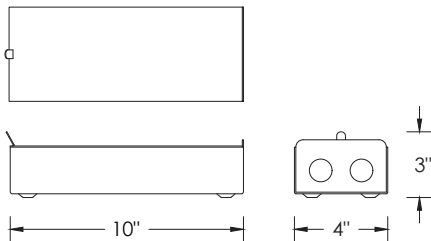
### DRIVER COMPATIBILITY

Driver / dimming types:

- RDIM – REMOTE 0-10V (100-1%)
- RDALI – REMOTE DALI-2 (Type 6, 100-1%)

### REMOTE ELECTRICAL ENCLOSURE

Maximum distance of 100FT using 12AWG



### DEFAULT BEHAVIOR PRIOR TO PROGRAMMING

Light level defaults to 100%

Device runs an unprogrammed startup sequence until added to the Athena system

### RF PLACEMENT (FIELD GUIDELINE)

Each node should be installed within 25 ft (7.6 m) of two or more Clear Connect – Type X devices (nodes / gateways / processors)  
Follow Lutron Athena design guidelines for device density and coverage

### SERVICING

Not accessible through luminaire aperture

If the Awnr node is replaced, it must be re-added / re-commissioned within the Athena system by the controls contractor.