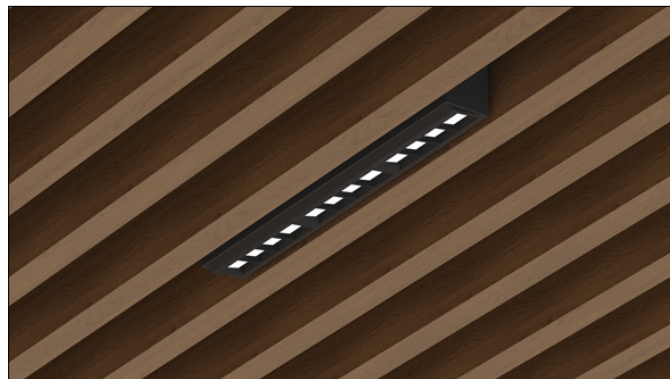




## 3G-RMZ12WW-SC

12" ZOIE WALL WASH DOWNLIGHT  
SPECIALTY CEILINGS

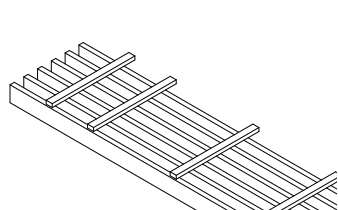
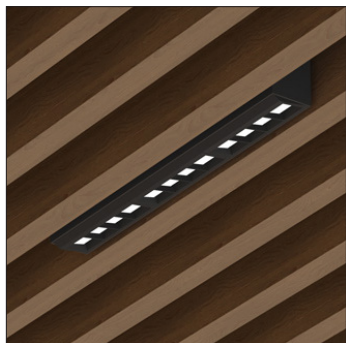
12" wall wash downlight designed for integration with specialty ceilings  
Standard 90+ CRI LED system with performance up to 91 LPW  
Delivered lumen range up to 2500lm at 90+ CRI  
Proprietary wall wash optic and lens with enhanced glare control  
Matte black and matte white louver finish  
Companion to 3G's Zoie product family



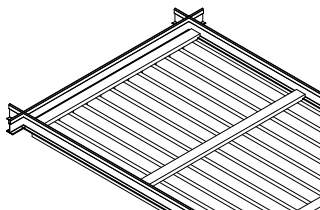
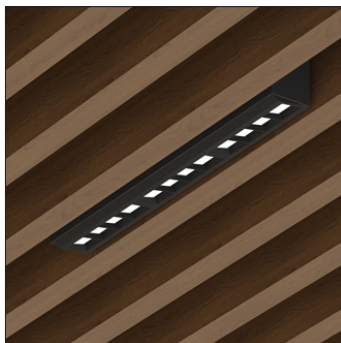
Compatible with various architectural ceiling systems

### CEILING TYPES

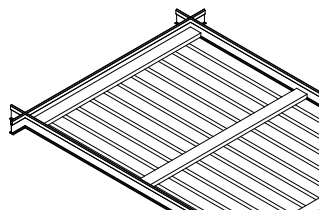
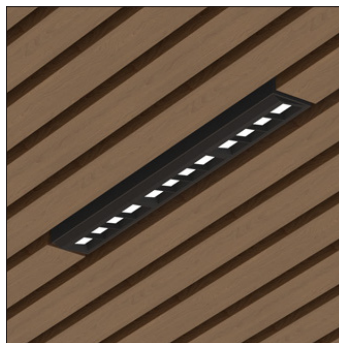
#### GRILLE



#### GRILLE TEGULAR

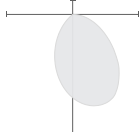


#### LINEAR TEGULAR



### OPTICS

WW



### PERFORMANCE

LUMEN OUTPUT	DELIVERED LUMENS	SYSTEM WATTS	EFFICACY (LPW)
1000	1000	10.9	91
1500	1500	17.0	88
2000	2000	22.9	87
2500	2500	29.0	86

BASED ON 90+ CRI, 3500K AND WALL WASH OPTIC  
Lumen output and actual wattage may vary +/- 5%

### STANDARD FINISHES



BLACK COLLAR FINISH  
BLACK LOUVER FINISH

<b>PROJECT:</b>		<b>TYPE:</b>	
<b>CATALOG#:</b>		<b>DATE:</b>	<b>QTY:</b>

CAT. NO	LUMEN OUTPUT	CRI	COLOR TEMP	BEAM ANGLE	VOLTAGE
<b>3G-RMZ12WW-SC</b>	<b>10</b> - 1000 LUMENS <b>15</b> - 1500 LUMENS <b>20</b> - 2000 LUMENS <b>25</b> - 2500 LUMENS <sup>1</sup>  All lumen outputs are <b>delivered lumens</b> at 90+ CRI	<b>H90</b> - 90+ CRI	<b>27K</b> - 2700K <b>30K</b> - 3000K <b>35K</b> - 3500K <b>40K</b> - 4000K	<b>WW</b> - WALL WASH	<b>UNV</b> - 120/277V <b>120</b> - 120V

DRIVER	COLLAR FINISH	LOUVER FINISH	HOUSING TYPE
<b>DIM</b> - 0-10V (100-1%) <b>LE</b> - PHASE DIM (TRIAC/ELV, 100-1%) <sup>2</sup> <b>DO1</b> - 0-10V (100-0.1%) <b>DALI</b> - DALI (100-1%) <sup>3</sup> <b>DHL2</b> - LUTRON LDE1 (1% ECOSYSTEM) <b>DMX</b> - DMX (100-0%)	<b>BK</b> - BLACK <b>WH</b> - WHITE	<b>BLV</b> - BLACK <b>WLV</b> - WHITE	<b>NC</b> - NEW CONSTRUCTION HOUSING <sup>4</sup> <b>SH</b> - SHALLOW HOUSING <sup>5</sup>

CEILING TYPE	OPTIONS
<b>GR</b> - GRILLE <b>GTG</b> - GRILLE TEGULAR <b>LTG</b> - LINEAR TEGULAR	<b>CP</b> - CHICAGO PLENUM <sup>6</sup>

- <sup>1</sup> 2500lm available with NC (New Construction Housing) only
- <sup>2</sup> Phase dimming options available in 120V only
- <sup>3</sup> DALI-2 (Type 6) provided as standard. Please consult factory for DALI (Type 8) options
- <sup>4</sup> New Construction Housing (NC) not available with Linear Tegular (LTG) ceiling types
- <sup>5</sup> Shallow Housing (SH) not available with Grille (GR) and Grille Tegular (GTG) ceiling types
- <sup>6</sup> Chicago Plenum option available with Shallow Housing (SH) and Linear Tegular (LTG) ceiling

## PERFORMANCE

LUMEN OUTPUT	DELIVERED LUMENS	SYSTEM WATTS	EFFICACY (LPW)
1000	1000	10.9	91
1500	1500	17.0	88
2000	2000	22.9	87
2500	2500	29.0	86

BASED ON 90+ CRI, 3500K AND WALL WASH OPTIC  
Lumen output and actual wattage may vary +/- 5%

## MULTIPLIERS

COLOR TEMP	
2700K	0.92
3000K	0.97
3500K	1.00
4000K	0.98

## HOUSING

New construction and shallow housing options available  
New construction housing features an adjustable fixture collar with sliding mechanism for in field adjustment. Maximum 5 1/4" wood slat height  
Housings rated for #12 AWG (4 in, 4 out), 90°C conductors and through branch wiring

## OPTICS

Proprietary high performance wall wash optic and lens  
Uniform illumination across the top and down the wall  
1.14" apertures with enhanced glare control  
Matte black or matte white faceted louver finish

## LED SYSTEM

Standard 90+ CRI  
Color consistency <2 SDCM  
Available in 27K, 30K, 35K, and 40K  
L90 > 60,000 hours

## ELECTRICAL

Standard 0-10V, constant current drivers  
100-1% dimming range and >0.9 power factor  
Integral drivers are located within fixture housing  
Accessible from above ceiling only with new construction housing option  
Accessible through fixture aperture with shallow housing option

## MOUNTING

All housings ship with adjustable C-Channel bar hangers  
Designed for integration with wood slat ceiling systems (see drawings)  
Adjustable fixture collar in new construction housing for in field adjustment  
Infill panel accessory available with ceiling manufacturer (supplied by others)

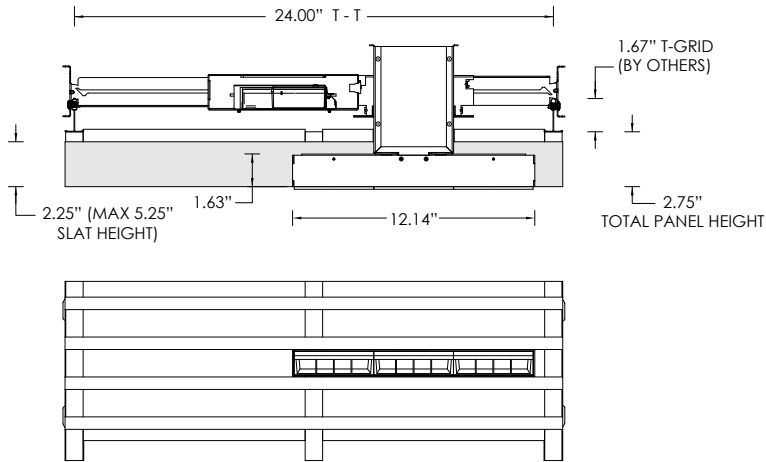
## LISTING

ETL listed and conforms to UL1598 standard  
Certified to CSA22.2 NO.250.0.  
Rated for dry or damp locations

## WARRANTY

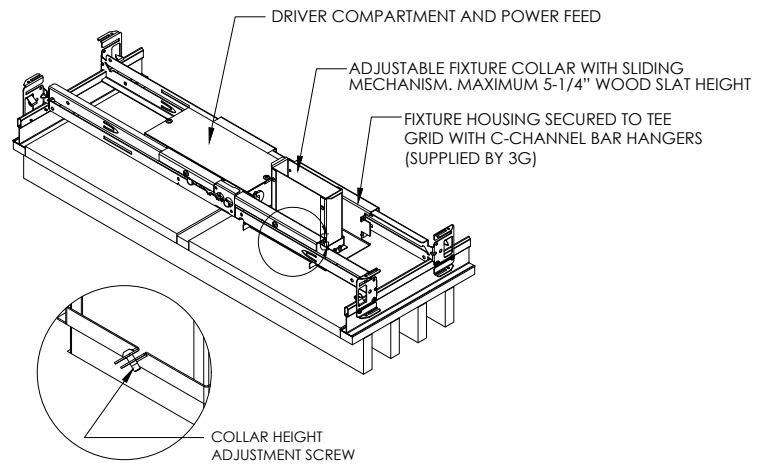
5 year limited warranty  
LED system rated for operation in ambient environments up to 25°C

**GR - GRILLE (CEILING SYSTEM BY OTHERS)**



COMPATIBLE CEILING SYSTEMS	
MANUFACTURER	COMPATIBLE PART NUMBER
ARMSTRONG	6323L_S03 (04, 06, 07, 08, 10, 11, 12, 13), 6324L_S02 (03, 04, 06, 07, 08, 10, 11) 6325L_S02 (06), 6333L_S14 (15, 16, 17), 6334L_S14 (15, 16, 17), 6335L_S14 (15, 16, 17), 7091, 7092, 7093, 7094, 7095, 7096, 7097, 7098, 7099, 7265
9WOOD	2116-2

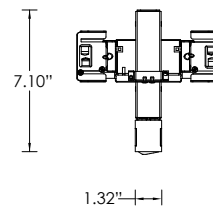
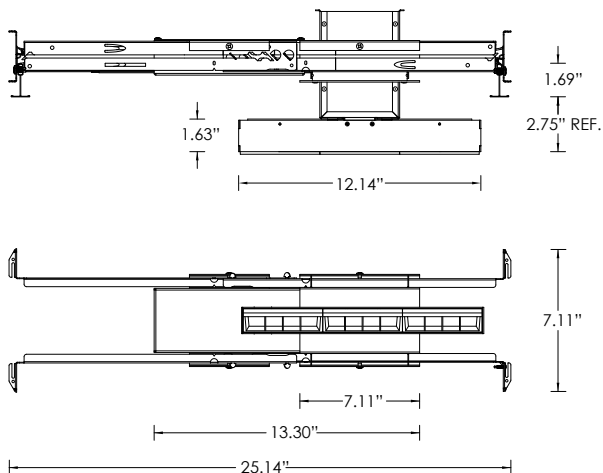
**NC - NEW CONSTRUCTION HOUSING**



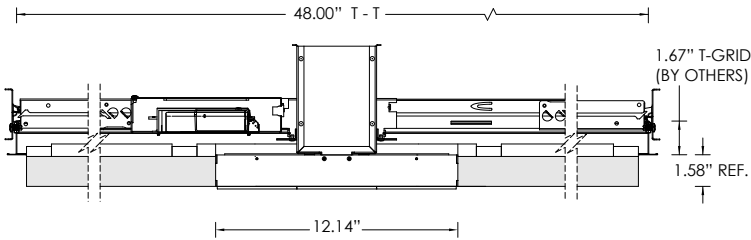
**PLEASE NOTE:** FIXTURE INSTALLATION MUST BE COORDINATED WITH CEILING PANEL INSTALLATION TO ENSURE FIXTURE ACCESSIBILITY CEILING SYSTEM AND 5/8" THICK INFILL PANEL (BY OTHERS)

**HOUSING TYPES**

**NC - NEW CONSTRUCTION HOUSING**

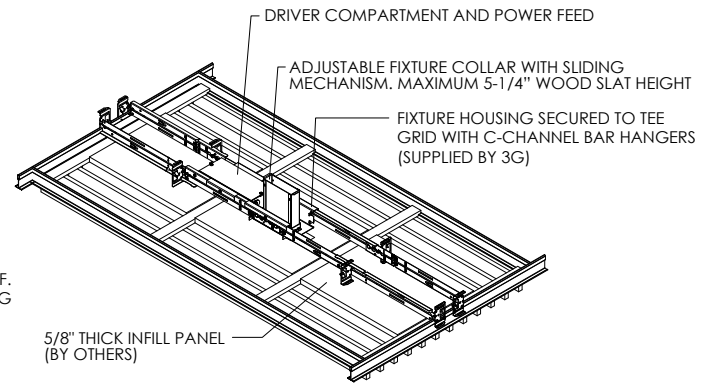


**GTG - GRILLE TEGULAR (CEILING SYSTEM BY OTHERS)**



COMPATIBLE CEILING SYSTEMS	
MANUFACTURER	COMPATIBLE PART NUMBER
ARMSTRONG	6723F51L4T5
9WOOD	2116-2

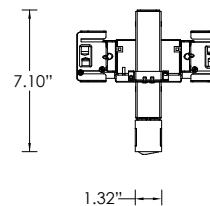
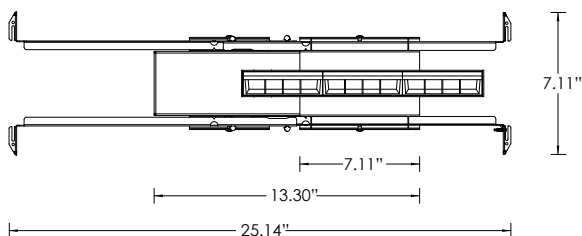
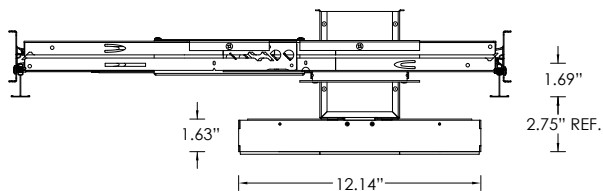
**NC - NEW CONSTRUCTION HOUSING**



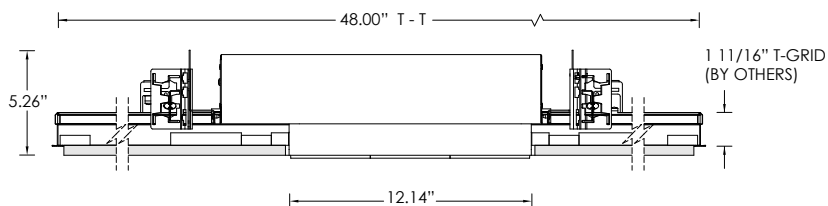
**PLEASE NOTE:** FIXTURE INSTALLATION MUST BE COORDINATED WITH CEILING PANEL INSTALLATION TO ENSURE FIXTURE ACCESSIBILITY CEILING SYSTEM AND 5/8" THICK INFILL PANEL (BY OTHERS)

**HOUSING TYPES**

**NC - NEW CONSTRUCTION HOUSING**

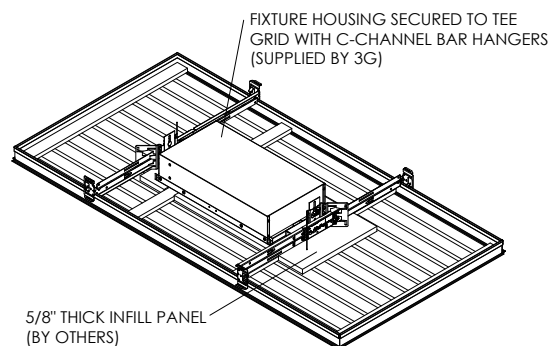


**LTG - LINEAR TEGULAR (CEILING SYSTEM BY OTHERS)**



COMPATIBLE CEILING SYSTEMS	
MANUFACTURER	COMPATIBLE PART NUMBER
ARMSTRONG	6733F51L4T9, 6733F51L4T5
9WOOD	2116-2

**SH - SHALLOW HOUSING**



**PLEASE NOTE:** FIXTURE INSTALLATION MUST BE COORDINATED WITH CEILING PANEL INSTALLATION TO ENSURE FIXTURE ACCESSIBILITY CEILING SYSTEM AND 5/8" THICK INFILL PANEL (BY OTHERS)

**HOUSING TYPES**

**SH - SHALLOW HOUSING**

